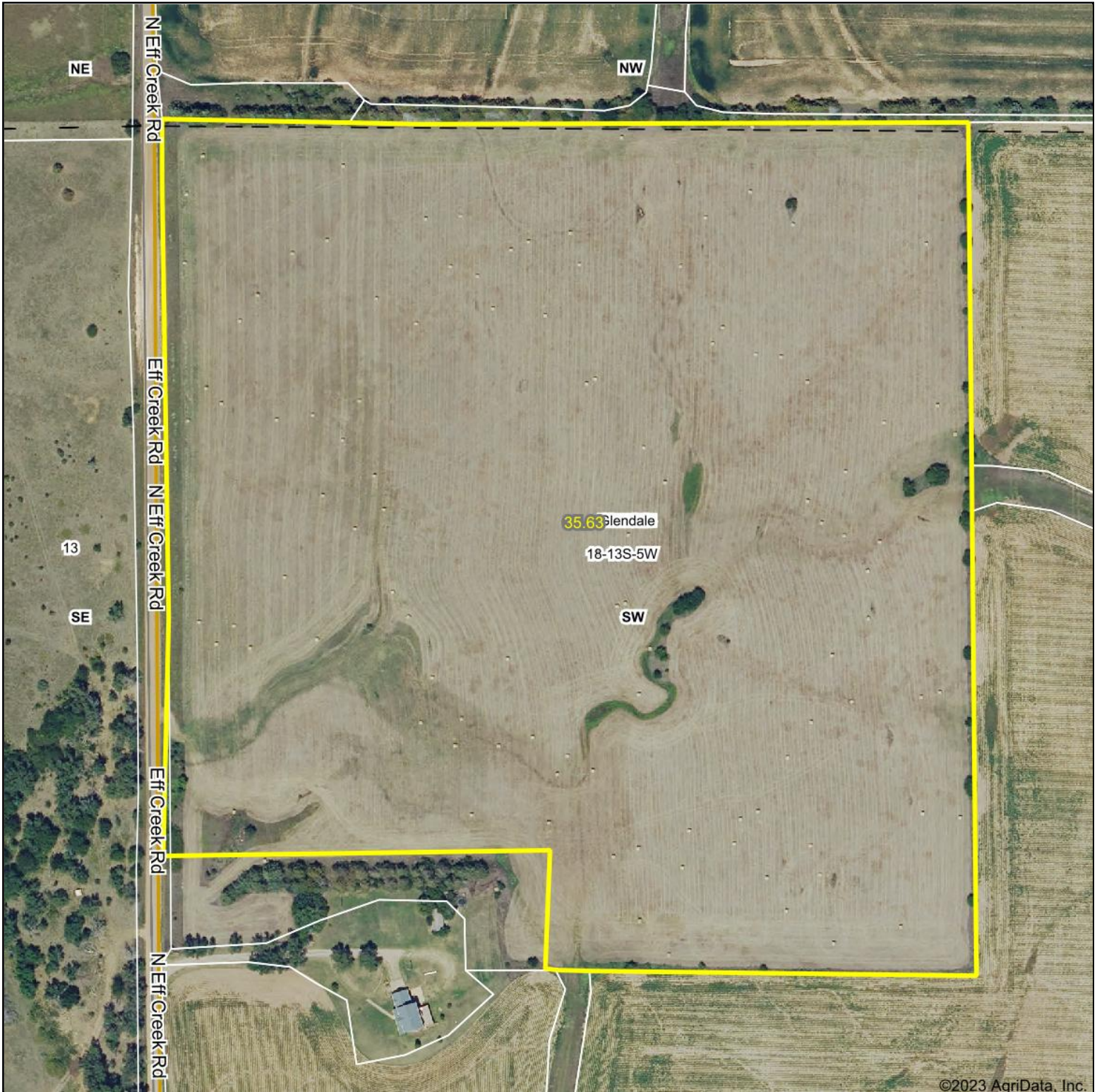


Aerial Map



©2023 AgriData, Inc.



COLDWELL BANKER
APW REALTORS®

Boundary Center: 38° 55' 12.35, -97° 55' 35.05

0ft 242ft 485ft

18-13S-5W
Saline County
Kansas



Maps Provided By:



© AgriData, Inc. 2023 www.AgriDataInc.com

12/21/2023

Field borders provided by Farm Service Agency as of 5/21/2008.