

# Development Opportunity

1010 Old Easley Highway Greenville, SC 29611



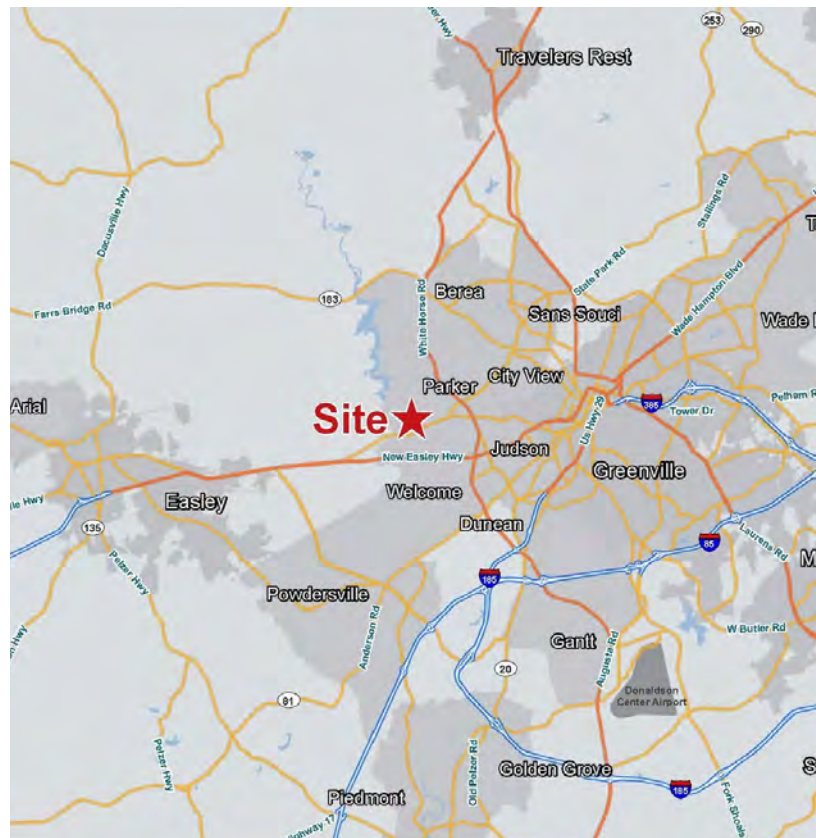
\$3,135,000



±3 Miles from Downtown Greenville

## Property Features

- ±57 Acres of land ideal for development
- Greenville Tax Map #0238010403200 (P/O)
- Asking Price: \$55K/acre
- +-1,100' of frontage on Old Easley Highway
- +-1,260' of frontage on Old Bent Bridge Road
- R-S zoning
- All utilities available
- Less than 3 miles from the heart of downtown Greenville, SC
- Less than 1 mile from the intersection of U.S. Highway 123 & U.S. Highway 25



✉ Rusty Hamrick  
+1 864 232 9040  
rhamrick@naearlefurman.com

No Warranty Or Representation, Express Or Implied, Is Made As To The Accuracy Of The Information Contained Herein, And The Same Is Submitted Subject To Errors, Omissions, Change Of Price, Rental Or Other Conditions, Prior Sale, Lease Or Financing, Or Withdrawal Without Notice, And Of Any Special Listing Conditions Imposed By Our Principals No Warranties Or Rep-resentations Are Made As To The Condition Of The Property Or Any Hazards Contained Therein Are Any To Be Implied.

📍 101 E Washington St  
Greenville, SC 29601  
naearlefurman.com



# Location

1010 Old Easley Highway Greenville, SC 29611





# Property Photos

1010 Old Easley Highway Greenville, SC 29611



✉ **Rusty Hamrick**  
+1 864 232 9040  
rhamrick@naiearlefurman.com

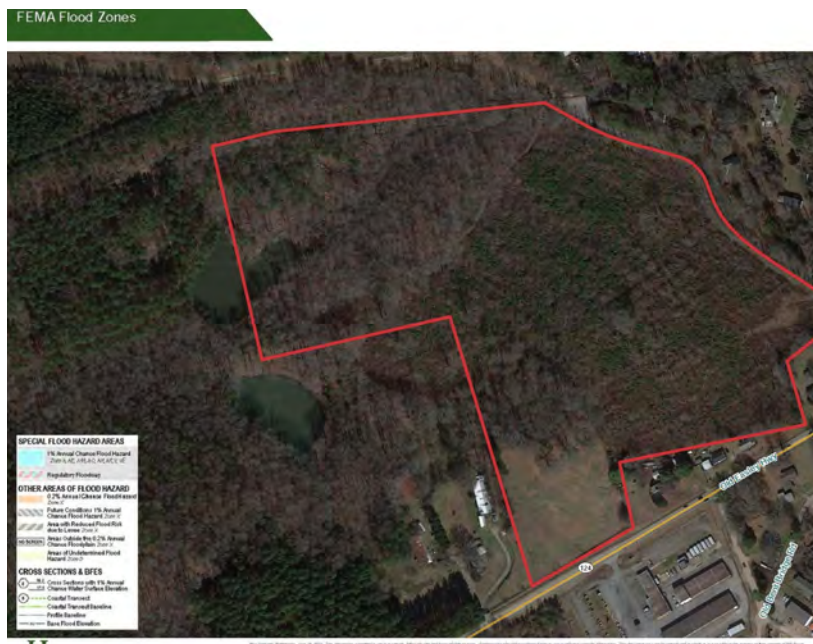
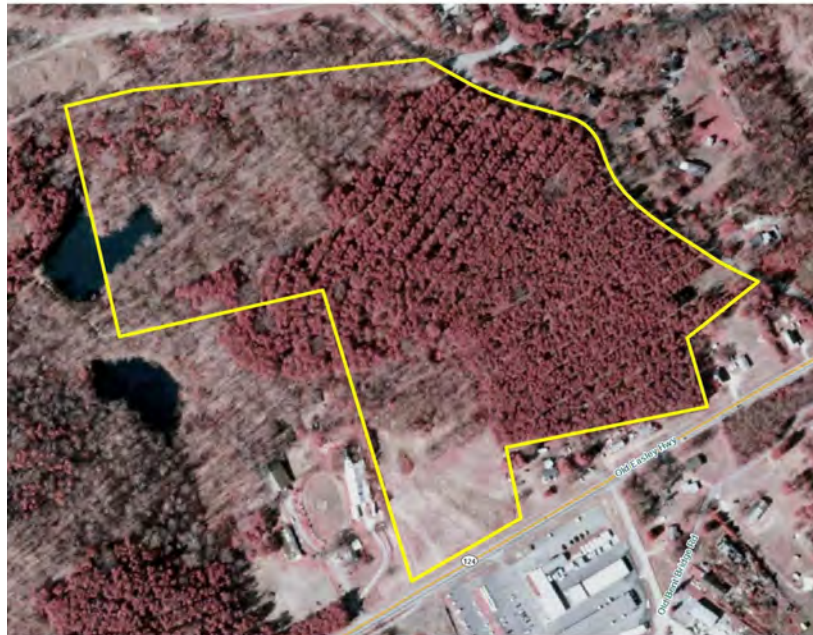
No Warranty Or Representation, Express Or Implied, Is Made As To The Accuracy Of The Information Contained Herein, And The Same Is Submitted Subject To Errors, Omissions, Change Of Price, Rental Or Other Conditions, Prior Sale, Lease Or Financing, Or Withdrawal Without Notice, And Of Any Special Listing Conditions Imposed By Our Principals No Warranties Or Representations Are Made As To The Condition Of The Property Or Any Hazards Contained Therein Are Any To Be Implied.

📍 **101 E Washington St**  
Greenville, SC 29601  
naiearlefurman.com



# Map Set

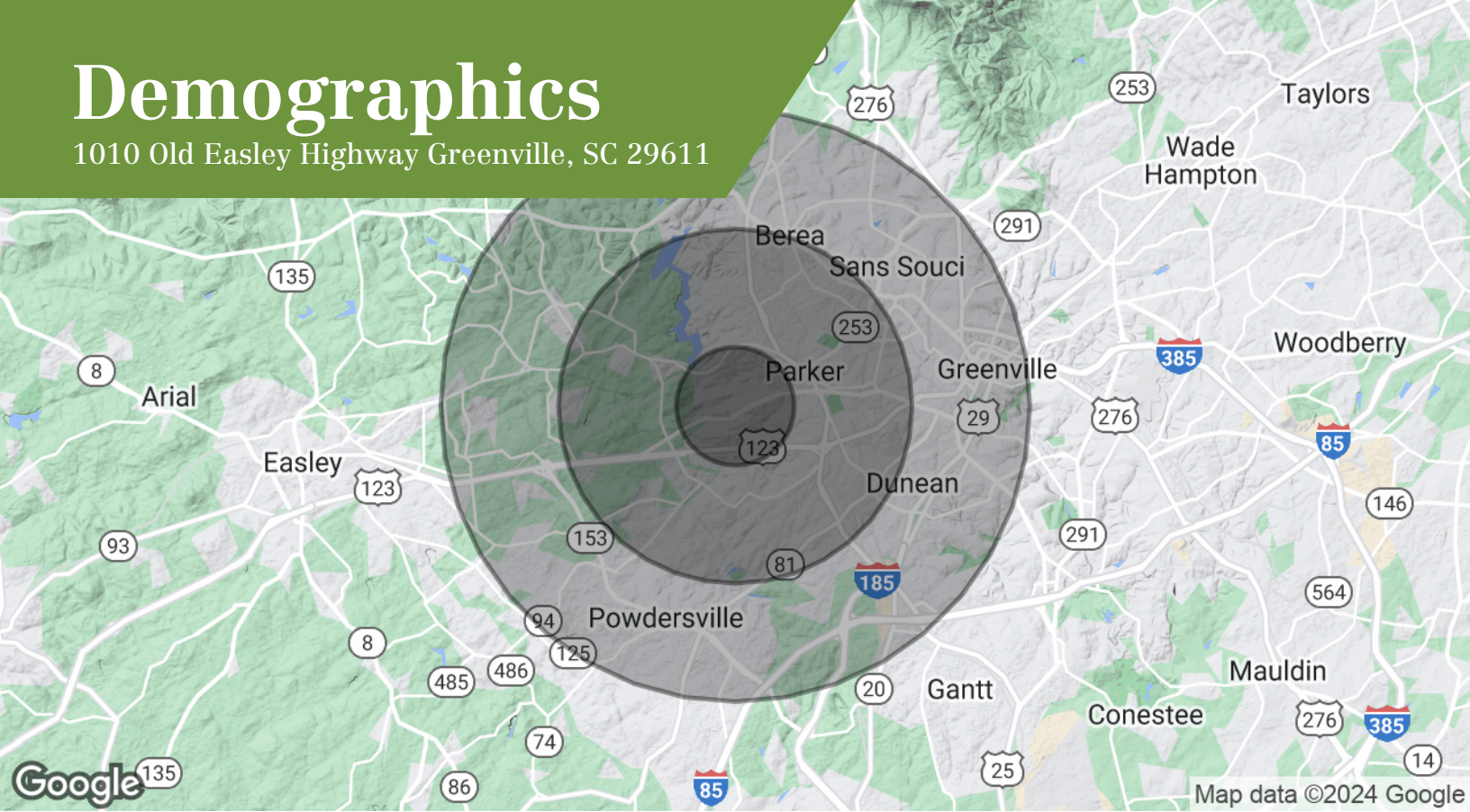
1010 Old Easley Highway Greenville, SC 29611





# Demographics

1010 Old Easley Highway Greenville, SC 29611



## Population

|                     | 1 Mile | 3 Miles | 5 Miles |
|---------------------|--------|---------|---------|
| Total population    | 1,594  | 36,172  | 100,839 |
| Median age          | 39.8   | 37.0    | 38.2    |
| Median age (male)   | 37.2   | 34.7    | 36.4    |
| Median age (Female) | 43.7   | 38.6    | 39.8    |

## Households & Income

|                     | 1 Mile    | 3 Miles   | 5 Miles   |
|---------------------|-----------|-----------|-----------|
| Total households    | 618       | 14,882    | 44,763    |
| # of persons per HH | 2.6       | 2.4       | 2.3       |
| Average HH income   | \$53,066  | \$50,256  | \$67,745  |
| Average house value | \$112,944 | \$111,997 | \$204,030 |

\* Demographic data derived from 2020 ACS - US Census