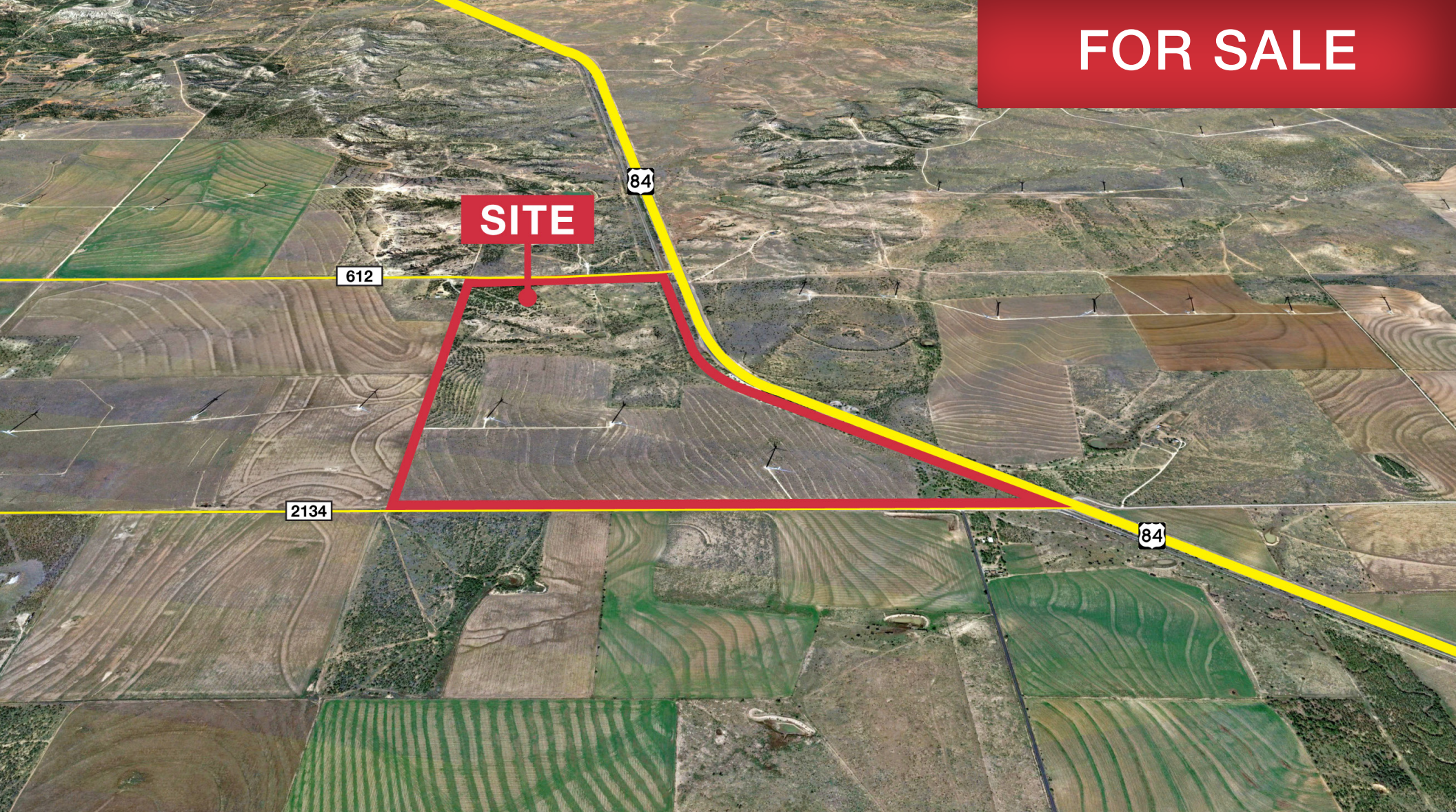


FOR SALE



SITE

612

84

2134

84

432 Acre Scurry County Ranch

US 84 & FM 612, Scurry County, Texas

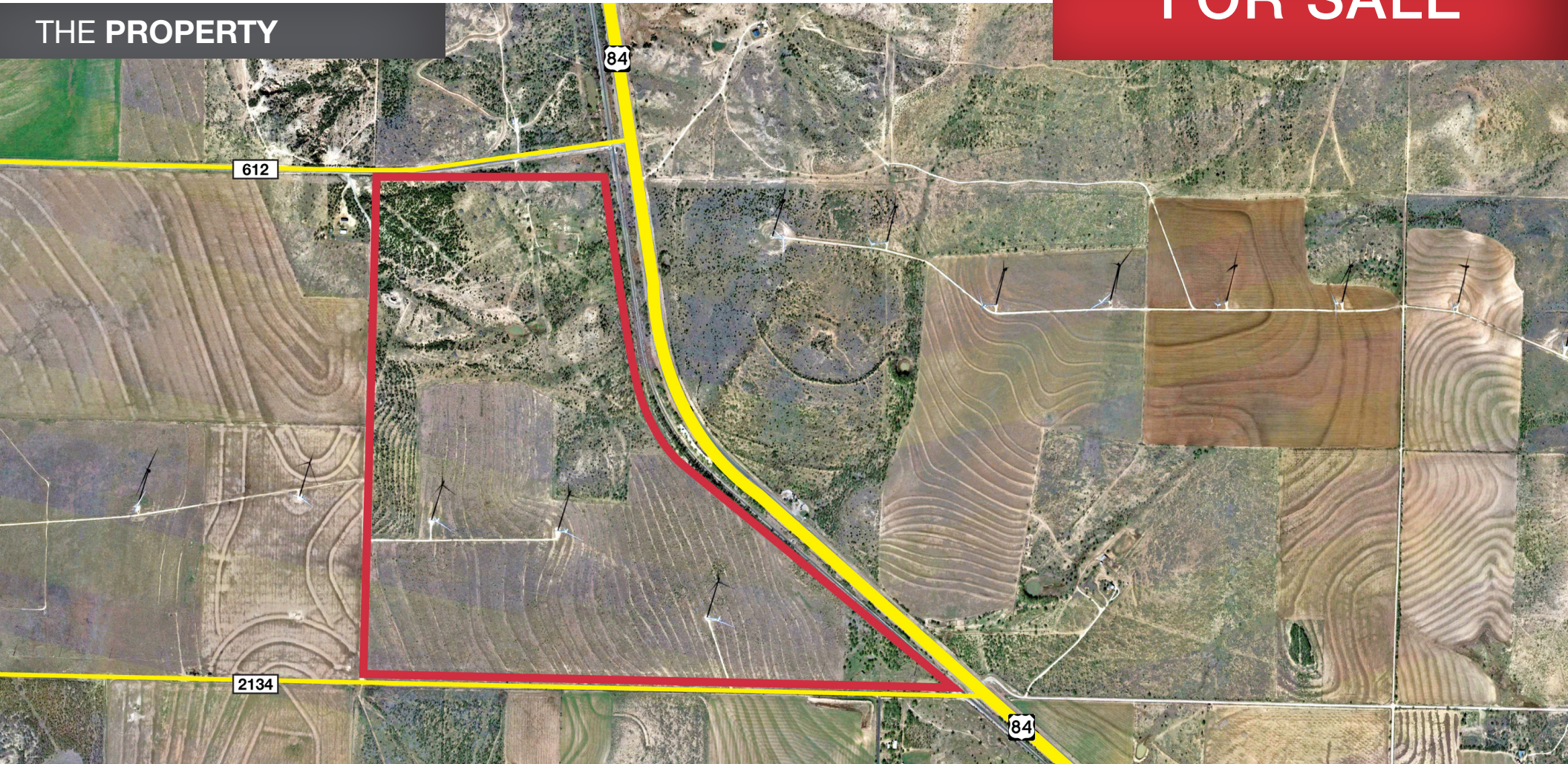
NAIWheelhouse

NO WARRANTY OR REPRESENTATION, EXPRESS OR IMPLIED, IS MADE AS TO THE ACCURACY OF THE INFORMATION CONTAINED HEREIN, AND THE SAME IS SUBMITTED SUBJECT TO ERRORS, OMISSIONS, CHANGE OF PRICE, RENTAL OR OTHER CONDITIONS, PRIOR SALE, LEASE OR FINANCING, OR WITHDRAWAL WITHOUT NOTICE, AND OF ANY SPECIAL LISTING CONDITIONS IMPOSED BY OUR PRINCIPALS NO WARRANTIES OR REPRESENTATIONS ARE MADE AS TO THE CONDITION OF THE PROPERTY OR ANY HAZARDS CONTAINED THEREIN ARE ANY TO BE IMPLIED.

Chase McGough
chase@naiwheelhouse.com
+1 325 207 6118
naiwheelhouse.com

FOR SALE

THE PROPERTY



Property Description

This 432-acre ranch is located directly off US HWY 84 & FM 612 in Scurry County. The property has 2 water wells, 2 stock tanks and 245 acres of improved native grass. The sale does not include mineral or wind rights.

The ranch is located conveniently in between Snyder, TX and Post, TX.

Property Summary

SIZE (AC)	432 Acres
SIZE (SF)	18,817,920 SF
PRICE	\$518,000.00



Chase McGough
chase@naiwheelhouse.com
+1 325 207 6118
naiwheelhouse.com

THE PROPERTY



FOR SALE



NAIWheelhouse

Chase McGough
chase@naiwheelhouse.com
+1 325 207 6118
naiwheelhouse.com

THE LOCATION

FOR SALE

