

For Sale

±60 Acres

Recreational/ Timberland Tract

Site →



Perry Lane

Winnsboro, South Carolina



Nelson Weston, III
803.678.7346
nweston@naicolumbia.com



Tombo Milliken
803.206.8384
tombo.milliken@naicolumbia.com



Tom Milliken
803.331.6999
tmilliken@naicolumbia.com

THE INFORMATION CONTAINED HEREIN HAS BEEN GIVEN TO US BY THE OWNER OF THE PROPERTY OR OTHER SOURCES WE DEEM RELIABLE. WE HAVE NO REASON TO DOUBT ITS ACCURACY, BUT WE DO NOT GUARANTEE IT. ALL INFORMATION SHOULD BE VERIFIED PRIOR TO PURCHASE OR LEASE.

Perry Lane

Winnsboro, South Carolina

For Sale

±60 Acres

Recreational/ Timberland Tract

Property Features

- Approximately 60 +/- Acres for Sale near Blythewood
- Less than 40 minutes from downtown Columbia
- Mature mixed timber (natural regeneration) throughout allows for an immediate source of income if thinned or harvested.
- High and Dry tract that is great for a large homesite or recreation
- Approximately 710' +/- of frontage on Perry Lane (paved)
- Willing to Subdivide depending on size and shape
- Flat throughout with some gentle topography in the rear as it falls to Smith Branch

Sales Price: \$450,000



For Sale

±60 Acres

Recreational/ Timberland Tract

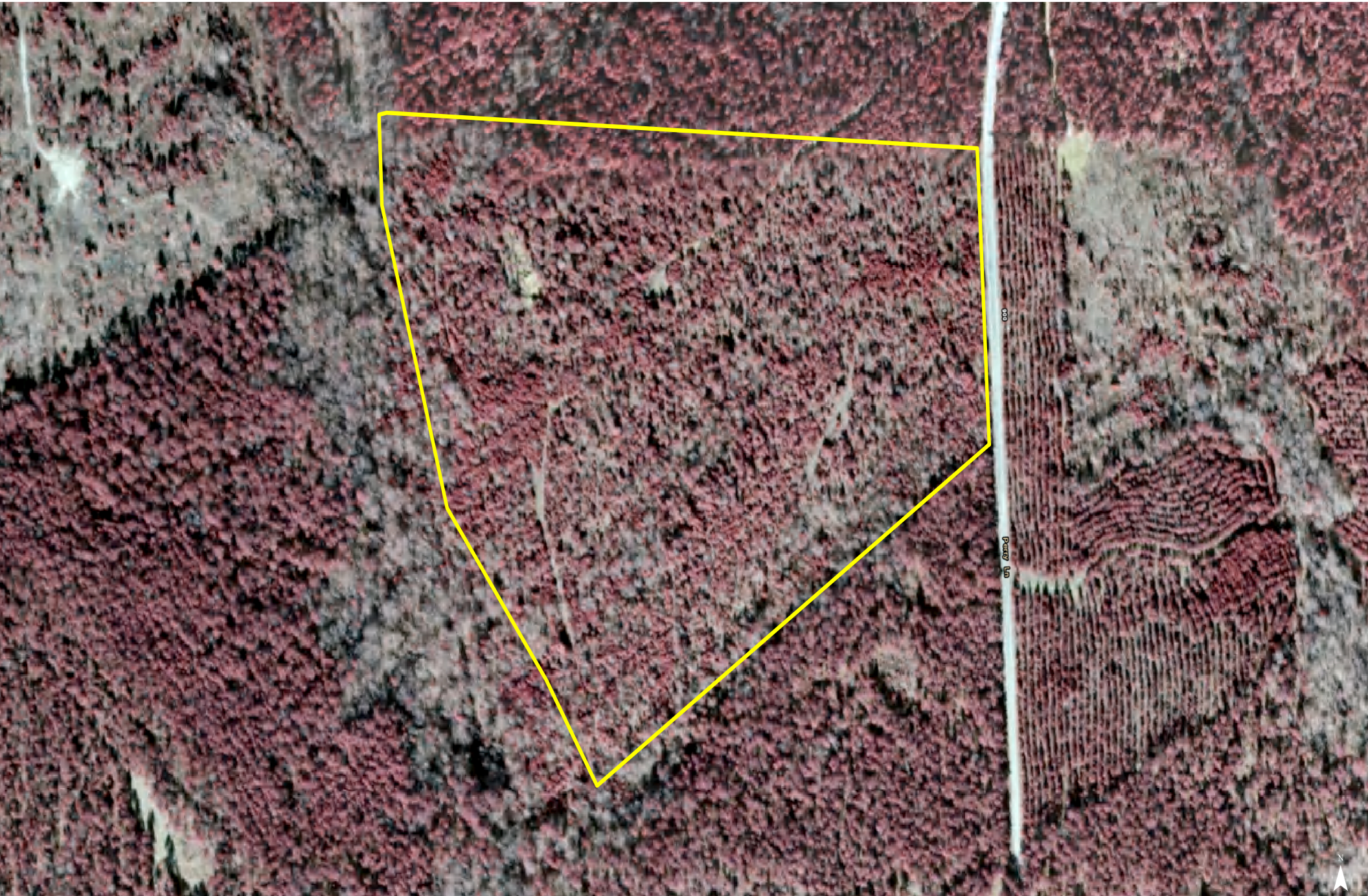




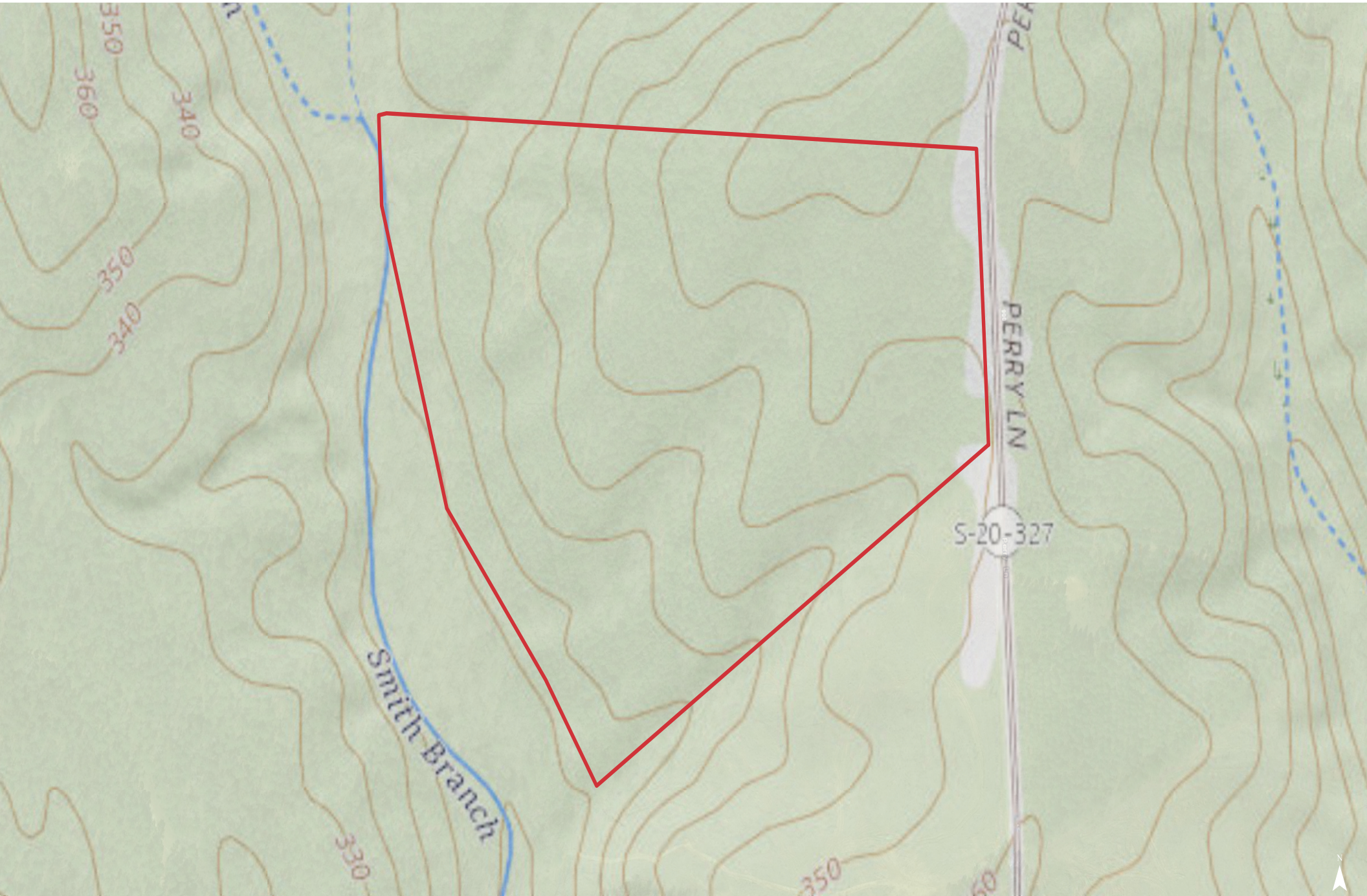
Map Updated: Friday, July 28, 2023. This information submitted is not guaranteed. Although obtained from reliable sources, all information should be confirmed prior to use or reliance upon the information. This document may not be reproduced in whole or in part without the express written consent of NAI Columbia.



Map Updated: Friday, July 28, 2023. This information submitted is not guaranteed. Although obtained from reliable sources, all information should be confirmed prior to use or reliance upon the information. This document may not be reproduced in whole or in part without the express written consent of NAI Columbia.



Map Updated: Friday, July 28, 2023. This information submitted is not guaranteed. Although obtained from reliable sources, all information should be confirmed prior to use or reliance upon the information. This document may not be reproduced in whole or in part without the express written consent of NAI Columbia.



Map Updated: Friday, July 28, 2023. This information submitted is not guaranteed. Although obtained from reliable sources, all information should be confirmed prior to use or reliance upon the information. This document may not be reproduced in whole or in part without the express written consent of NAI Columbia.

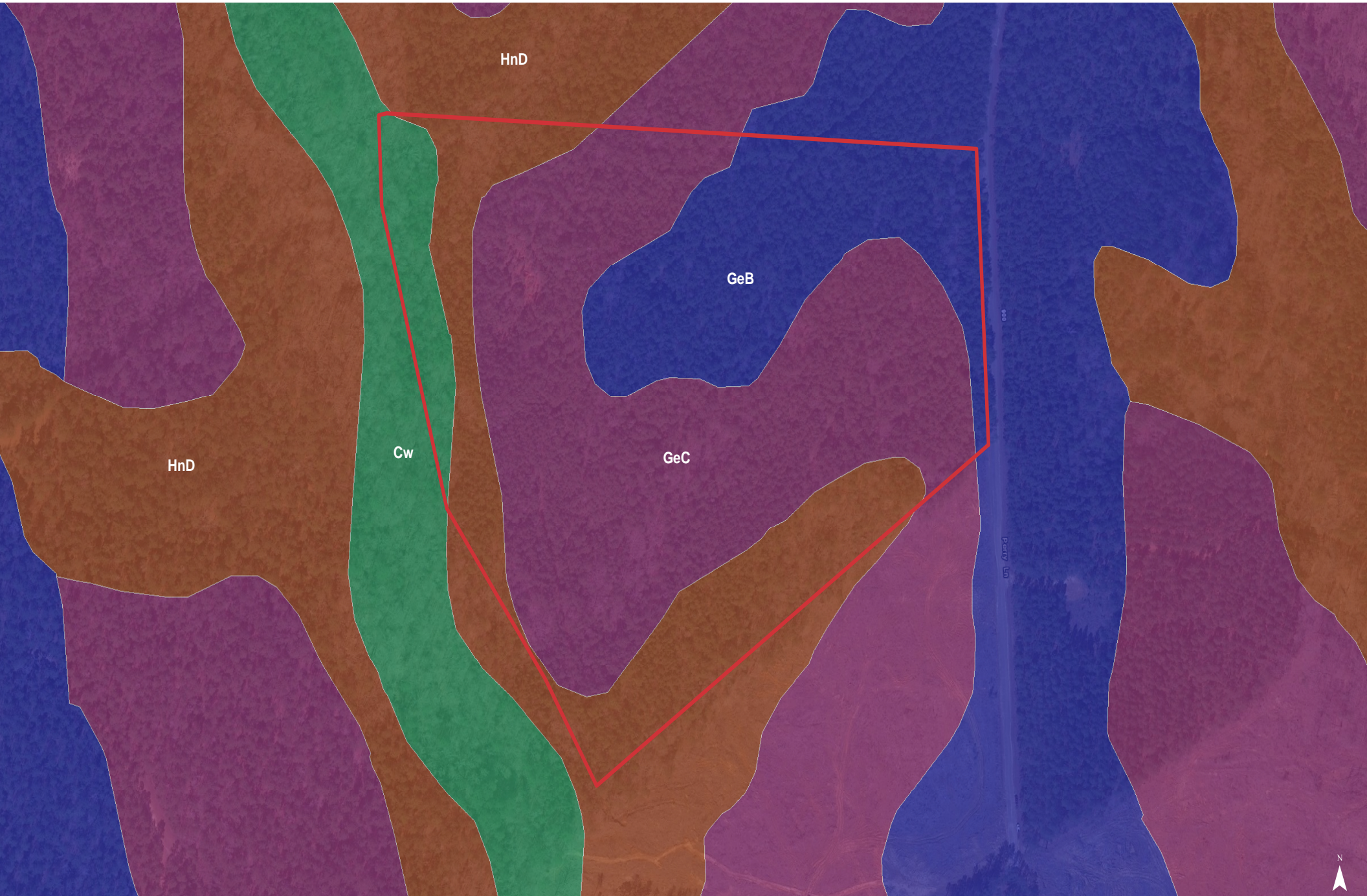


Map Updated: Friday, July 28, 2023. This information submitted is not guaranteed. Although obtained from reliable sources, all information should be confirmed prior to use or reliance upon the information. This document may not be reproduced in whole or in part without the express written consent of NAI Columbia.

National Wetlands Inventory

- Estuarine and Marine Deepwater
- Estuarine and Marine Wetland
- Freshwater Emergent Wetland
- Freshwater Forested/Shrub Wetland
- Freshwater Pond
- Lake
- Riverine

Map Updated: Friday, July 28, 2023. This information submitted is not guaranteed. Although obtained from reliable sources, all information should be confirmed prior to use or reliance upon the information. This document may not be reproduced in whole or in part without the express written consent of NAI Columbia.



Map Updated: Friday, July 28, 2023. This information submitted is not guaranteed. Although obtained from reliable sources, all information should be confirmed prior to use or reliance upon the information. This document may not be reproduced in whole or in part without the express written consent of NAI Columbia.

Map Unit Description (Brief, Generated)

Fairfield County, South Carolina

[Minor map unit components are excluded from this report]

Map unit: Cw - Chewacla loam, 0 to 2 percent slopes, frequently flooded

Component: Chewacla, frequently flooded (80%)

The Chewacla, frequently flooded component makes up 80 percent of the map unit. Slopes are 0 to 2 percent. This component is on flood plains on southern piedmonts. The parent material consists of alluvium. Depth to a root restrictive layer is greater than 60 inches. The natural drainage class is somewhat poorly drained. Water movement in the most restrictive layer is moderately high. Available water to a depth of 60 inches is high. Shrink-swell potential is moderate. This soil is frequently flooded. It is not ponded. A seasonal zone of water saturation is at 10 inches during January, February, March, December. Organic matter content in the surface horizon is about 2 percent. Nonirrigated land capability classification is 5w. This soil does not meet hydric criteria.

Map unit: GeB - Georgeville loam, 2 to 6 percent slopes

Component: Georgeville (80%)

The Georgeville component makes up 80 percent of the map unit. Slopes are 2 to 6 percent. This component is on hillslopes on uplands. The parent material consists of clayey residuum weathered from argillite. Depth to a root restrictive layer is greater than 60 inches. The natural drainage class is well drained. Water movement in the most restrictive layer is moderately high. Available water to a depth of 60 inches is high. Shrink-swell potential is low. This soil is not flooded. It is not ponded. There is no zone of water saturation within a depth of 72 inches. Organic matter content in the surface horizon is about 1 percent. Nonirrigated land capability classification is 2e. This soil does not meet hydric criteria.

Map unit: GeC - Georgeville loam, 6 to 10 percent slopes

Component: Georgeville (80%)

The Georgeville component makes up 80 percent of the map unit. Slopes are 6 to 10 percent. This component is on hillslopes on uplands. The parent material consists of clayey residuum weathered from argillite. Depth to a root restrictive layer is greater than 60 inches. The natural drainage class is well drained. Water movement in the most restrictive layer is moderately high. Available water to a depth of 60 inches is high. Shrink-swell potential is low. This soil is not flooded. It is not ponded. There is no zone of water saturation within a depth of 72 inches. Organic matter content in the surface horizon is about 1 percent. Nonirrigated land capability classification is 3e. This soil does not meet hydric criteria.

Map unit: HnD - Herndon loam, 6 to 15 percent slopes

Component: Herndon (80%)

The Herndon component makes up 80 percent of the map unit. Slopes are 6 to 15 percent. This component is on hillslopes on uplands. The parent material consists of clayey residuum weathered from argillite. Depth to a root restrictive layer is greater than 60 inches. The natural drainage class is well drained. Water movement in the most restrictive layer is moderately high. Available water to a depth of 60 inches is high. Shrink-swell potential is low. This soil is not flooded. It is not ponded. There is no zone of water saturation within a depth of 72 inches. Organic matter content in the surface horizon is about 1 percent. Nonirrigated land capability classification is 4e. This soil does not meet hydric criteria.