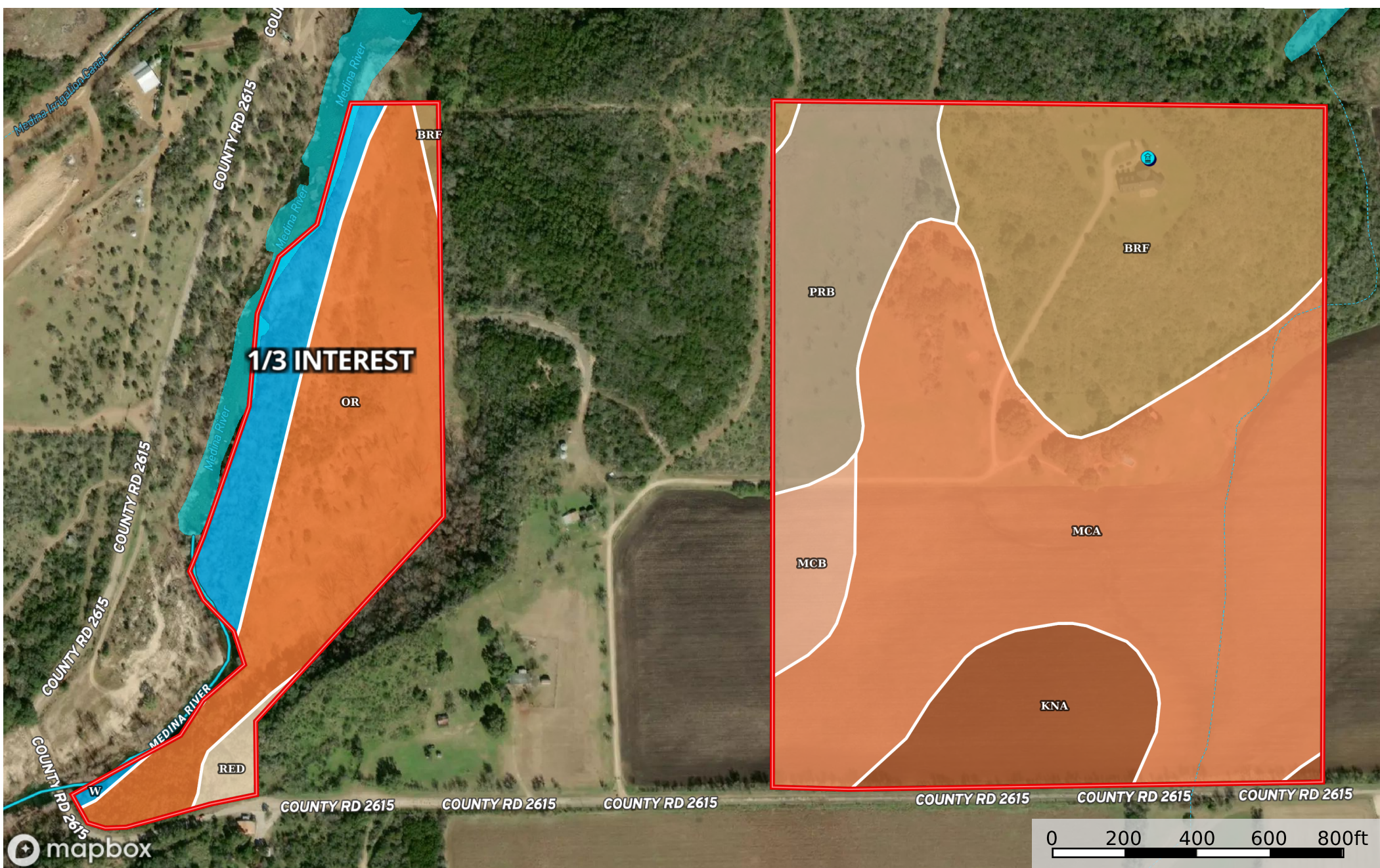


Mangold ranch

Texas, AC +/-



- Boundary
- Stream, Intermittent
- River/Creek
- Water Body
- Crude Oil
- Natural Gas
- Other
- Water Wells

|  All Polygons 83.85 ac

SOIL CODE	SOIL DESCRIPTION	ACRES	%	CPI	NCCPI	CAP
McA	Montell clay, 0 to 1 percent slopes	31.77	37.88	0	21	4s
BRF	Kerrville-Rock outcrop association, 10 to 30 percent slopes	17.27	20.59	0	14	7s
Or	Orif soils, 0 to 3 percent slopes, frequently flooded	13.51	16.11	0	17	5w
PrB	Pratley clay, 0 to 3 percent slopes	7.88	9.4	0	38	3e
KnA	Knippa clay, 0 to 1 percent slopes	6.14	7.32	0	48	2s
W	Water	4.26	5.08	0	-	8
McB	Montell clay, 1 to 3 percent slopes	2.3	2.74	0	24	4e
RED	Real association, undulating	0.72	0.86	0	10	6s
TOTALS		83.85(*)	100%	-	21.41	4.76

(*) Total acres may differ in the second decimal compared to the sum of each acreage soil. This is due to a round error because we only show the acres of each soil with two decimal.

|  Boundary 18.76 ac

SOIL CODE	SOIL DESCRIPTION	ACRES	%	CPI	NCCPI	CAP
Or	Orif soils, 0 to 3 percent slopes, frequently flooded	13.51	72.01	0	17	5w
W	Water	4.26	22.71	0	-	8
RED	Real association, undulating	0.72	3.84	0	10	6s
BRF	Kerrville-Rock outcrop association, 10 to 30 percent slopes	0.27	1.44	0	14	7s
TOTALS		18.76(*)	100%	-	12.83	5.75

(*) Total acres may differ in the second decimal compared to the sum of each acreage soil. This is due to a round error because we only show the acres of each soil with two decimal.

|  Boundary 65.09 ac

SOIL CODE	SOIL DESCRIPTION	ACRES	%	CPI	NCCPI	CAP
McA	Montell clay, 0 to 1 percent slopes	31.77	48.8	0	21	4s
BRF	Kerrville-Rock outcrop association, 10 to 30 percent slopes	17	26.11	0	14	7s
PrB	Pratley clay, 0 to 3 percent slopes	7.88	12.1	0	38	3e
KnA	Knippa clay, 0 to 1 percent slopes	6.14	9.43	0	48	2s
McB	Montell clay, 1 to 3 percent slopes	2.3	3.53	0	24	4e
TOTALS		65.09(*)	100%	-	23.88	4.47









(*) Total acres may differ in the second decimal compared to the sum of each acreage soil. This is due to a round error because we only show the acres of each soil with two decimal.

Capability Legend

Increased Limitations and Hazards

Decreased Adaptability and Freedom of Choice Users

Land, Capability

								
	1	2	3	4	5	6	7	8
'Wild Life'	•	•	•	•	•	•	•	•
Forestry	•	•	•	•	•	•	•	
Limited	•	•	•	•	•	•	•	
Moderate	•	•	•	•	•	•		
Intense	•	•	•	•	•			
Limited	•	•	•	•				
Moderate	•	•	•					
Intense	•	•						
Very Intense	•							

Grazing Cultivation

(c) climatic limitations (e) susceptibility to erosion

(s) soil limitations within the rooting zone (w) excess of water