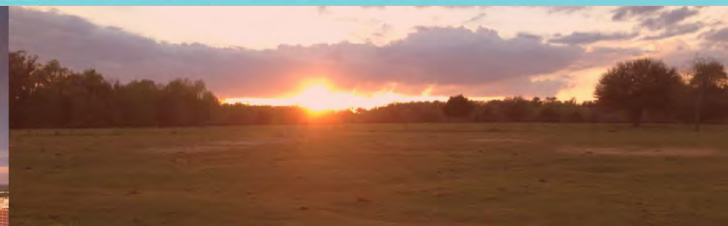
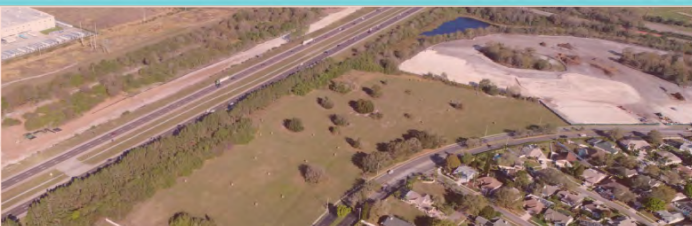


We know this land.



Eshenbaugh

LAND COMPANY



The Dirt Dog

304 S. WILLOW AVENUE

TAMPA, FL 33606

813.287.8787

www.thedirtdog.com

Aerial Looking South



Property Description

PROPERTY DESCRIPTION

These parcels offer a prime opportunity for an investor or business seeking a strategic location nestled right off I-75 & SR 50 in Brooksville, FL. These parcels offer easy access and visibility from the interstate, making them a coveted choice for those aiming to capture the attention of a high-traffic audience. There are 17 parcels and seller is looking to sell all together or divided as shown on the aerials and broken down below.

LOCATION DESCRIPTION

This property is located at the south west corner of I-75 & Cortez Blvd along Nature Coast Blvd in Brooksville, FL.

MUNICIPALITY

Hernando County

PROPERTY SIZE

18.44 Acres - Total

Lots 1-8: 8.21 Acres

Lots 18-23: 5.84 Acres

Lots 25-27: 4.39 Acres

ZONING

Lots 1-8: PDP (HC) with C4 Uses

Lots 18-21: PDP (L1)

Lots 22-23 & 25-27: PDP (GC)

PRICE

Lots 1-8: \$1,250,000

Lots 18-23: \$750,000

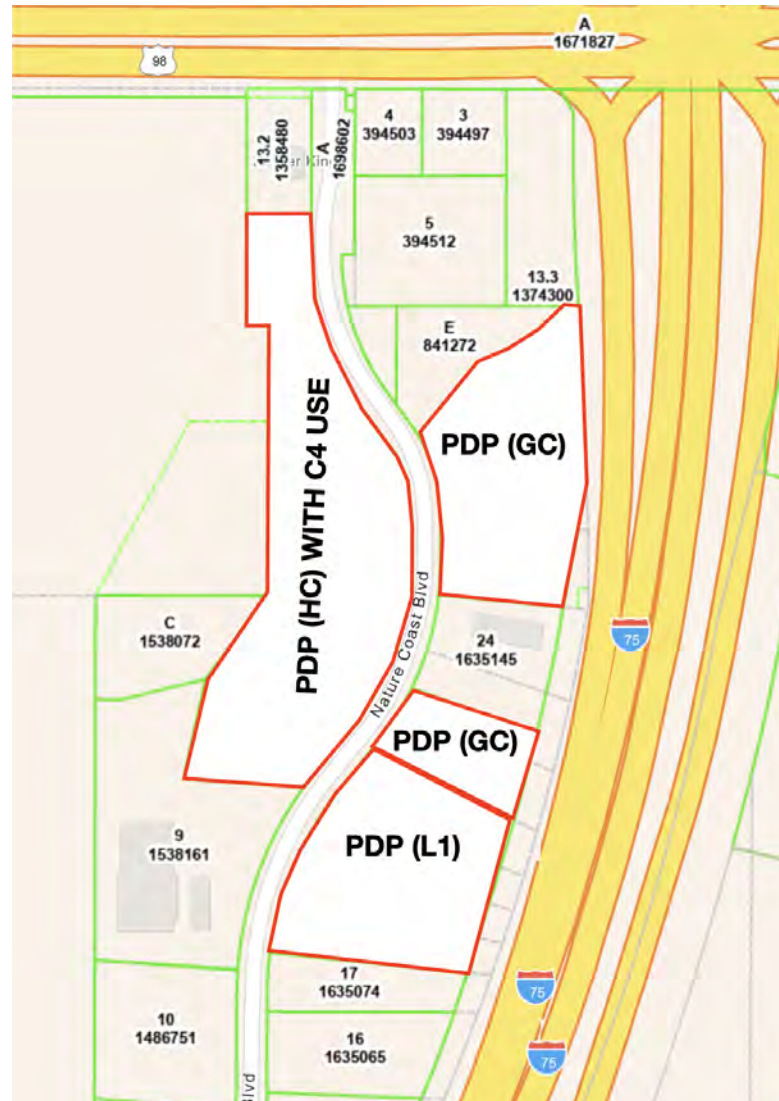
Lots 25-27: \$650,000

BROKER CONTACT INFO

Chris Bowers, CCIM
Senior Broker Associate
813.287.8787 x8
chris@thedirtdog.com

Bill Eshenbaugh, ALC, CCIM
President, Lic. Real Estate Broker
813.287.8787 x1
Bill@TheDirtDog.com

Zoning Map



LOT BREAKDOWN

Lot #	SF PER PA	Acreage Per PA	Zoning	Parcel Number
1	39,474	0.91	PDP-HC with C4 Uses	R06 123 21 0215 0000 0010
Tract B - ROW	4,356	0.10	PDP-HC with C4 Uses	R06 123 21 0215 0000 000B
2	28,446	0.65	PDP-HC with C4 Uses	R06 123 21 0215 0000 0020
3	40,810	0.94	PDP-HC with C4 Uses	R06 123 21 0215 0000 0030
4	43,646	1.00	PDP-HC with C4 Uses	R06 123 21 0215 0000 0040
5	44,442	1.02	PDP-HC with C4 Uses	R06 123 21 0215 0000 0050
6	50,453	1.16	PDP-HC with C4 Uses	R06 123 21 0215 0000 0060
7	54,215	1.24	PDP-HC with C4 Uses	R06 123 21 0215 0000 0070
8	51,673	1.19	PDP-HC with C4 Uses	R06 123 21 0215 0000 0080
18	49,077	1.13	PDP-L1	R06 123 21 0216 0000 0180
19	48,872	1.12	PDP-L1	R06 123 21 0216 0000 0190
20	48,588	1.12	PDP-L1	R06 123 21 0216 0000 0200
21	47,140	1.08	PDP-L1	R06 123 21 0216 0000 0210
22	45,122	1.04	PDP-GC	R06 123 21 0216 0000 0220
23	15,751	0.36	PDP-GC	R06 123 21 0216 0000 0230
25	49,274	1.13	PDP-GC	R06 123 21 0216 0000 0250
26	56,344	1.29	PDP-GC	R06 123 21 0216 0000 0260
27	85,636	1.97	PDP-GC	R06 123 21 0216 0000 0270
	803,319	18.44		

Aerials Looking Northeast



Aerial Looking South



Aerial Looking North



Demographics Map & Report

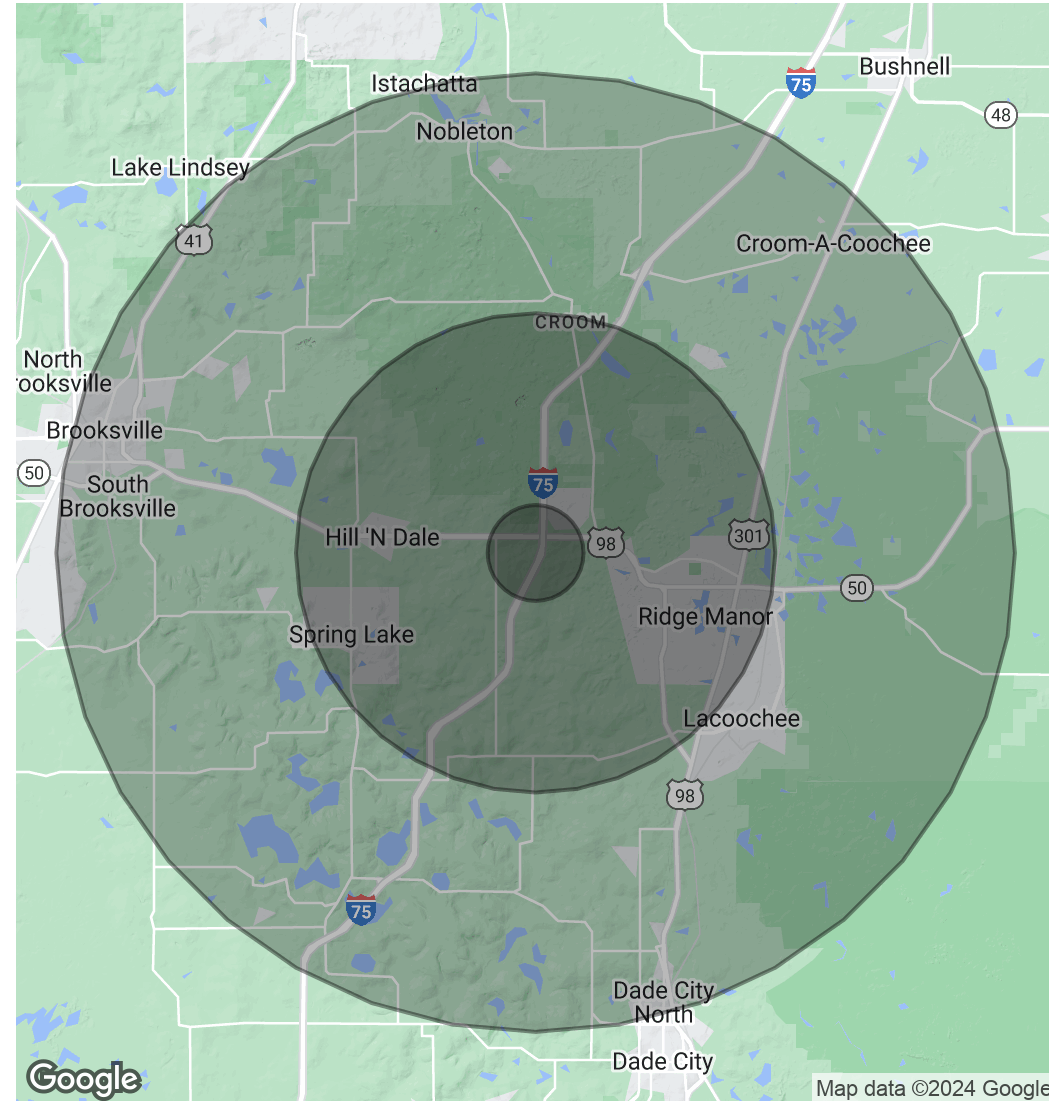
POPULATION

	1 MILE	5 MILES	10 MILES
Total Population	394	13,328	47,428
Average Age	46.3	47.5	46.0
Average Age (Male)	48.6	46.1	44.4
Average Age (Female)	46.3	49.4	46.5

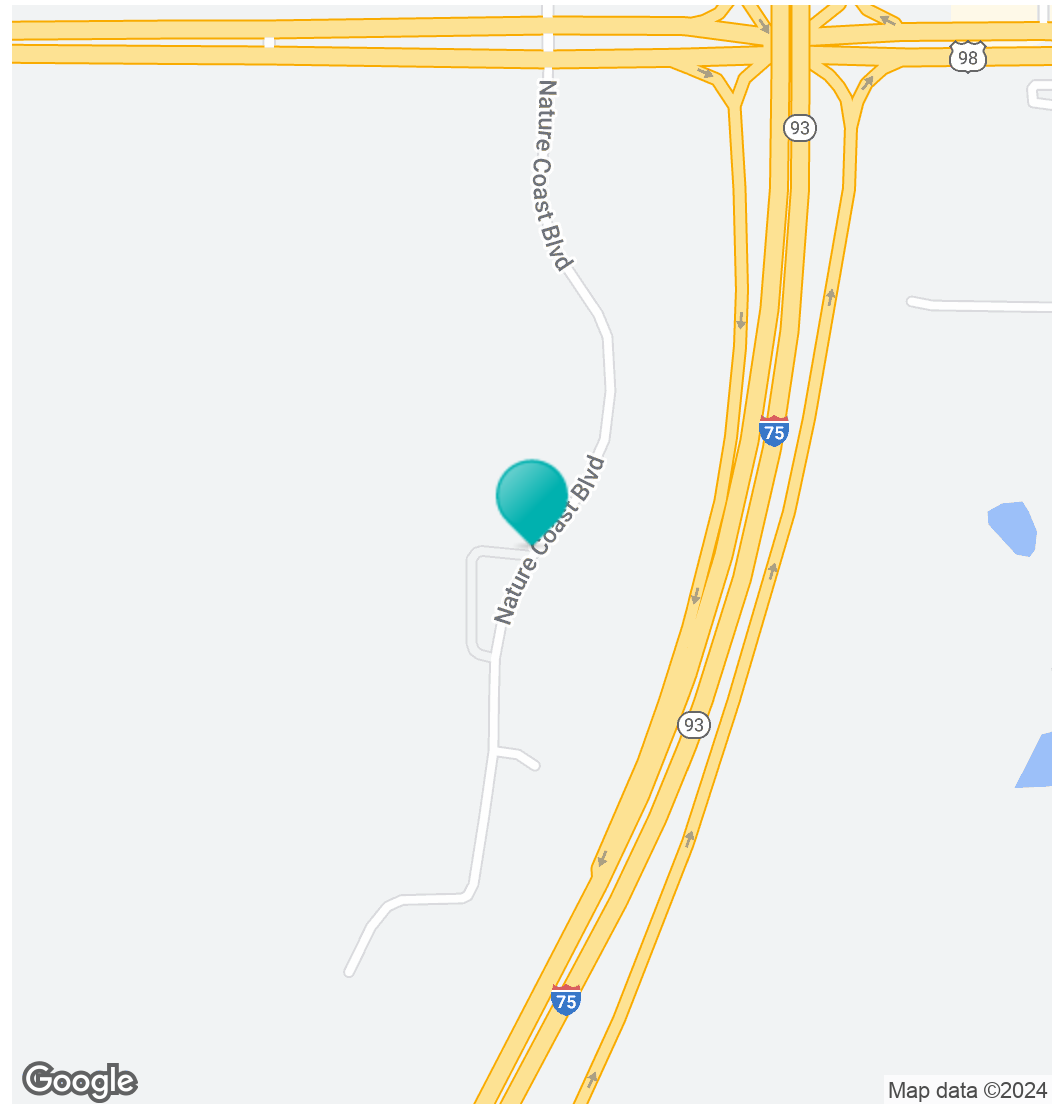
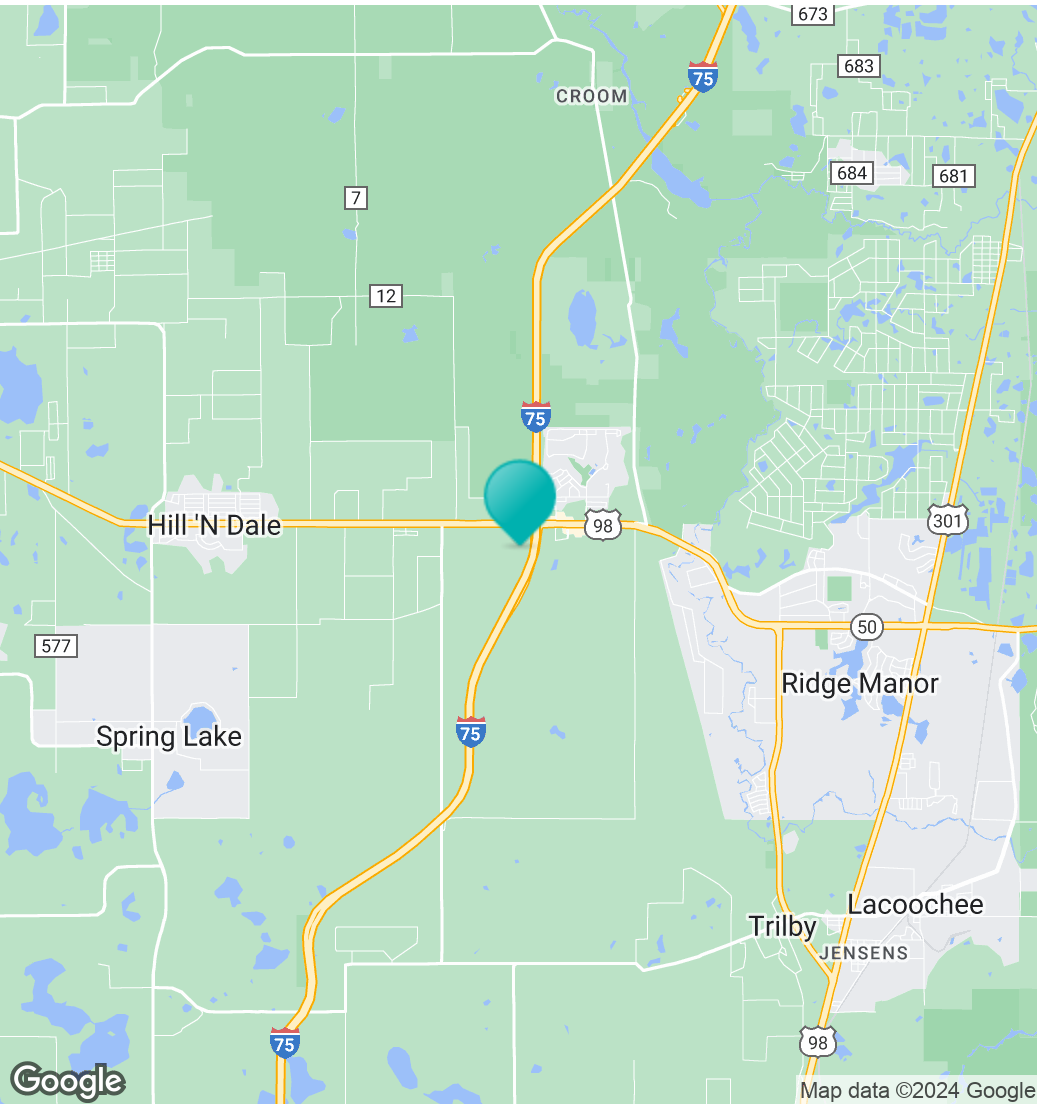
HOUSEHOLDS & INCOME

	1 MILE	5 MILES	10 MILES
Total Households	191	6,050	20,709
# of Persons per HH	2.1	2.2	2.3
Average HH Income	\$50,412	\$57,650	\$54,038
Average House Value	\$136,842	\$151,926	\$148,255

* Demographic data derived from 2020 ACS - US Census



Location Maps



Confidentiality & Disclaimer

All materials and information received or derived from Eshenbaugh Land Company, LLC its directors, officers, agents, advisors, affiliates and/or any third party sources are provided without representation or warranty as to completeness, veracity, or accuracy, condition of the property, compliance or lack of compliance with applicable governmental requirements, developability or suitability, financial performance of the property, projected financial performance of the property for any party's intended use or any and all other matters.

Neither Eshenbaugh Land Company, LLC its directors, officers, agents, advisors, or affiliates makes any representation or warranty, express or implied, as to accuracy or completeness of the any materials or information provided, derived, or received. Materials and information from any source, whether written or verbal, that may be furnished for review are not a substitute for a party's active conduct of its own due diligence to determine these and other matters of significance to such party. Eshenbaugh Land Company, LLC will not investigate or verify any such matters or conduct due diligence for a party unless otherwise agreed in writing.

EACH PARTY SHALL CONDUCT ITS OWN INDEPENDENT INVESTIGATION AND DUE DILIGENCE.

Any party contemplating or under contract or in escrow for a transaction is urged to verify all information and to conduct their own inspections and investigations including through appropriate third party independent professionals selected by such party. All financial data should be verified by the party including by obtaining and reading applicable documents and reports and consulting appropriate independent professionals. Eshenbaugh Land Company, LLC makes no warranties and/or representations

regarding the veracity, completeness, or relevance of any financial data or assumptions. Eshenbaugh Land Company, LLC does not serve as a financial advisor to any party regarding any proposed transaction. All data and assumptions regarding financial performance, including that used for financial modeling purposes, may differ from actual data or performance. Any estimates of market rents and/or projected rents that may be provided to a party do not necessarily mean that rents can be established at or increased to that level. Parties must evaluate any applicable contractual and governmental limitations as well as market conditions, vacancy factors and other issues in order to determine rents from or for the property.

Legal questions should be discussed by the party with an attorney. Tax questions should be discussed by the party with a certified public accountant or tax attorney. Title questions should be discussed by the party with a title officer or attorney. Questions regarding the condition of the property and whether the property complies with applicable governmental requirements should be discussed by the party with appropriate engineers, architects, contractors, other consultants and governmental agencies. All properties and services are marketed by Eshenbaugh Land Company, LLC in compliance with all applicable fair housing and equal opportunity laws.

Eshenbaugh Land Company is a licensed real estate brokerage firm in Florida and William A. Eshenbaugh is the broker of record.