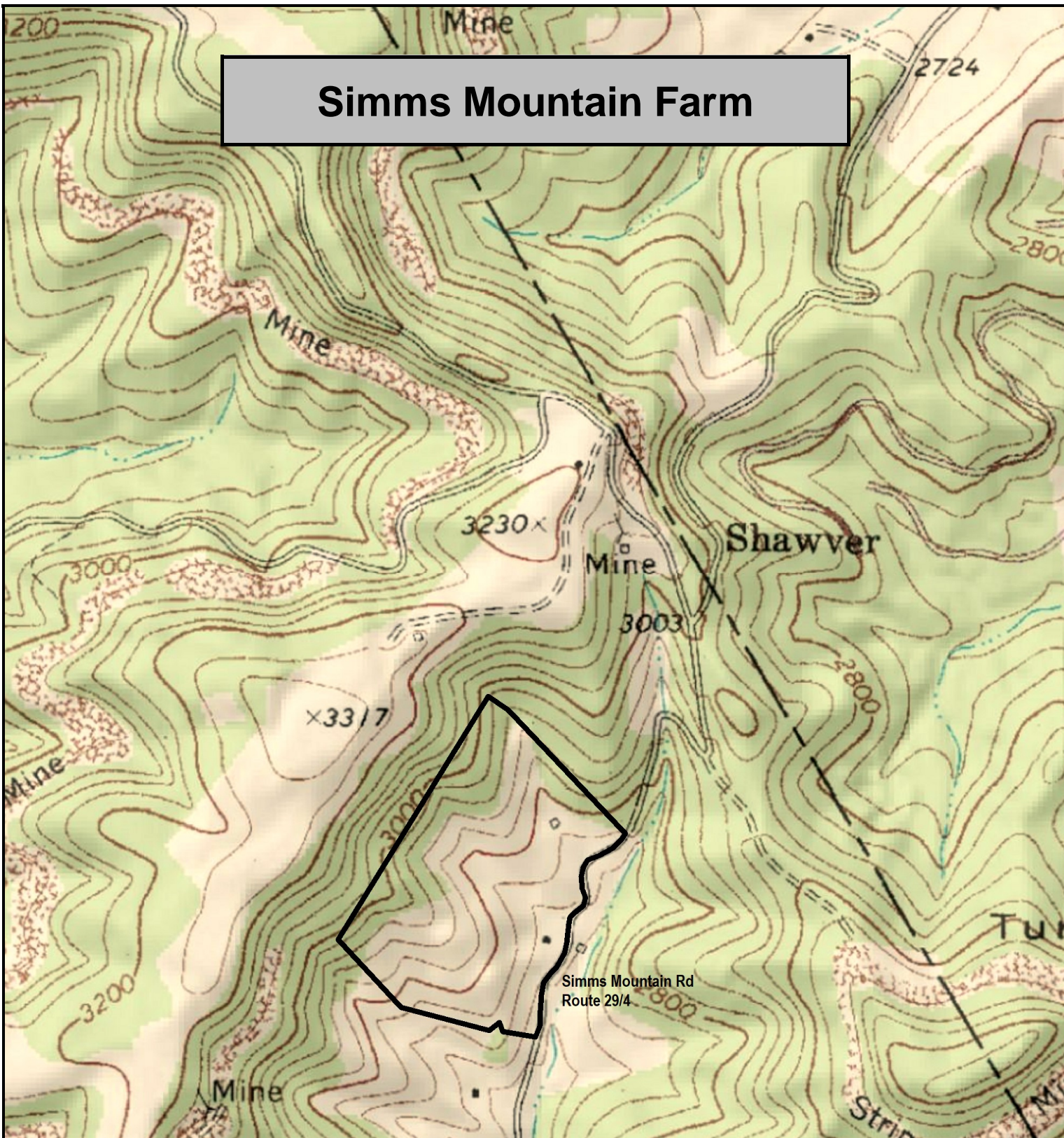


Simms Mountain Farm



Simms Mountain Farm, Fayette County, WV
TOPOGRAPHIC MAP

Elevation Range: 2655' - 2991' +/-

Google Coordinates: LAT 37.881642 (N), LON -80.768236 (W)

This map is for general location purposes only. Consult a licensed land surveyor for actual boundary location and acreage.
PROPERTY DEPICTION IS DERIVED FROM DEED DESCRIPTION.

FOR TOPO MAP

SCALE 1:9600

1 INCH = 800 FT.

