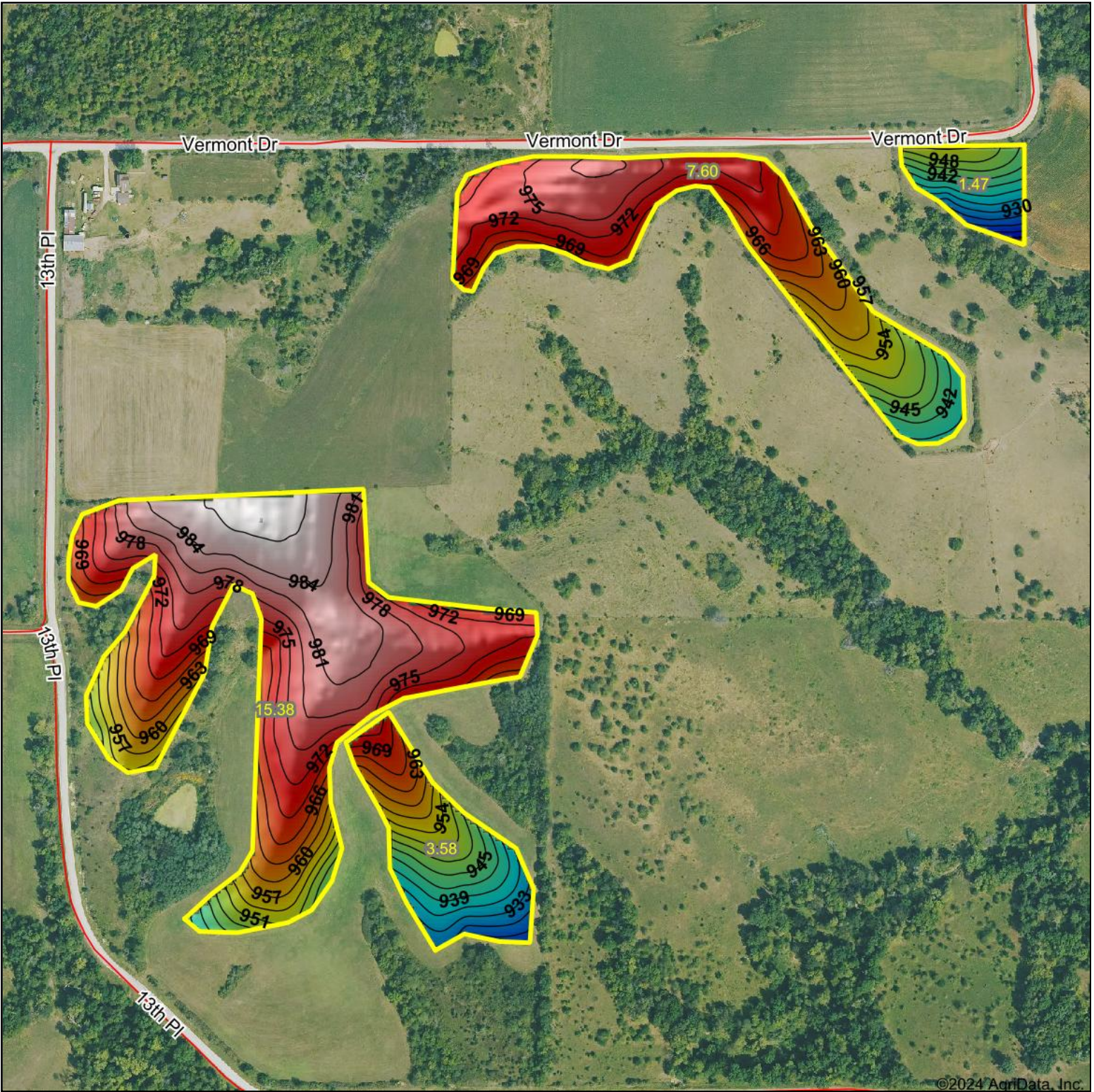
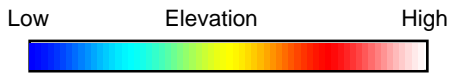


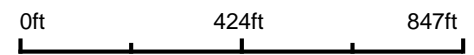
Topography Hillshade



©2024 AgriData, Inc.



Source: USGS 3 meter dem
Interval(ft): 3
Min: 920.6
Max: 987.9
Range: 67.3
Average: 966.2
Standard Deviation: 14.67 ft



30-74N-21W
Marion County
Iowa

Boundary Center: 41° 10' 45.98, -93° 19' 6.53