



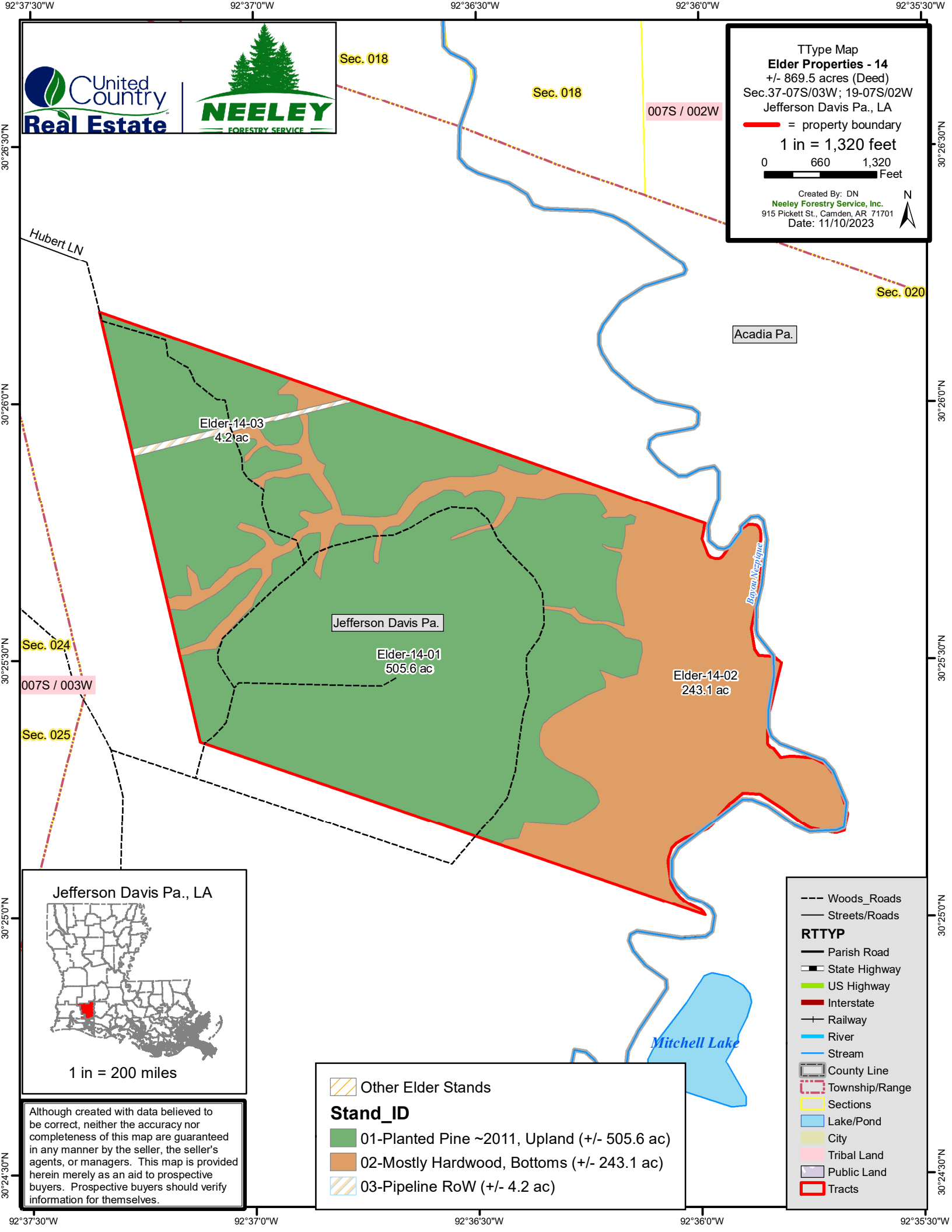
TType Map
Elder Properties - 14
 +/- 869.5 acres (Deed)
 Sec.37-07S/03W; 19-07S/02W
 Jefferson Davis Pa., LA

— = property boundary

1 in = 1,320 feet

0 660 1,320 Feet

Created By: DN
 Neeley Forestry Service, Inc.
 915 Pickett St., Camden, AR 71701
 Date: 11/10/2023



Jefferson Davis Pa., LA

1 in = 200 miles

Although created with data believed to be correct, neither the accuracy nor completeness of this map are guaranteed in any manner by the seller, the seller's agents, or managers. This map is provided herein merely as an aid to prospective buyers. Prospective buyers should verify information for themselves.

Stand_ID

- 01-Planted Pine ~2011, Upland (+/- 505.6 ac)
- 02-Mostly Hardwood, Bottoms (+/- 243.1 ac)
- 03-Pipeline RoW (+/- 4.2 ac)

- Woods_Roads
- Streets/Roads
- RTTYP**
- Parish Road
- State Highway
- US Highway
- Interstate
- Railway
- River
- Stream
- County Line
- Township/Range
- Sections
- Lake/Pond
- City
- Tribal Land
- Public Land
- Tracts