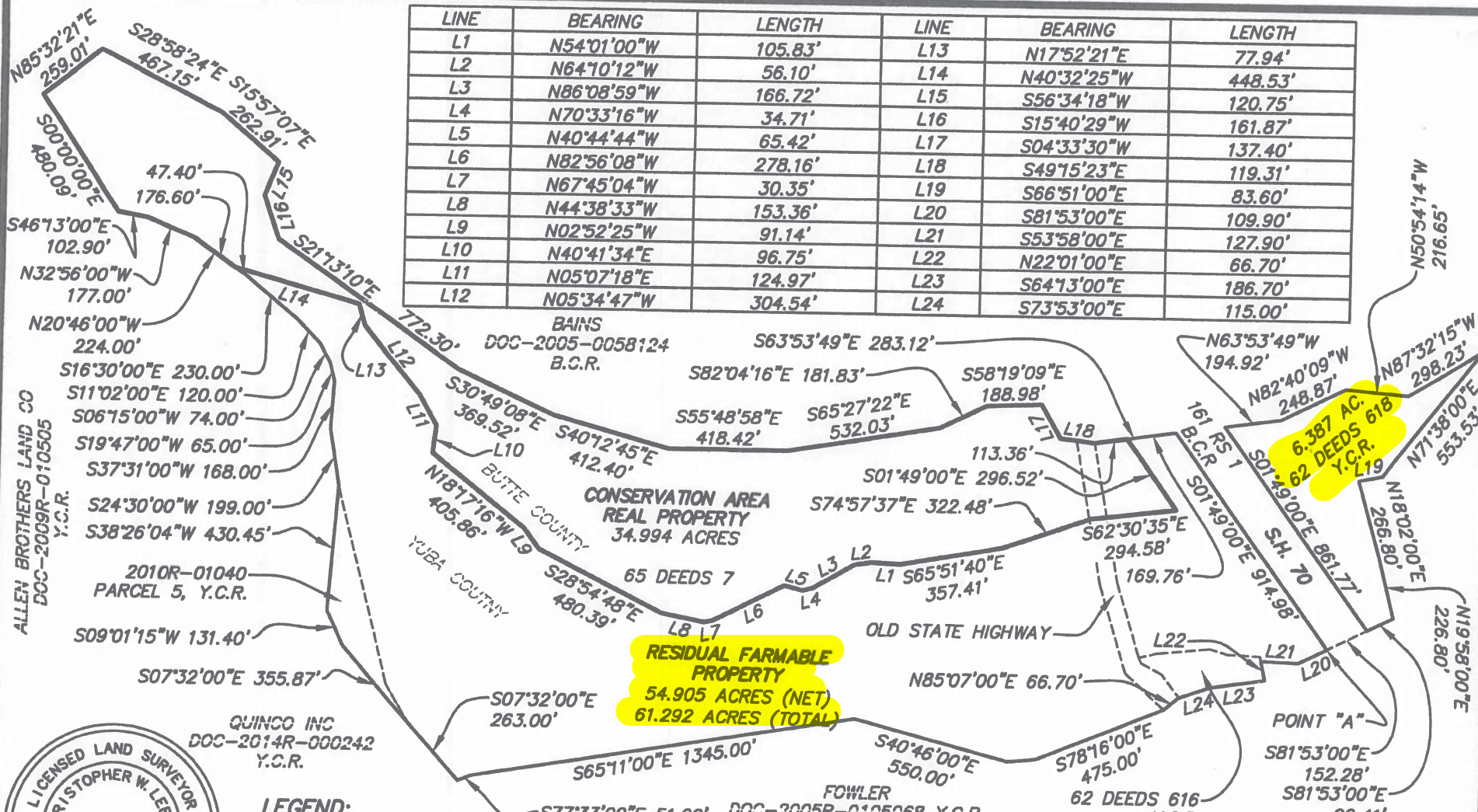


LINE	BEARING	LENGTH	LINE	BEARING	LENGTH
L1	N54°01'00"W	105.83'	L13	N17°52'21"E	77.94'
L2	N64°10'12"W	56.10'	L14	N40°32'25"W	448.53'
L3	N86°08'59"W	166.72'	L15	S56°34'18"W	120.75'
L4	N70°33'16"W	34.71'	L16	S15°40'29"W	161.87'
L5	N40°44'44"W	65.42'	L17	S04°33'30"W	137.40'
L6	N82°56'08"W	278.16'	L18	S49°15'23"E	119.31'
L7	N67°45'04"W	30.35'	L19	S66°51'00"E	83.60'
L8	N44°38'33"W	153.36'	L20	S81°53'00"E	109.90'
L9	N02°52'25"W	91.14'	L21	S53°58'00"E	127.90'
L10	N40°41'34"E	96.75'	L22	N22°01'00"E	66.70'
L11	N05°07'18"E	124.97'	L23	S64°13'00"E	186.70'
L12	N05°34'47"W	304.54'	L24	S73°53'00"E	115.00'



**LEGEND:**  
Y.C.R.- YUBA COUNTY RECORDS  
B.C.R.- BUTTE COUNTY RECORDS



SCALE: 1"=500'



*Christopher W. Lerch*  
**CHRISTOPHER W. LERCH**  
DATE **2-22-17**

THIS EXHIBIT WAS PREPARED BY ME OR UNDER MY DIRECTION IN ACCORDANCE WITH SECTION 8761 OF THE PROFESSIONAL LAND SURVEYORS' ACT.

**CONSERVATION AREA REAL PROPERTY AND RESIDUAL FARMABLE PROPERTY**

BEING A PORTION OF SECTIONS 23 & 24, TOWNSHIP 17 NORTH, RANGE 3 EAST, MOUNT DIABLO BASE AND MERIDIAN

UNINCORPORATED AREA OF YUBA & BUTTE COUNTIES, CA

**LM LAUGENOUR AND MEIKLE**  
CIVIL ENGINEERING · LAND SURVEYING · PLANNING

608 COURT STREET, WOODLAND, CALIFORNIA 95695 · PHONE: (530) 662-1755  
P.O. BOX 828, WOODLAND, CALIFORNIA 95776 · FAX: (530) 662-4602

SHEET 1 OF 1

FEBRUARY 22, 2017

#1604-11

10/10