

BEARINGS BASED ON TEXAS STATE PLANE COORDINATE SYSTEM, CENTRAL ZONE NAD 83.

MICHAEL GENE MEHAFFEY, et ux
SPECIAL WARRANTY DEED
CALLED 515,071 ACRES
MARCH 27, 1998
VOL. 308, PG. 345 R.P.R.H.C.

- LEGEND**
- 1/2" IRON PIN SET
 - W/YELLOW CAP "CCC 4835"
 - 1/2" IRON PIN SET
 - W/YELLOW CAP "CCC 4835"
 - (UNLESS OTHERWISE NOTED)
 - SHINER "TODD 4835"
 - SHINER "TODD 4835"
 - MAG NAIL SET W/SHINER "CCC 4835"
 - W/SHINER "CCC 4835"
 - CALCULATED POINT
 - UTILITY POLE
 - OVERHEAD UTILITY LINES
 - SIGN (AS NOTED)
 - PIPE FENCE POST (AS NOTED)
 - WIRE FENCE
 - RECORD DATA
 - REAL PROPERTY RECORDS
 - R.P.R.H.C. HAMILTON COUNTY POINT OF BEGINNING



CREEKSIDE RANCH GROUP, LLC
WARRANTY DEED
W/VENDOR'S LIEN
CALLED 806.35 ACRES
DATED JULY 20, 2018
VOL. 538, PG. 7 R.P.R.H.C.

TRAVIS NECH, LLC
WARRANTY DEED W/VENDOR'S LIEN
CALLED 131.54 ACRES
DATED MAY 4, 2019
VOL. 548, PG. 327 R.P.R.H.C.

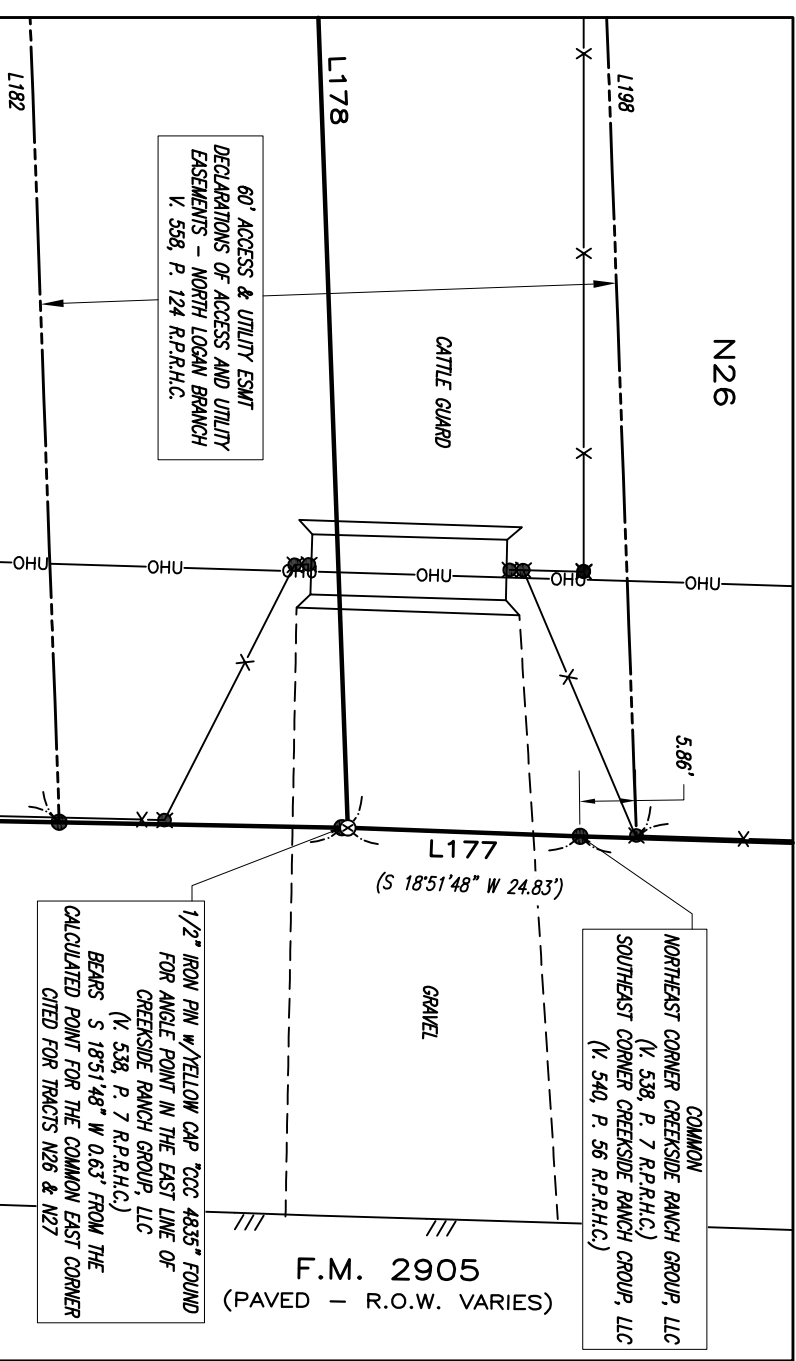
MIKE MEHAFFEY, et ux
GENERAL WARRANTY DEED
CALLED 1,728 ACRES
APRIL 1, 2010
VOL. 444, PG. 404 R.P.R.H.C.

BARBARA BROWN CUNEO
WARRANTY DEED (TRACT ONE)
CALLED 290 ACRES
DECEMBER 8, 1993
VOL. 287, PG. 201 R.P.R.H.C.

CREEKSIDE RANCH GROUP, LLC
WARRANTY DEED W/VENDOR'S LIEN
CALLED 133,66 ACRES
DATED SEPTEMBER 27, 2018
VOL. 540, PG. 56 R.P.R.H.C.

CREEKSIDE RANCH GROUP, LLC
WARRANTY DEED
W/VENDOR'S LIEN
CALLED 806.35 ACRES
DATED JULY 20, 2018
VOL. 538, PG. 7 R.P.R.H.C.

TRAVIS NECH, LLC
WARRANTY DEED W/VENDOR'S LIEN
CALLED 131.54 ACRES
DATED MAY 4, 2019
VOL. 548, PG. 327 R.P.R.H.C.



COMMON
NORTHEAST CORNER CREEKSIDE RANCH GROUP, LLC
(V. 538, P. 7 R.P.R.H.C.)
SOUTHWEST CORNER CREEKSIDE RANCH GROUP, LLC
(V. 540, P. 56 R.P.R.H.C.)

1/2" IRON PIN W/YELLOW CAP "CCC 4835" FOUND FOR ANGLE FROM IN THE EAST LINE OF CREEKSIDE RANCH GROUP, LLC BEARS S 18°51'48" W DIST FROM THE CALCULATED POINT FOR THE COMMON EAST CORNER CITED FOR TRACTS N26 & N27

F.M. 2905 (PAVED - R.O.W. VARIES)



LAVINIA LOYD SURVEY ABSTRACT NO. 1376

APPROXIMATE SURVEY ABSTRACT LINE BASED ON TXGLO GIS DATA

F.M. 2905 (PAVED - R.O.W. VARIES)

3/8" IRON PIN W/ILLEGIBLE RED CAP FOUND FOR NORTHEAST CORNER CREEKSIDE RANCH GROUP, LLC (V. 540, P. 56 R.P.R.H.C.)

Exhibit to Accompany Field Note Descriptions of TRACTS N-1 through N-32 NORTH LOGAN BRANCH AN UNRECORDED SUBDIVISION IN HAMILTON COUNTY, TEXAS

JOB No.: 180606-aen
DRAWN: AEN
F.C.: DBB/DB
PAGE 5 OF 6



March 8, 2020

INSET "B"
SCALE 1" = 20'

TRIPLE C SURVEYING CO.
P.O. Box 544 - Lompasos, Texas 76550
(512) 845-5440
email: admin@triplecsurveying.com
www.triplecsurveying.com
Firm No. 10193916