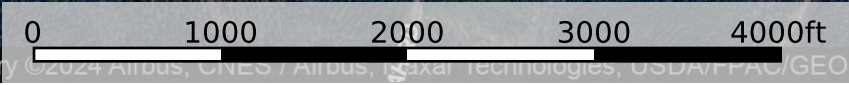


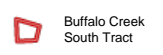
# Buffalo Creek South Tract

Kershaw County, South Carolina, 216.1 AC +/-



Google

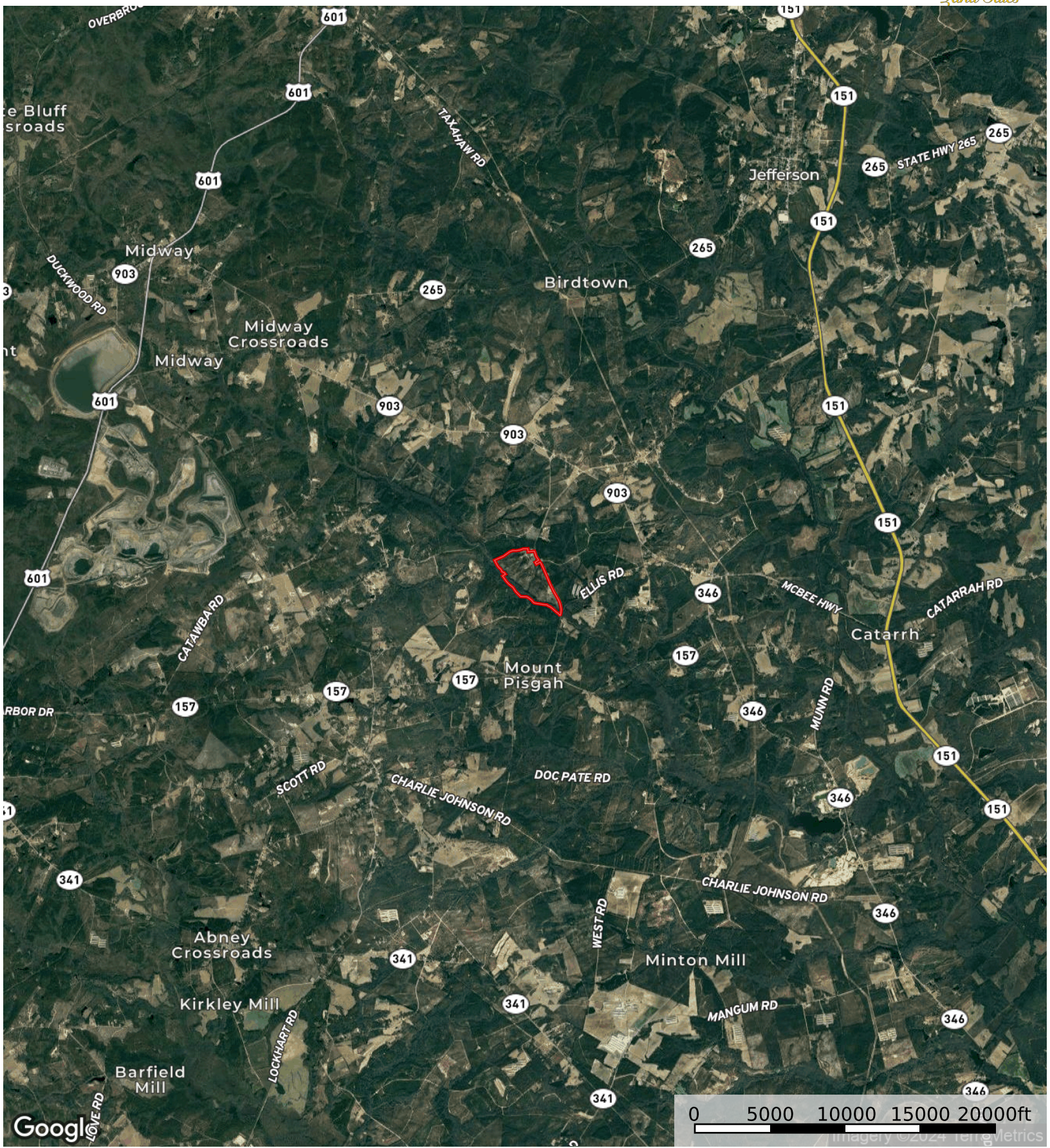
Imagery ©2024 Airbus, CNES / Airbus, Maxar Technologies, USDA/FRC/GEO



Buffalo Creek South Tract

# Buffalo Creek South Tract

Kershaw County, South Carolina, 216.1 AC +/-

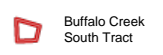
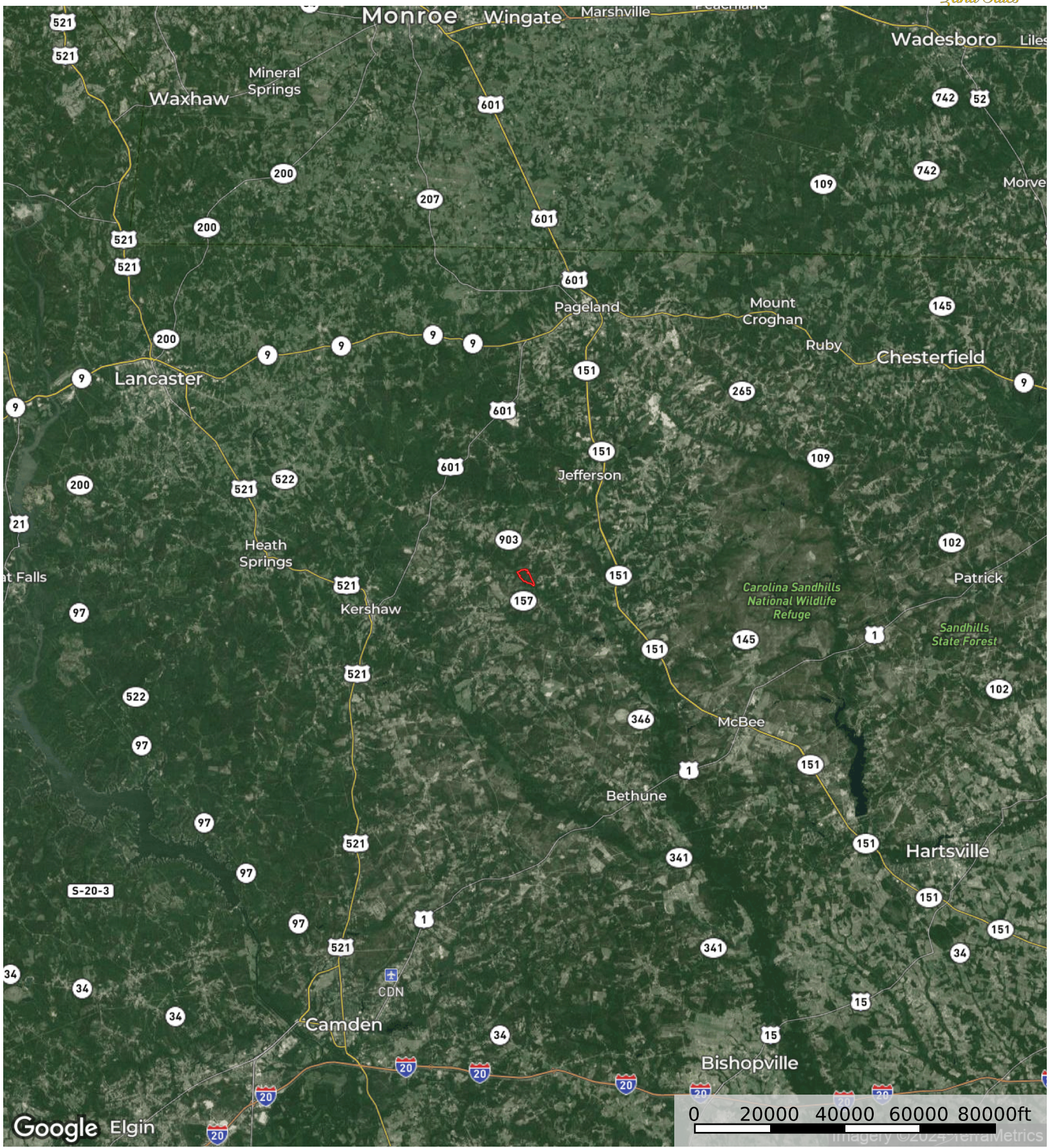


Google Imagery ©2024 TerraMetrics

Buffalo Creek South Tract

# Buffalo Creek South Tract

Kershaw County, South Carolina, 216.1 AC +/-



Buffalo Creek South Tract

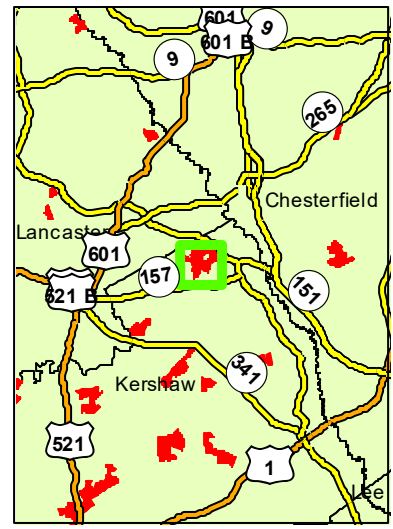


# MC8953\_C\_CTT

Parcel Acres: 216.1



**PollatchDelic**  
1 in = 0.32 miles



STAND	ACRES	YrEST	SIE	SIB	PAvgHt	COVER TYPE	PTP	PTCNS	PTS	HTP	HTS
508020003	2.1	1930	70	50		Hardwood Bottomland			0.9	62.0	1.3
508020004	26.0	1930	88	50		Hardwood Bottomland				46.7	60.2
508020009	186.7	2023	68	25		Pine					
508020025	0.8	2016	0	0		NP - Utility ROW					
508020041	0.1	1993	68	25		Pine	48.1	11.6	51.8	16.3	
508020050	0.2	2013	50	25		Pine	13.8	1.0			
508020059	0.1	2017	71	25		Pine	9.5				
TOTAL TONS							8.6	1.4	7.1	1344.7	1566.9

