




Google

0 500 1000 1500 2000ft

Imagery ©2024 Airbus, CNES / Airbus, Maxar Technologies, USDA/FPAC/GEO

 Buffalo Creek North Tract

Buffalo Creek North Tract

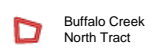
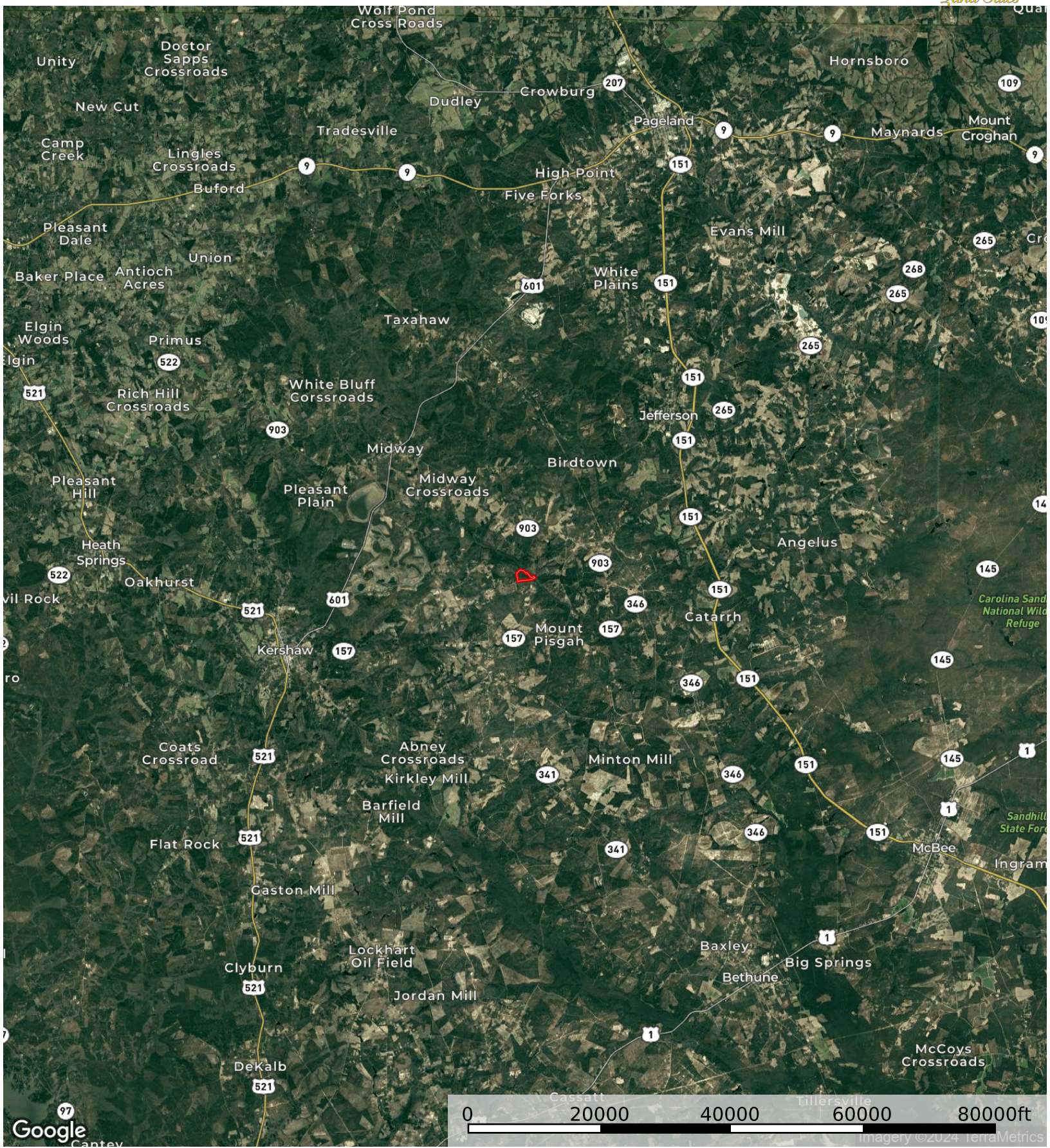
Kershaw County, South Carolina, 63.6 AC +/-



Google

Buffalo Creek North Tract

Kershaw County, South Carolina, 63.6 AC +/-



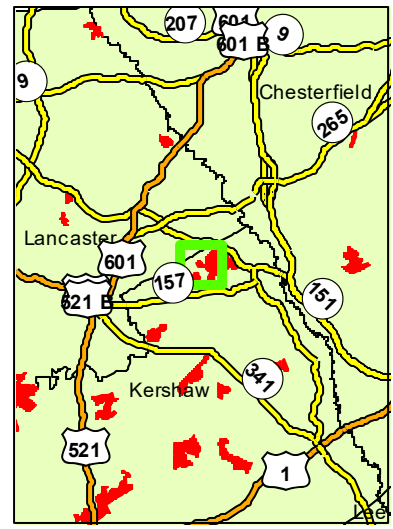
MC8953_F_CTT

Parcel Acres: 63.6



PollatchDeltic

1 in = 0.32 miles



STAND	ACRES	YrEST	SIE	SIB	PAvgHt	COVER TYPE	PTP	PTCNS	PTS	HTP	HTS
508020004	8.3	1930	88	50		Hardwood Bottomland				46.7	60.2
508020050	55.4	2013	50	25		Pine	13.8	1.0			
TOTAL TONS							764.0	54.3		387.2	499.3

