

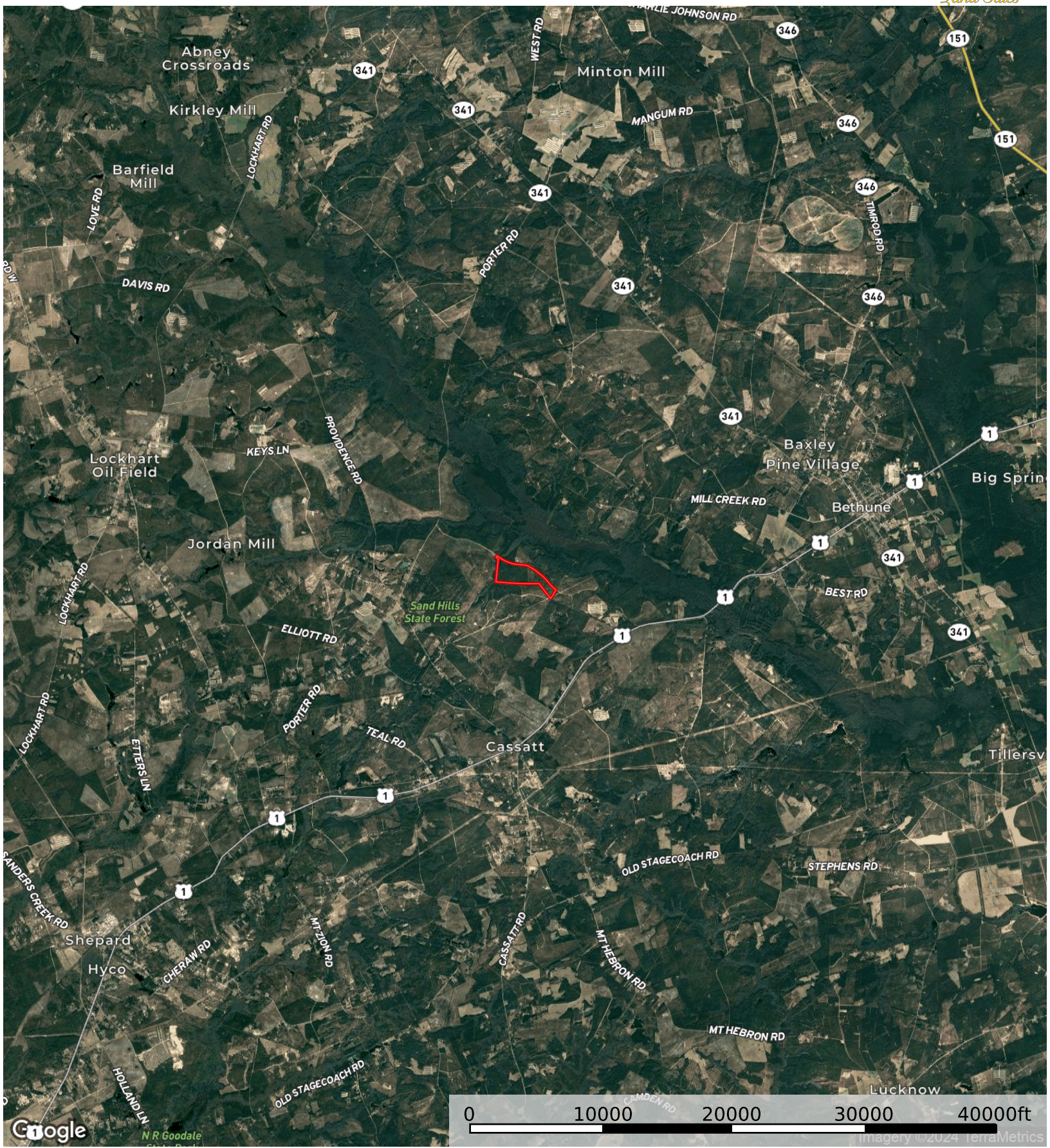


Google

Imagery ©2024 Airbus, CNES / Airbus, Maxar Technologies, USDA/FAO/Geo

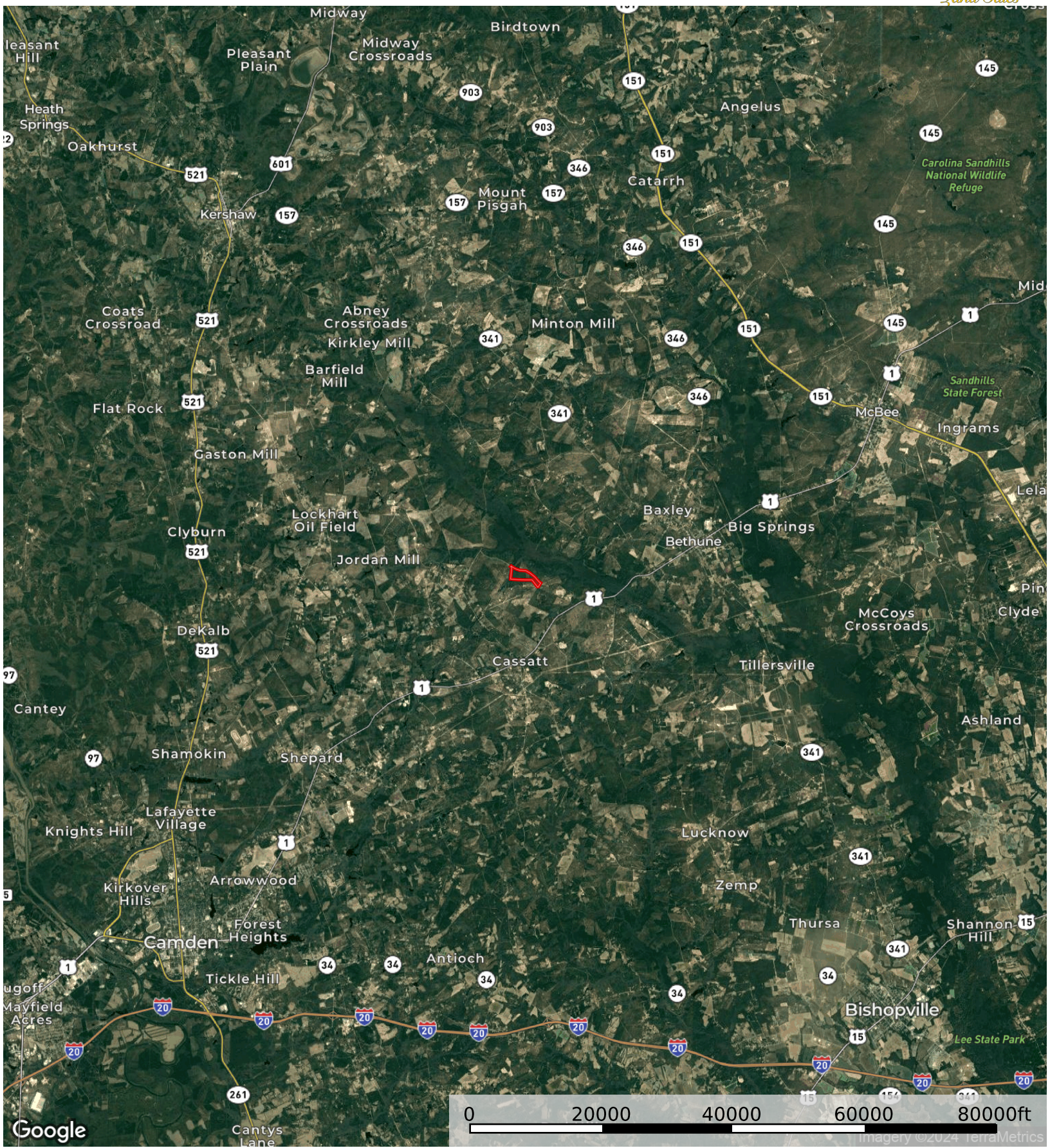
# Cassatt Tract

Kershaw County, South Carolina, 132.9 AC +/-



# Cassatt Tract

Kershaw County, South Carolina, 132.9 AC +/-

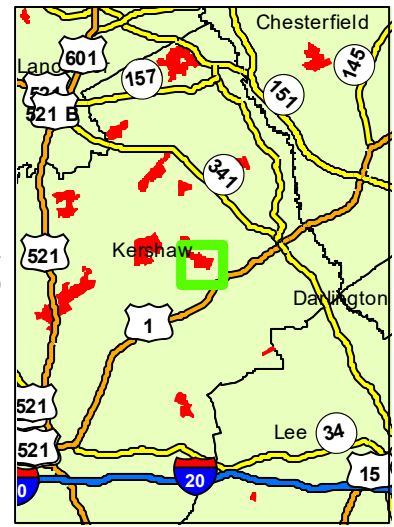


# MC8929\_E\_A\_CTT

Parcel Acres: 132.9



**PollatchDelic**  
1 in = 0.32 miles



| STAND             | ACRES | YrEST | SIE | SIB | PAvgHt | COVER TYPE          | PTP           | PTCNS        | PTS        | HTP          | HTS         |
|-------------------|-------|-------|-----|-----|--------|---------------------|---------------|--------------|------------|--------------|-------------|
| 508008001         | 43.8  | 2020  | 53  | 25  |        | Pine                |               |              |            |              |             |
| 508008005         | 0.4   | 2016  | 0   | 0   |        | NP - Utility ROW    |               |              |            |              |             |
| 508008006         | 0.0   | 2021  | 65  | 25  |        | Pine                |               |              |            |              |             |
| 508008009         | 0.1   | 2017  | 69  | 25  |        | Pine                | 18.8          |              |            |              |             |
| 508008010         | 4.5   | 1920  | 57  | 50  |        | Hardwood Bottomland | 5.3           |              |            | 72.2         | 3.7         |
| 508008012         | 7.0   | 1920  | 55  | 50  |        | Hardwood Bottomland | 6.1           | 4.7          | 1.0        | 42.9         | 4.0         |
| 508008022         | 77.0  | 2009  | 71  | 25  |        | Pine                | 37.8          | 5.9          |            | 0.2          |             |
| <b>TOTAL TONS</b> |       |       |     |     |        |                     | <b>2982.1</b> | <b>488.1</b> | <b>6.8</b> | <b>642.1</b> | <b>44.8</b> |

