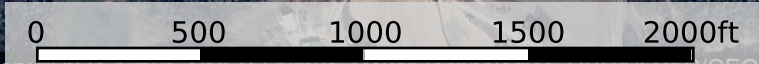


Sandy Grove Tract

Kershaw County, South Carolina, 106.9 AC +/-

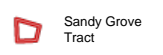
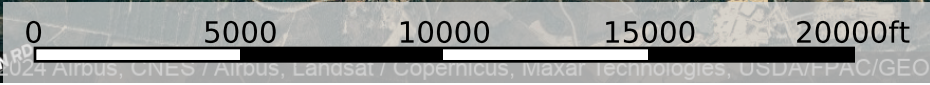
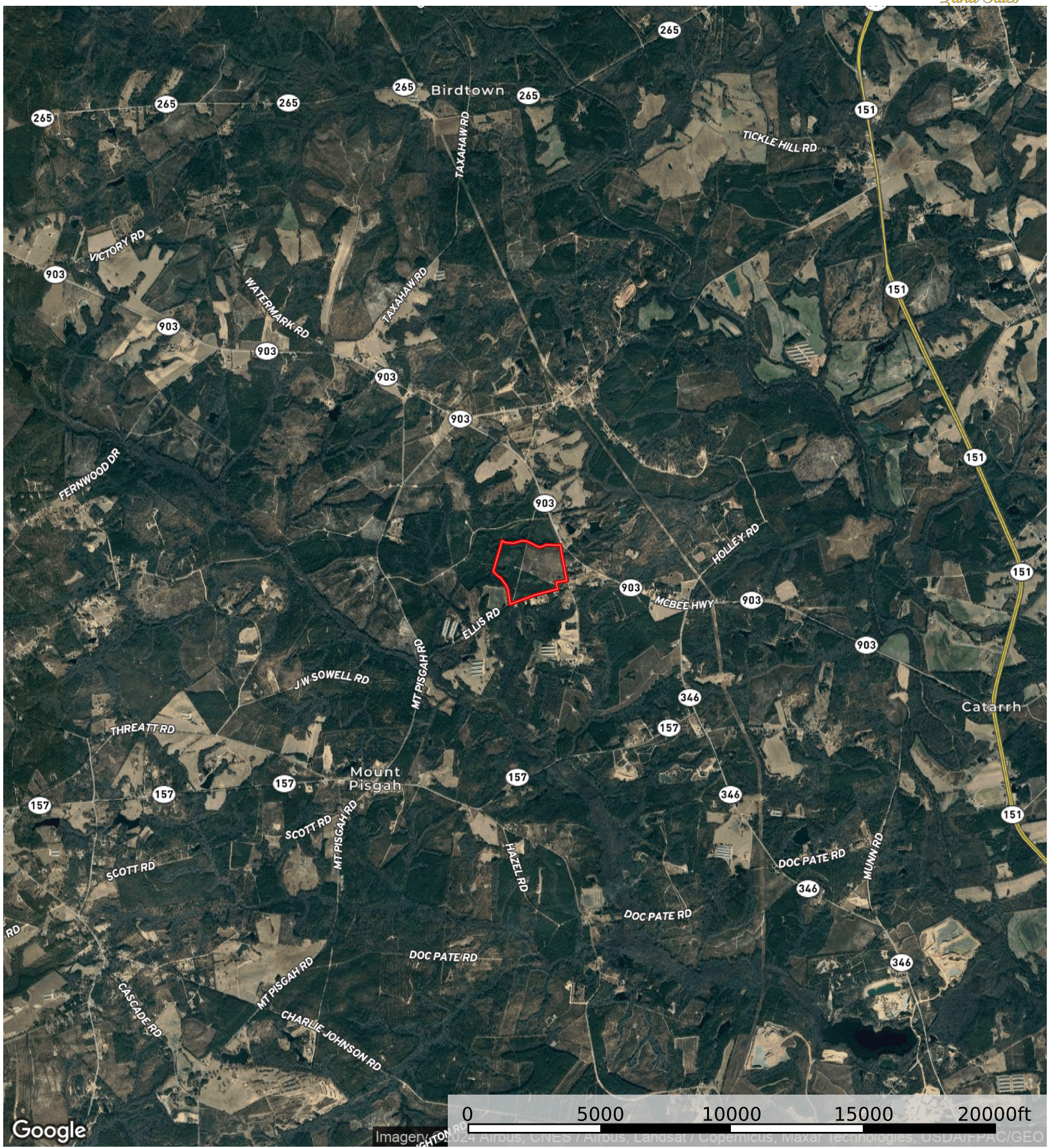


Google

Imagery ©2024 Airbus, CNES / Airbus, Maxar Technologies, USDA/FAO/Geo



Sandy Grove Tract

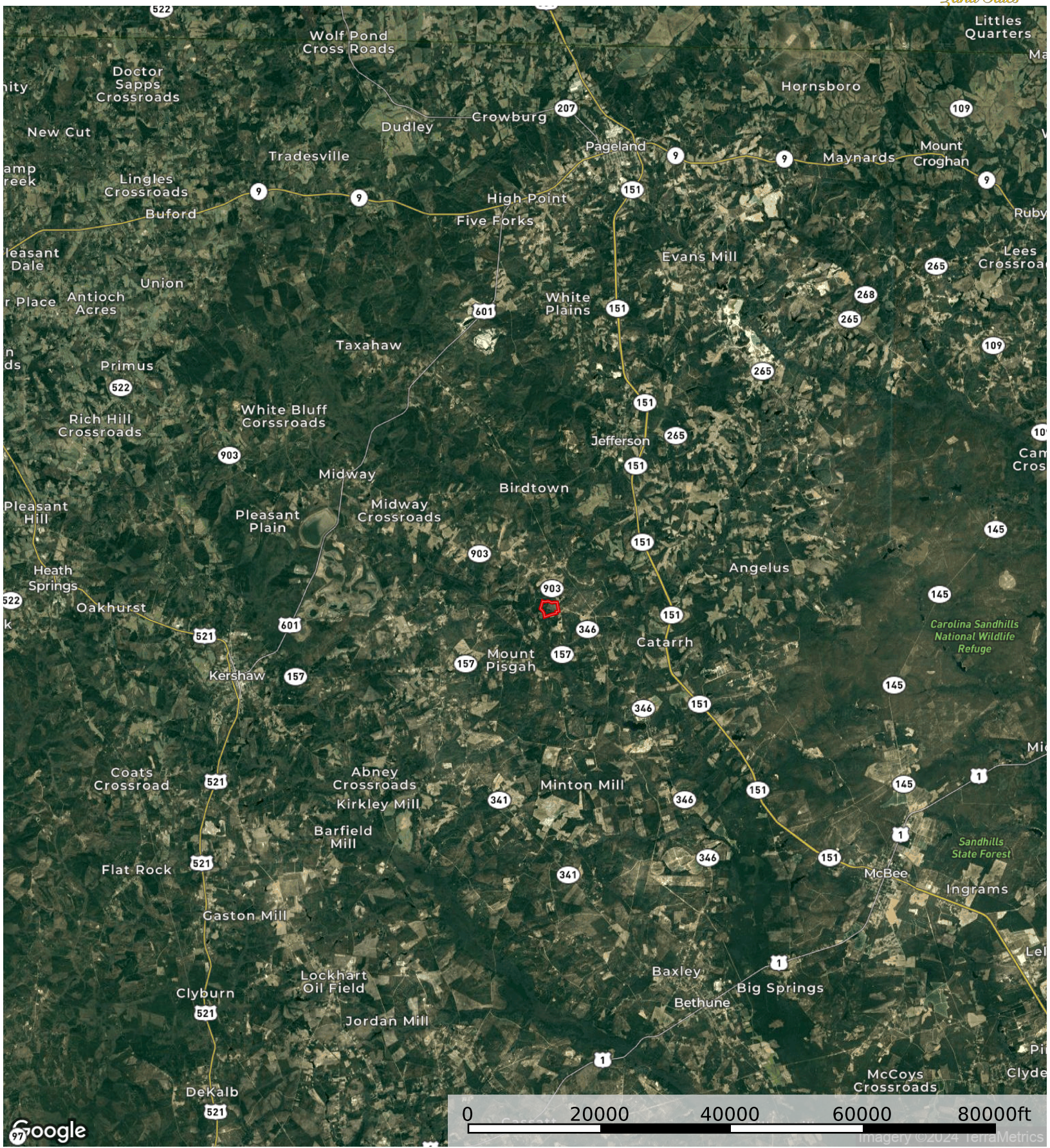


Sandy Grove Tract



Sandy Grove Tract

Kershaw County, South Carolina, 106.9 AC +/-



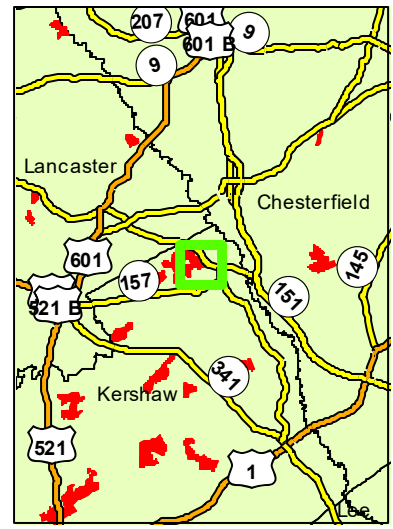
Sandy Grove Tract

MC8953_N_CTT

Parcel Acres: 106.9



1 in = 0.32 miles



STAND	ACRES	YrEST	SIE	SIB	PAvgHt	COVER TYPE	PTP	PTCNS	PTS	HTP	HTS
508020002	0.9		0	0		NP - Log Deck/Landing					
508020003	9.6	1930	70	50		Hardwood Bottomland			0.9	62.0	1.3
508020013	53.5	2020	67	25		Pine					
508020025	3.3	2016	0	0		NP - Utility ROW					
508020095	39.7	2023	65	25		TNP recent cut-over or burn			8.5	595.1	12.1
TOTAL TONS											

