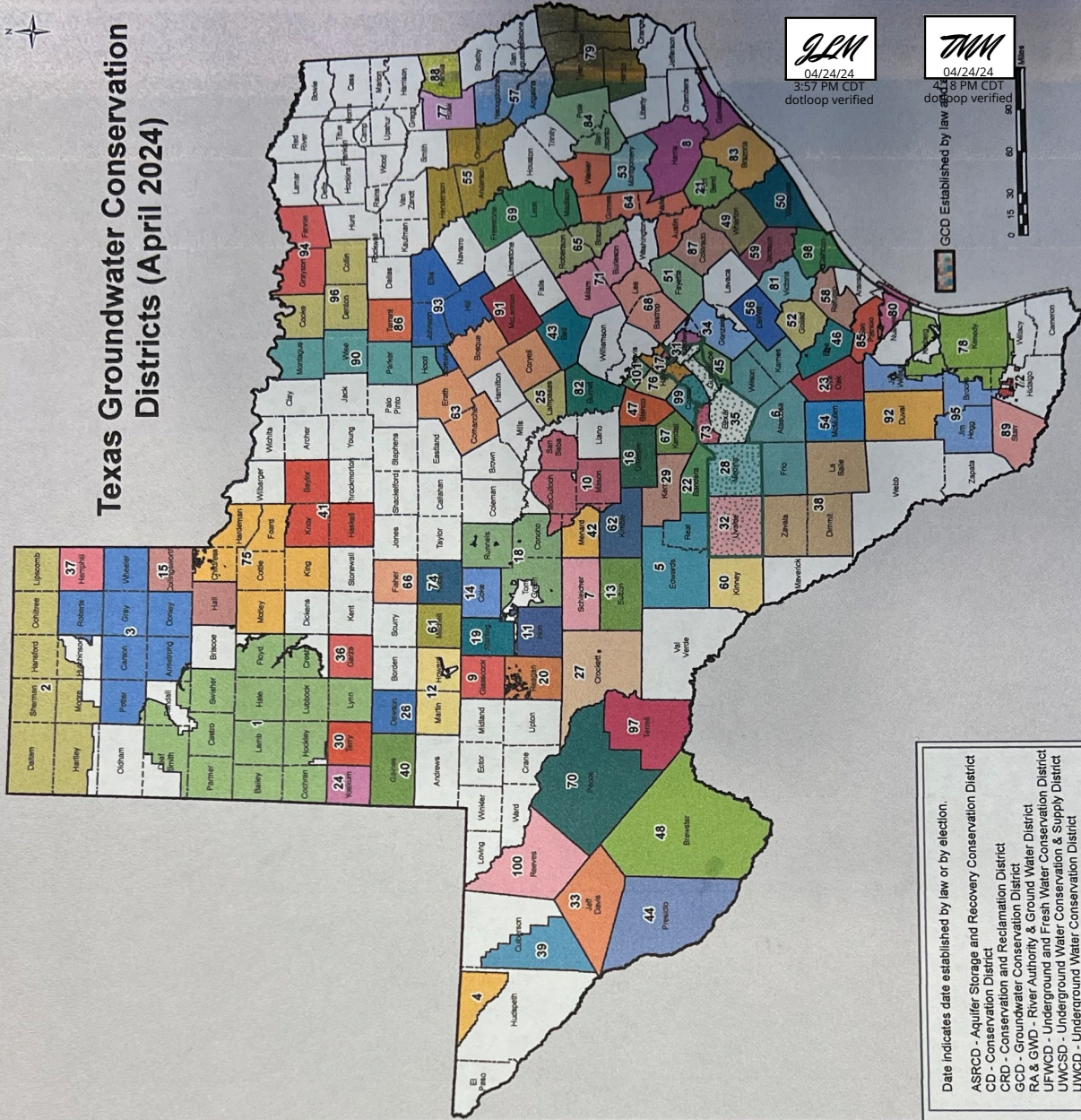


Groundwater Conservation Districts

- 1 High Plains UWCD No.1 - 9/29/1951
- 2 North Plains GCD - 1/2/1955
- 3 Panhandle GCD - 1/21/1956
- 4 Hudspeath County UWCD No. 1 - 10/5/1957
- 5 Real-Edwards C and R District - 5/30/1959
- 6 Evergreen UWCD - 8/30/1965
- 7 Plateau UWC and Supply District - 3/4/1974
- 8 Harris-Galveston Subsidence District - 4/23/1975
- 9 Glasscock GCD - 8/22/1981
- 10 Hickory UWCD No. 1 - 8/14/1982
- 11 Iron County WCD - 8/2/1985
- 12 Permian Basin UWCD - 9/21/1985
- 13 Sutton County UWCD - 4/5/1986
- 14 Coke County UWCD - 11/4/1986
- 15 Mesquite GCD - 11/4/1986
- 16 Hill Country UWCD - 8/8/1987
- 17 Barton Springs/Edwards Aquifer CD - 8/13/1987
- 18 Lipan-Kickapoo WCD - 11/3/1987
- 19 Sterling County UWCD - 11/3/1987
- 20 Santa Rita UWCD - 8/19/1989
- 21 Fort Bend Subsidence District - 8/28/1989
- 22 Bandera County RA & GWD - 11/7/1989
- 23 Live Oak UWCD - 11/7/1989
- 24 Sandy Land UWCD - 11/7/1989
- 25 Saratoga UWCD - 11/7/1989
- 26 Mesa UWCD - 1/20/1990
- 27 Crockett County GCD - 1/26/1991
- 28 Medina County GCD - 8/26/1991
- 29 Headwaters UWCD - 11/5/1991
- 30 South Plains UWCD - 2/8/1992
- 31 Plum Creek CD - 5/1/1993
- 32 Uvalde County UWCD - 9/1/1993
- 33 Jeff Davis County UWCD - 11/2/1993
- 34 Gonzales County UWCD - 11/2/1994
- 35 Edwards Aquifer Authority - 7/28/1996
- 36 Garza County UWCD - 11/5/1996
- 37 Hemphill County UWCD - 11/4/1997
- 38 Wintergarden GCD - 1/17/1998
- 39 Culberson County GCD - 5/2/1998
- 40 Llano Estacado UWCD - 11/3/1998
- 41 Rolling Plains GCD - 1/26/1999
- 42 Menard County UWCD - 8/14/1999
- 43 Clearwater UWCD - 8/21/1999
- 44 Presidio County UWCD - 8/31/1999
- 45 Guadalupe County GCD - 11/14/1999
- 46 Bee GCD - 1/20/2001
- 47 Blanco-Pedernales GCD - 1/23/2001
- 48 Brewster County GCD - 11/6/2001
- 49 Coastal Bend GCD - 11/6/2001
- 50 Coastal Plains GCD - 11/6/2001
- 51 Fayette County GCD - 11/6/2001
- 52 Goliad County GCD - 11/6/2001
- 53 Lone Star GCD - 11/6/2001
- 54 McMullen GCD - 11/6/2001
- 55 Neches & Trinity Valleys GCD - 11/6/2001
- 56 Pecan Valley GCD - 11/6/2001
- 57 Pineywoods GCD - 11/6/2001
- 58 Refugio GCD - 11/6/2001
- 59 Texana GCD - 11/6/2001
- 60 Kinsey County GCD - 11/2/2002
- 61 Lone Wolf GCD - 2/2/2002
- 62 Kimble County GCD - 5/3/2002
- 63 Middle Trinity GCD - 5/4/2002
- 64 Bluebonnet GCD - 11/5/2002
- 65 Brazos Valley GCD - 11/5/2002
- 66 Clear Fork GCD - 11/5/2002
- 67 Cow Creek GCD - 11/5/2002
- 68 Lost Pines GCD - 11/5/2002
- 69 Mid-East Texas GCD - 11/5/2002
- 70 Middle Pecos GCD - 11/5/2002
- 71 Post Oak Savannah GCD - 11/5/2002
- 72 Red Sands GCD - 11/5/2002
- 73 Trinity Glen Rose GCD - 11/5/2002
- 74 Wes-Tex GCD - 11/5/2002
- 75 Galloway GCD - 5/3/2003
- 76 Hays Trinity GCD - 5/3/2003
- 77 Rusk County GCD - 6/5/2004
- 78 Kennedy County GCD - 11/2/2004
- 79 Southeast Texas GCD - 11/2/2004
- 80 Corpus Christi ASRCD - 6/17/2005
- 81 Victoria County GCD - 8/5/2005
- 82 Central Texas GCD - 9/24/2005
- 83 Brazoria County GCD - 11/8/2005
- 84 Lower Trinity GCD - 11/7/2006
- 85 San Patricio County GCD - 5/12/2007
- 86 Northern Trinity GCD - 5/15/2007
- 87 Colorado County GCD - 11/6/2007
- 88 Panola County GCD - 11/6/2007
- 89 Starr County GCD - 11/6/2007
- 90 Upper Trinity GCD - 11/6/2007
- 91 Southern Trinity GCD - 6/19/2009
- 92 Duval County GCD - 7/25/2009
- 93 Prairielands GCD - 9/1/2009
- 94 Red River GCD - 9/1/2009
- 95 Brush County GCD - 11/3/2009
- 96 North Texas GCD - 12/1/2009
- 97 Terrell County GCD - 11/6/2012
- 98 Calhoun County GCD - 11/4/2014
- 99 Comal Trinity GCD - 6/17/2015
- 100 Reeves County GCD - 11/3/2015
- 101 Southwestern Travis County GCD - 11/6/2019

Texas Groundwater Conservation Districts (April 2024)



Date indicates date established by law or by election.

ASRCD - Aquifer Storage and Recovery Conservation District
 CD - Conservation District
 CRD - Conservation and Reclamation District
 GCD - Groundwater Conservation District
 RA & GWD - River Authority & Ground Water District
 UFWCD - Underground and Fresh Water Conservation District
 UWCD - Underground Water Conservation & Supply District
 UWCD - Underground Water Conservation District
 WD - Water District

TEXAS COMMISSION ON ENVIRONMENTAL QUALITY



This map was generated by the Water Availability Division of the Texas Commission on Environmental Quality. This product is for informational purposes and may not have been prepared for or be suitable for legal, engineering, or surveying purposes. It does not represent an on-the-ground survey and represents only the approximate relative location of property boundaries. For more information concerning this map, contact the Water Availability Division at (512) 239-4600.