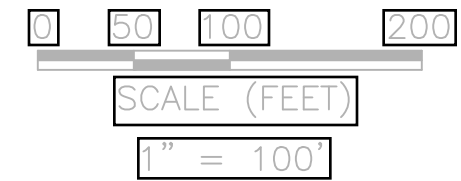
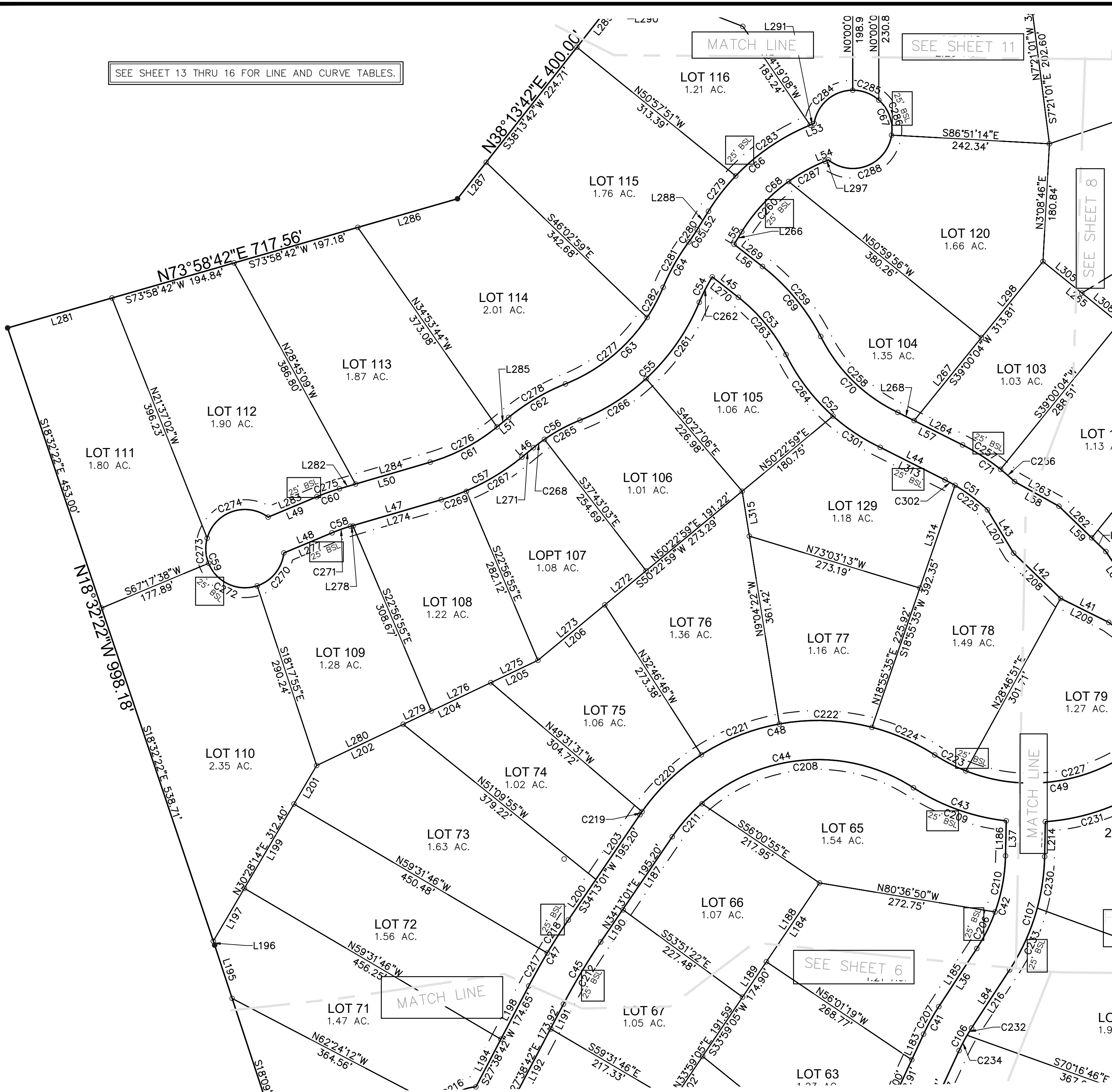


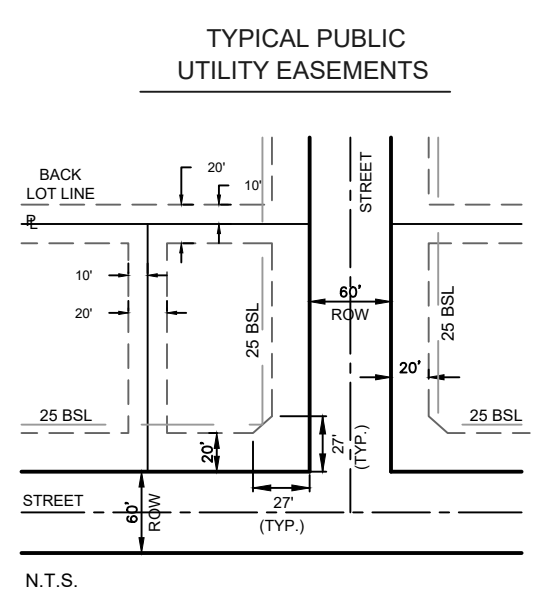
SEE SHEET 13 THRU 16 FOR LINE AND CURVE TABLES.

SEE SHEET 11

SEE SHEET 6



LEGEND	
●	1/2" DIAMETER IRON PINS FOUND
■	SPINDLE FOUND
⊙	60D NAIL FOUND
⊛	4" FENCE POST FOUND
○	1/2" DIAMETER IRON PINS SET
ESMT	EASEMENT
BSL	BUILDING SETBACK LINE
---	ADJACENT PROPERTY LINES
- - -	EXISTING CONTOURS
---	SURVEY LINES
---	RIGHT-OF-WAY
D.E.	PUBLIC DRAINAGE EASEMENT
U.E.	PUBLIC UTILITY EASEMENT
OPRCCT	OFFICIAL PUBLIC RECORDS, COMAL COUNTY, TEXAS
MPRCCT	MAP & PLAT RECORDS, COMAL COUNTY, TEXAS



TYPICAL PUBLIC UTILITY EASEMENTS  
AN EASEMENT IS GRANTED TO PUBLIC UTILITIES, BEING 20 FEET ALONG THE ROAD FRONTAGE OF EACH LOT AND TEN FEET ALONG THE SIDE AND BACK LOT LINES. SUBJECT TO SPECIFIC EASEMENTS DESIGNATED ON PLAT.  
ALL PUBLIC UTILITY EASEMENTS AT ROAD INTERSECTIONS MAY BE GRANTED UP TO 27 FEET WITHIN THE 25 FOOT BUILDING SET BACK.

PARADISE ON THE GUADALUPE, UNIT 1

