

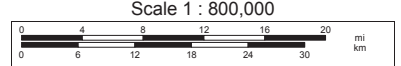
All information is assumed to be accurate and substantially correct but no assumptions of liability is intended. Neither the seller nor the agent or representatives warrant the completeness or accuracy of the information. Seller does not guarantee timber volumes, values, acreages (total, woodland/longland, stand or otherwise), tree ages or the condition and/or function of any improvements, including but not limited to all buildings, machinery, appliances, wells, equipment, livestock and ponds. No representatives or warranties are expressed or implied as to the property, its condition, boundaries or logging feasibility. Prospective buyers should satisfy themselves as to the accuracy of this information.



Data use subject to license.

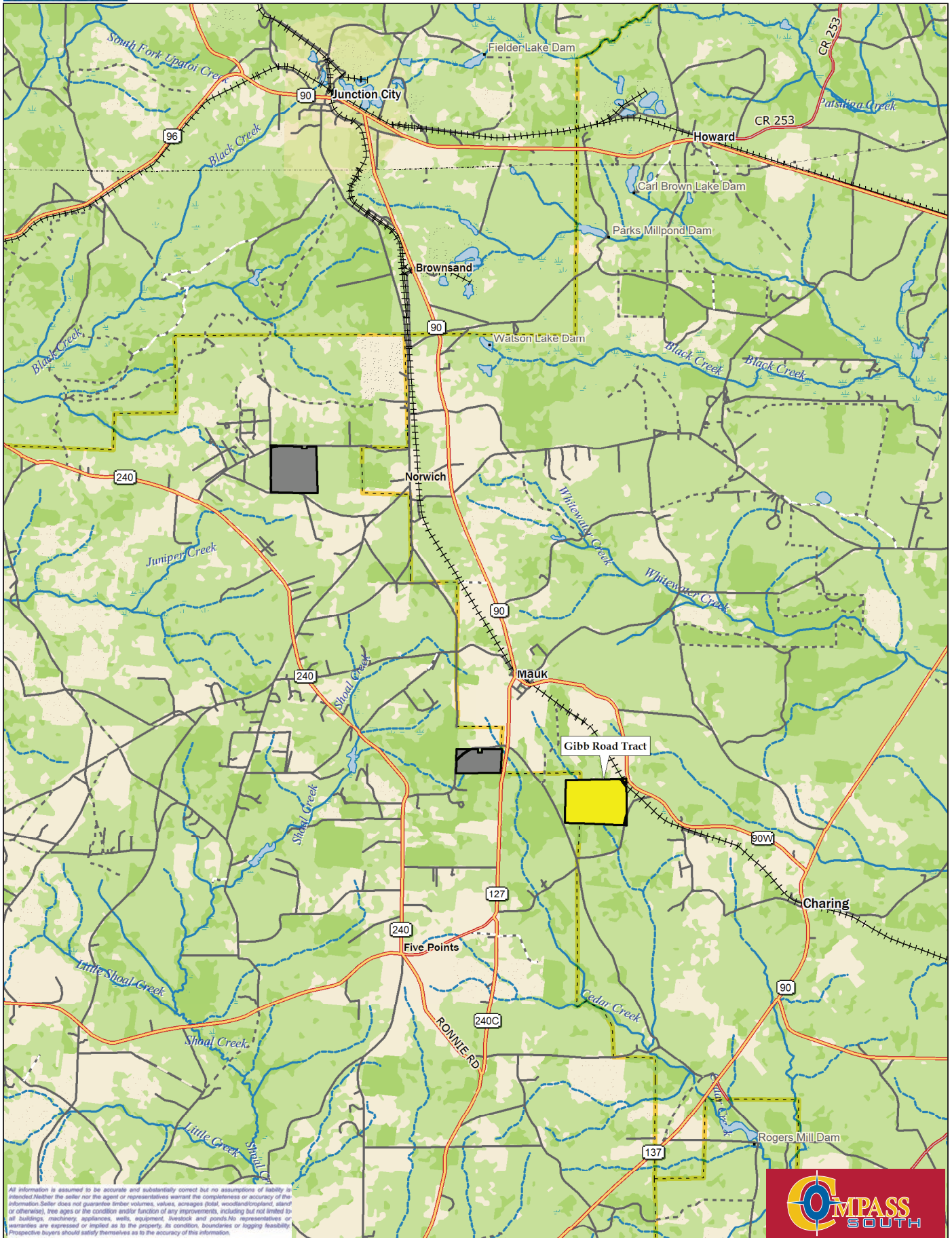
© DeLorme. XMap® 5.2 GIS Enterprise.

www.delorme.com



1" = 12.63 mi

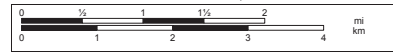
Data Zoom 8-0



All information is assumed to be accurate and substantially correct but no assumptions of liability is intended. Neither the seller nor the agent or representatives warrant the completeness or accuracy of the information. Seller does not guarantee timber volumes, values, acreages (total, woodland/impoundment, stand or otherwise), tree ages or the condition and/or function of any improvements, including but not limited to all buildings, machinery, appliances, wells, equipment, livestock and ponds. No representatives or warranties are expressed or implied as to the property, its condition, boundaries or logging feasibility. Prospective buyers should satisfy themselves as to the accuracy of this information.



Scale 1 : 100,000



1" = 1.58 mi Data Zoom 11-0

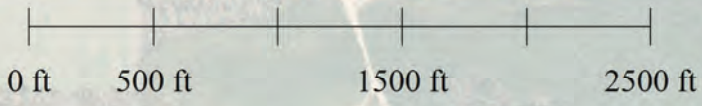


Gibb Road Tract

Taylor County, GA
+/- 259 Acres



All information is assumed to be accurate and substantially correct but no assumptions of liability is intended. Neither the seller nor the agent or representatives warrant the completeness or accuracy of the information. Seller does not guarantee timber volumes, values, acreages (total, woodland/cropland, stand or otherwise), tree ages or the condition and/or function of any improvements, including but not limited to all buildings, machinery, appliances, wells, equipment, livestock and ponds. No representatives or warranties are expressed or implied as to the property, its condition, boundaries or logging feasibility. Prospective buyers should satisfy themselves as to the accuracy of this information.

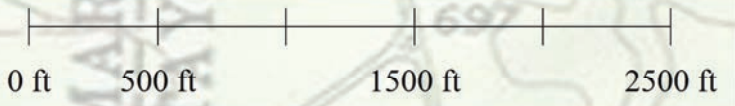


Gibb Road Tract

Taylor County, GA
+/- 259 Acres



All information is assumed to be accurate and substantially correct but no assumptions of liability is intended. Neither the seller nor the agent or representatives warrant the completeness or accuracy of the information. Seller does not guarantee timber volumes, values, acreages (total, woodland/cropland), stand or otherwise, tree ages or the condition and/or function of any improvements, including but not limited to all buildings, machinery, appliances, wells, equipment, livestock and ponds. No representatives or warranties are expressed or implied as to the property, its condition, boundaries or logging feasibility. Prospective buyers should satisfy themselves as to the accuracy of this information.



Gibb Road Tract

Taylor County, GA
 +/- 259 Acres



Stand #	Type	Acres
1	Hdwd Branch	2
2	Hdwd Branch	1
3	2002 PLOB	4
4	2002 PLOB	71
5	Non Forest	.2
6	Hdwd Branch	1
7	2002 PLOB	1
8	2016 PLOB	6
9	2016 PLOB	168
10	Hdwd Branch	5
Total		259

All information is assumed to be accurate and substantially correct but no assumptions of liability is intended. Neither the seller nor the agent or representatives warrant the completeness or accuracy of the information. Seller does not guarantee timber volumes, values, acreages (total, woodland/forepland, stand or otherwise), tree ages or the condition and/or function of any improvements, including but not limited to all buildings, machinery, appliances, wells, equipment, livestock and ponds. No representatives or warranties are expressed or implied as to the property, its condition, boundaries or logging feasibility. Prospective buyers should satisfy themselves as to the accuracy of this information.

