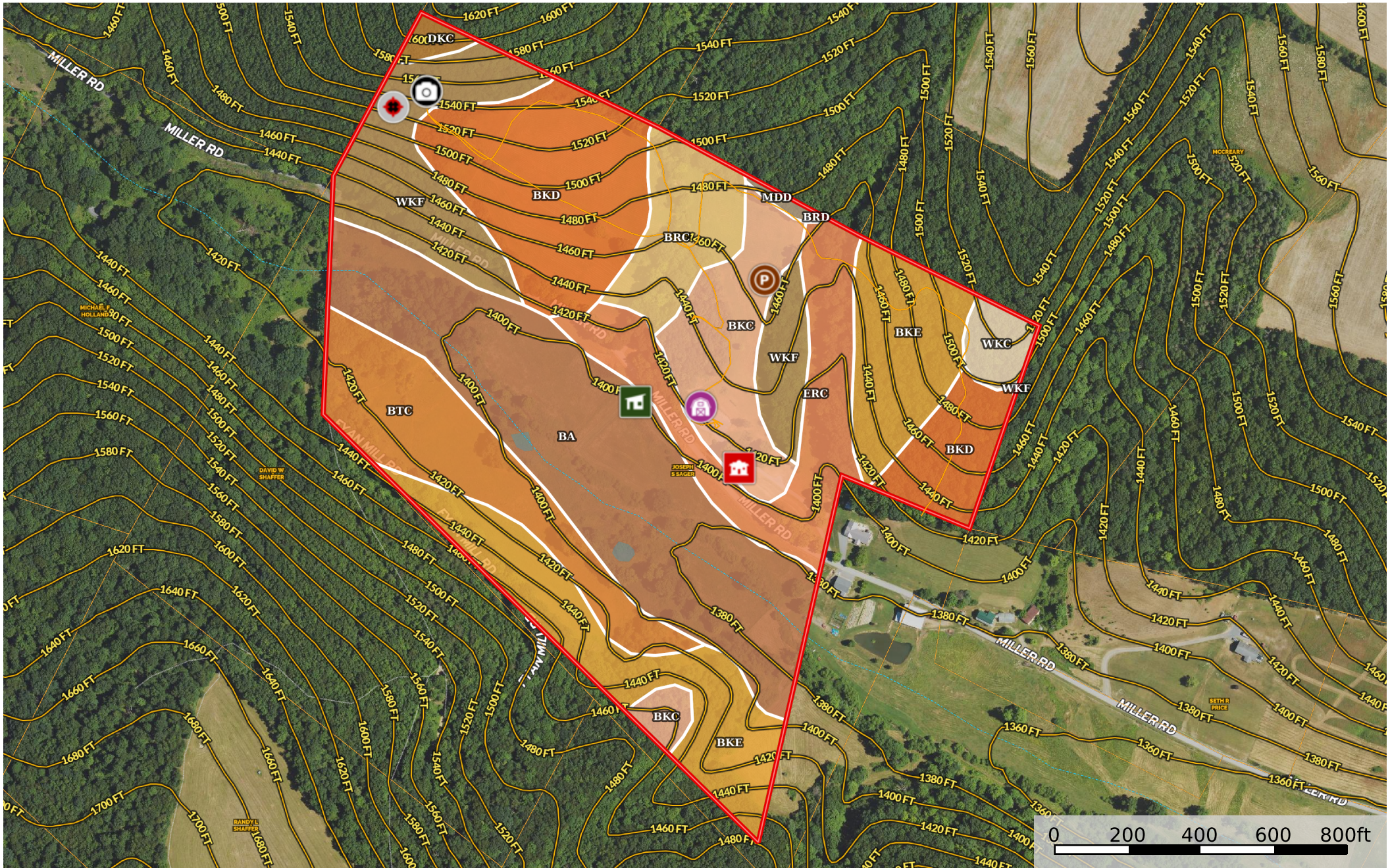


588 Miller Rd Schellsburg PA

Bedford County, Pennsylvania, 48.38 AC +/-



- Photo Point
- Blind
- Pens
- Shed / Shack
- Barn
- Main House
- Track
- Pond / Tank
- Boundary
- Forest Service
- State Land
- Fish and Wildlife
- National Park
- Other
- BLM
- Local Government
- Stream, Intermittent
- River/Creek
- Water Body

|  Boundary 52.77 ac

SOIL CODE	SOIL DESCRIPTION	ACRES	%	CPI	NCCPI	CAP
Ba	Basher silt loam	12.23	23.18	0	59	2w
BkE	Berks channery silt loam, 25 to 35 percent slopes	8.44	16.0	0	11	6e
BkD	Berks channery silt loam, 15 to 25 percent slopes	8.24	15.62	0	35	4e
WkF	Weikert channery silt loam, 35 to 65 percent slopes	5.48	10.39	0	6	7e
BtC	Brinkerton silt loam, 8 to 15 percent slopes	5.1	9.67	0	35	4w
ErC	Ernest silt loam, 8 to 15 percent slopes	4.95	9.38	0	52	3e
BkC	Berks channery silt loam, 8 to 15 percent slopes	4.25	8.06	0	43	3e
BrC	Blairton channery silt loam, 8 to 15 percent slopes	2.68	5.08	0	39	4e
WkC	Weikert channery silt loam, 8 to 15 percent slopes	0.84	1.59	0	25	4e
DkC	Dystrocrepts-Rock outcrop complex, 3 to 15 percent slopes	0.37	0.7	0	14	7s
MdD	Meckesville gravelly loam, 15 to 25 percent slopes, very stony	0.16	0.3	0	33	6s
BrD	Blairton channery silt loam, 15 to 25 percent slopes	0.03	0.06	0	34	6e
TOTALS		52.77(*)	100%	-	35.85	4.02









(*) Total acres may differ in the second decimal compared to the sum of each acreage soil. This is due to a round error because we only show the acres of each soil with two decimal.

Capability Legend

Increased Limitations and Hazards

Decreased Adaptability and Freedom of Choice Users

Land, Capability

								
	1	2	3	4	5	6	7	8
'Wild Life'	•	•	•	•	•	•	•	•
Forestry	•	•	•	•	•	•	•	
Limited	•	•	•	•	•	•	•	
Moderate	•	•	•	•	•	•		
Intense	•	•	•	•	•			
Limited	•	•	•	•				
Moderate	•	•	•					
Intense	•	•						
Very Intense	•							

Grazing Cultivation

(c) climatic limitations (e) susceptibility to erosion

(s) soil limitations within the rooting zone (w) excess of water