



**Desirably Located Just Southwest Of The Intersection Of The Hardy Toll Rd & The Grand Parkway With Frontage / Access To Both Riley Fuzzel & Aldine Westfield**

**Beau Harris / 936-523-0483 / 936-441-2610 / [Beau@BlackLabelCommercial.com](mailto:Beau@BlackLabelCommercial.com) - Hunter Spielman / 817-233-6663 / [HSpielman@BlackLabelCommercial.com](mailto:HSpielman@BlackLabelCommercial.com)**

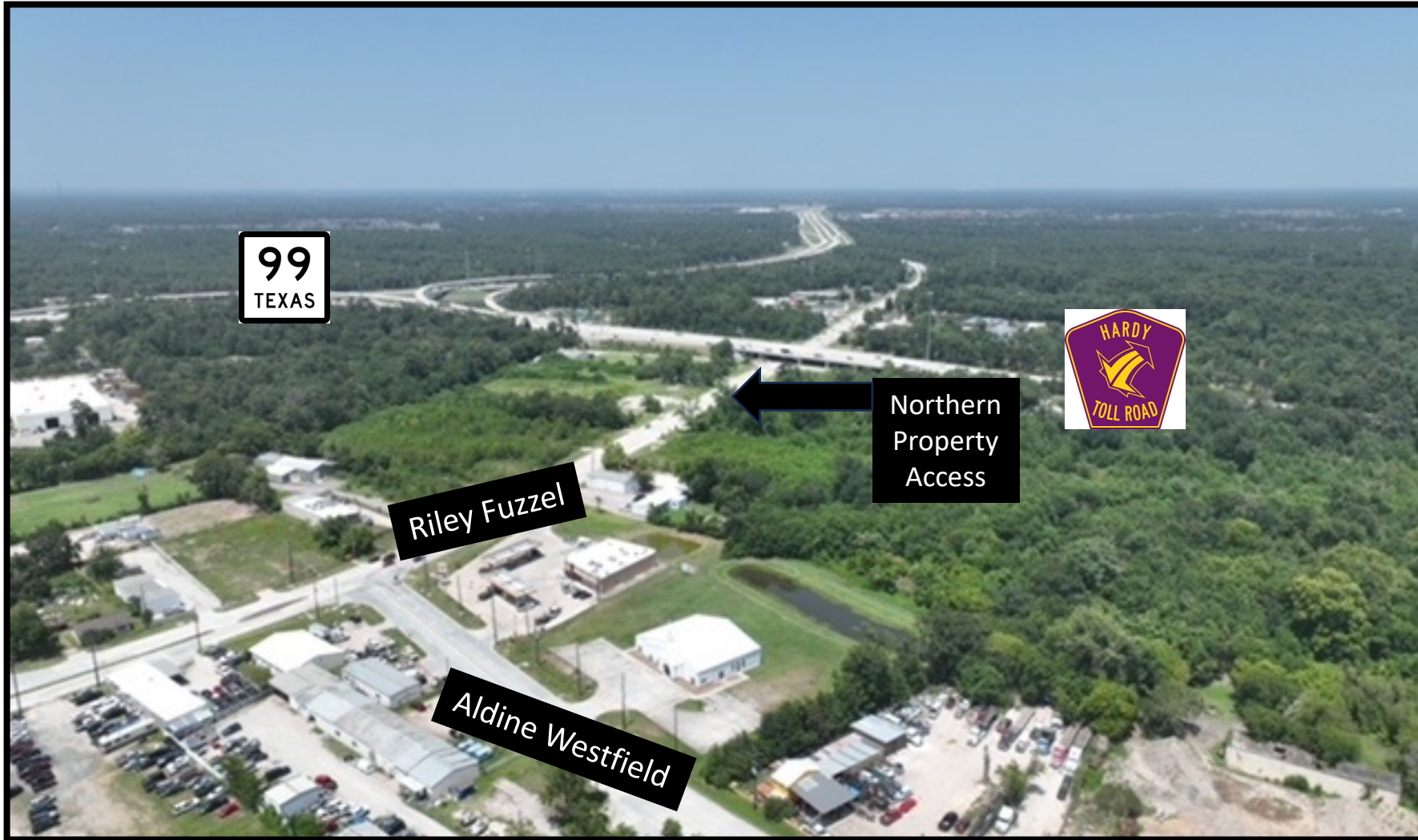
This information has been obtained from sources believed reliable. We have not verified it and make no guarantee, warranty or representation about it. Any projections, opinions, assumptions, or estimates used are for example only.



## Property Overview

- +/- 40 AC Tract Available Outlined in Red
- Unrestricted Land With Utilities On Site
- Dual Street Access From Riley Fuzzel & Multiple Points On Aldine Westfield
- 60' Access Easement To Aldine Westfield
- Directly Adjacent To Old Town Spring
- 6 Mi To Woodlands / 7.5 Mi To Bush IAH
- +/- 2,500 FF On The Hardy Toll Rd
- Additional +/- 9 AC Also Available Outlined in Orange = +/- 49 AC Total Available
- BTS Options / Turn-Key Projects Available

**PLEASE CONTACT BROKER FOR PRICING**



PLEASE CONTACT BROKER  
FOR ADDITIONAL  
INFORMATION ON PRICING  
AND DEVELOPMENT  
OPTIONS

**Beau Harris**

[Beau@BlackLabelCommercial.com](mailto:Beau@BlackLabelCommercial.com)

**Hunter Spielman**

[HSpielman@BlackLabelCommercial.com](mailto:HSpielman@BlackLabelCommercial.com)

**Ethan Hummel**

[Ethan@BlackLabelCommercial.com](mailto:Ethan@BlackLabelCommercial.com)

**Beau Harris / 936-523-0483 / 936-441-2610 / [Beau@BlackLabelCommercial.com](mailto:Beau@BlackLabelCommercial.com) - Hunter Spielman / 817-233-6663 / [HSpielman@BlackLabelCommercial.com](mailto:HSpielman@BlackLabelCommercial.com)**

## NORTHERN EDGE



## SOUTHERN EDGE



The Northern Edge (Left) Exits To Riley Fuzzel With Direct Access To The HTR & HWY 99. The Southern Edge (Right) Shows A 60' Easement Exiting To Aldine Westfield

Beau Harris / 936-523-0483 / 936-441-2610 / [Beau@BlackLabelCommercial.com](mailto:Beau@BlackLabelCommercial.com) - Hunter Spielman / 817-233-6663 / [HSpielman@BlackLabelCommercial.com](mailto:HSpielman@BlackLabelCommercial.com)

This information has been obtained from sources believed reliable. We have not verified it and make no guarantee, warranty or representation about it. Any projections, opinions, assumptions, or estimates used are for example only.



Beau Harris / 936-523-0483 / 936-441-2610 / [Beau@BlackLabelCommercial.com](mailto:Beau@BlackLabelCommercial.com) - Hunter Spielman / 817-233-6663 / [HSpielman@BlackLabelCommercial.com](mailto:HSpielman@BlackLabelCommercial.com)

This information has been obtained from sources believed reliable. We have not verified it and make no guarantee, warranty or representation about it. Any projections, opinions, assumptions, or estimates used are for example only.



**Desirably Located Just Southwest Of The Intersection Of The Hardy Toll Rd & The Grand Parkway With Frontage / Access To Both Riley Fuzzel & Aldine Westfield**

**Beau Harris / 936-523-0483 / 936-441-2610 / [Beau@BlackLabelCommercial.com](mailto:Beau@BlackLabelCommercial.com) - Hunter Spielman / 817-233-6663 / [HSpielman@BlackLabelCommercial.com](mailto:HSpielman@BlackLabelCommercial.com)**

This information has been obtained from sources believed reliable. We have not verified it and make no guarantee, warranty or representation about it. Any projections, opinions, assumptions, or estimates used are for example only.



## Information About Brokerage Services

*Texas law requires all real estate licensees to give the following information about brokerage services to prospective buyers, tenants, sellers and landlords.*

11/2/2015

**TYPES OF REAL ESTATE LICENSE HOLDERS:**

- **A BROKER** is responsible for all brokerage activities, including acts performed by sales agents sponsored by the broker.
- **A SALES AGENT** must be sponsored by a broker and works with clients on behalf of the broker.

**A BROKER'S MINIMUM DUTIES REQUIRED BY LAW (A client is the person or party that the broker represents):**

- Put the interests of the client above all others, including the broker's own interests;
- Inform the client of any material information about the property or transaction received by the broker;
- Answer the client's questions and present any offer to or counter-offer from the client; and
- Treat all parties to a real estate transaction honestly and fairly.

**A LICENSE HOLDER CAN REPRESENT A PARTY IN A REAL ESTATE TRANSACTION:**

**AS AGENT FOR OWNER (SELLER/LANDLORD):** The broker becomes the property owner's agent through an agreement with the owner, usually in a written listing to sell or property management agreement. An owner's agent must perform the broker's minimum duties above and must inform the owner of any material information about the property or transaction known by the agent, including information disclosed to the agent or subagent by the buyer or buyer's agent.

**AS AGENT FOR BUYER/TENANT:** The broker becomes the buyer/tenant's agent by agreeing to represent the buyer, usually through a written representation agreement. A buyer's agent must perform the broker's minimum duties above and must inform the buyer of any material information about the property or transaction known by the agent, including information disclosed to the agent by the seller or seller's agent.

**AS AGENT FOR BOTH - INTERMEDIARY:** To act as an intermediary between the parties the broker must first obtain the written agreement of each party to the transaction. The written agreement must state who will pay the broker and, in conspicuous bold or underlined print, set forth the broker's obligations as an intermediary. A broker who acts as an intermediary:

- Must treat all parties to the transaction impartially and fairly;
- May, with the parties' written consent, appoint a different license holder associated with the broker to each party (owner and buyer) to communicate with, provide opinions and advice to, and carry out the instructions of each party to the transaction.
- Must not, unless specifically authorized in writing to do so by the party, disclose:
  - o that the owner will accept a price less than the written asking price;
  - o that the buyer/tenant will pay a price greater than the price submitted in a written offer; and
  - o any confidential information or any other information that a party specifically instructs the broker in writing not to disclose, unless required to do so by law.

**AS SUBAGENT:** A license holder acts as a subagent when aiding a buyer in a transaction without an agreement to represent the buyer. A subagent can assist the buyer but does not represent the buyer and must place the interests of the owner first.

**TO AVOID DISPUTES, ALL AGREEMENTS BETWEEN YOU AND A BROKER SHOULD BE IN WRITING AND CLEARLY ESTABLISH:**

- The broker's duties and responsibilities to you, and your obligations under the representation agreement.
- Who will pay the broker for services provided to you, when payment will be made and how the payment will be calculated.

**LICENSE HOLDER CONTACT INFORMATION:** This notice is being provided for information purposes. It does not create an obligation for you to use the broker's services. Please acknowledge receipt of this notice below and retain a copy for your records.

<b>Black Label Commercial Group</b>	<b>501129</b>		
Licensed Broker /Broker Firm Name or Primary Assumed Business Name	License No.	Email	Phone
Designated Broker of Firm <b>Casey Butaud</b>	License No. <b>461484</b>		Phone
Licensed Supervisor of Sales Agent/ Associate	License No.	Email	Phone
<b>W. Hunter Spielman</b>	<b>743547</b>	<b>hspielman@blacklabelcommercial.com</b>	<b>817-233-6663</b>
Sales Agent/Associate's Name	License No.	Email	Phone

Buyer/Tenant/Seller/Landlord Initials \_\_\_\_\_ Date \_\_\_\_\_

Regulated by the Texas Real Estate Commission

Information available at [www.trec.texas.gov](http://www.trec.texas.gov)

TXR-2501

IABS 1-0 Date

Black Label Commercial Group, 1610 FM 1960 Houston Texas 77073  
Beau Harris

Phone: 936.523.0483 Fax: 281.292.6833

B.L.C.G. IBS

Produced with Lone Wolf Transactions (zipForm Edition) 231 Shearson Cr. Cambridge, Ontario, Canada N1T 1J5 [www.lwolf.com](http://www.lwolf.com)