

New Listing

Maps and additional information at [highlandranches.com](http://highlandranches.com)

# Emery County Mountain Land

515.37 acres in Emery County, Utah



## EXECUTIVE SUMMARY:

List Price: \$385,000 \$750/acre

Joe Nelson • [joe@hciutah.com](mailto:joe@hciutah.com)

801-482-7560 • 801-487-6100

Mike Nelson | Gary Nelson

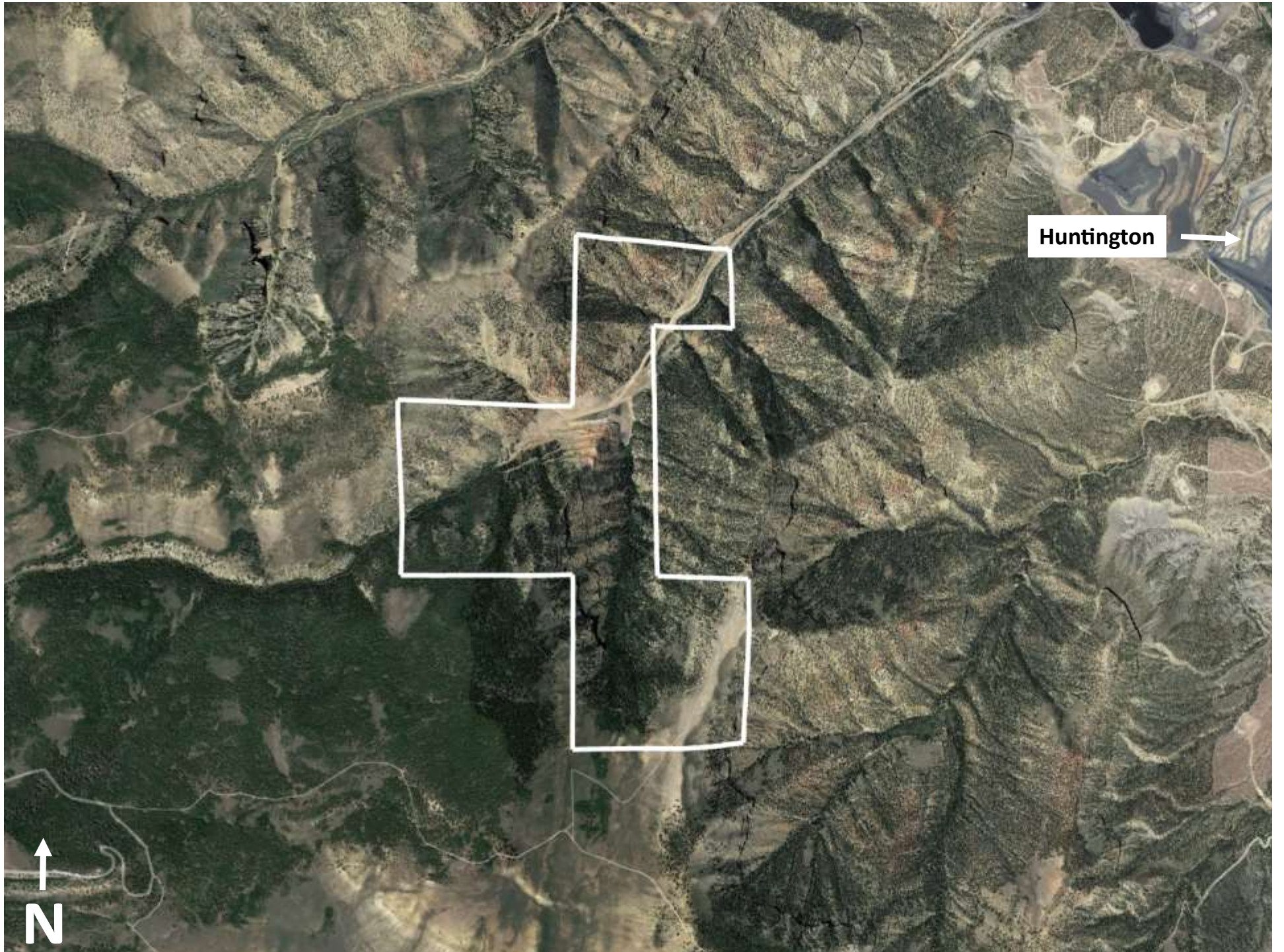
Notice: This information is believed to be accurate, but no warranty is expressed or implied. Highland Commercial insists that interested parties conduct their own research and investigations. The property is offered subject to prior sale, price change, and withdrawal without notice. No obligations will be created unless a purchase contract is signed by both buyer and seller. We welcome the cooperation of participating brokers; please contact us for our commission-sharing policies. All images and materials are copyright protected and are the property of Highland Commercial.

- 515.37 acres in Emery County, Utah
- Located about seven miles west of Huntington up Deer Creek Road
- Mine remediation 'monitoring period' through ±2029
- Parcel #'s: 02-0049-0001 (L3-0018-0001, L3-0019-0001, L3-0020-0001, and L3-0020-0002)
- Zoned M-1 (Mountain)
- 2019 appraisal available upon request



Highland Commercial, Inc.  
2733 East Parley's Way, Suite 304  
Salt Lake City, UT 84109  
801-487-6100

[www.highlandranches.com](http://www.highlandranches.com)



Huntington



↑  
N