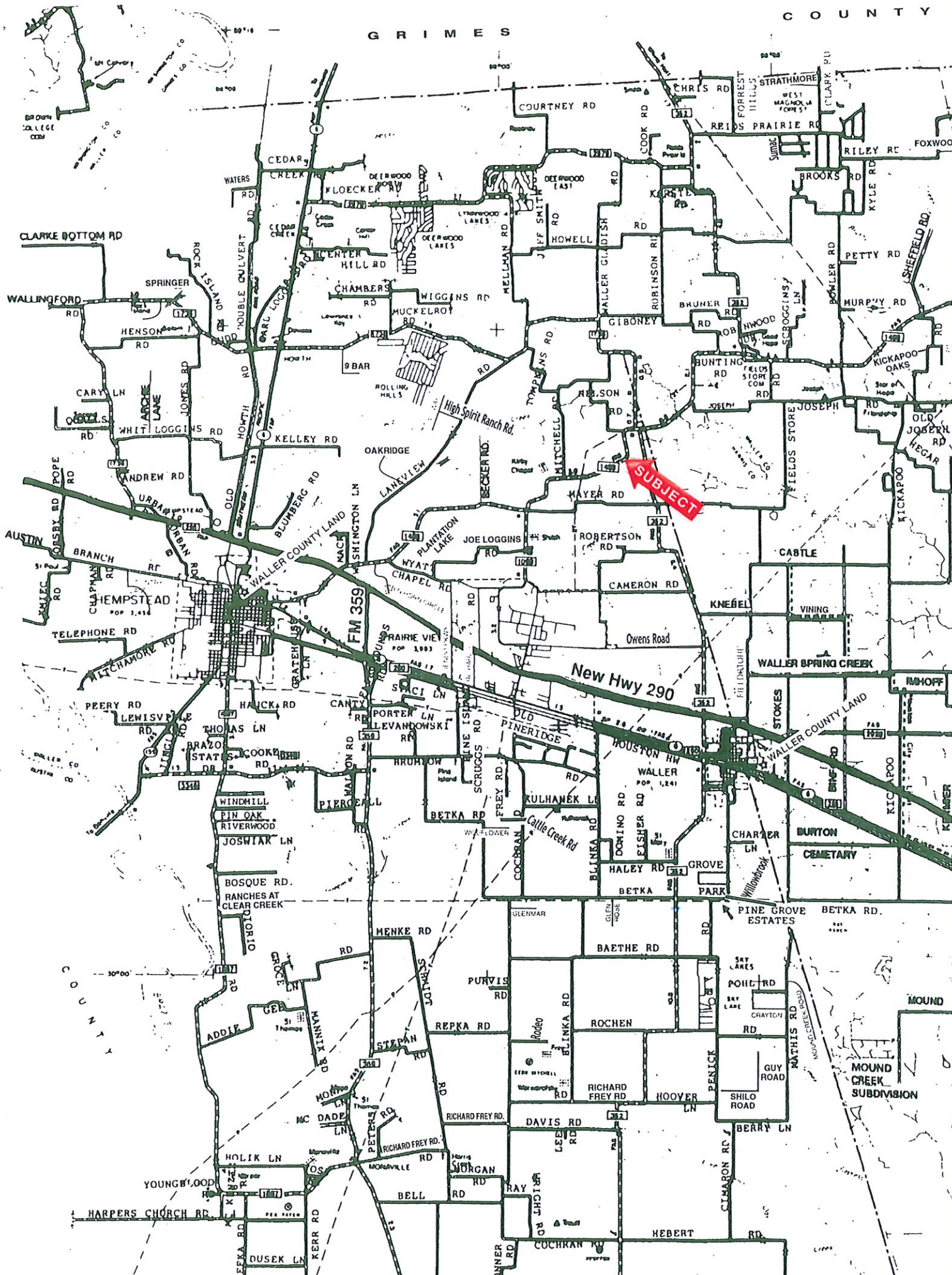


GRIMES

COUNTY



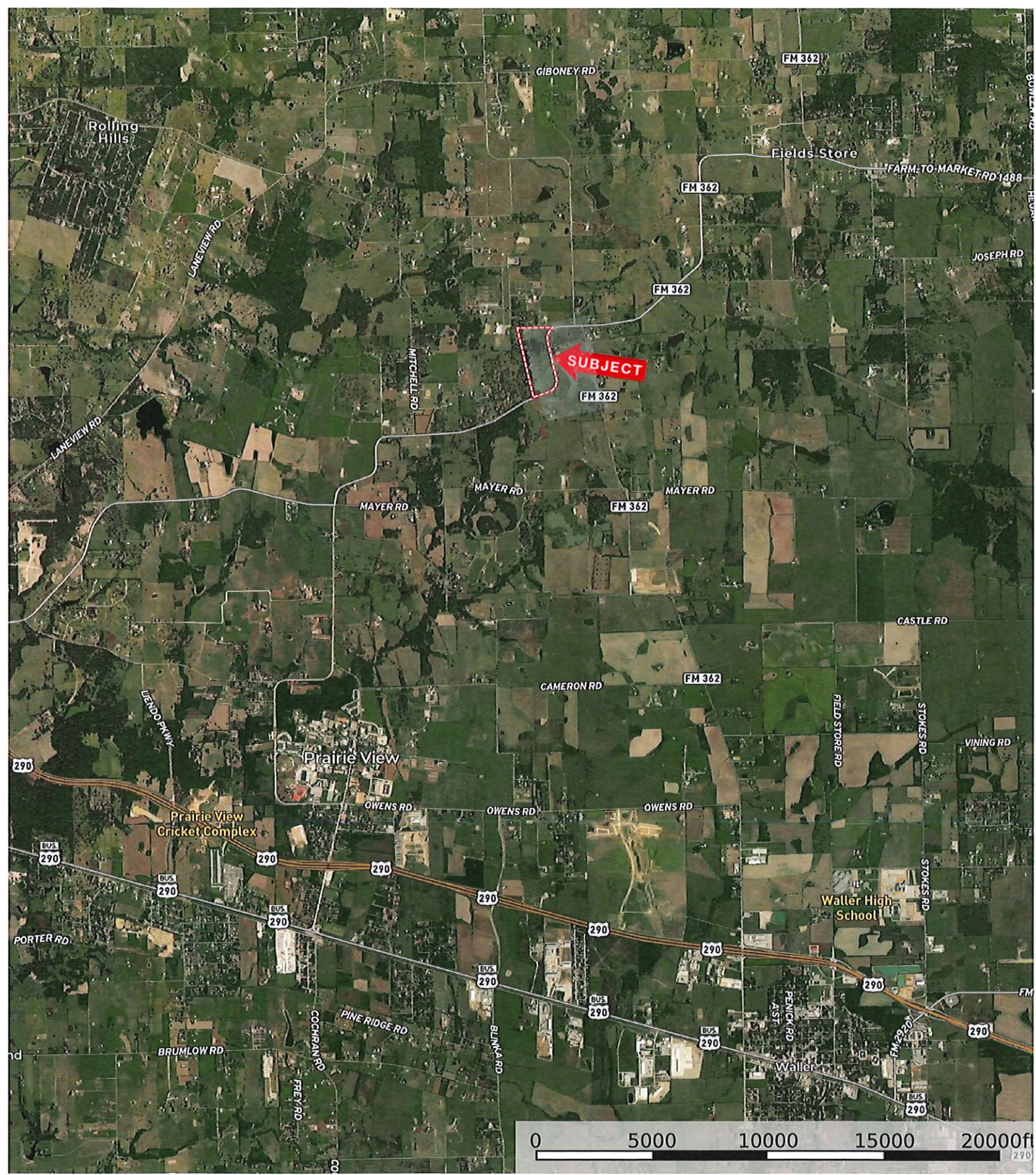
SUBJECT

New Hwy 290

FM 359

MOUND CREEK SUBDIVISION





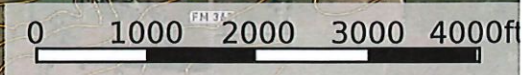
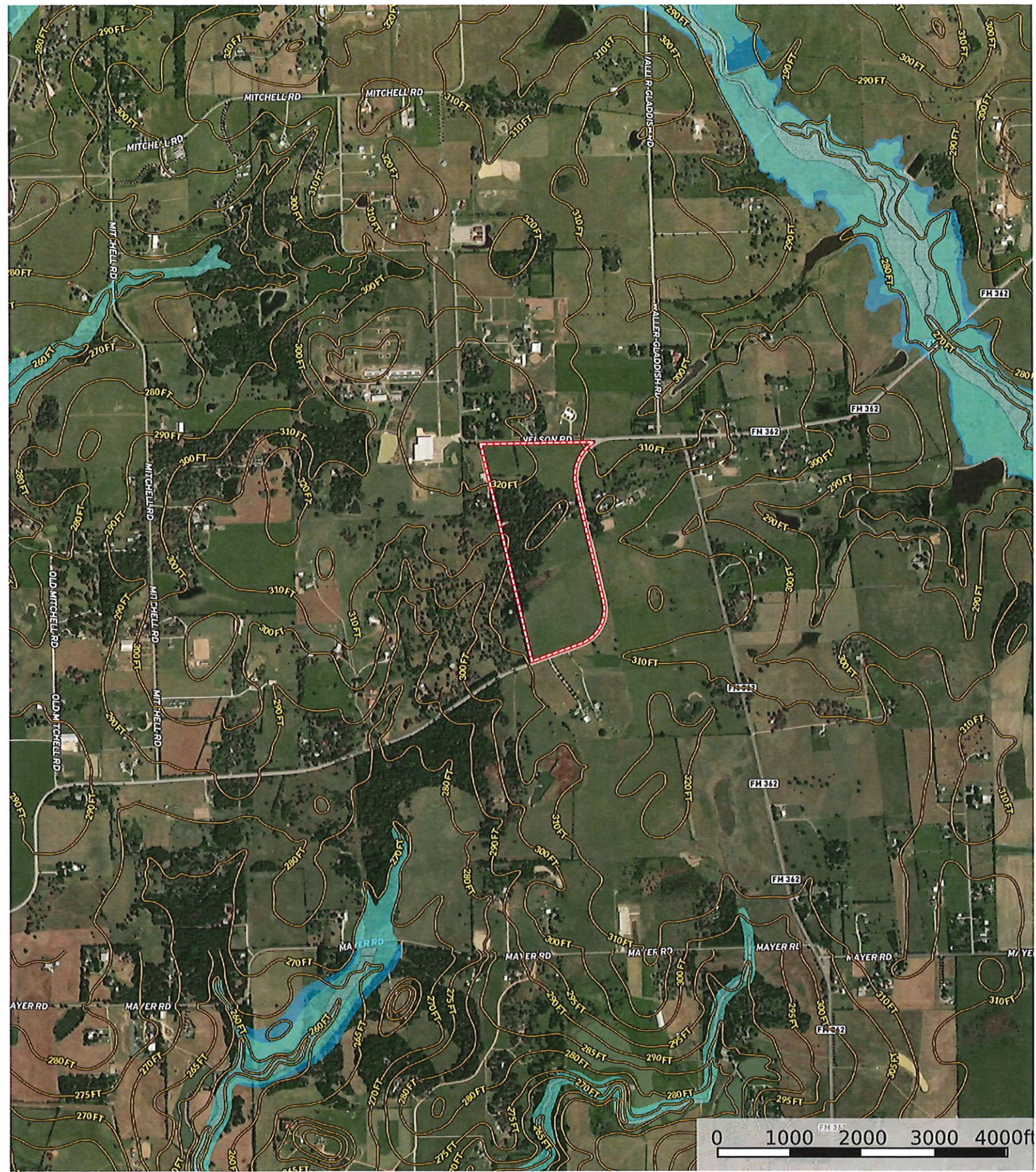
Boundary





Boundary





- - - - - Boundary
- 100 Year Floodplain
- 500 Year Floodplain
- Floodway
- Special
- Unmapped/ Not Included





- Boundary
- Voltage Unavailable
- Voltage 0 - 99 KV
- Voltage 100 - 161 KV
- Voltage 220 - 287 KV
- Voltage 345 KV
- Voltage 500 KV
- Voltage 735 KV+