



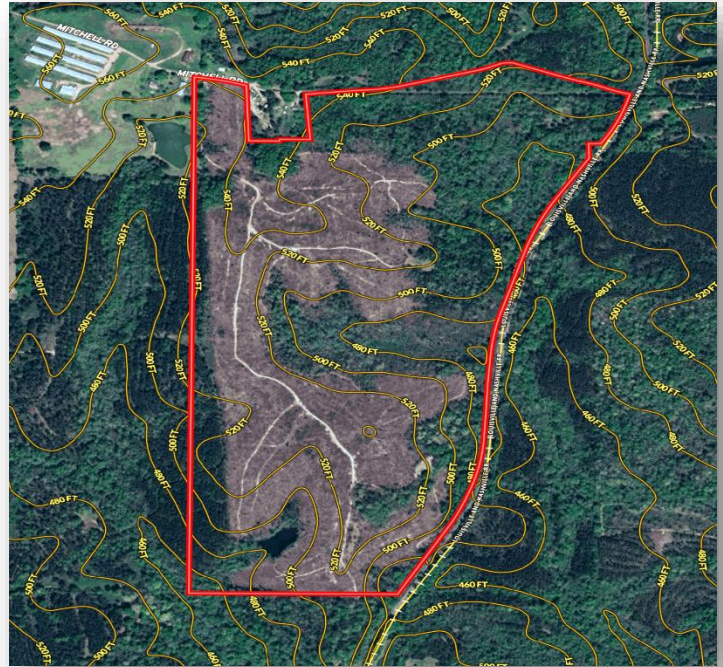
JOHN HALL & COMPANY

LAND • COMMERCIAL • INVESTMENT PROPERTY

WWW.JOHNHALLCO.COM

Porterfield Farms

213 acres +/-
Butler County



LOCATION: Butler County – 3.75 miles from Greenville – 1.85 miles from Ft Deposit – 7 miles from Robert Trent Jones Cambrian Ridge golf course – Access from Mitchell Rd

TERRAIN: Beautiful rolling terrain from 480 ft to 540 ft. About 100 acres of pines were clear cut last year with the remainder in old growth Hardwoods adding substantial timber value. Come in and design your ideal hunting plantation! Loaded with deer and turkey with several small wood duck holes, several locations suitable to plant a dove field, a well-maintained internal road system, and a small pond.

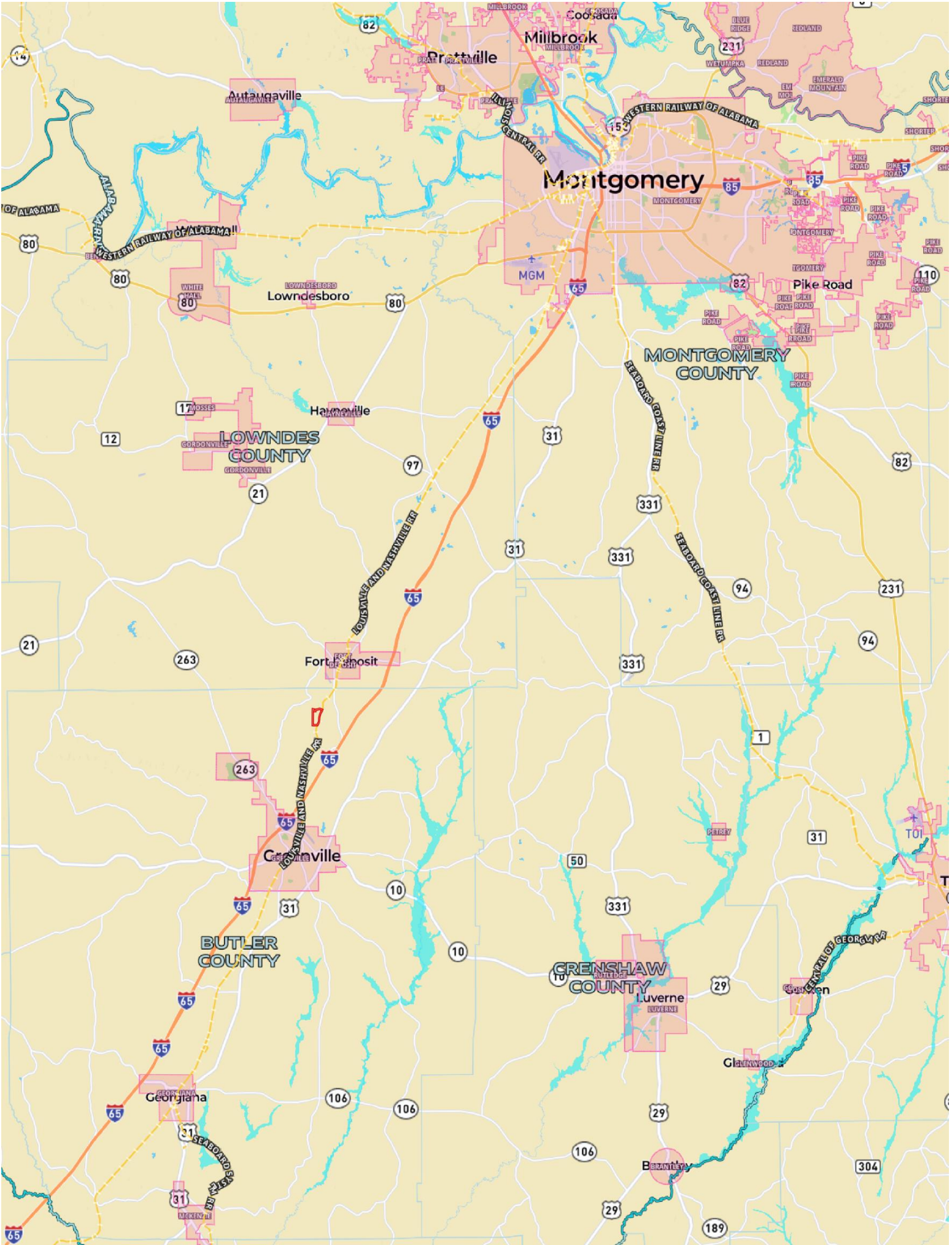
LAND USE: Recreational deer, turkey, duck and dove – Timber Investment – Option to replant in pines or make large fields for hay or other agriculture. There are several large lake sites on property.

PRICE: \$575,000 or \$2700 per acre

Call Pete Hall at (334) 312 7099 to view the property

This company, or any of its agents, will not be held responsible for any false or misleading information. Information is collected by agents from sources that agent deems reliable. Agent has used his best efforts and good faith to obtain reliable information.

4163 CARMICHAEL ROAD | MONTGOMERY, ALABAMA 36106 | 334.270.8400
www.JohnHallCo.com



Montgomery

Lowndesboro

LOWNDES COUNTY

MONTGOMERY COUNTY

BUTLER COUNTY

CRENSHAW COUNTY

Fort Deposit

Greenville

Luverne

Georgiana

Glennwood

Brandley

MGM

21

12

17

21

97

31

31

331

94

94

231

263

263

65

10

10

50

331

31

65

65

106

106

106

29

189

304

14

80

80

80

Hayneville

97

65

31

31

331

94

94

231

263

263

65

10

10

50

331

31

65

65

106

106

106

29

189

304

14

80

80

80

Hayneville

97

65

31

31

331

94

94

231

263

263

65

10

10

50

331

31

65

65

106

106

106

29

189

304

14

80

80

80

Hayneville

97

65

31

31

331

94

94

231

263

263

65

10

10

50

331

31

65

65

106

106

106

29

189

304

14

80

80

80

Hayneville

97

65

31

31

331

94

94

231

263

263

65

10

10

50

331

31

65

65

106

106

106

29

189

304

14

80

80

80

Hayneville

97

65

31

31

331

94

94

231

263

263

65

10

10

50

331

31

65

65

106

106

106

29

189

304

14

80

80

80

Hayneville

97

65

31

31

331

94

94

231

263

263

65

10

10

50

331

31

65

65

106

106

106

29

189

304

14

80

80

80

Hayneville

97

65

31

31

331

94

94

231

263

263

65

10

10

50

331

31

65

65

106

106

106

29

189

304

14

80

80

80

Hayneville

97

65

31

31

331

94

94

231

263

263

65

10

10

50

331

31

65

65

106

106

106

29

189

304

14

80

80

80

Hayneville

97

65

31

31

331

94

94

231

263

263

65

10

10

50

331

31

65

65

106

106

106

29

189

304

14

80

80

80

Hayneville

97

65

31

31

331

94

94

231

263

263

65

10

10

50

331

31

65

65

106

106

106

29

189

304

14

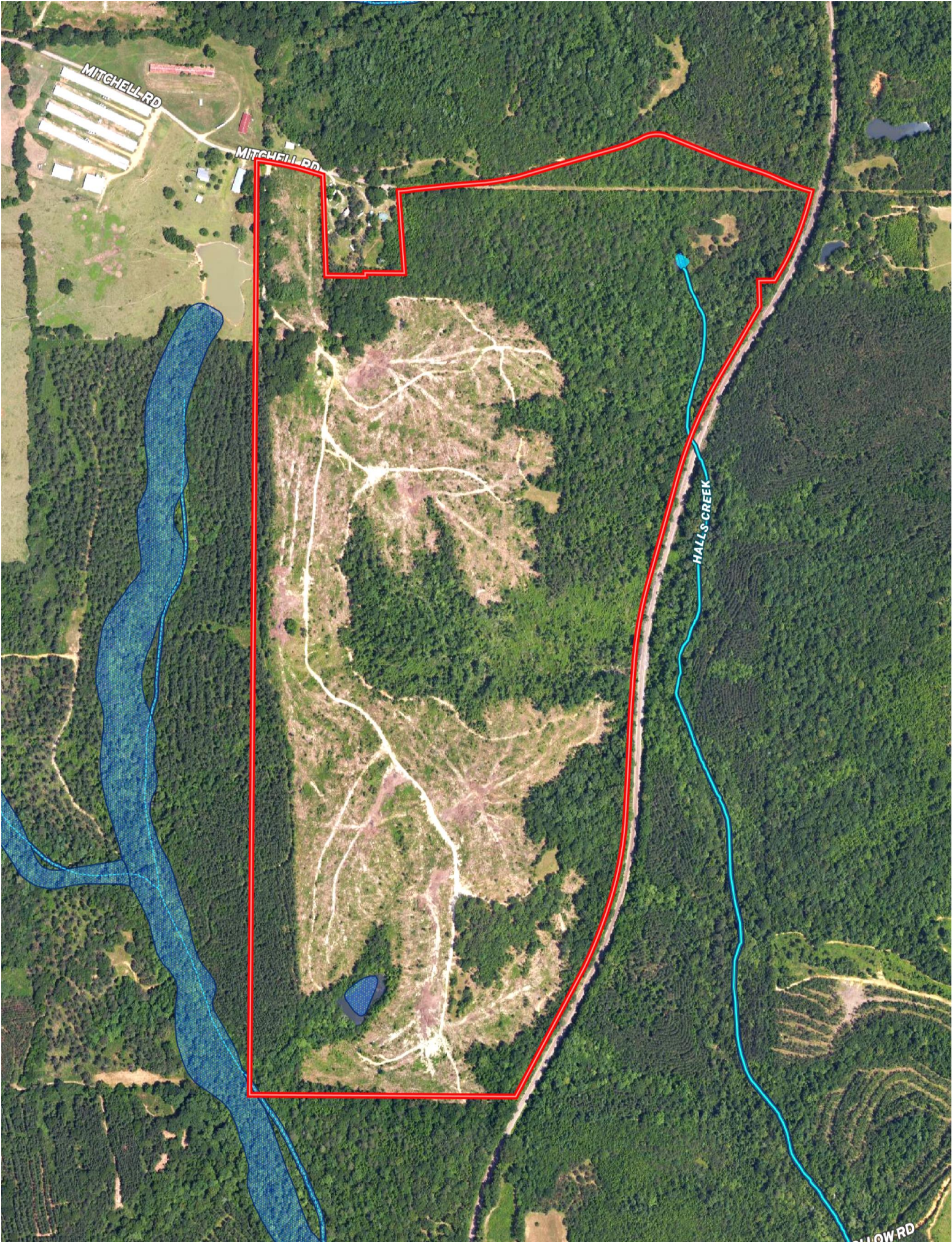
80

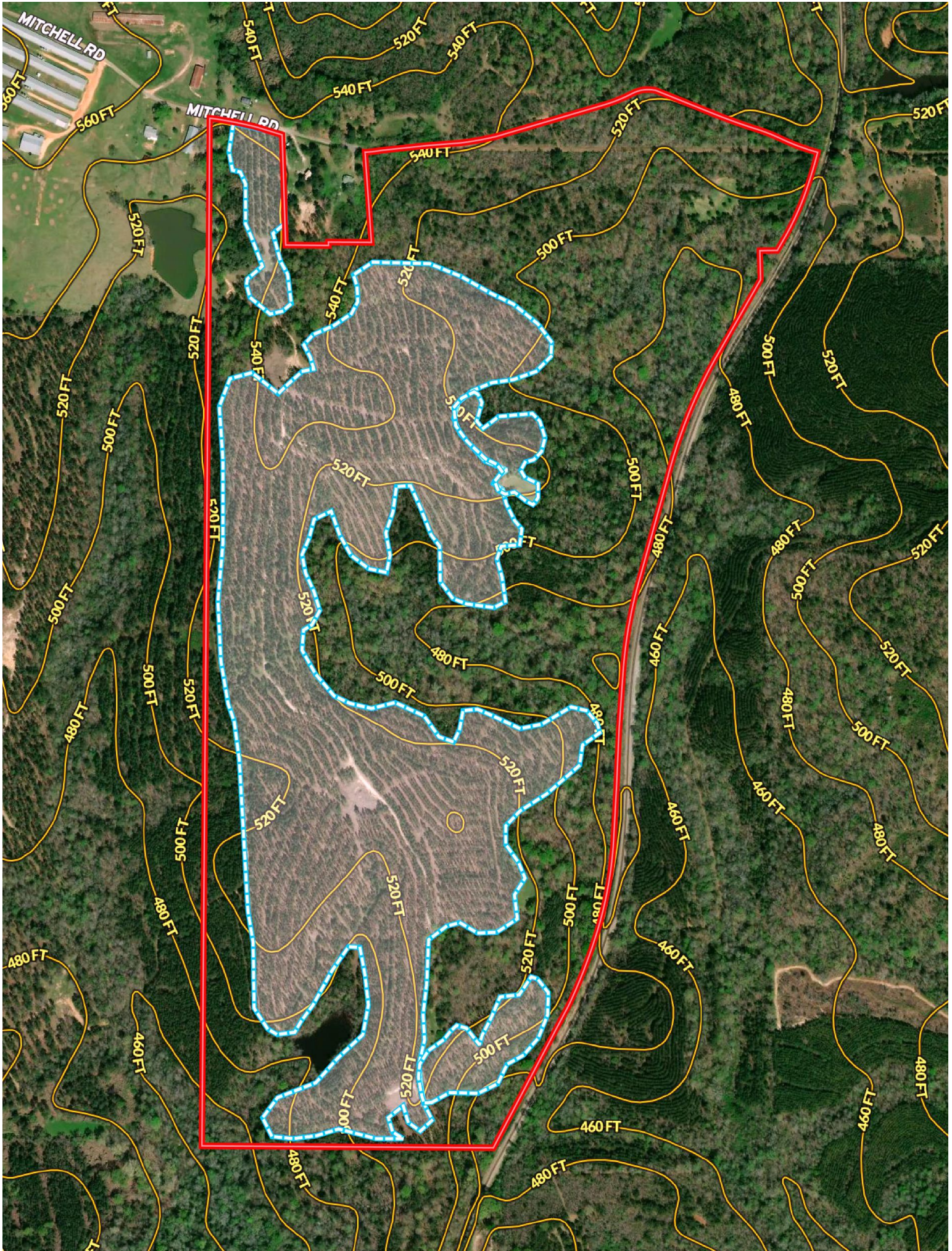
80

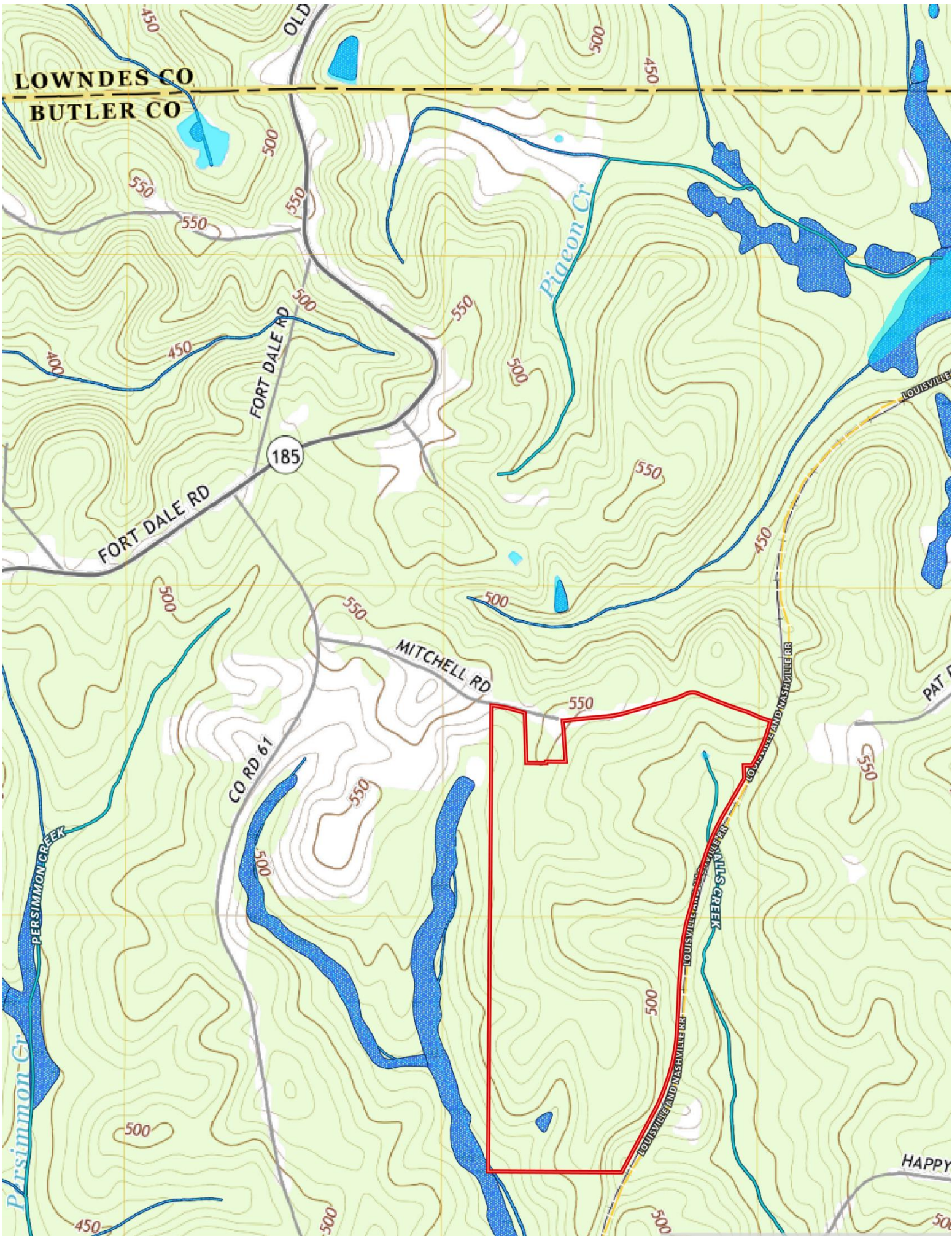
80

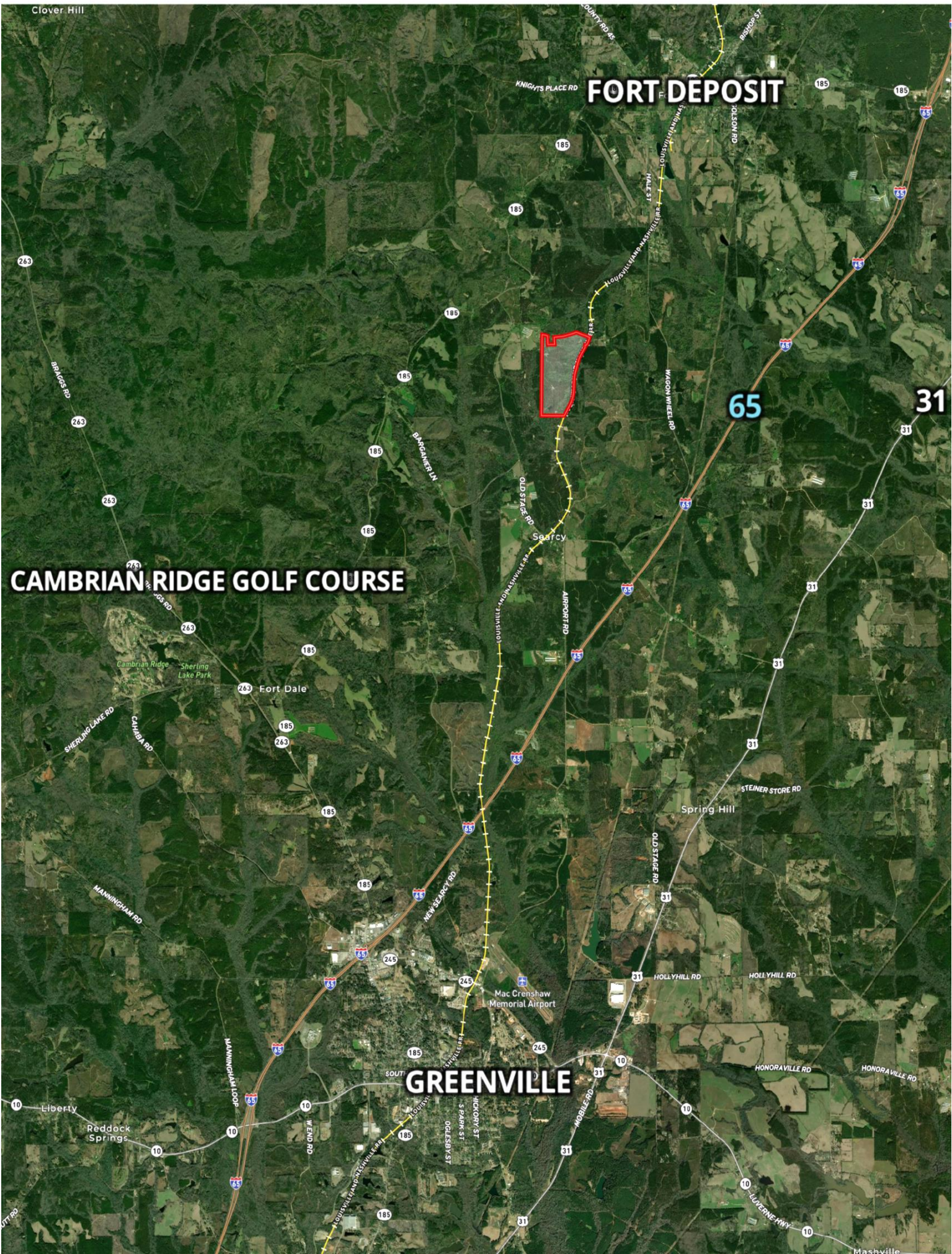
Hayneville

97









FORT DEPOSIT

CAMBRIAN RIDGE GOLF COURSE

GREENVILLE



65

31

Clover Hill

263

263

263

263

10

10

185

185

185

185

185

185

185

185

185

185

185

185

185

185

185

185

185

185

185

185

185

185

185

185

185

185

185

185

185

185

185

185

185

185

185

185

185

185

185

185

185

185

185

185

185

185

185

185

185

185

185

185

185

185

185

185

185

185

185

185

185

185

185

185

185

185

185

185

185

185

185

185

185

185

185

185

185

185

185

185

185

185

185

185

185

185

185

185

185

185

185

185

185

185

185

185

185

185

185

185

185

185

185

185

185

185

185

185

185

185

185

185

185

185

185

185

185

185

185

185

185

185

185

185

185

185

185

185

185

185

185

185

185

185

185

185

185

185

185

185

185

185

185

185

185

185

185

185

185

185

185

185

185

185

185

185

185

185

185

185

185

185

185

185

185

185

185

185

185

185

185

185

185

185

185

185

185

185

185

185

185

185

185

185

185

185

185

185

185

185

185

185

185

185

185

185

185

185

185

185

185

185

185

185

185

185

185

185

185

185

185

185

185

185

185

185

185

185

185

185

185

185

185

185

185

185

185

185

185

185

185

185

185

185

185

185

185

185

185

185

185

185

185

185

185

185

185

185

185

185

185

185

185

185

185

185

185

185

185

185

185

185

185

185

185

185

185

185

185

185

185

185

185

185

185

185

185

185

185

185

185

185

185

185

185

185

185

185

185

185

185

185

185

185

185

185

185

185

185

185

185

185

185

185

185

185

185

185

185

185

185

185

185

185

185

185

185

185</

