



DRAINFIELD TIES

a	N76°31'47"W	60.17'
b	N88°22'10"W	40.61'
c	N65°14'35"W	88.21'
d	N71°44'30"W	88.21'
e	N63°43'51"W	60.24'
f	N55°07'31"W	11.33'
g	N77°46'57"E	30.30'
h	N23°16'46"E	20.59'
i	N26°50'47"E	76.30'
j	N88°14'02"E	60.00'
k	N82°31'16"E	265.33'

TMB9-A-34  
William Scott Estate  
D.B.34 p.265

10' Strip along entire frontage hereby dedicated to VDOT for Public Use  
15' previously dedicated by plat recorded in Slide B24#1

State Route No. 604  
Abilene Rd.  
30'R/W

State Route No. 631  
Slaydon Rd.  
30'R/W

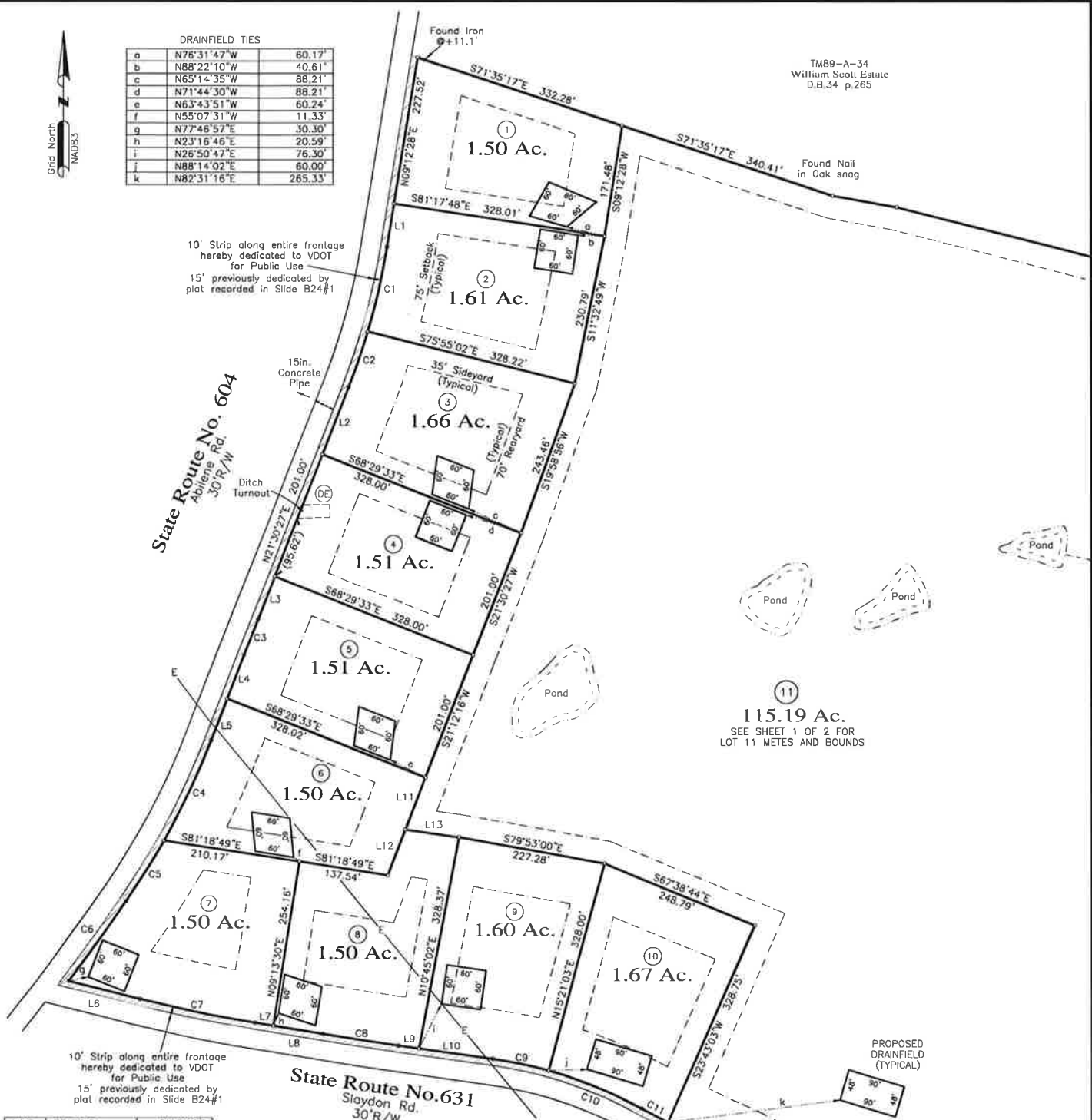
10' Strip along entire frontage hereby dedicated to VDOT for Public Use  
15' previously dedicated by plat recorded in Slide B24#1

LINE	BEARING	DISTANCE
L1	N09°12'28"E	67.36'
L2	N21°30'27"E	110.30'
L3	N21°30'27"E	70.22'
L4	N20°54'58"E	71.90'
L5	N20°54'58"E	68.12'
L6	N75°58'23"W	112.66'
L7	N80°46'30"W	28.23'
L8	N80°46'30"W	77.92'
L9	N81°57'12"W	32.29'
L10	N81°57'12"W	114.01'
L11	S21°00'54"W	85.66'
L12	S21°18'44"W	74.73'
L13	S81°52'24"E	83.09'

Legend:  
 -E- = Overhead Electric Line(s)  
 o = Iron pin set at property corner unless otherwise described  
 (DE) = 20'x50' Drainage Easement dedicated

TABLES SHOWN ON THIS SHEET APPLY TO THIS SHEET ONLY

CURVE	RADIUS	ARC LENGTH	CHORD LENGTH	CHORD BEARING	DELTA ANGLE
C1	1041.59'	132.82'	132.73'	N12°51'40"E	7°18'23"
C2	1041.59'	90.78'	90.75'	N19°00'39"E	4°59'36"
C3	5704.58'	58.88'	58.88'	N21°12'43"E	0°35'29"
C4	1154.55'	169.93'	169.78'	N25°07'57"E	8°25'58"
C5	1154.55'	109.42'	109.38'	N32°03'51"E	5°25'49"
C6	4868.90'	150.15'	150.15'	N35°39'46"E	1°46'01"
C7	2137.85'	179.17'	179.12'	N78°22'26"W	4°48'07"
C8	5704.58'	117.32'	117.32'	N81°21'51"W	1°10'42"
C9	683.63'	87.15'	87.09'	N78°18'04"W	7°18'15"
C10	683.63'	155.96'	155.82'	N68°06'49"W	13°04'15"
C11	2355.00'	45.57'	45.57'	N62°07'58"W	1°06'32"



Sheet 2 of 2  
Survey of

Mingo Creek Subdivision

Hampden District, Prince Edward County, Virginia  
 May 4, 2021  
 Scale: 1 in. = 100 ft.



**Maxe & Associates, P.C.**  
 Land Surveyors • Engineers • Planners • Consultants  
 P.O. Box 90 • Farmville • Virginia • 23901 • Tel: 434-392-8827

2150027  
 FB1239-10