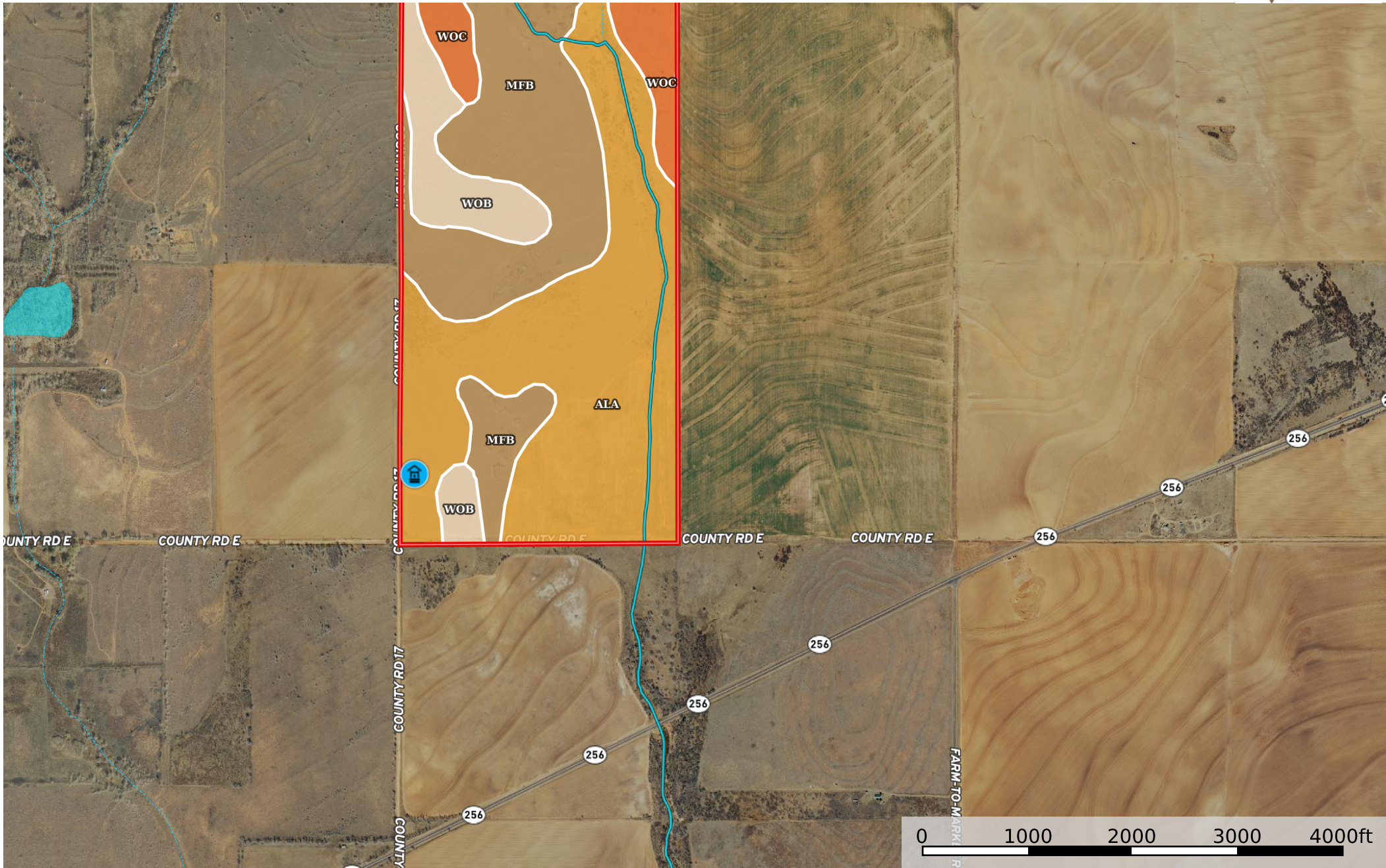


Spring Creek 320 Ac, Memphis, TX 79245

Texas, AC +/-



- Well
- Boundary
- Stream, Intermittent
- River/Creek
- Water Body
- Water Wells

|  Boundary 320.66 ac

SOIL CODE	SOIL DESCRIPTION	ACRES	%	CPI	NCCPI	CAP
AIA	Altus fine sandy loam, dry, 0 to 1 percent slopes	158.45	49.42	0	52	2e
MfB	Miles fine sandy loam, 1 to 3 percent slopes	102.53	31.98	0	48	3e
WoB	Woodward loam, 1 to 3 percent slopes, warm	33.97	10.59	0	36	3e
WoC	Woodward loam, 3 to 5 percent slopes, warm	25.71	8.02	0	31	3e
TOTALS		320.66(*)	100%	-	47.34	2.51

(*) Total acres may differ in the second decimal compared to the sum of each acreage soil. This is due to a round error because we only show the acres of each soil with two decimal.

Capability Legend

Increased Limitations and Hazards

Decreased Adaptability and Freedom of Choice Users

Land, Capability

	1	2	3	4	5	6	7	8
'Wild Life'	•	•	•	•	•	•	•	•
Forestry	•	•	•	•	•	•	•	
Limited	•	•	•	•	•	•	•	
Moderate	•	•	•	•	•	•		
Intense	•	•	•	•	•			
Limited	•	•	•	•				
Moderate	•	•	•					
Intense	•	•						
Very Intense	•							

Grazing Cultivation

(c) climatic limitations (e) susceptibility to erosion

(s) soil limitations within the rooting zone (w) excess of water