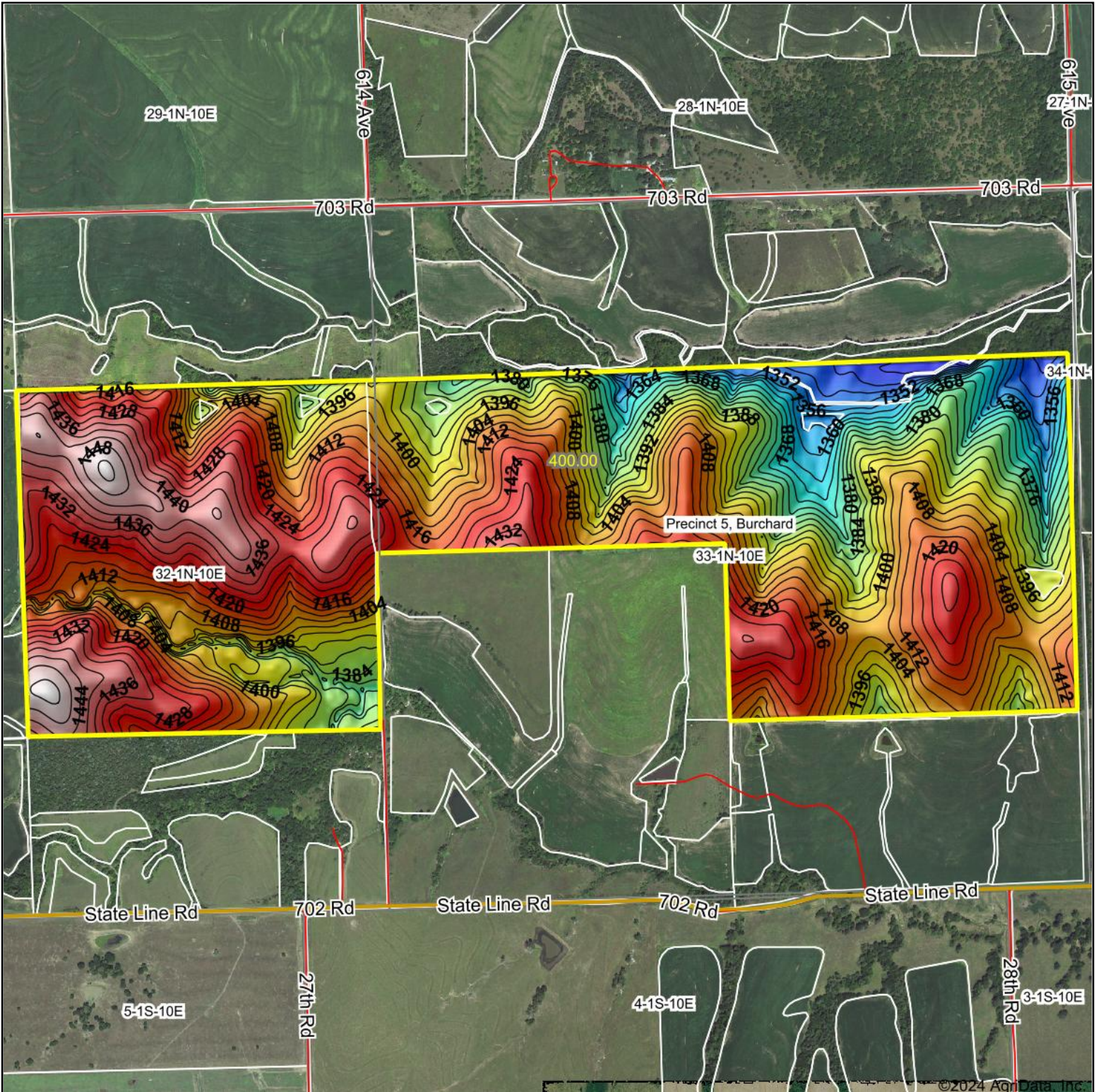

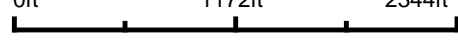



Topography Hillshade



<p>Low Elevation High</p> 	<p>Source: USGS 10 meter dem</p> <p>Interval(ft): 4</p> <p>Min: 1,337.0</p> <p>Max: 1,453.9</p> <p>Range: 116.9</p> <p>Average: 1,405.9</p> <p>Standard Deviation: 23.59 ft</p>	<p>0ft 1172ft 2344ft</p>  <p>  6/18/2024 33-1N-10E Pawnee County Nebraska Boundary Center: 40° 0' 29.52, -96° 18' 28.89 </p>
--	---	--