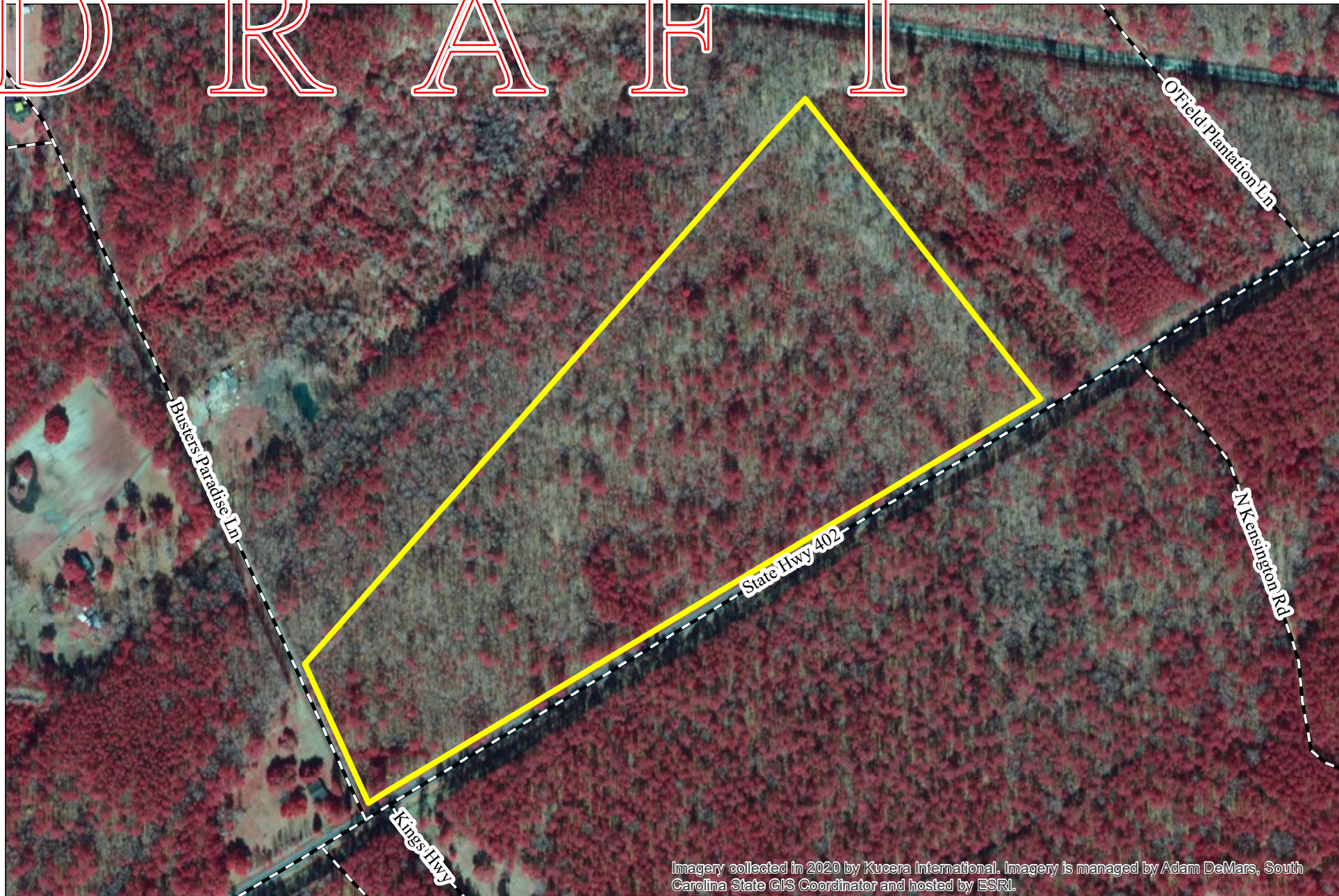


DRAFT



Imagery collected in 2020 by Kucera International. Imagery is managed by Adam DeMars, South Carolina State GIS Coordinator and hosted by ESRI.

EXTERNAL SOURCES: 2017 LIDAR IMAGERY, U.S. CENSUS ROADS, BERKELEY COUNTY GIS PARCEL

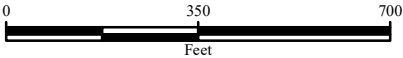
Created By: Stephen Bennett
 Date Created: January 25, 2024
 Copyright 2024 Sabine & Waters, Inc.
 R:\custdata\ms setup\add other properties\ southard_properties\master.mxd

Sabine & Waters, Inc.
 Environmental Land Management Consultants
 P.O. Box 1072 Summerville, SC 29484
 843.871.5383 (phone) 843.871.2050 (fax)
<http://www.sabine.net>

Disclaimer: This map is a graphic representation of data obtained from various sources. All efforts have been made to warrant the accuracy of this map. However, Sabine & Waters, Inc. disclaims all responsibility and liability for the use of this map.

REVISED: 1/25/2024

INFRARED SITE MAP SOUTHARD PROPERTIES THREE TRACT BERKELEY COUNTY, SC



LEGEND

PROPERTY BOUNDARY: +/- 36 AC

ROADS

Long: -79.834856 W
 Lat: 33.130032 N