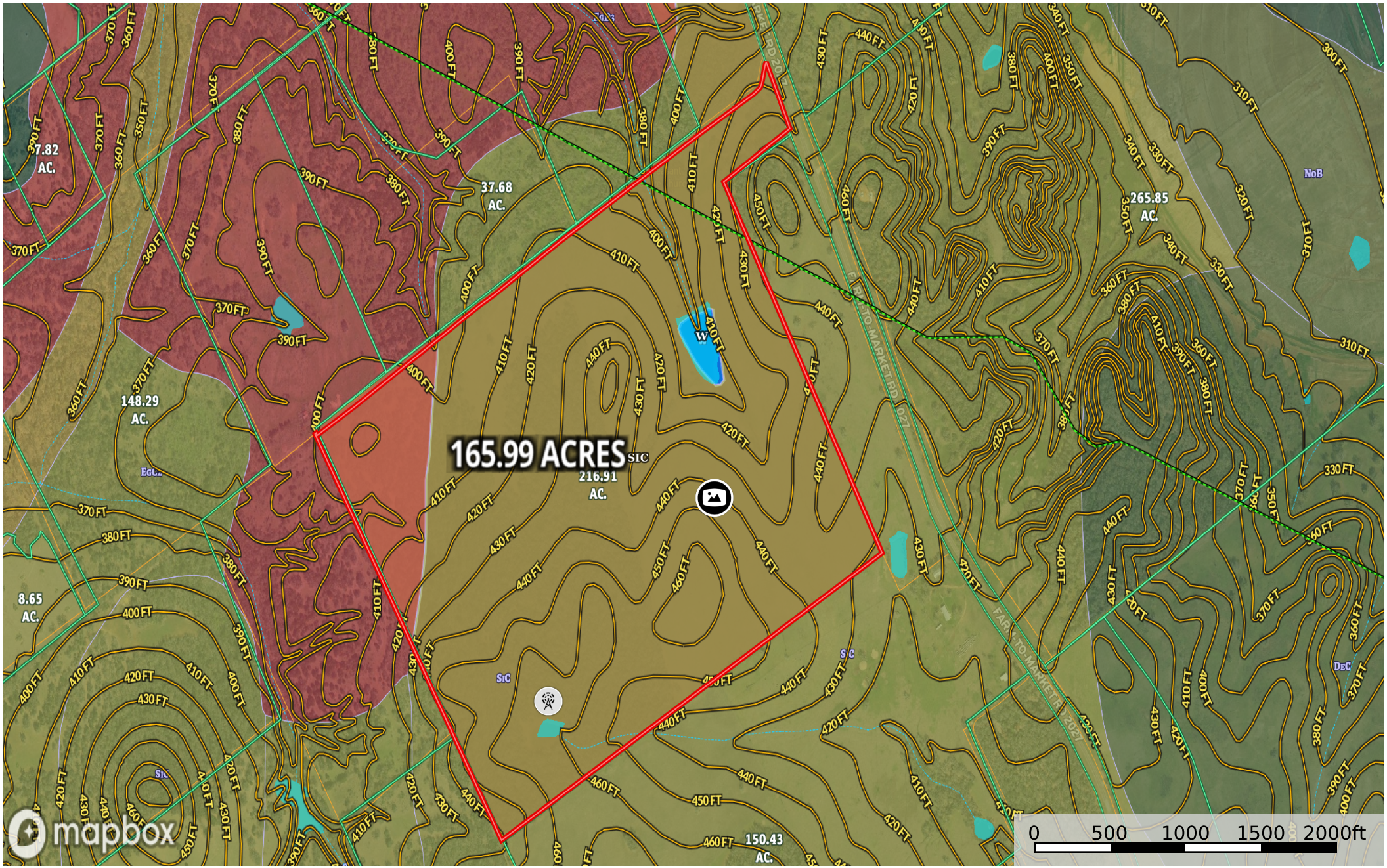


**Marcus 165.99 acres**  
 Milam County, Texas, 165.99 AC +/-



Windmill	Panoramic View	Boundary	Stream, Intermittent	River/Creek	Water Body	Voltage Unavailable	Voltage 0 - 99 KV	Voltage 100 - 161 KV	Voltage 220 - 287 KV	Voltage 345 KV	Voltage 500 KV	Voltage 735 KV+	Crude Oil
Natural Gas	Other												



|  Boundary 217.06 ac

SOIL CODE	SOIL DESCRIPTION	ACRES	%	CPI	NCCPI	CAP
SiC	Silawa loamy fine sand, 3 to 8 percent slopes	166.3 1	76.62	0	42	4e
EgC2	Edge fine sandy loam, 2 to 5 percent slopes, moderately eroded	24.92	11.48	0	56	4e
EgD3	Edge-Gullied land complex, 2 to 8 percent slopes, eroded	22.78	10.49	0	5	6e
UhA	Uhland loam, 0 to 1 percent slopes, frequently flooded	1.56	0.72	0	48	5w
W	Water	1.49	0.69	0	-	8
TOTALS		217.0 6(*)	100%	-	39.48	4.24

(\*) Total acres may differ in the second decimal compared to the sum of each acreage soil. This is due to a round error because we only show the acres of each soil with two decimal.

### Capability Legend

Increased Limitations and Hazards  
Decreased Adaptability and Freedom of Choice Users

Land, Capability

	1	2	3	4	5	6	7	8
'Wild Life'	•	•	•	•	•	•	•	•
Forestry	•	•	•	•	•	•	•	
Limited	•	•	•	•	•	•	•	
Moderate	•	•	•	•	•	•		
Intense	•	•	•	•	•			
Limited	•	•	•	•				
Moderate	•	•	•					
Intense	•	•						
Very Intense	•							

**Grazing Cultivation**

(c) climatic limitations (e) susceptibility to erosion  
(s) soil limitations within the rooting zone (w) excess of water