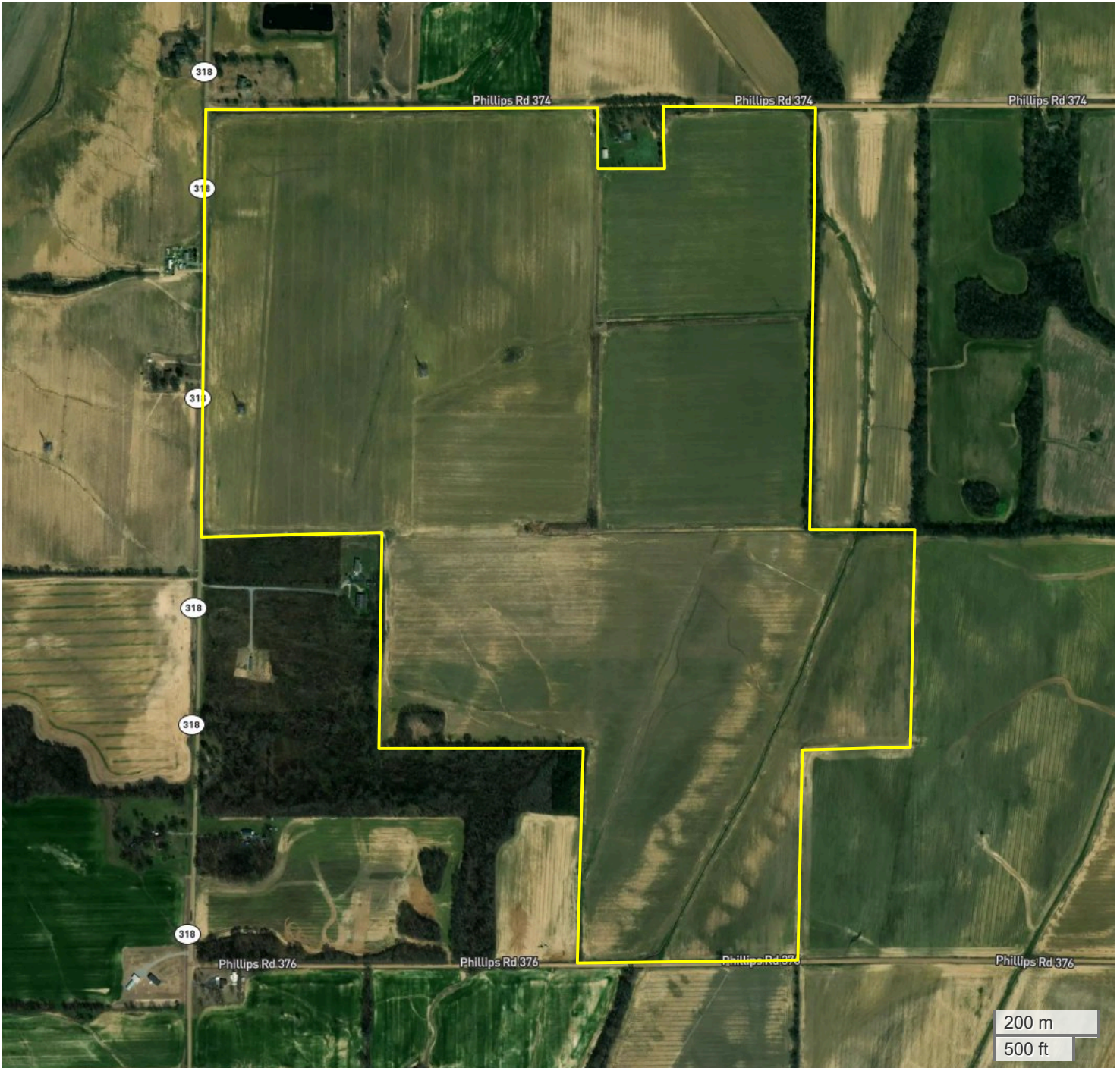




CENTRAL FARM (364.02 AC TOTAL, 0 AC TILLABLE)

# AERIAL MAP



Center: 34.446144, -90.940924

07-3S-2E

Big Creek Township

Phillips County, AR

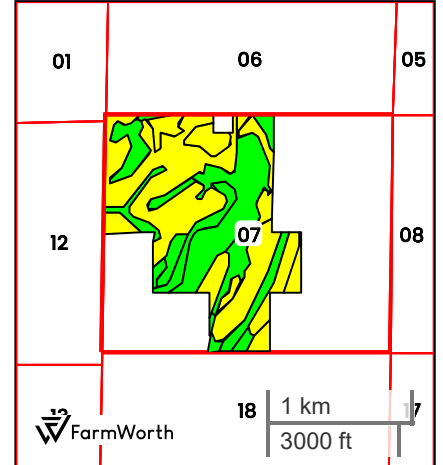
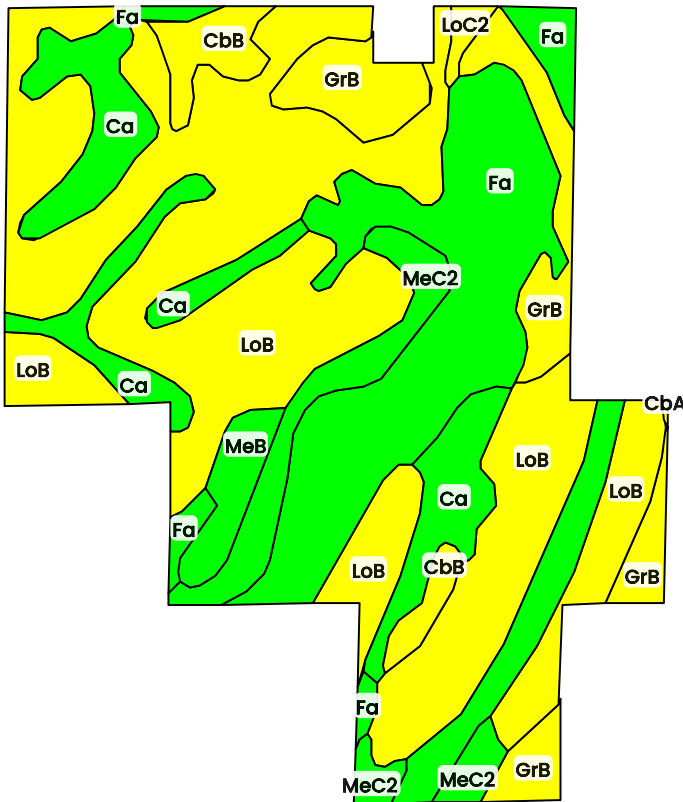


FarmWorth, LLC makes no representations or warranties, express or implied, as to the accuracy of any information, data, numerical values, boundaries, or any other information generated through the use of FarmWorth.com. User is solely responsible for independently investigating and determining all information provided through FarmWorth.com prior to use and waives any and all claims against FarmWorth, LLC for any inaccuracies or inconsistencies in the information and/or data.



CENTRAL FARM (364.02 AC TOTAL, 0 AC TILLABLE)

# TOTAL SOILS



County: Phillips County, AR  
 Location: 07-3S-2E  
 Township: Big Creek  
 Acres: 364.02  
 Date: 06/21/2024



Field borders obtained from Farm Service Agency as of 2008

FarmWorth, LLC makes no representations or warranties, express or implied, as to the accuracy of any information, data, numerical values, boundaries, or any other information generated through the use of FarmWorth.com. User is solely responsible for independently investigating and determining all information provided through FarmWorth.com prior to use and waives any and all claims against FarmWorth, LLC for any inaccuracies or inconsistencies in the information and/or data.



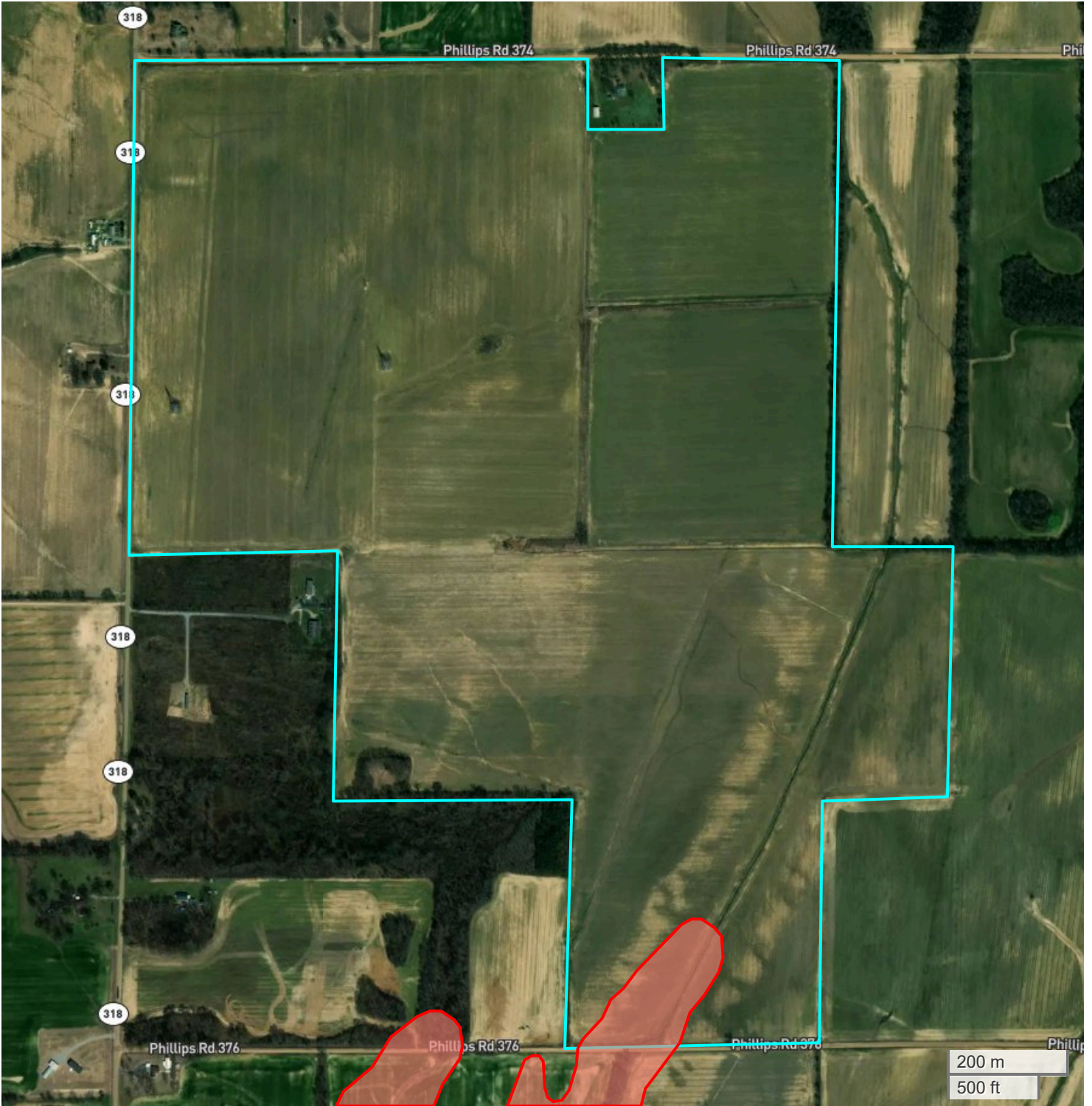
Code	Description	Acres	% of field	Overall NCCPI	Soil Class (Irr)	Soil Class (Non-Irr)	Drainage Class
LoB	Loring silt loam, 1 to 3 percent slopes, west	165.66	45.51 %	65	-	2	Moderately well drained
Fa	Falaya silt loam	85.51	23.49 %	76	-	2	Somewhat poorly drained
Ca	Calhoun silt loam	39.70	10.91 %	74	-	3	Poorly drained
GrB	Grenada silt loam, 1 to 3 percent slopes	32.13	8.83 %	62	-	2	Moderately well drained
MeC2	Memphis silt loam, 3 to 8 percent slopes, eroded	20.65	5.67 %	80	-	3	Well drained
CbB	Calloway silt loam, 1 to 3 percent slopes	10.74	2.95 %	56	-	2	Somewhat poorly drained
MeB	Memphis silt loam, 1 to 3 percent slopes	7.65	2.10 %	86	-	2	Well drained
LoC2	Loring silt loam, 3 to 8 percent slopes, eroded	1.84	0.51 %	52	-	3	Moderately well drained
CbA	Calloway silt loam, 0 to 1 percent slopes	0.11	0.03 %	58	-	2	Somewhat poorly drained
<b>Average:</b>				<b>69.3</b>			

Soils data provided by USDA and NRCS.





CENTRAL FARM (364.02 AC TOTAL, 0 AC TILLABLE)

# FLOOD HAZARDS



FarmWorth, LLC makes no representations or warranties, express or implied, as to the accuracy of any information, data, numerical values, boundaries, or any other information generated through the use of FarmWorth.com. User is solely responsible for independently investigating and determining all information provided through FarmWorth.com prior to use and waives any and all claims against FarmWorth, LLC for any inaccuracies or inconsistencies in the information and/or data.

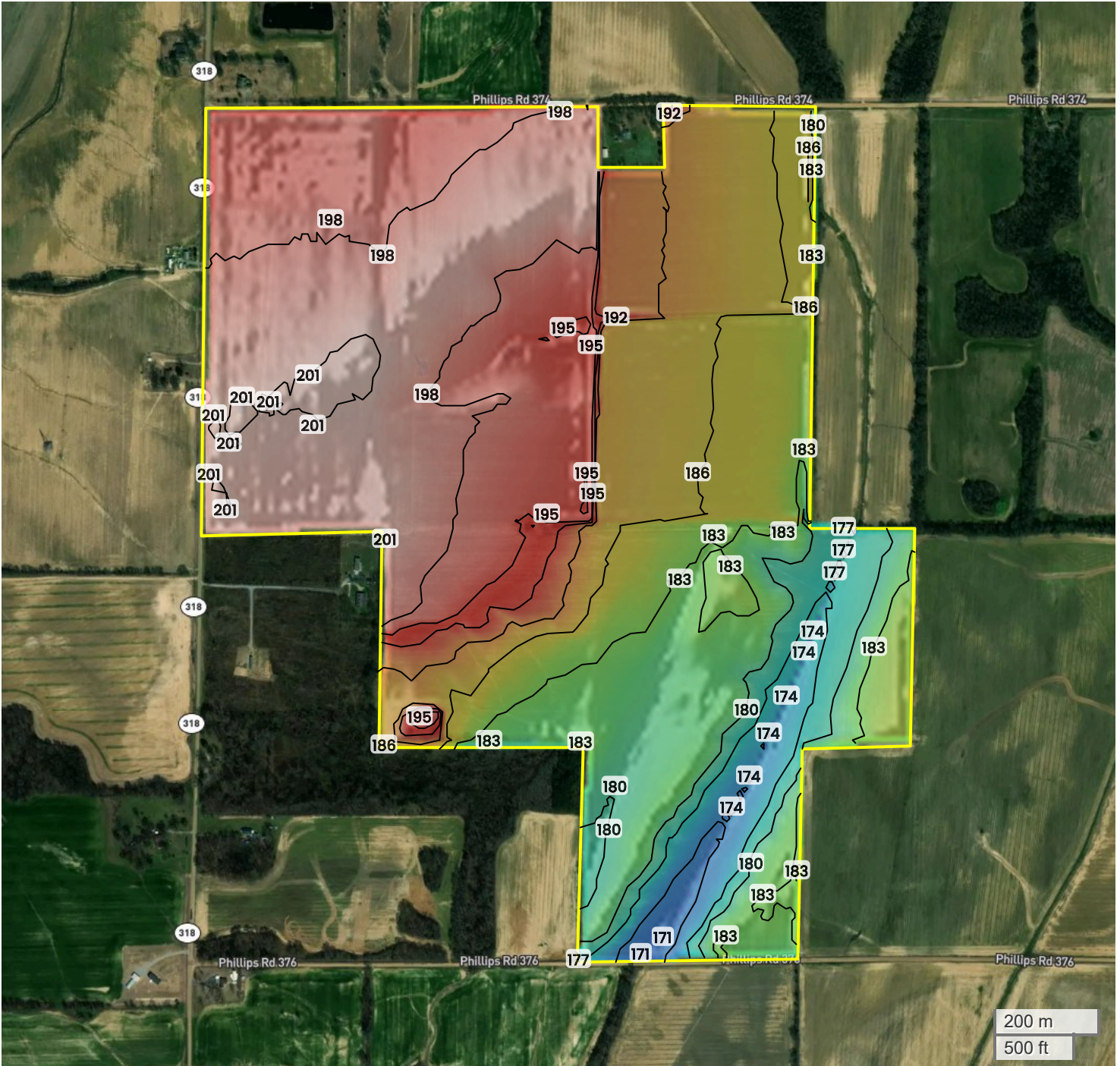
## Significant Flood Hazards

-  Regulatory Floodway (Zones AE, AO, AH, VE, AR)
-  Without Base Flood Elevation (BFE), with BFE or Depth (Zones A, V, A99)



CENTRAL FARM (364.02 AC TOTAL, 0 AC TILLABLE)

# TOPOGRAPHY



171 ft

201 ft

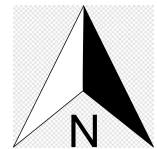


Center: 34.446147, -90.940926

07-3S-2E

Big Creek Township  
Phillips County, AR

Source:	USGS 10m DEM
Interval(ft):	3
Max:	201.0 ft
Min:	171.0 ft
Range:	30.0 ft
Average:	186.0 ft

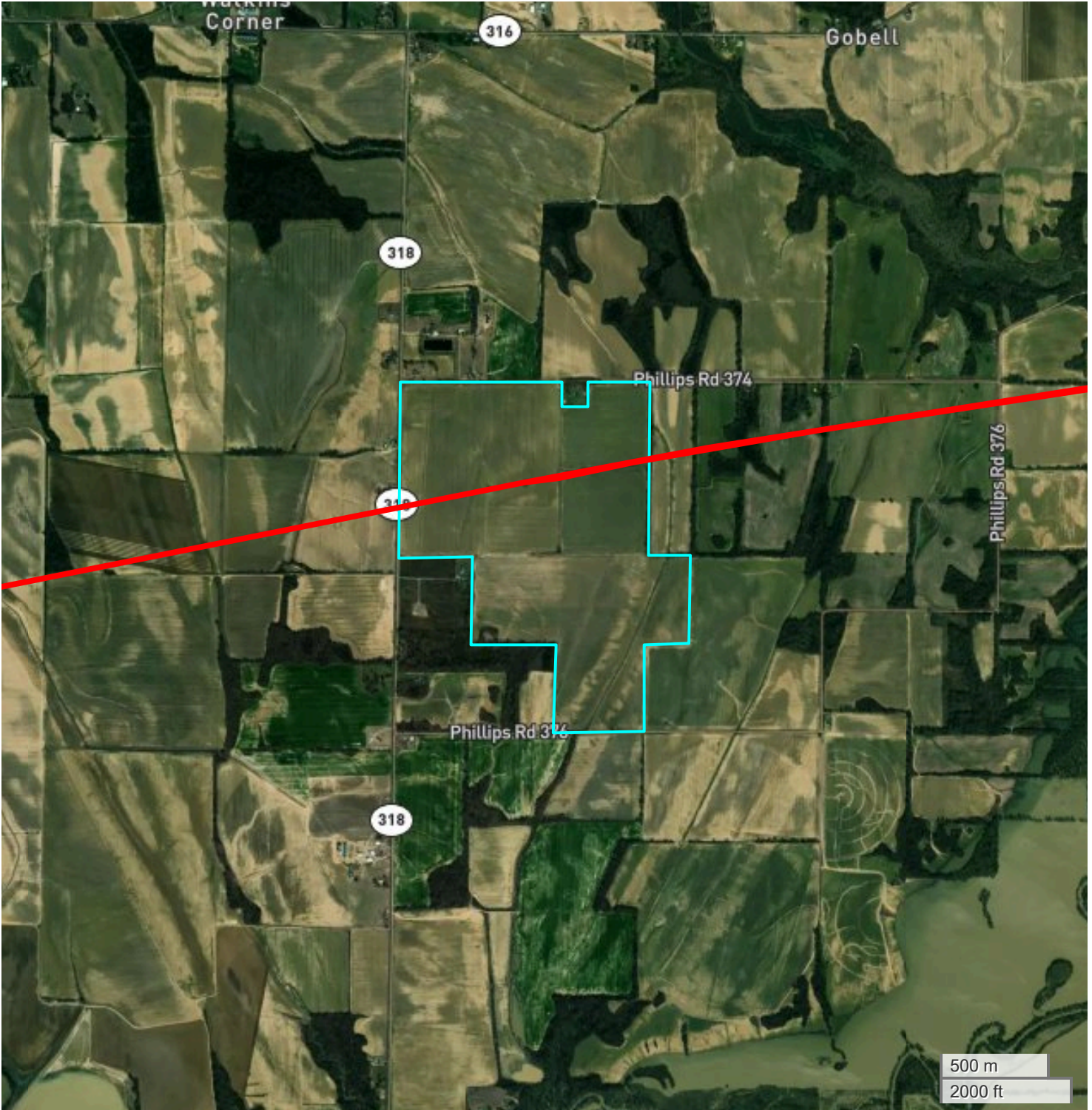


FarmWorth, LLC makes no representations or warranties, express or implied, as to the accuracy of any information, data, numerical values, boundaries, or any other information generated through the use of FarmWorth.com. User is solely responsible for independently investigating and determining all information provided through FarmWorth.com prior to use and waives any and all claims against FarmWorth, LLC for any inaccuracies or inconsistencies in the information and/or data.










CENTRAL FARM (364.02 AC TOTAL, 0 AC TILLABLE)

# ENERGY MAP



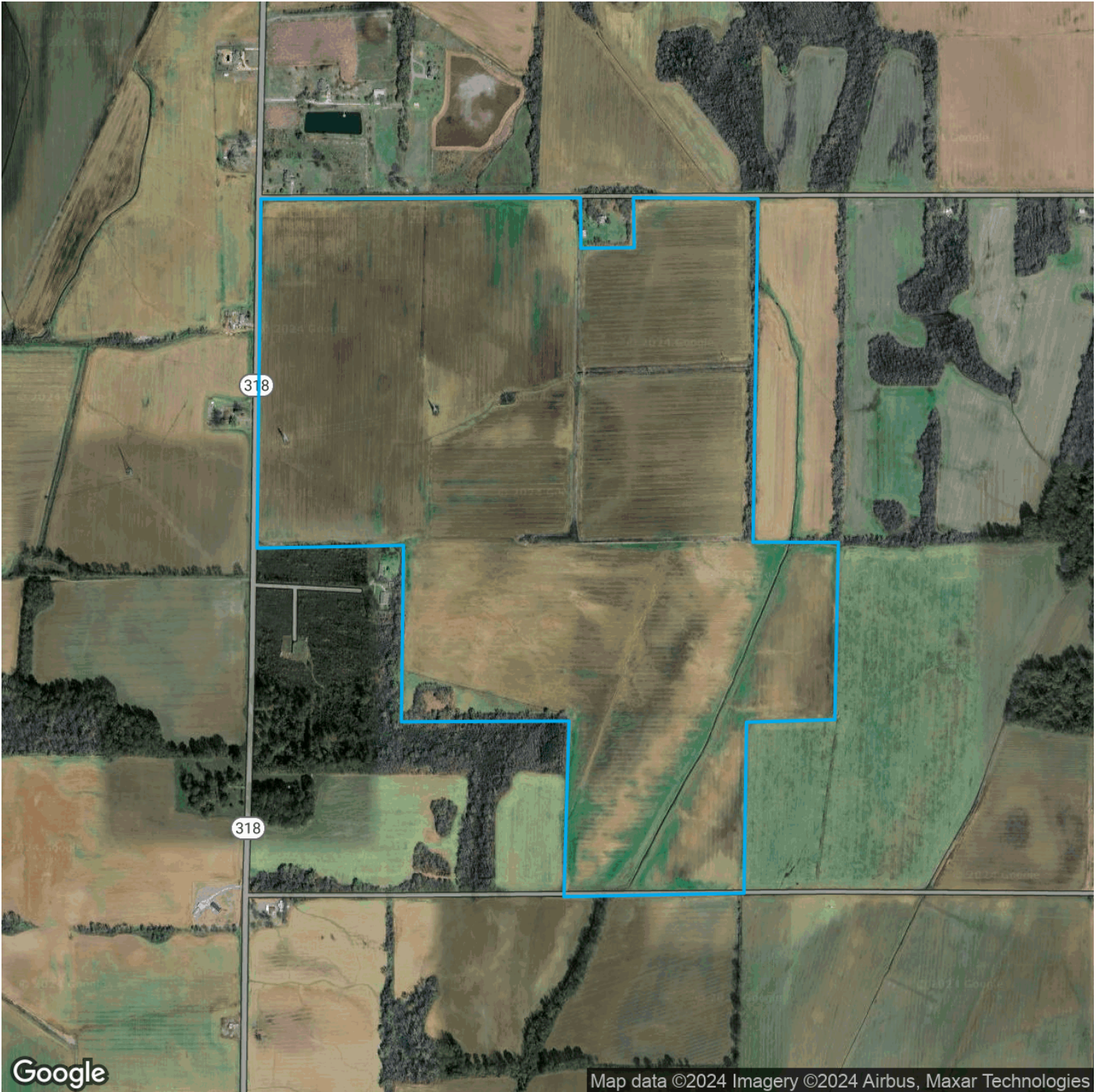
FarmWorth, LLC makes no representations or warranties, express or implied, as to the accuracy of any information, data, numerical values, boundaries, or any other information generated through the use of FarmWorth.com. User is solely responsible for independently investigating and determining all information provided through FarmWorth.com prior to use and waives any and all claims against FarmWorth, LLC for any inaccuracies or inconsistencies in the information and/or data.

-  Transmission Lines
-  Substations
-  Wind Turbine
-  Wind Farm
-  Solar
-  Oil and Gas(Active)
-  Oil and Gas(Abandoned)



CENTRAL FARM (364.02 AC TOTAL, 0 AC TILLABLE)

# PROXIMITY MAP



Google

Map data ©2024 Imagery ©2024 Airbus, Maxar Technologies

FarmWorth, LLC makes no representations or warranties, express or implied, as to the accuracy of any information, data, numerical values, boundaries, or any other information generated through the use of FarmWorth.com. User is solely responsible for independently investigating and determining all information provided through FarmWorth.com prior to use and waives any and all claims against FarmWorth, LLC for any inaccuracies or inconsistencies in the information and/or data.



CENTRAL FARM (364.02 AC TOTAL, 0 AC TILLABLE)

# REGIONAL MAP



FarmWorth, LLC makes no representations or warranties, express or implied, as to the accuracy of any information, data, numerical values, boundaries, or any other information generated through the use of FarmWorth.com. User is solely responsible for independently investigating and determining all information provided through FarmWorth.com prior to use and waives any and all claims against FarmWorth, LLC for any inaccuracies or inconsistencies in the information and/or data.



CENTRAL FARM (364.02 AC TOTAL, 0 AC TILLABLE)

# FARMLAND INSIGHTS

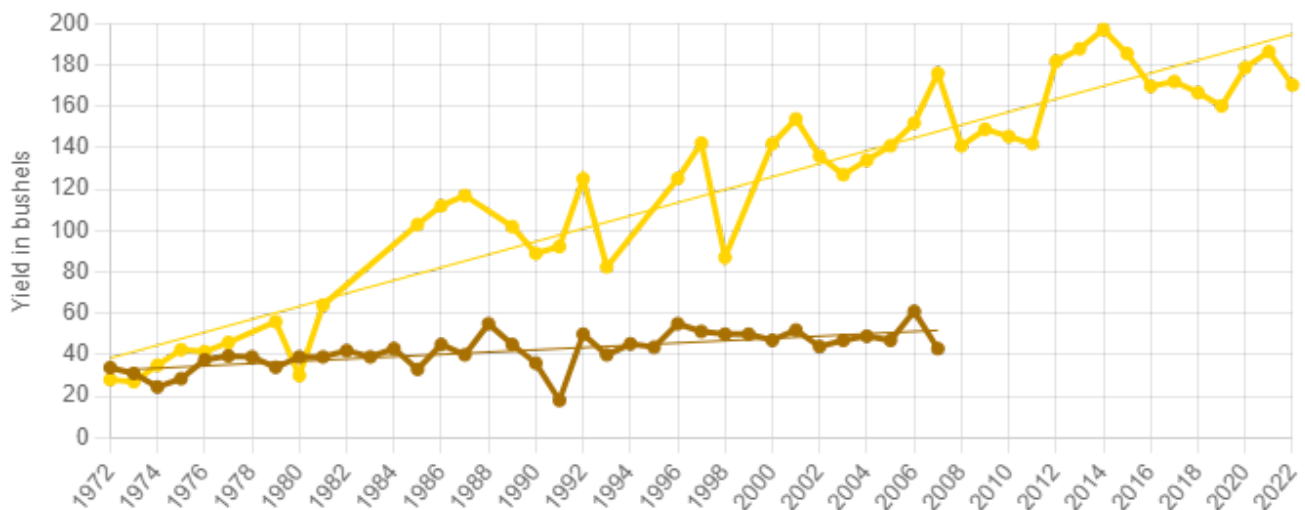
## Farmland Statistics for Phillips County, AR for 2023

	Attribute	Year	Value
AR Average	Farmland Value (\$/ac)	2023	\$3,180
	Cash Rent (\$/ac)	2023	\$119
	Farmland Returns (%)	2023	4.62%
Phillips County Average	Price (\$/ac)	2023	\$3,860
	Cash Rent (\$/ac)	2023	\$148/ac
	National Productivity Index (NCCPI3 All Crops)	2023	56
	State Crop Productivity Index (CSR2 / IL / CPI)	2023	NaN

## RMA Statistics for Phillips County, AR for 2022

Top Crops	Year	Yield (bu)	Trend (bu/year)
Wheat	2022	50.3	0.49
Cotton	2022	0	0
Corn	2022	123.7	2.06

Crop yields for top crops from 1972 onwards



FarmWorth, LLC makes no representations or warranties, express or implied, as to the accuracy of any information, data, numerical values, boundaries, or any other information generated through the use of FarmWorth.com. User is solely responsible for independently investigating and determining all information provided through FarmWorth.com prior to use and waives any and all claims against FarmWorth, LLC for any inaccuracies or inconsistencies in the information and/or data.