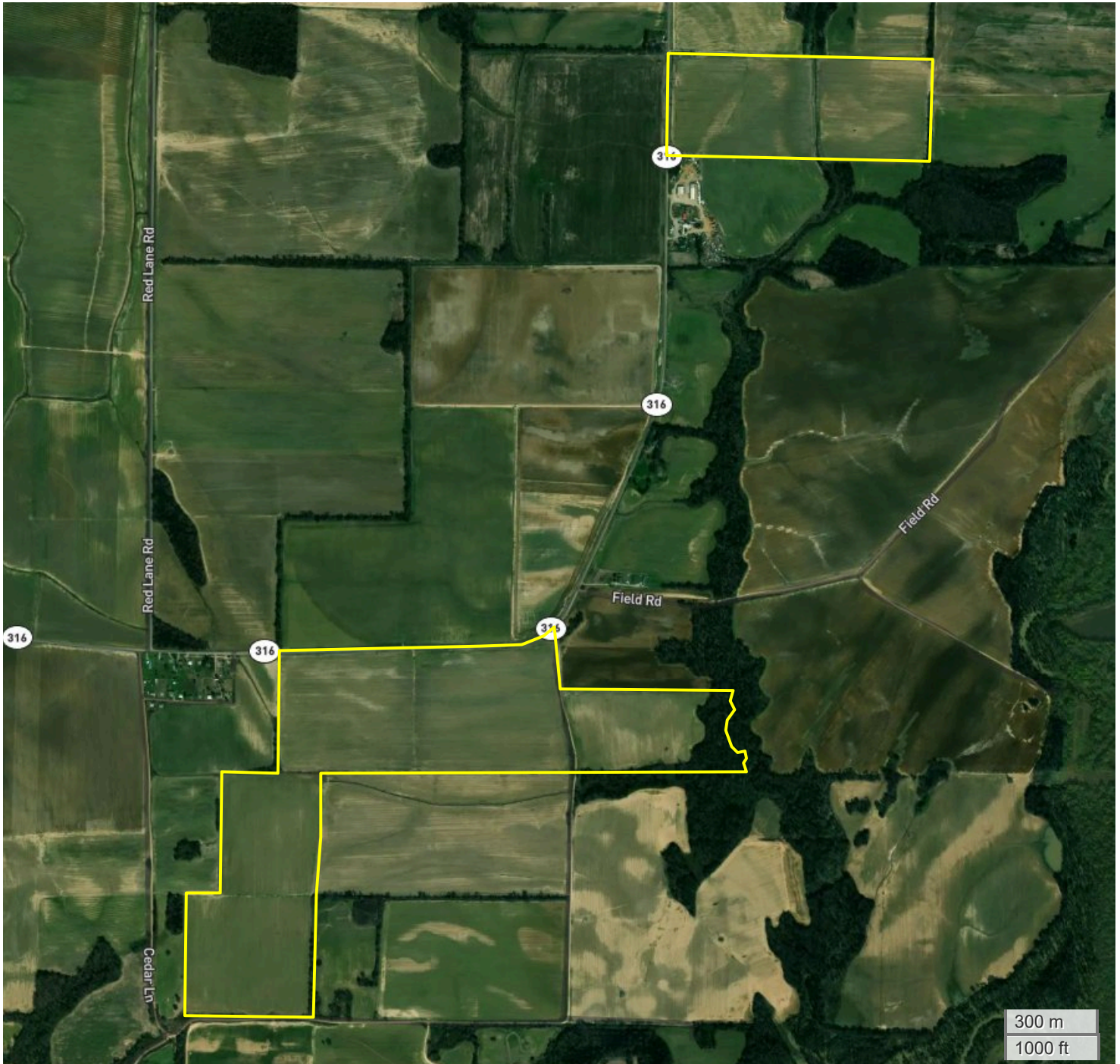




NORTHEAST FARM (259.77 AC TOTAL, 0 AC TILLABLE)

AERIAL MAP

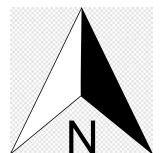


Center: 34.474436, -90.896464

33-2S-2E

Big Creek Township

Phillips County, AR

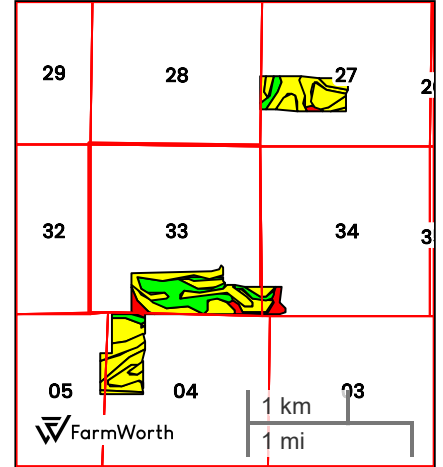
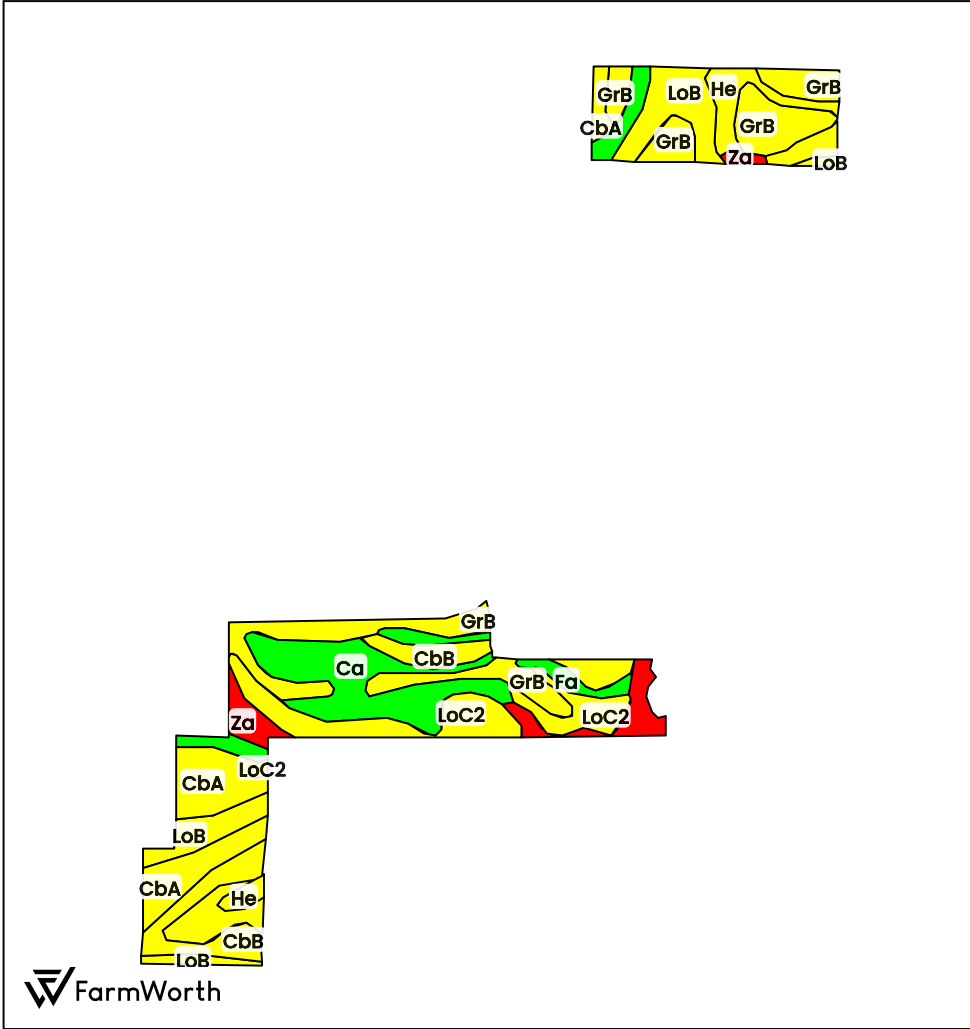


FarmWorth, LLC makes no representations or warranties, express or implied, as to the accuracy of any information, data, numerical values, boundaries, or any other information generated through the use of FarmWorth.com. User is solely responsible for independently investigating and determining all information provided through FarmWorth.com prior to use and waives any and all claims against FarmWorth, LLC for any inaccuracies or inconsistencies in the information and/or data.



NORTHEAST FARM (259.77 AC TOTAL, 0 AC TILLABLE)

TOTAL SOILS



County: **Phillips County, AR**
 Location: **33-2S-2E**
 Township: **Big Creek**
 Acres: **259.77**
 Date: **06/21/2024**



Field borders obtained from Farm Service Agency as of 2008

FarmWorth, LLC makes no representations or warranties, express or implied, as to the accuracy of any information, data, numerical values, boundaries, or any other information generated through the use of FarmWorth.com. User is solely responsible for independently investigating and determining all information provided through FarmWorth.com prior to use and waives any and all claims against FarmWorth, LLC for any inaccuracies or inconsistencies in the information and/or data.

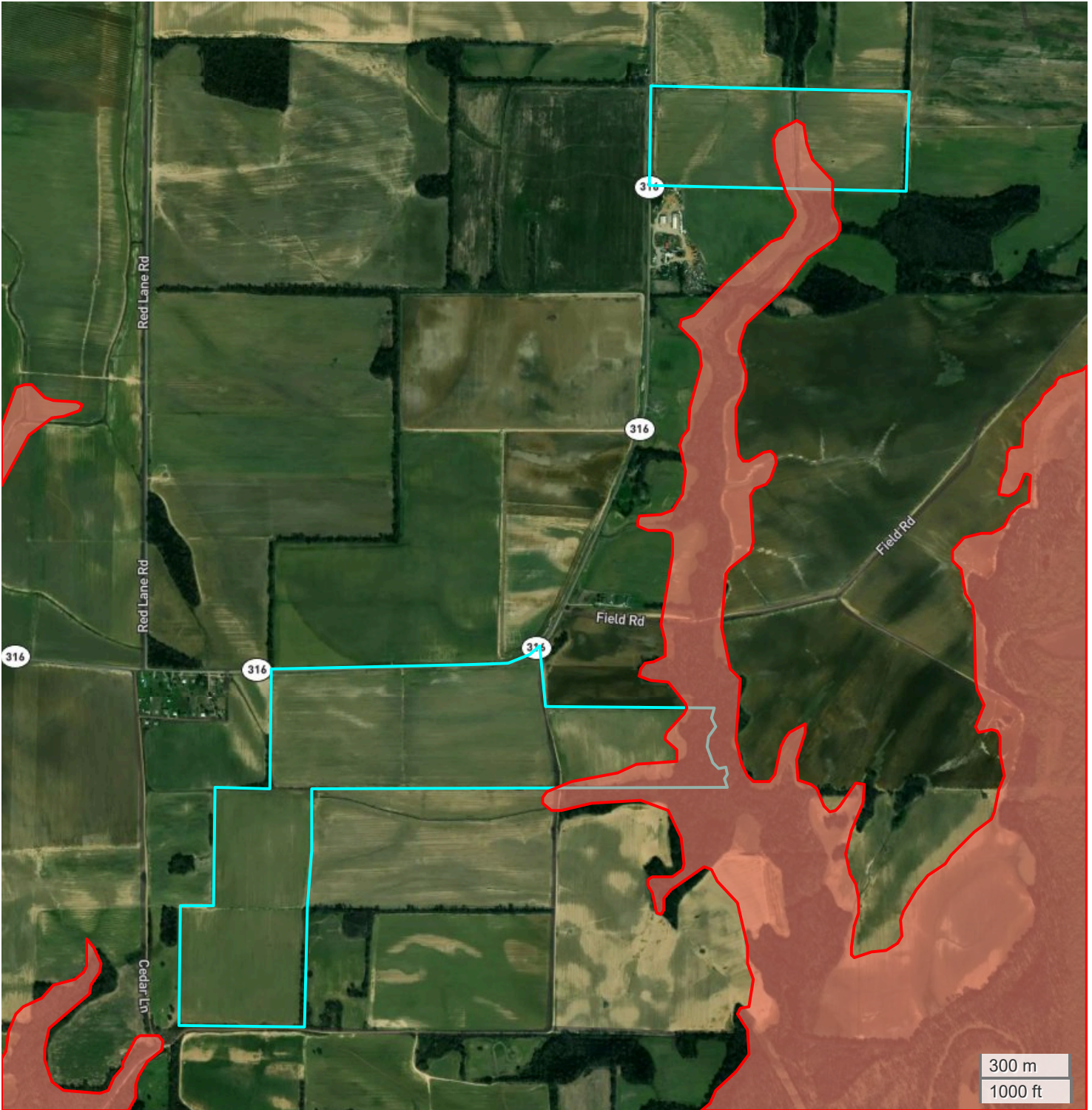
Code	Description	Acres	% of field	Overall NCCPI	Soil Class (Irr)	Soil Class (Non-Irr)	Drainage Class
GrB	Grenada silt loam, 1 to 3 percent slopes	55.46	21.35 %	62	-	2	Moderately well drained
Ca	Calhoun silt loam	46.63	17.95 %	74	-	3	Poorly drained
LoB	Loring silt loam, 1 to 3 percent slopes, west	41.77	16.08 %	65	-	2	Moderately well drained
LoC2	Loring silt loam, 3 to 8 percent slopes, eroded	29.69	11.43 %	52	-	3	Moderately well drained
CbA	Calloway silt loam, 0 to 1 percent slopes	29.44	11.33 %	58	-	2	Somewhat poorly drained
CbB	Calloway silt loam, 1 to 3 percent slopes	20.95	8.06 %	56	-	2	Somewhat poorly drained
He	Henry silt loam, 0 to 1 percent slopes	15.80	6.08 %	57	-	3	Poorly drained
Za	Zachary soils, frequently flooded	15.61	6.01 %	22	-	4	Poorly drained
Fa	Falaya silt loam	4.41	1.70 %	76	-	2	Somewhat poorly drained
Average:				60.1			

Soils data provided by USDA and NRCS.





NORTHEAST FARM (259.77 AC TOTAL, 0 AC TILLABLE)

FLOOD HAZARDS



FarmWorth, LLC makes no representations or warranties, express or implied, as to the accuracy of any information, data, numerical values, boundaries, or any other information generated through the use of FarmWorth.com. User is solely responsible for independently investigating and determining all information provided through FarmWorth.com prior to use and waives any and all claims against FarmWorth, LLC for any inaccuracies or inconsistencies in the information and/or data.

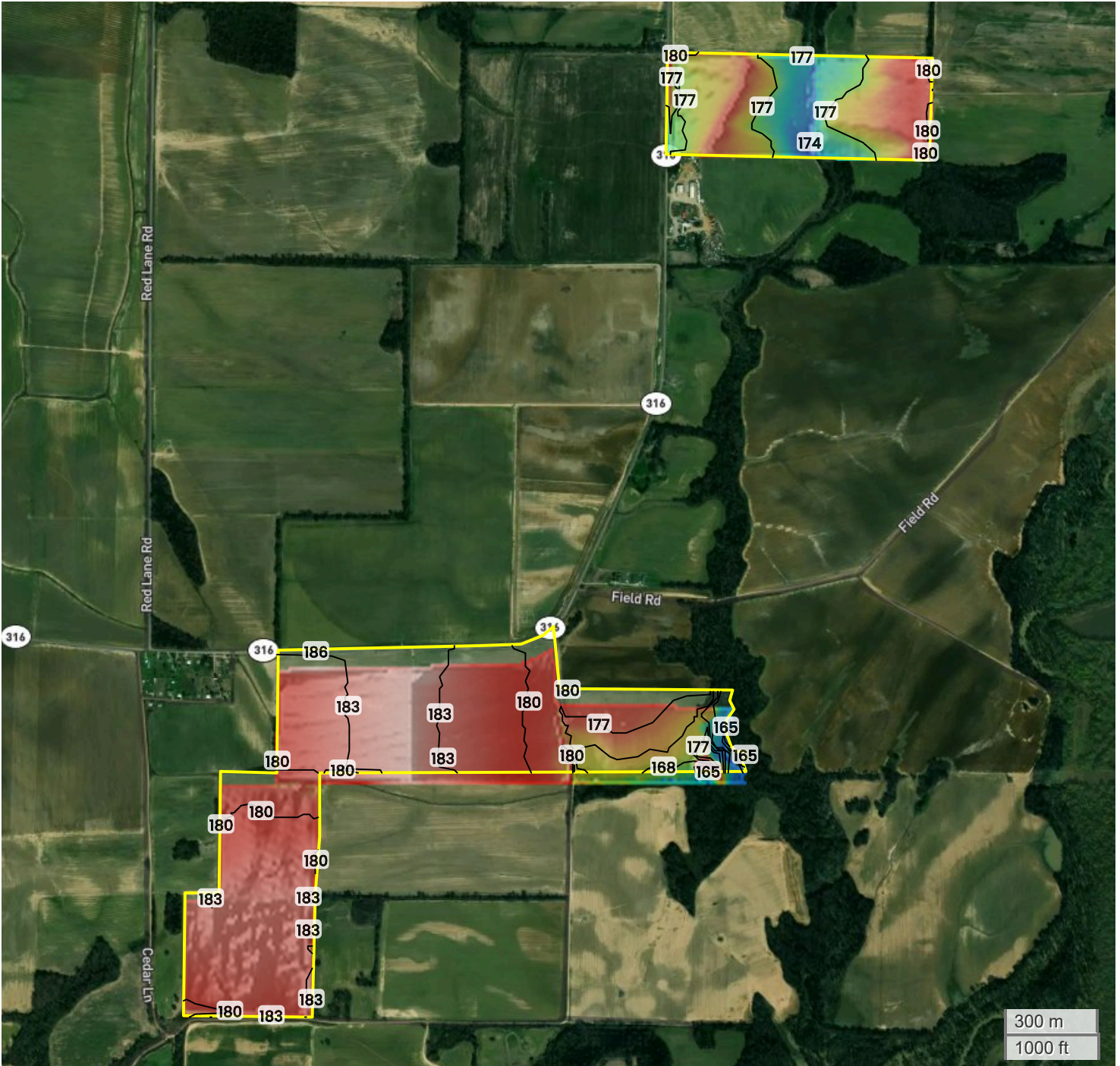
Significant Flood Hazards

-  Regulatory Floodway (Zones AE, AO, AH, VE, AR)
-  Without Base Flood Elevation (BFE), with BFE or Depth (Zones A, V, A99)



NORTHEAST FARM (259.77 AC TOTAL, 0 AC TILLABLE)

TOPOGRAPHY



165 ft 186 ft

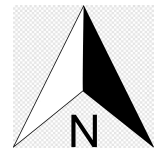


Center: 34.474434, -90.896471

33-2S-2E

**Big Creek Township
Phillips County, AR**

Source:	USGS 10m DEM
Interval(ft):	3
Max:	186.0 ft
Min:	165.0 ft
Range:	21.0 ft
Average:	175.5 ft

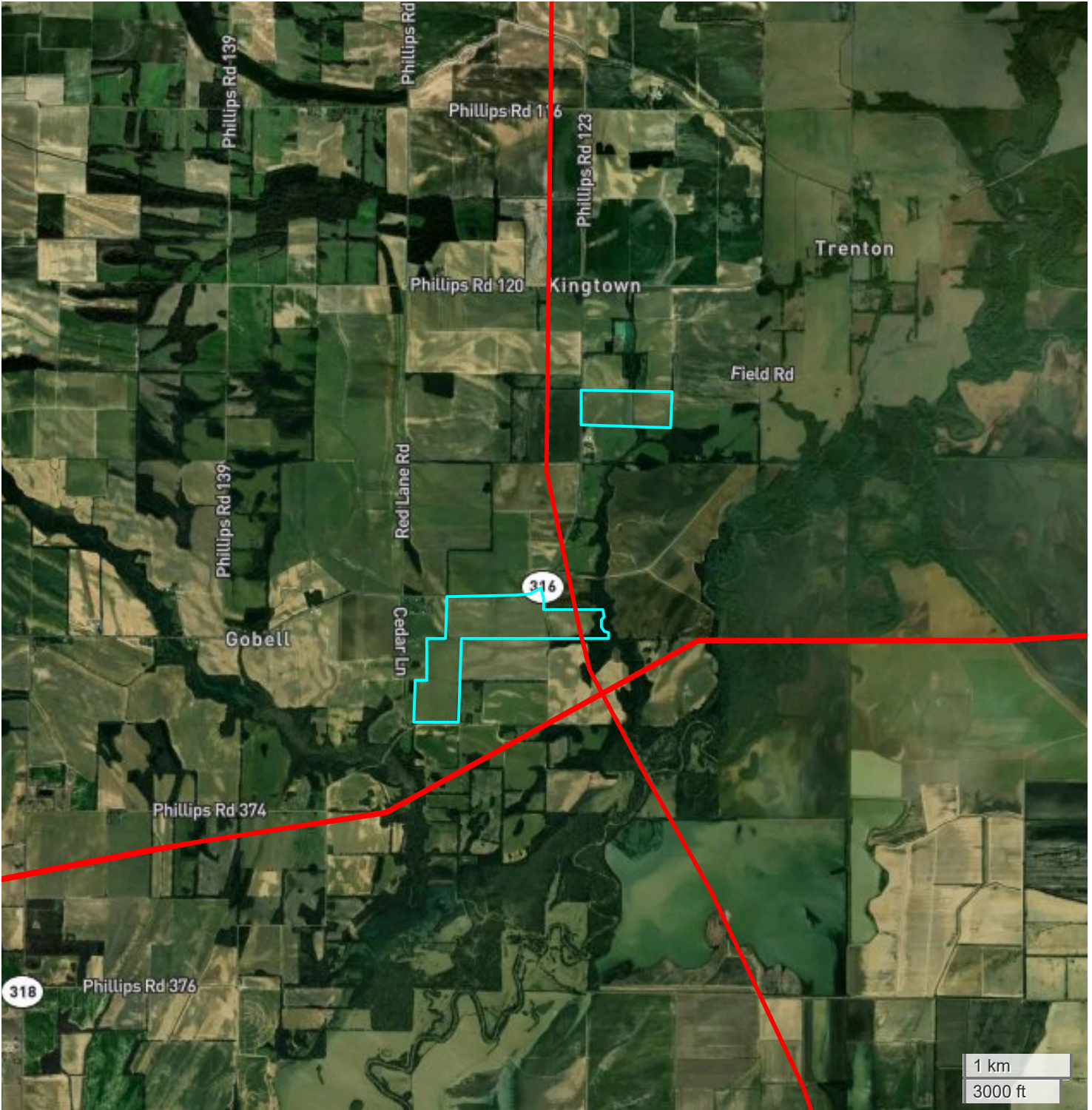


FarmWorth, LLC makes no representations or warranties, express or implied, as to the accuracy of any information, data, numerical values, boundaries, or any other information generated through the use of FarmWorth.com. User is solely responsible for independently investigating and determining all information provided through FarmWorth.com prior to use and waives any and all claims against FarmWorth, LLC for any inaccuracies or inconsistencies in the information and/or data.



NORTHEAST FARM (259.77 AC TOTAL, 0 AC TILLABLE)








ENERGY MAP



1 km
3000 ft



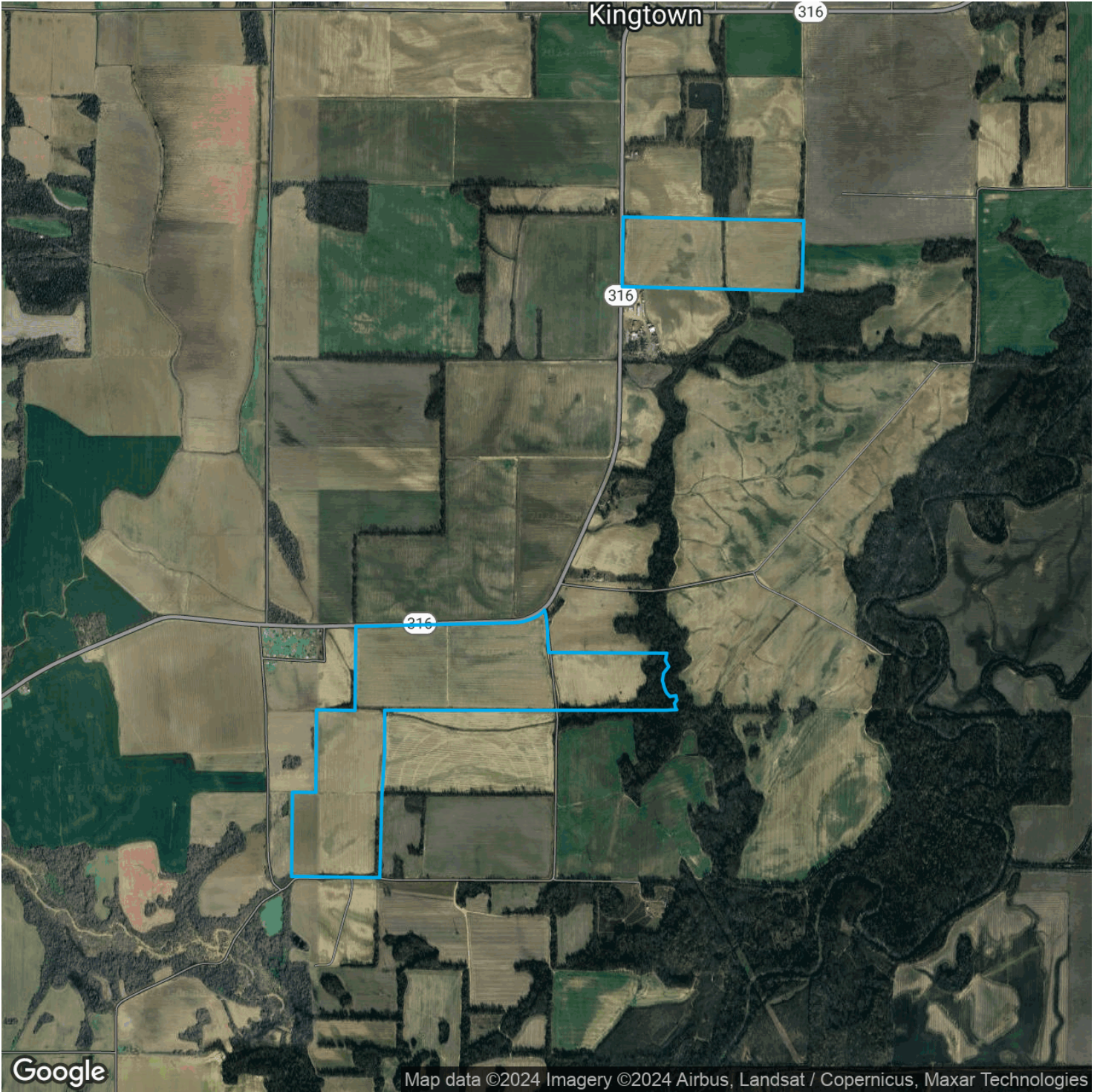
FarmWorth, LLC makes no representations or warranties, express or implied, as to the accuracy of any information, data, numerical values, boundaries, or any other information generated through the use of FarmWorth.com. User is solely responsible for independently investigating and determining all information provided through FarmWorth.com prior to use and waives any and all claims against FarmWorth, LLC for any inaccuracies or inconsistencies in the information and/or data.

-  Transmission Lines
-  Substations
-  Wind Turbine
-  Wind Farm
-  Solar
-  Oil and Gas(Active)
-  Oil and Gas(Abandoned)



NORTHEAST FARM (259.77 AC TOTAL, 0 AC TILLABLE)

PROXIMITY MAP



FarmWorth, LLC makes no representations or warranties, express or implied, as to the accuracy of any information, data, numerical values, boundaries, or any other information generated through the use of FarmWorth.com. User is solely responsible for independently investigating and determining all information provided through FarmWorth.com prior to use and waives any and all claims against FarmWorth, LLC for any inaccuracies or inconsistencies in the information and/or data.



NORTHEAST FARM (259.77 AC TOTAL, 0 AC TILLABLE)

REGIONAL MAP



FarmWorth, LLC makes no representations or warranties, express or implied, as to the accuracy of any information, data, numerical values, boundaries, or any other information generated through the use of FarmWorth.com. User is solely responsible for independently investigating and determining all information provided through FarmWorth.com prior to use and waives any and all claims against FarmWorth, LLC for any inaccuracies or inconsistencies in the information and/or data.



NORTHEAST FARM (259.77 AC TOTAL, 0 AC TILLABLE)

FARMLAND INSIGHTS

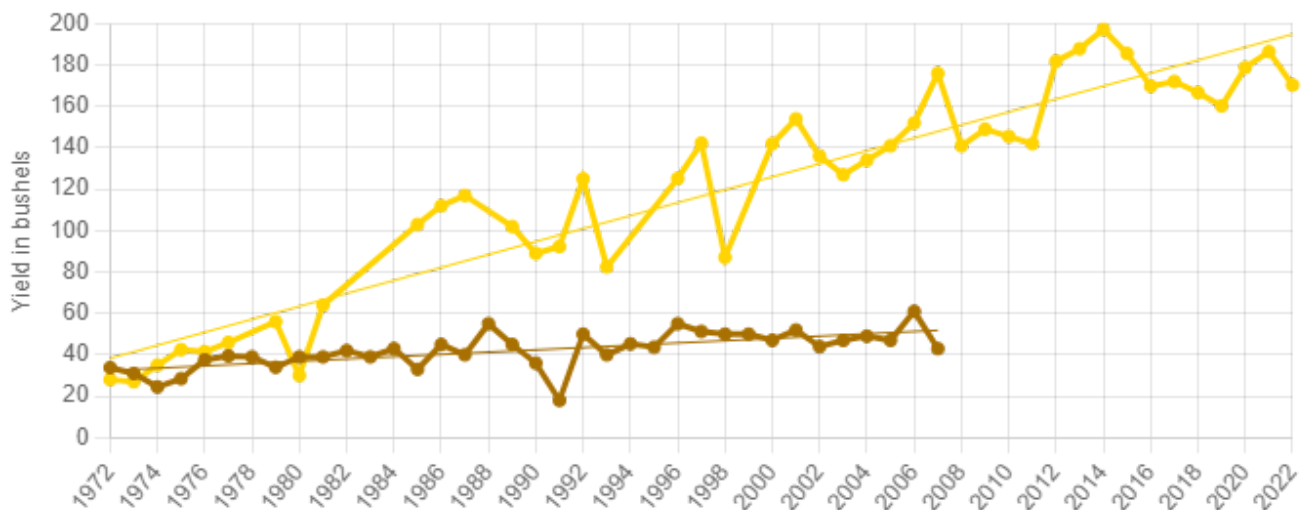
Farmland Statistics for Phillips County, AR for 2023

	Attribute	Year	Value
AR Average	Farmland Value (\$/ac)	2023	\$3,180
	Cash Rent (\$/ac)	2023	\$119
	Farmland Returns (%)	2023	4.62%
Phillips County Average	Price (\$/ac)	2023	\$3,860
	Cash Rent (\$/ac)	2023	\$148/ac
	National Productivity Index (NCCPI3 All Crops)	2023	56
	State Crop Productivity Index (CSR2 / IL / CPI)	2023	NaN

RMA Statistics for Phillips County, AR for 2022

Top Crops	Year	Yield (bu)	Trend (bu/year)
Wheat	2022	50.3	0.49
Cotton	2022	0	0
Corn	2022	123.7	2.06

Crop yields for top crops from 1972 onwards



FarmWorth, LLC makes no representations or warranties, express or implied, as to the accuracy of any information, data, numerical values, boundaries, or any other information generated through the use of FarmWorth.com. User is solely responsible for independently investigating and determining all information provided through FarmWorth.com prior to use and waives any and all claims against FarmWorth, LLC for any inaccuracies or inconsistencies in the information and/or data.