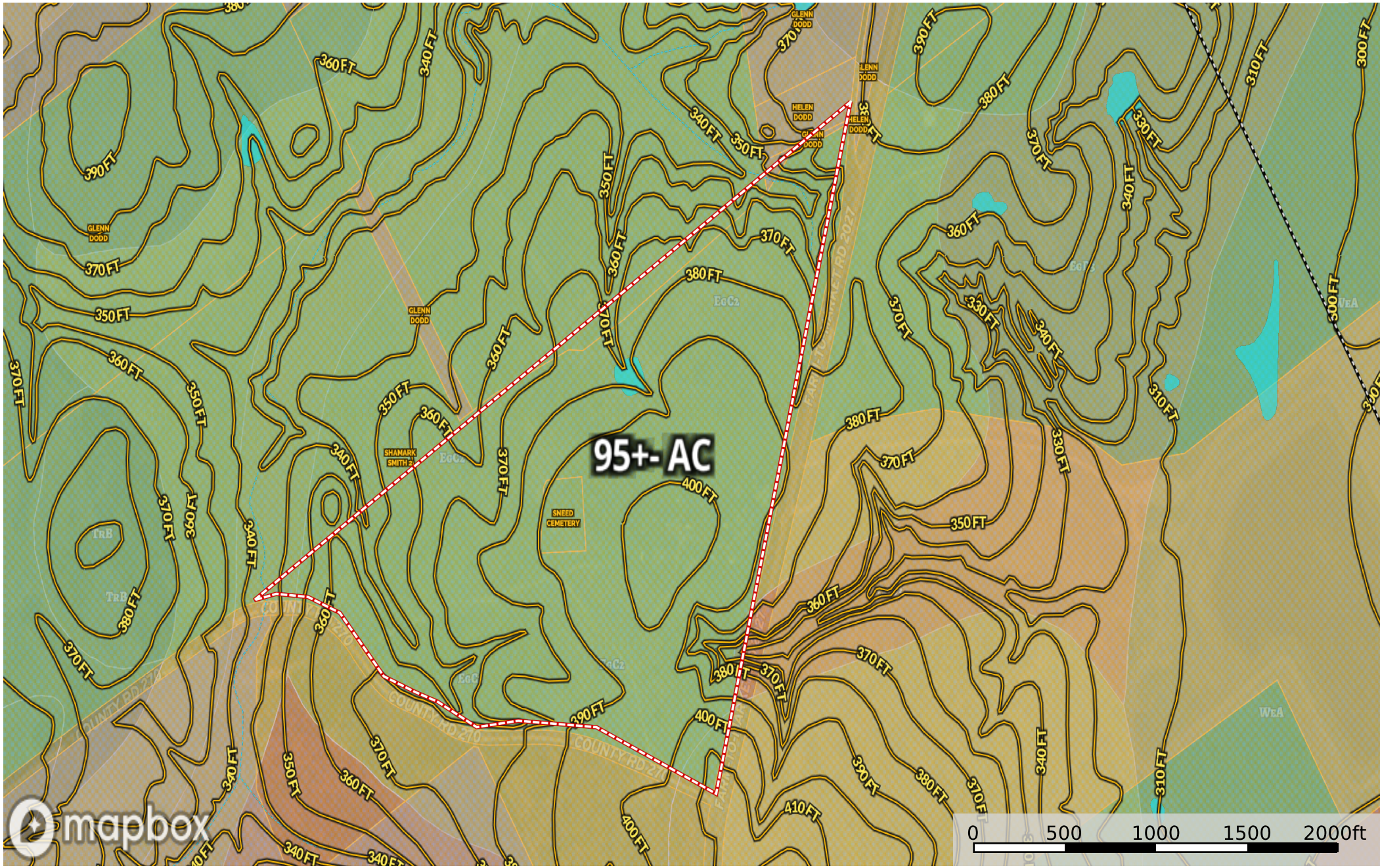








Marcus 95+- acres
 Milam County, Texas, 95 AC +/-



 Boundary	 Residential	 Commercial	 Industrial	 Agricultural	 Vacant	 Miscellaneous	 100 Year Floodplain	 500 Year Floodplain	 Floodway	 Special	 Unmapped/ Not Included	 Stream, Intermittent	 River/Creek
 Water Body	 Voltage Unavailable	 Voltage 0 - 99 KV	 Voltage 100 - 161 KV	 Voltage 220 - 287 KV	 Voltage 345 KV	 Voltage 500 KV	 Voltage 735 KV+	 Crude Oil	 Natural Gas	 Other			