



**20± ACRES**  
**UNION PARISH, LOUISIANA**  
**\$50,000**



**SMALLTOWN**  
HUNTING PROPERTIES  
& REAL ESTATE<sup>SM</sup>

**OFFICE (769) 888-2522**

# THE UNION 20

# PROPERTY PROFILE

## LOCATION:

- Union Parish, LA
- 5± Miles NE of Marion
- Off Riley Trestle Road

## COORDINATES:

- 32.96121, -92.18394

## PROPERTY USE:

- Hunting
- Potential Camp Site

## PROPERTY INFORMATION:

- 20± Acres
- No Deeded Access
- Utilities Nearby
- Mineral Rights: Negotiable
- Borders Upper Ouachita NWR

## TAX INFORMATION:

- 2023 - \$30.17
- Parcel 1520230002



**SMALLTOWN**  
HUNTING PROPERTIES  
& REAL ESTATE<sup>SM</sup>

**HEATH EUBANKS**

LAND SPECIALIST

C: 318-608-7848

O: 769-888-2522

[heath@smalltownproperties.com](mailto:heath@smalltownproperties.com)

4848 Main St. - Flora, MS 39071

[smalltownproperties.com](http://smalltownproperties.com)

Information is believed to be accurate but not guaranteed.

# WELCOME TO THE UNION 20

IF YOU ARE LOOKING FOR A SMALL HUNTING TRACT THAT HUNTS BIG, THIS MIGHT BE THE ONE! Featuring 20± acres in Union Parish, LA, this property borders the Upper Ouachita National Wildlife Refuge on the east property boundary. Hunt and manage your own personal property while also having access to over 40,000 acres of public hunting right out of your back door. A check-in station to the Upper Ouachita NWR is within walking distance on Riley Trestle Road. This place is going to offer some great hunting in a game-rich environment. Additionally, this would make a great tract to have your own camp. There is no known deeded access to the property, although it sits only feet from Riley Trestle Road.

To learn more, call Heath Eubanks today!



**SMALLTOWN**  
HUNTING PROPERTIES  
& REAL ESTATE<sup>SM</sup>

**HEATH EUBANKS**

LAND SPECIALIST

C: 318-608-7848

O: 769-888-2522

[heath@smalltownproperties.com](mailto:heath@smalltownproperties.com)

4848 Main St. - Flora, MS 39071

[smalltownproperties.com](http://smalltownproperties.com)

Information is believed to be accurate but not guaranteed.

20 ± ACRES

UNION PARISH, LOUISIANA



**SMALLTOWN**  
HUNTING PROPERTIES  
& REAL ESTATE<sup>SM</sup>

**HEATH EUBANKS**

LAND SPECIALIST

C: 318-608-7848

O: 769-888-2522

[heath@smalltownproperties.com](mailto:heath@smalltownproperties.com)

4848 Main St. - Flora, MS 39071

[smalltownproperties.com](http://smalltownproperties.com)

Information is believed to be accurate but not guaranteed.

20 ± ACRES

UNION PARISH, LOUISIANA



**SMALLTOWN**  
HUNTING PROPERTIES  
& REAL ESTATE<sup>SM</sup>

**HEATH EUBANKS**

LAND SPECIALIST

C: 318-608-7848

O: 769-888-2522

[heath@smalltownproperties.com](mailto:heath@smalltownproperties.com)

4848 Main St. - Flora, MS 39071

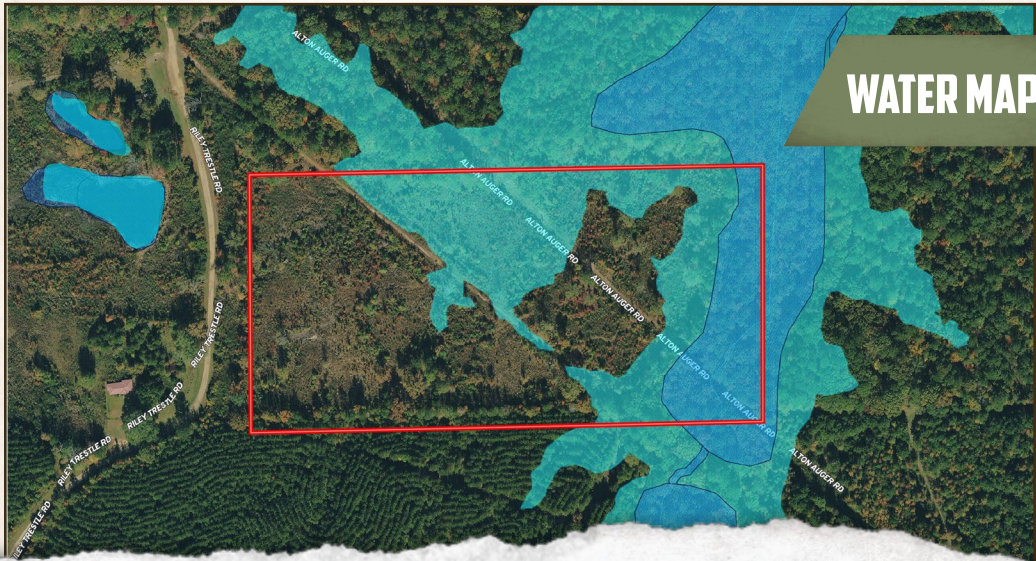
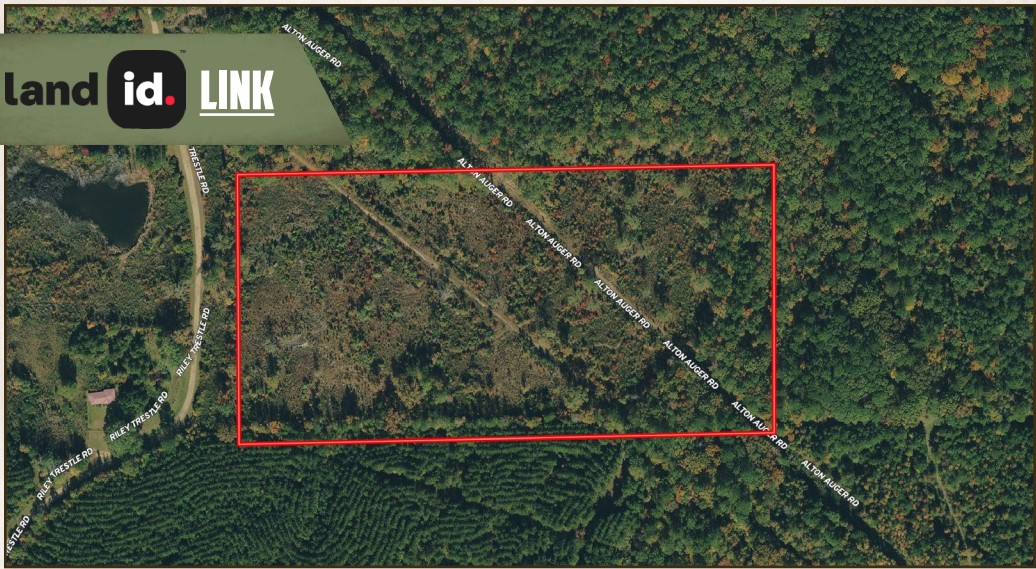
[smalltownproperties.com](http://smalltownproperties.com)

Information is believed to be accurate but not guaranteed.

20 ± ACRES

UNION PARISH, LOUISIANA

land id. LINK



**SMALLTOWN**  
HUNTING PROPERTIES  
& REAL ESTATE<sup>SM</sup>

**HEATH EUBANKS**

LAND SPECIALIST

C: 318-608-7848

O: 769-888-2522

[heath@smalltownproperties.com](mailto:heath@smalltownproperties.com)

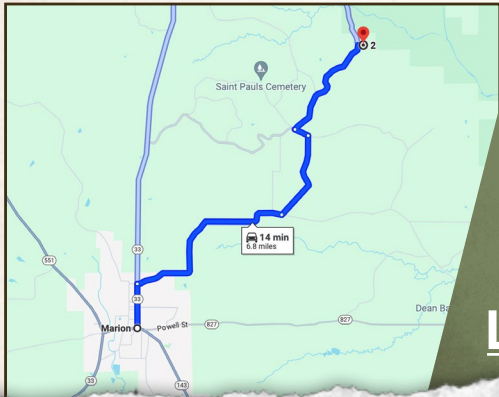
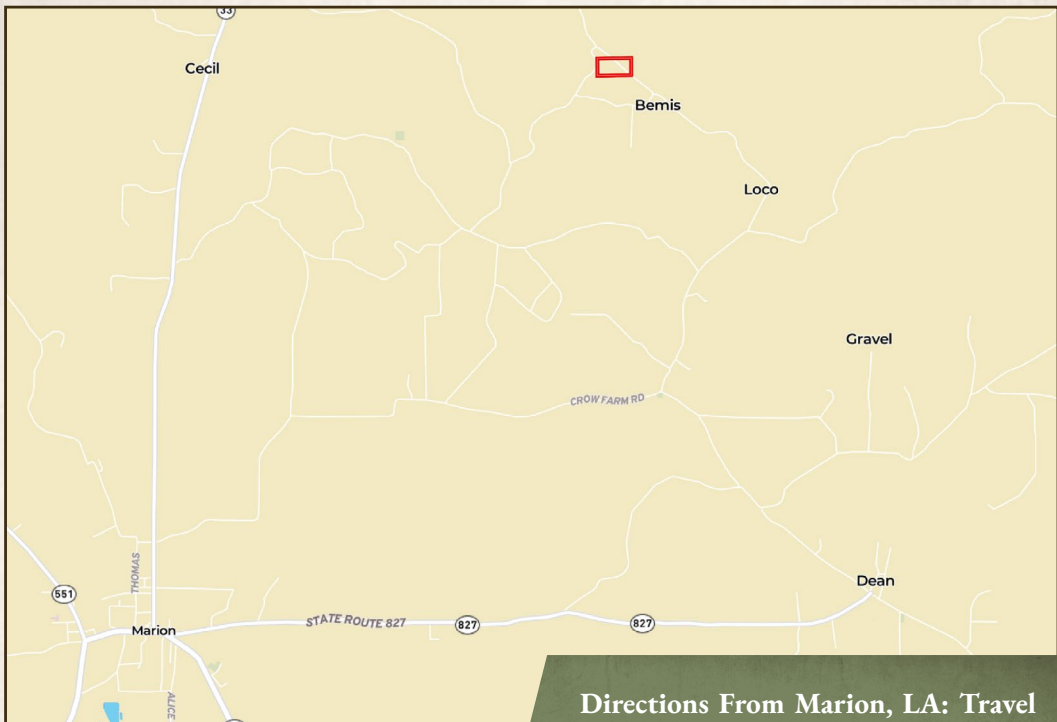
4848 Main St. - Flora, MS 39071

[smalltownproperties.com](http://smalltownproperties.com)

Information is believed to be accurate but not guaranteed.

20 ± ACRES

UNION PARISH, LOUISIANA



Directions From Marion, LA: Travel north on HWY 33 for approximately 3 miles and then travel east on St. Paul Cemetery Road for .5 miles. Turn right on Van Hurt Road and continue for two miles. Make a right on St Paul Church Road, then an immediate left onto Riley Trestle Road. In approximately 1.5 miles the property will be on the east side of Riley Trestle Road.

**LINK TO GOOGLE MAP DIRECTIONS**



**SMALLTOWN**  
HUNTING PROPERTIES  
& REAL ESTATE<sup>SM</sup>

**HEATH EUBANKS**  
LAND SPECIALIST  
C: 318-608-7848  
O: 769-888-2522  
heath@smalltownproperties.com  
4848 Main St. - Flora, MS 39071  
smalltownproperties.com

Information is believed to be accurate but not guaranteed.