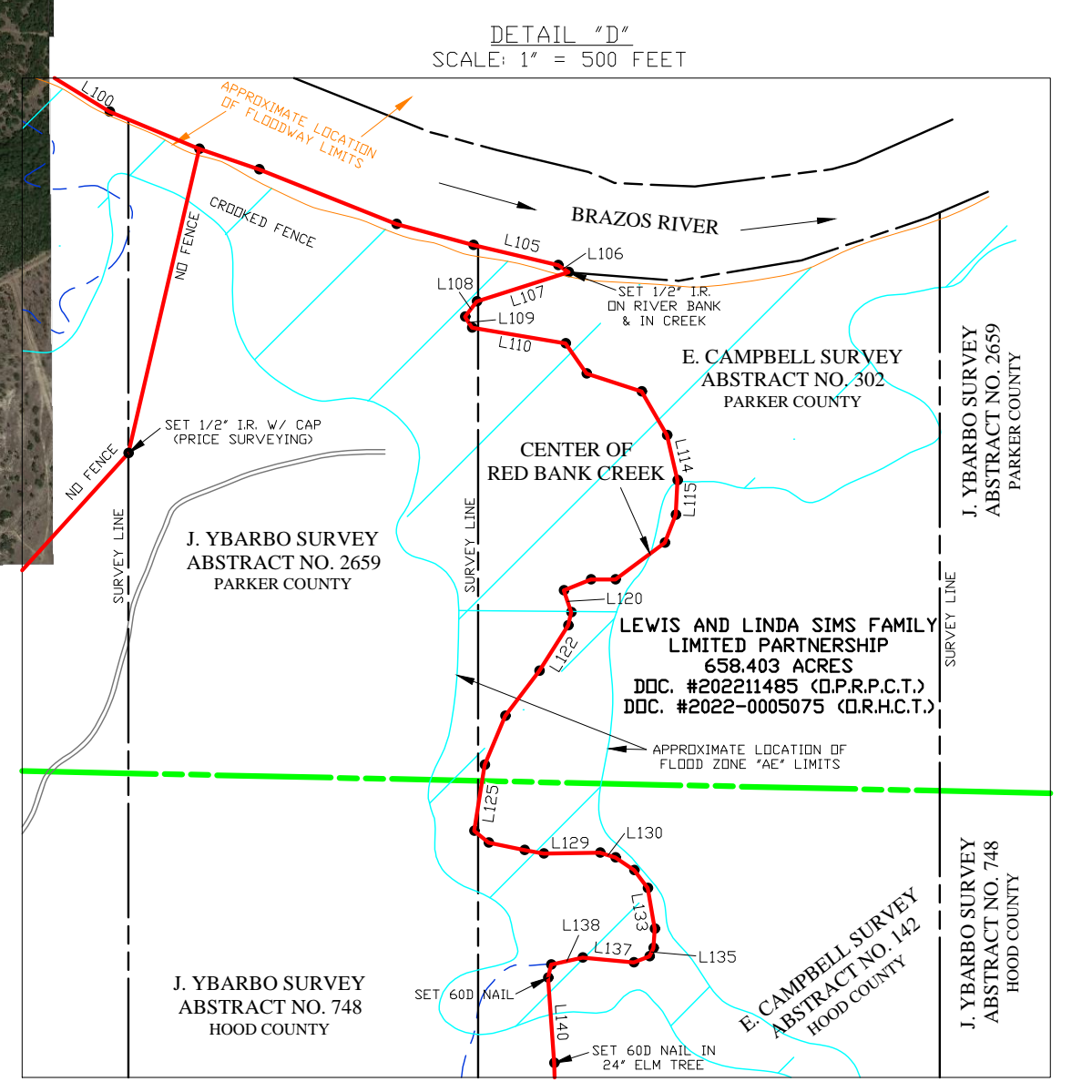


LINE	BEARING	DISTANCE
L1	N 00°16'40\"	4229.89'
L2	S 89°42'25\"	1373.13'
L3	N 00°16'40\"	4229.89'
L4	S 89°42'25\"	1373.13'
L5	N 00°16'40\"	4229.89'
L6	S 89°42'25\"	1373.13'
L7	N 00°16'40\"	4229.89'
L8	S 89°42'25\"	1373.13'
L9	N 00°16'40\"	4229.89'
L10	S 89°42'25\"	1373.13'
L11	N 00°16'40\"	4229.89'
L12	S 89°42'25\"	1373.13'
L13	N 00°16'40\"	4229.89'
L14	S 89°42'25\"	1373.13'
L15	N 00°16'40\"	4229.89'
L16	S 89°42'25\"	1373.13'
L17	N 00°16'40\"	4229.89'
L18	S 89°42'25\"	1373.13'
L19	N 00°16'40\"	4229.89'
L20	S 89°42'25\"	1373.13'
L21	N 00°16'40\"	4229.89'
L22	S 89°42'25\"	1373.13'
L23	N 00°16'40\"	4229.89'
L24	S 89°42'25\"	1373.13'
L25	N 00°16'40\"	4229.89'
L26	S 89°42'25\"	1373.13'
L27	N 00°16'40\"	4229.89'
L28	S 89°42'25\"	1373.13'
L29	N 00°16'40\"	4229.89'
L30	S 89°42'25\"	1373.13'
L31	N 00°16'40\"	4229.89'
L32	S 89°42'25\"	1373.13'
L33	N 00°16'40\"	4229.89'
L34	S 89°42'25\"	1373.13'
L35	N 00°16'40\"	4229.89'
L36	S 89°42'25\"	1373.13'
L37	N 00°16'40\"	4229.89'
L38	S 89°42'25\"	1373.13'
L39	N 00°16'40\"	4229.89'
L40	S 89°42'25\"	1373.13'
L41	N 00°16'40\"	4229.89'
L42	S 89°42'25\"	1373.13'
L43	N 00°16'40\"	4229.89'
L44	S 89°42'25\"	1373.13'
L45	N 00°16'40\"	4229.89'
L46	S 89°42'25\"	1373.13'
L47	N 00°16'40\"	4229.89'
L48	S 89°42'25\"	1373.13'
L49	N 00°16'40\"	4229.89'
L50	S 89°42'25\"	1373.13'
L51	N 00°16'40\"	4229.89'
L52	S 89°42'25\"	1373.13'
L53	N 00°16'40\"	4229.89'
L54	S 89°42'25\"	1373.13'
L55	N 00°16'40\"	4229.89'
L56	S 89°42'25\"	1373.13'
L57	N 00°16'40\"	4229.89'
L58	S 89°42'25\"	1373.13'
L59	N 00°16'40\"	4229.89'
L60	S 89°42'25\"	1373.13'
L61	N 00°16'40\"	4229.89'
L62	S 89°42'25\"	1373.13'
L63	N 00°16'40\"	4229.89'
L64	S 89°42'25\"	1373.13'
L65	N 00°16'40\"	4229.89'
L66	S 89°42'25\"	1373.13'
L67	N 00°16'40\"	4229.89'
L68	S 89°42'25\"	1373.13'
L69	N 00°16'40\"	4229.89'
L70	S 89°42'25\"	1373.13'
L71	N 00°16'40\"	4229.89'
L72	S 89°42'25\"	1373.13'
L73	N 00°16'40\"	4229.89'
L74	S 89°42'25\"	1373.13'
L75	N 00°16'40\"	4229.89'
L76	S 89°42'25\"	1373.13'
L77	N 00°16'40\"	4229.89'
L78	S 89°42'25\"	1373.13'
L79	N 00°16'40\"	4229.89'
L80	S 89°42'25\"	1373.13'
L81	N 00°16'40\"	4229.89'
L82	S 89°42'25\"	1373.13'
L83	N 00°16'40\"	4229.89'
L84	S 89°42'25\"	1373.13'
L85	N 00°16'40\"	4229.89'
L86	S 89°42'25\"	1373.13'
L87	N 00°16'40\"	4229.89'
L88	S 89°42'25\"	1373.13'
L89	N 00°16'40\"	4229.89'
L90	S 89°42'25\"	1373.13'
L91	N 00°16'40\"	4229.89'
L92	S 89°42'25\"	1373.13'
L93	N 00°16'40\"	4229.89'
L94	S 89°42'25\"	1373.13'
L95	N 00°16'40\"	4229.89'
L96	S 89°42'25\"	1373.13'
L97	N 00°16'40\"	4229.89'
L98	S 89°42'25\"	1373.13'
L99	N 00°16'40\"	4229.89'
L100	S 89°42'25\"	1373.13'
L101	N 00°16'40\"	4229.89'
L102	S 89°42'25\"	1373.13'
L103	N 00°16'40\"	4229.89'
L104	S 89°42'25\"	1373.13'
L105	N 00°16'40\"	4229.89'
L106	S 89°42'25\"	1373.13'
L107	N 00°16'40\"	4229.89'
L108	S 89°42'25\"	1373.13'
L109	N 00°16'40\"	4229.89'
L110	S 89°42'25\"	1373.13'
L111	N 00°16'40\"	4229.89'
L112	S 89°42'25\"	1373.13'
L113	N 00°16'40\"	4229.89'
L114	S 89°42'25\"	1373.13'
L115	N 00°16'40\"	4229.89'
L116	S 89°42'25\"	1373.13'
L117	N 00°16'40\"	4229.89'
L118	S 89°42'25\"	1373.13'
L119	N 00°16'40\"	4229.89'
L120	S 89°42'25\"	1373.13'
L121	N 00°16'40\"	4229.89'
L122	S 89°42'25\"	1373.13'
L123	N 00°16'40\"	4229.89'
L124	S 89°42'25\"	1373.13'
L125	N 00°16'40\"	4229.89'
L126	S 89°42'25\"	1373.13'
L127	N 00°16'40\"	4229.89'
L128	S 89°42'25\"	1373.13'
L129	N 00°16'40\"	4229.89'
L130	S 89°42'25\"	1373.13'
L131	N 00°16'40\"	4229.89'
L132	S 89°42'25\"	1373.13'
L133	N 00°16'40\"	4229.89'
L134	S 89°42'25\"	1373.13'
L135	N 00°16'40\"	4229.89'
L136	S 89°42'25\"	1373.13'
L137	N 00°16'40\"	4229.89'
L138	S 89°42'25\"	1373.13'
L139	N 00°16'40\"	4229.89'
L140	S 89°42'25\"	1373.13'
L141	N 00°16'40\"	4229.89'
L142	S 89°42'25\"	1373.13'
L143	N 00°16'40\"	4229.89'
L144	S 89°42'25\"	1373.13'
L145	N 00°16'40\"	4229.89'
L146	S 89°42'25\"	1373.13'
L147	N 00°16'40\"	4229.89'
L148	S 89°42'25\"	1373.13'
L149	N 00°16'40\"	4229.89'
L150	S 89°42'25\"	1373.13'
L151	N 00°16'40\"	4229.89'
L152	S 89°42'25\"	1373.13'
L153	N 00°16'40\"	4229.89'
L154	S 89°42'25\"	1373.13'
L155	N 00°16'40\"	4229.89'
L156	S 89°42'25\"	1373.13'
L157	N 00°16'40\"	4229.89'
L158	S 89°42'25\"	1373.13'
L159	N 00°16'40\"	4229.89'
L160	S 89°42'25\"	1373.13'
L161	N 00°16'40\"	4229.89'
L162	S 89°42'25\"	1373.13'
L163	N 00°16'40\"	4229.89'
L164	S 89°42'25\"	1373.13'
L165	N 00°16'40\"	4229.89'
L166	S 89°42'25\"	1373.13'
L167	N 00°16'40\"	4229.89'
L168	S 89°42'25\"	1373.13'
L169	N 00°16'40\"	4229.89'
L170	S 89°42'25\"	1373.13'

CURVE	DEGREE	OF CURVE	RADIUS	DELTA ANGLE	CHORD BEARING	CHORD LENGTH	ARC LENGTH
C1	2°59'59\"		1910.08'	12°03'17\"	N 06°50'02\" E	401.13'	401.87'



HOOD	E. CAMPBELL	142	21,990
HOOD	J. YBARBO	748	113,577
HOOD	L. DE ZAVALLA	613	679,082
HOOD	S. COCKRELL	87	1,225,606
HOOD	D. GONZALES	192	18,082
PARKER	E. CAMPBELL	302	10,102
PARKER	S. COCKRELL	219	524,484
PARKER	L. DE ZAVALLA	1,698	328,130
PARKER	J. YBARBO	613	38,707
TOTAL ACRES			2,958,860

**WORKING SKETCH**

OF A 2958.860 ACRES TRACT OF LAND OUT OF THE E. CAMPBELL SURVEY, ABSTRACT NO. 142, THE J. YBARBO SURVEY, ABSTRACT NO. 748, THE L. DE ZAVALLA SURVEY, ABSTRACT NO. 613, THE S. COCKRELL SURVEY, ABSTRACT NO. 87, AND THE D. GONZALES SURVEY, ABSTRACT NO. 192, ALL IN HOOD COUNTY, TEXAS, AND THE E. CAMPBELL SURVEY, ABSTRACT NO. 302, THE J. YBARBO SURVEY, ABSTRACT NO. 2659, THE L. DE ZAVALLA SURVEY, ABSTRACT NO. 1698, AND THE S. COCKRELL SURVEY, ABSTRACT NO. 219, ALL IN PARKER COUNTY, TEXAS

PRICE SURVEYING, LP, FIRM #10034200, 213 S DAK AVE, MINERAL WELLS, TX 76067  
 940-325-4841 JN23776 23776A.dwg 19693.crd

BEARING BASIS: TEXAS STATE PLANE COORDINATE SYSTEM, NAD83 NORTH CENTRAL TX ZONE, US SURVEY FOOT  
 NOTE: ALL DISTANCES ARE SURFACE DISTANCES  
 NOTE: A PORTION OF THIS TRACT IS IN A FLOOD ZONE ACCORDING TO FIRM MAP NO. 48221C0050D, DATED AUGUST 16, 2016, AND FIRM MAP NO. 48221C0075E, DATED APRIL 5, 2019, BOTH IN HOOD COUNTY AND FIRM MAP NO.'S 48367C0500F & 48367C0525F, BOTH DATED APRIL 5, 2019, BOTH IN PARKER COUNTY  
 SET = SET 1/2" IRON ROD WITH CAP (PRICE SURVEYING)  
 NOTE: ALL CORNERS ALONG THE BRAZOS RIVER, COTTONWOOD CREEK AND RED BANK CREEK ARE CALLED POINTS UNLESS OTHERWISE NOTED

NOTE: EASEMENTS ADDRESSED ARE ONLY THOSE LISTED IN GF NO. W2230430 FROM FIDELITY NATIONAL TITLE INSURANCE COMPANY WITH AN ISSUED DATE OF AUGUST 4, 2023

SUBJECT TO:  
 BRAZOS RIVER TRANSMISSION ELECTRIC COOP., INC. V. 1339, P. 963 HOOD CO. (SHOWN ON PLAT) V. 1514, P. 505 PARKER CO. (SHOWN ON PLAT)  
 MEG TEXAS GAS SERVICE, L.P. V. 2221, P. 830 HOOD CO. (SHOWN ON PLAT) V. 2298, P. 393 HOOD CO. (SHOWN ON PLAT)  
 BOUNDARY LINE AGREEMENT V. 85, P. 192 HOOD CO. (SHOWN ON PLAT)  
 3.437 ACRES EASEMENT FOR ACCESS TO 240,000 ACRES TRACT COITONWOOD CREEK AND RED BANK CREEK ARE CALLED POINTS UNLESS OTHERWISE NOTED (SHOWN ON PLAT)

