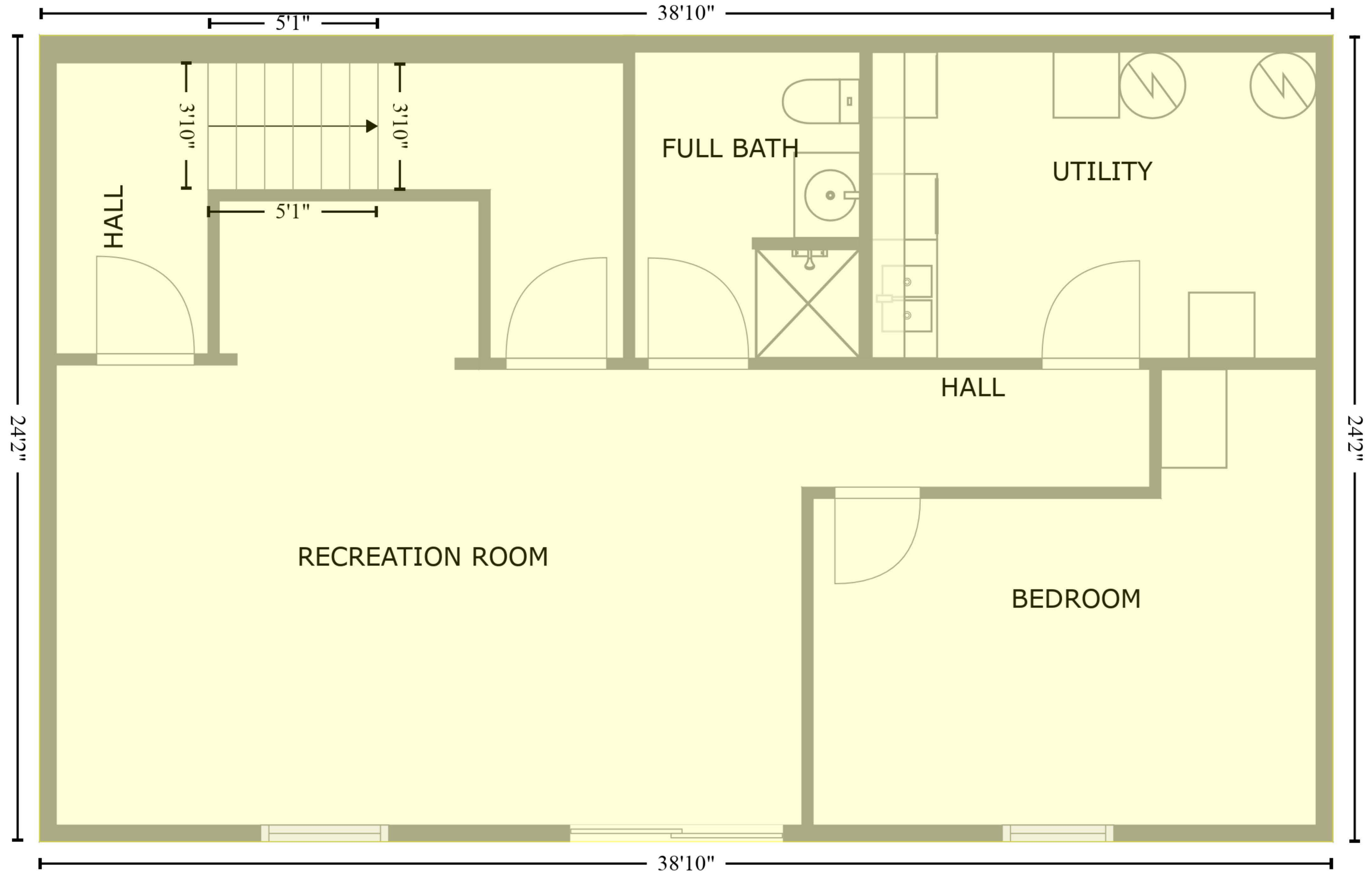


# 2316 NC-63 | Hot Springs, NC 28743

## EXTERNAL MEASUREMENTS

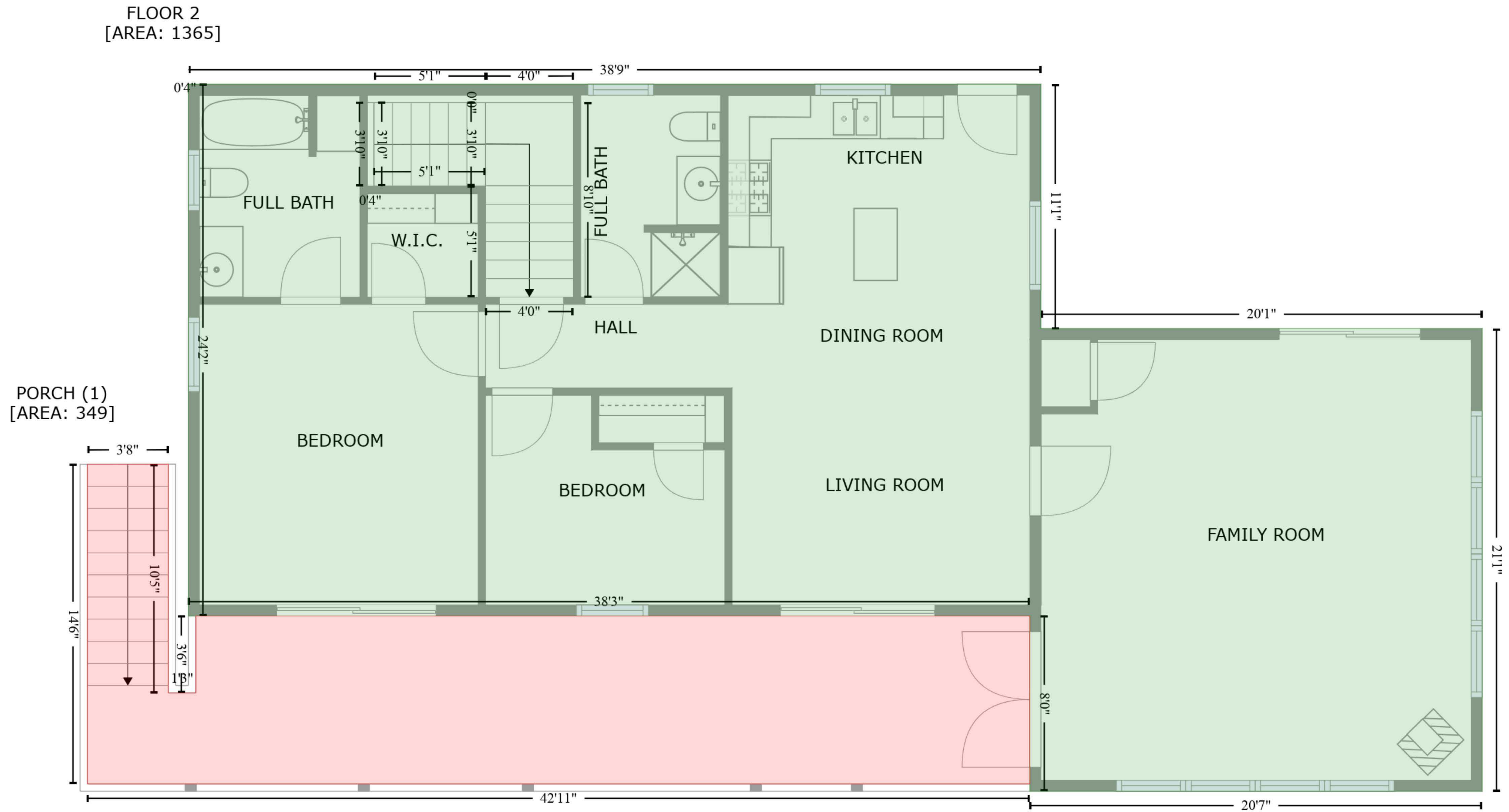
FLOOR 1  
[AREA: 939]



This floor plan holds ANSI certification and was created by a service professional, not a licensed appraiser. The measurements are computed using CubiCasa Technology, recognized as highly reliable but Not Guaranteed.

# 2316 NC-63 | Hot Springs, NC 28743

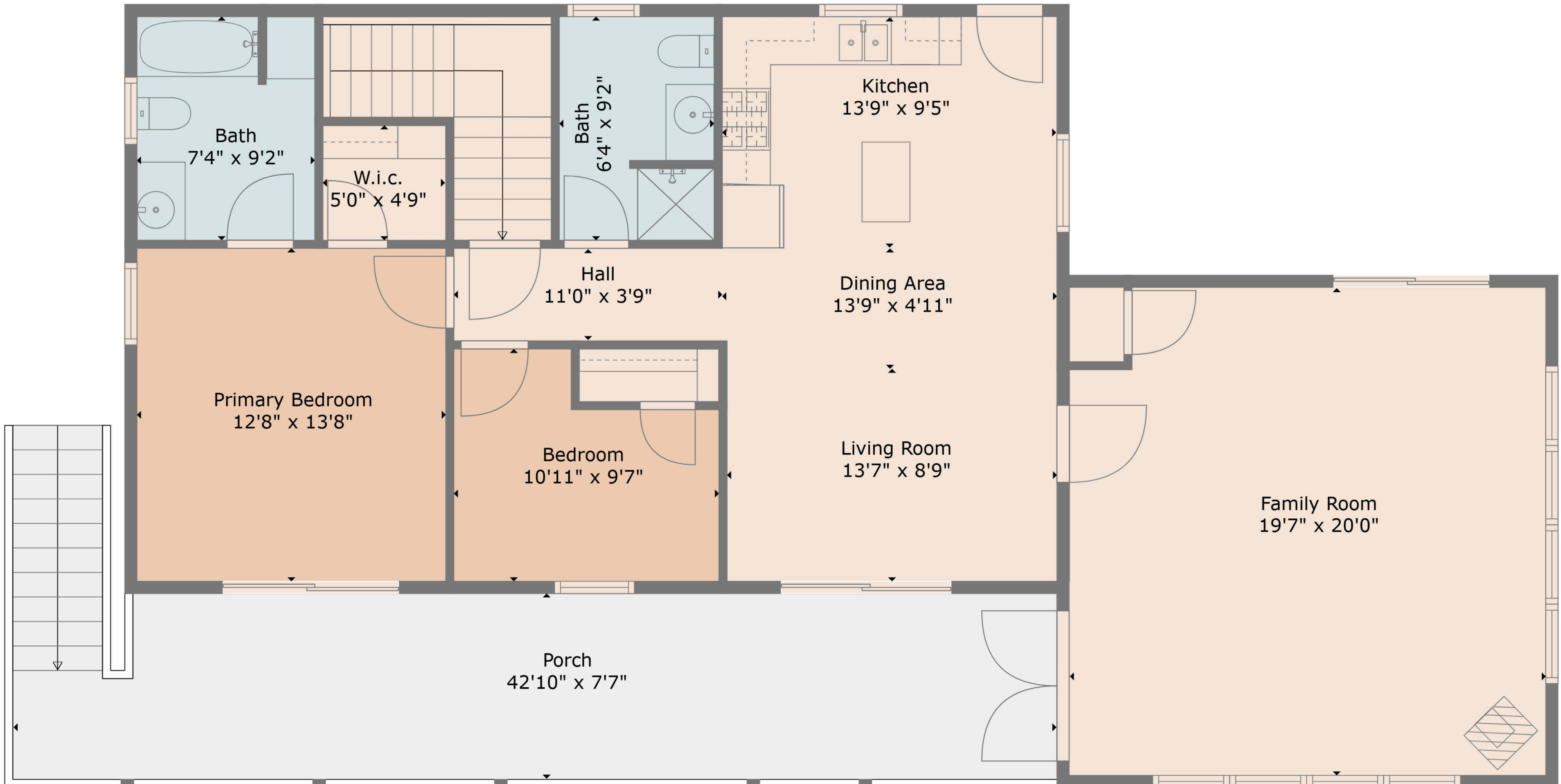
## EXTERNAL MEASUREMENTS



This floor plan holds ANSI certification and was created by a service professional, not a licensed appraiser. The measurements are computed using CubiCasa Technology, recognized as highly reliable but Not Guaranteed.

# 2316 NC-63 | Hot Springs, NC 28743

## INTERNAL MEASUREMENTS



**TOTAL: 2148 sq. ft**

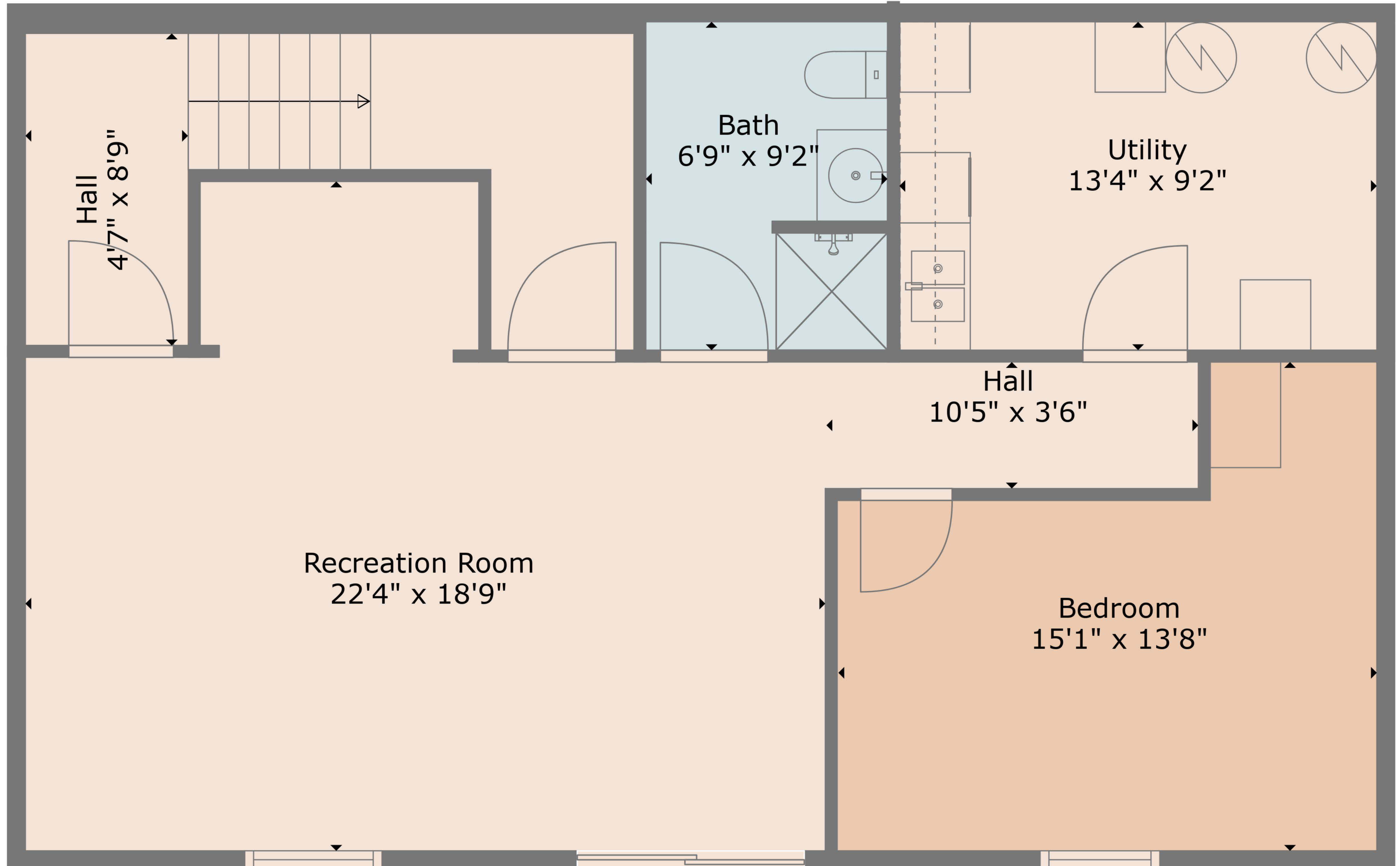
BELOW GROUND: 872 sq. ft, FLOOR 2: 1276 sq. ft

EXCLUDED AREAS: PORCH: 349 sq. ft

This floor plan holds ANSI certification and was created by a service professional, not a licensed appraiser. The measurements are computed using CubiCasa Technology, recognized as highly reliable but Not Guaranteed.

# 2316 NC-63 | Hot Springs, NC 28743

## INTERNAL MEASUREMENTS



**TOTAL: 2148 sq. ft**

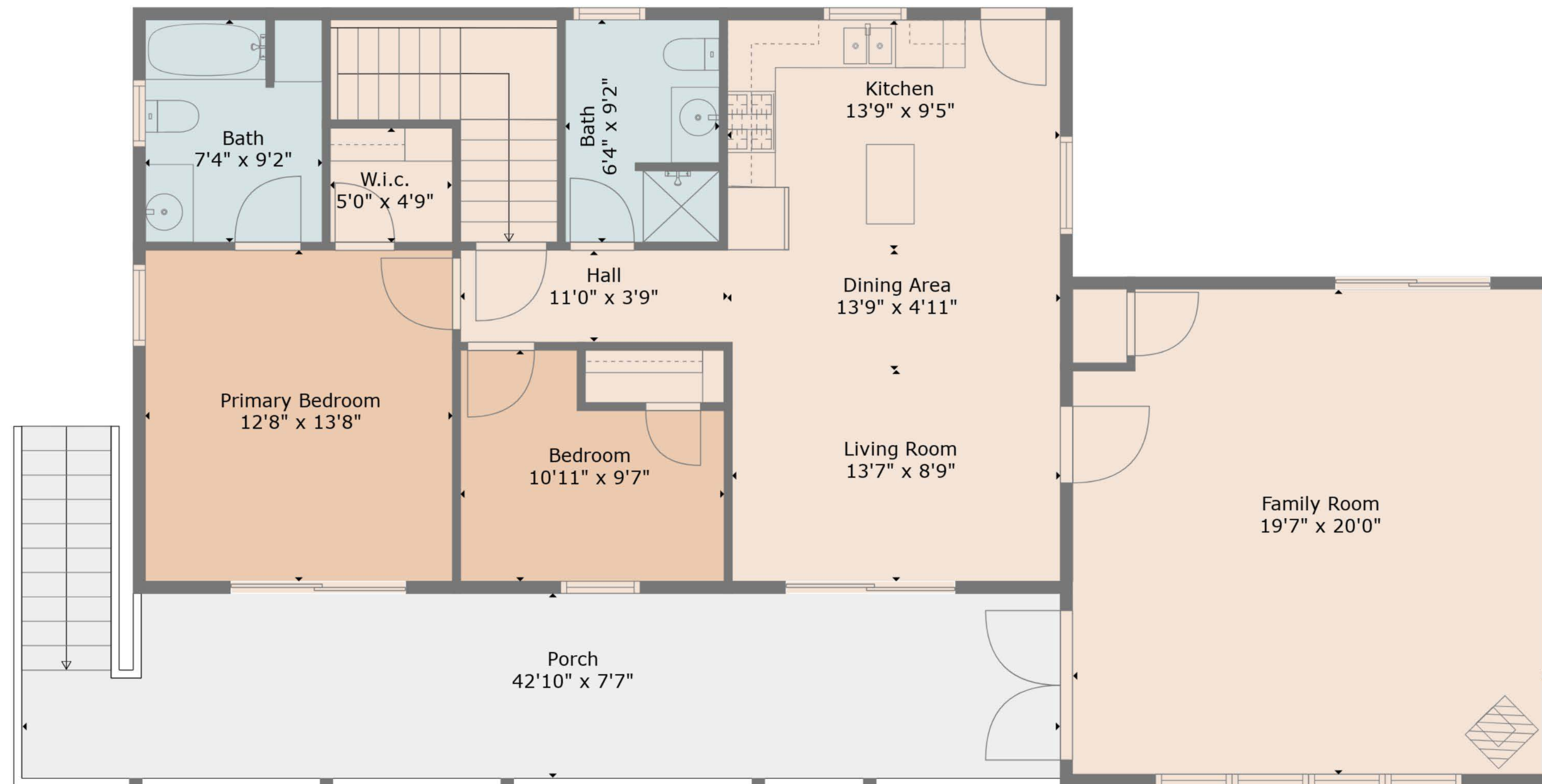
BELOW GROUND: 872 sq. ft, FLOOR 2: 1276 sq. ft

EXCLUDED AREAS: PORCH: 349 sq. ft

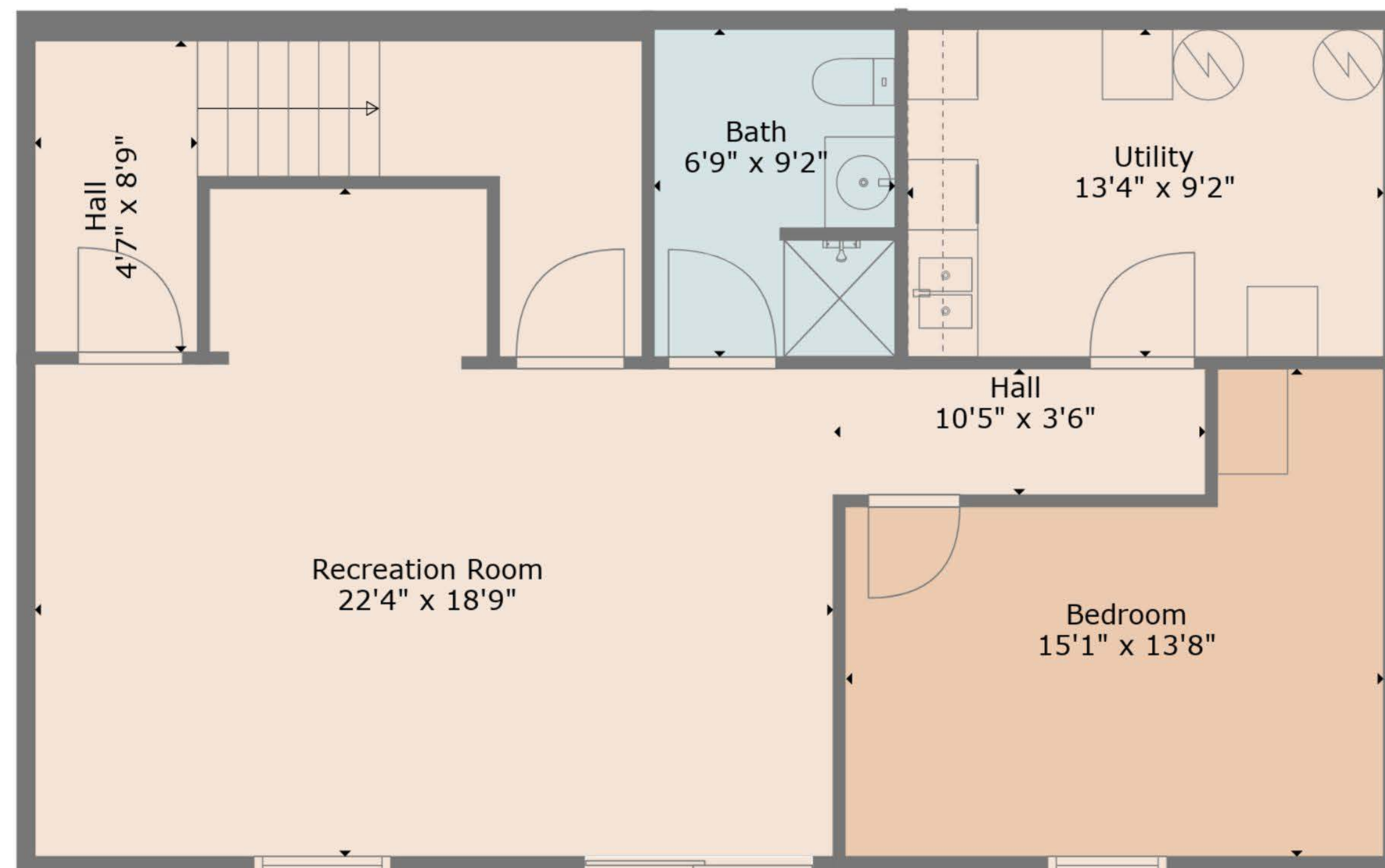
This floor plan holds ANSI certification and was created by a service professional, not a licensed appraiser.  
The measurements are computed using CubiCasa Technology, recognized as highly reliable but Not Guaranteed.

# 2316 NC-63 | Hot Springs, NC 28743

## INTERNAL MEASUREMENTS



Floor 2



Floor 1

**TOTAL: 2148 sq. ft**  
BELOW GROUND: 872 sq. ft, FLOOR 2: 1276 sq. ft  
EXCLUDED AREAS: PORCH: 349 sq. ft

This floor plan holds ANSI certification and was created by a service professional, not a licensed appraiser. The measurements are computed using CubiCasa Technology, recognized as highly reliable but Not Guaranteed.