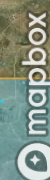
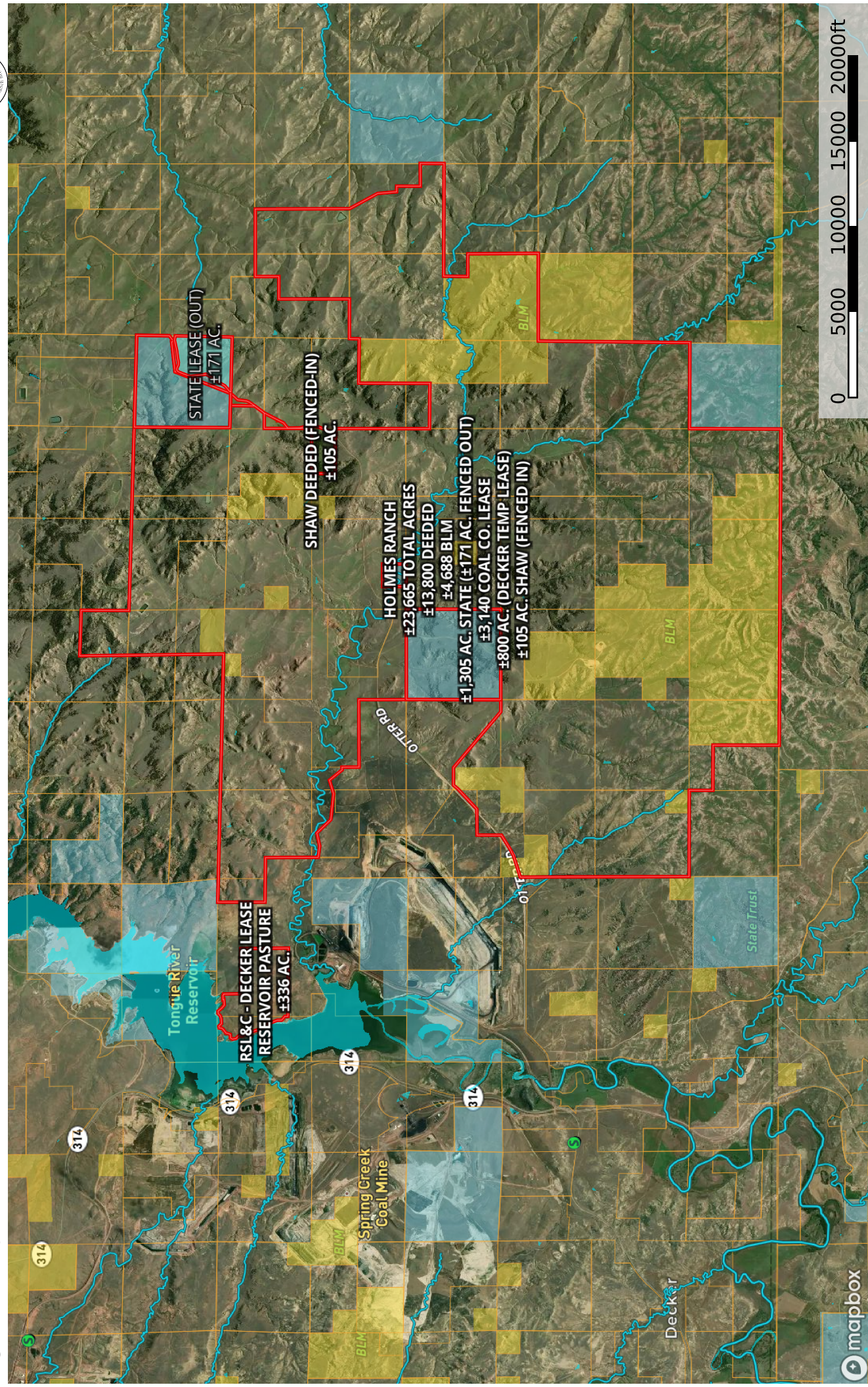




Holmes Ranch

Big Horn County, Montana, 23665 AC +/-



- Shaw deeded (fenced-in)
- Holmes Ranch Substations
- Water Body
- RSL & C - State 1
- RSL & C - State
- RSL & C - Decker Lease
- Forest Service
- State Land
- Fish and Wildlife
- National Park
- Other
- BLM
- Local Government
- Stream, Intermittent
- River/Creek