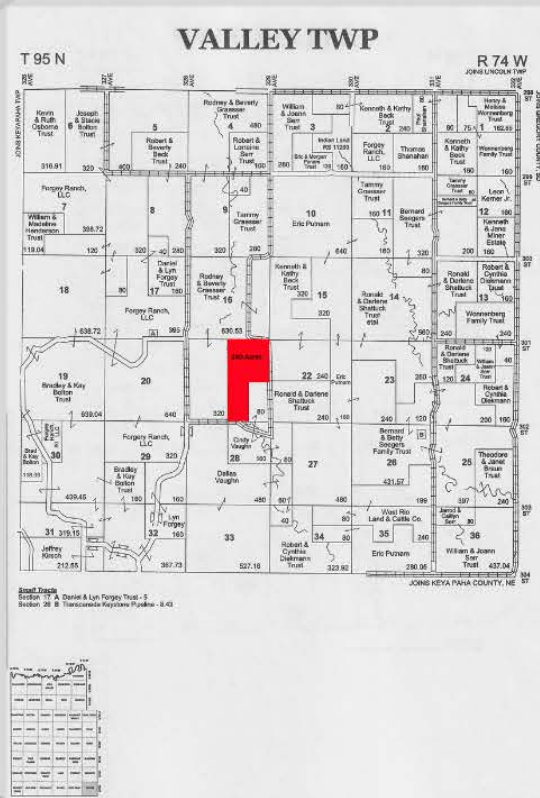


240 (+/-) acres of pasture land with 2 dams and 51 (+/- acres) planted to alfalfa grass with an average soil productivity of 36.24.



# 240 ACRES OF PASTURELAND

for sale:  
3500/acre

CONTACT US  
605-842-3212  
439 E 2ND STREET, WINNER, SD

shippyrealty.com

# SHIPPY REALTY

## & AUCTION

605-842-3212