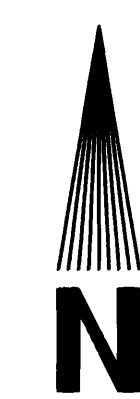


RECORD OF SURVEY
 LOCATED IN
 SW 1/4 SECTION 23, T15S, R1W, W.M.
 LANE COUNTY, OREGON
 FOR
 WEYERHAEUSER COMPANY
 BY
 ROBERTS SURVEYING INC.
 P.O. BOX 7155
 EUGENE, OREGON 97401
 PHONE (541) 345-1112



SCALE: 1" = 100'
 MAY 23, 2008

REGISTERED
 PROFESSIONAL
 LAND SURVEYOR
Ted C. Baker
 OREGON
 JULY 25, 1991
 TED C. BAKER
 2488
 EXPIRES 12-31-09

LEGEND

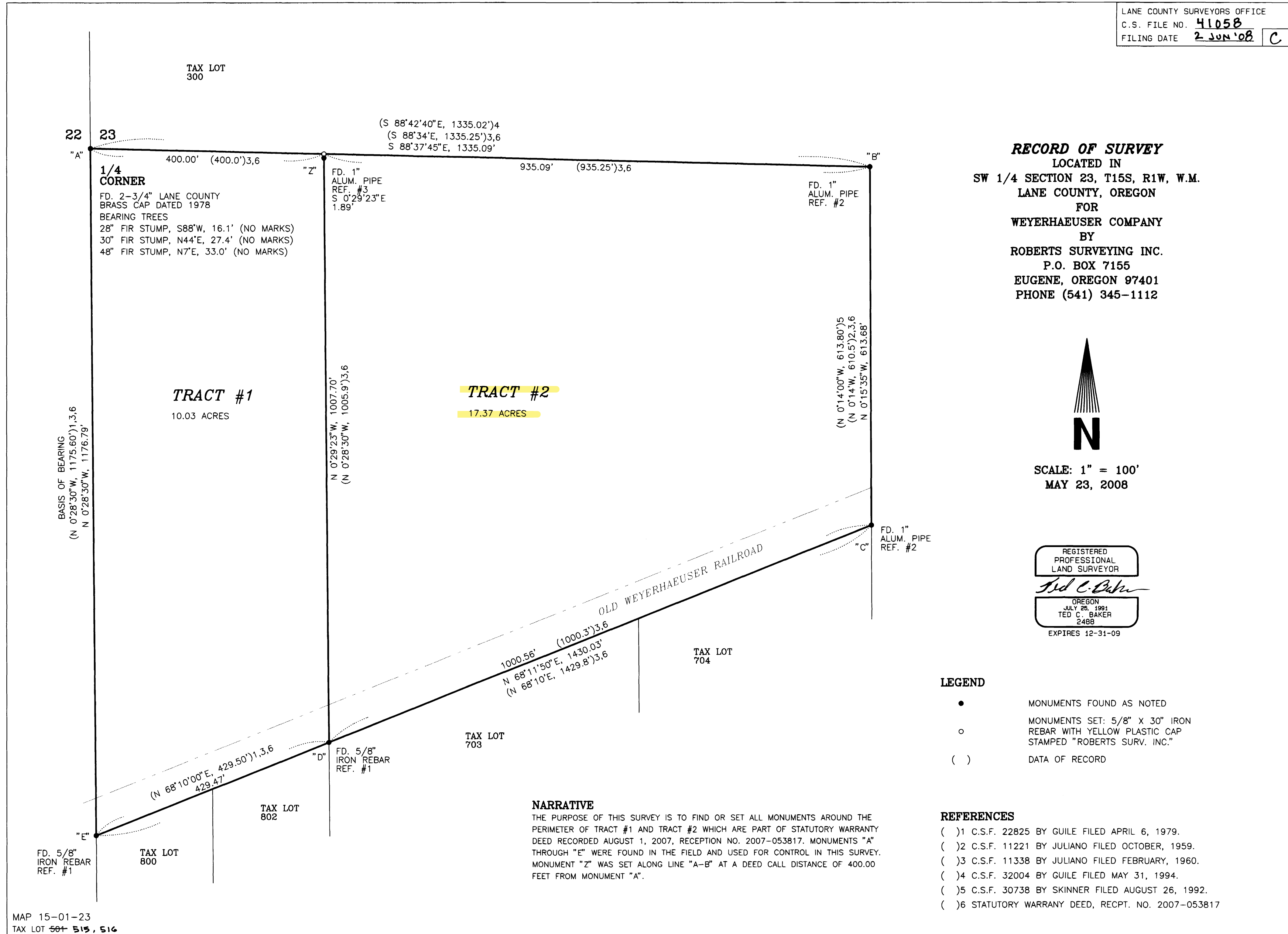
- MONUMENTS FOUND AS NOTED
- MONUMENTS SET: 5/8" X 30" IRON REBAR WITH YELLOW PLASTIC CAP STAMPED "ROBERTS SURV. INC."
- () DATA OF RECORD

REFERENCES

- () 1 C.S.F. 22825 BY GUILLE FILED APRIL 6, 1979.
- () 2 C.S.F. 11221 BY JULIANO FILED OCTOBER, 1959.
- () 3 C.S.F. 11338 BY JULIANO FILED FEBRUARY, 1960.
- () 4 C.S.F. 32004 BY GUILLE FILED MAY 31, 1994.
- () 5 C.S.F. 30738 BY SKINNER FILED AUGUST 26, 1992.
- () 6 STATUTORY WARRANTY DEED, RECPT. NO. 2007-053817

NARRATIVE

THE PURPOSE OF THIS SURVEY IS TO FIND OR SET ALL MONUMENTS AROUND THE PERIMETER OF TRACT #1 AND TRACT #2 WHICH ARE PART OF STATUTORY WARRANTY DEED RECORDED AUGUST 1, 2007, RECEPTION NO. 2007-053817. MONUMENTS "A" THROUGH "E" WERE FOUND IN THE FIELD AND USED FOR CONTROL IN THIS SURVEY. MONUMENT "Z" WAS SET ALONG LINE "A-B" AT A DEED CALL DISTANCE OF 400.00 FEET FROM MONUMENT "A".



MAP 15-01-23
 TAX LOT 501, 515, 516