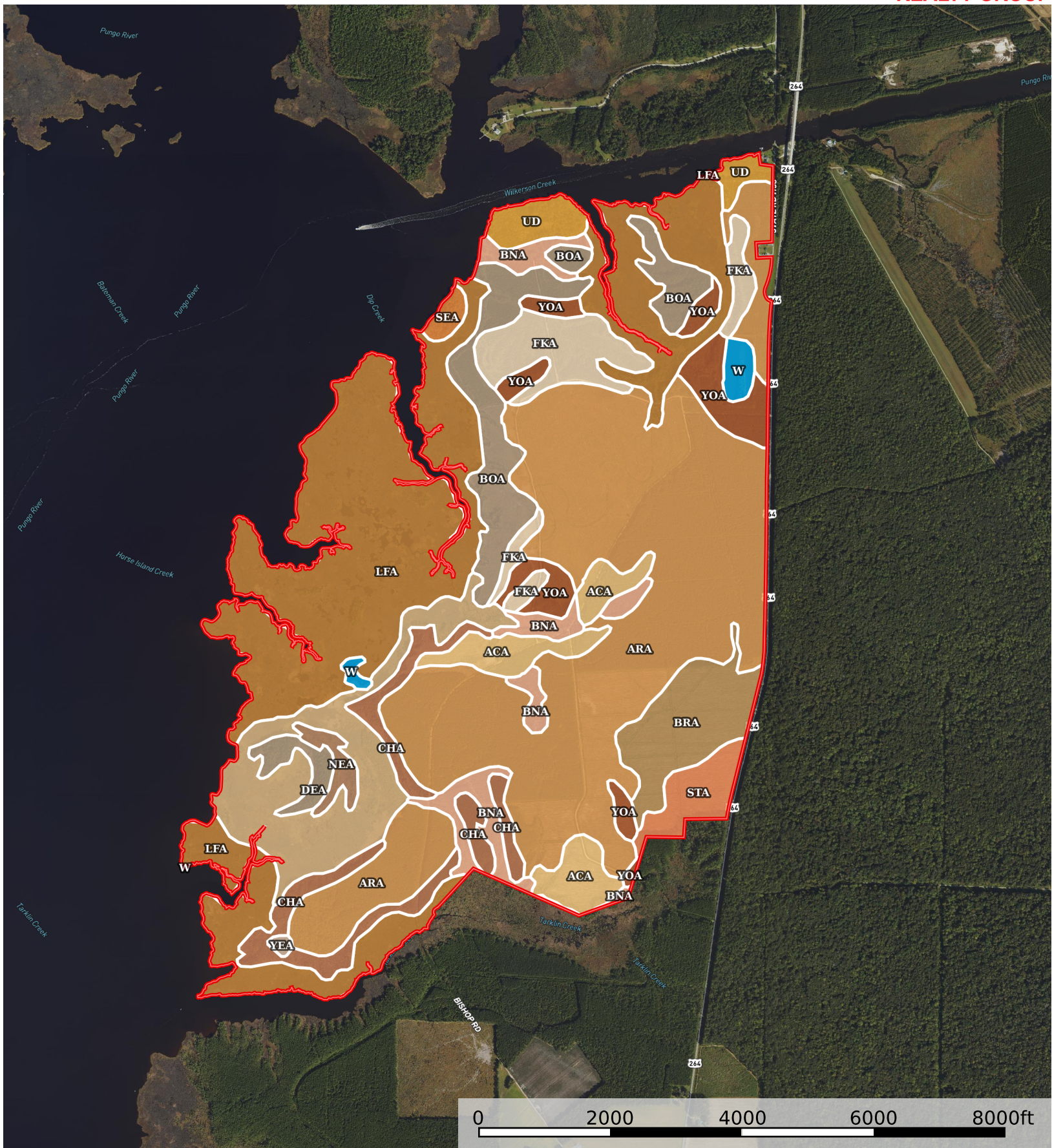


1726 Acres in Hyde County

Hyde County, North Carolina, 1726 AC +/-



Boundary

|  Boundary 1735.37 ac

SOIL CODE	SOIL DESCRIPTION	ACRES	%	CPI	NCCPI	CAP
ArA	Argent loam, 0 to 2 percent slopes, rarely flooded	560.0 6	32.27	0	80	3w
LfA	Longshoal mucky peat, 0 to 1 percent slopes, very frequently flooded	466.4 7	26.88	0	9	8w
DeA	Delway muck, 0 to 1 percent slopes, very frequently flooded	122.0 2	7.03	0	4	8w
BoA	Bolling loamy fine sand, 0 to 3 percent slopes, rarely flooded	107.8 3	6.21	0	82	2w
ChA	Chapanoke silt loam, 0 to 2 percent slopes, rarely flooded	71.43	4.12	0	80	2w
FkA	Fork fine sandy loam, 0 to 2 percent slopes, rarely flooded	71.21	4.1	0	78	3w
BrA	Brookman loam, 0 to 2 percent slopes, rarely flooded	65.08	3.75	0	81	3w
YoA	Yonges loam, 0 to 2 percent slopes, rarely flooded	62.51	3.6	0	79	3w
AcA	Acredale silt loam, 0 to 2 percent slopes, rarely flooded	60.42	3.48	0	81	3w
BnA	Belhaven muck, 0 to 2 percent slopes, frequently flooded	56.14	3.23	0	15	7w
Ud	Udorthents, sandy, rarely flooded	29.04	1.67	0	24	7s
StA	Stockade mucky sandy loam, 0 to 2 percent slopes, rarely flooded	28.22	1.63	0	82	3w
W	Water	14.42	0.83	0	-	8
NeA	Newholland mucky loamy sand, 0 to 2 percent slopes, rarely flooded	11.51	0.66	0	70	3w
SeA	Seabrook fine sand, 0 to 3 percent slopes, rarely flooded	7.04	0.41	0	39	3s
YeA	Yeopim silt loam, 0 to 3 percent slopes, rarely flooded	1.97	0.11	0	81	2w
TOTALS		1735. 37(*)	100%	-	51.74	4.83









(*) Total acres may differ in the second decimal compared to the sum of each acreage soil. This is due to a round error because we only show the acres of each soil with two decimal.

Capability Legend

Increased Limitations and Hazards

Decreased Adaptability and Freedom of Choice Users

Land, Capability

								
	1	2	3	4	5	6	7	8
'Wild Life'	•	•	•	•	•	•	•	•
Forestry	•	•	•	•	•	•	•	
Limited	•	•	•	•	•	•	•	
Moderate	•	•	•	•	•	•		
Intense	•	•	•	•	•			
Limited	•	•	•	•				
Moderate	•	•	•					
Intense	•	•						
Very Intense	•							

Grazing Cultivation

(c) climatic limitations (e) susceptibility to erosion

(s) soil limitations within the rooting zone (w) excess of water