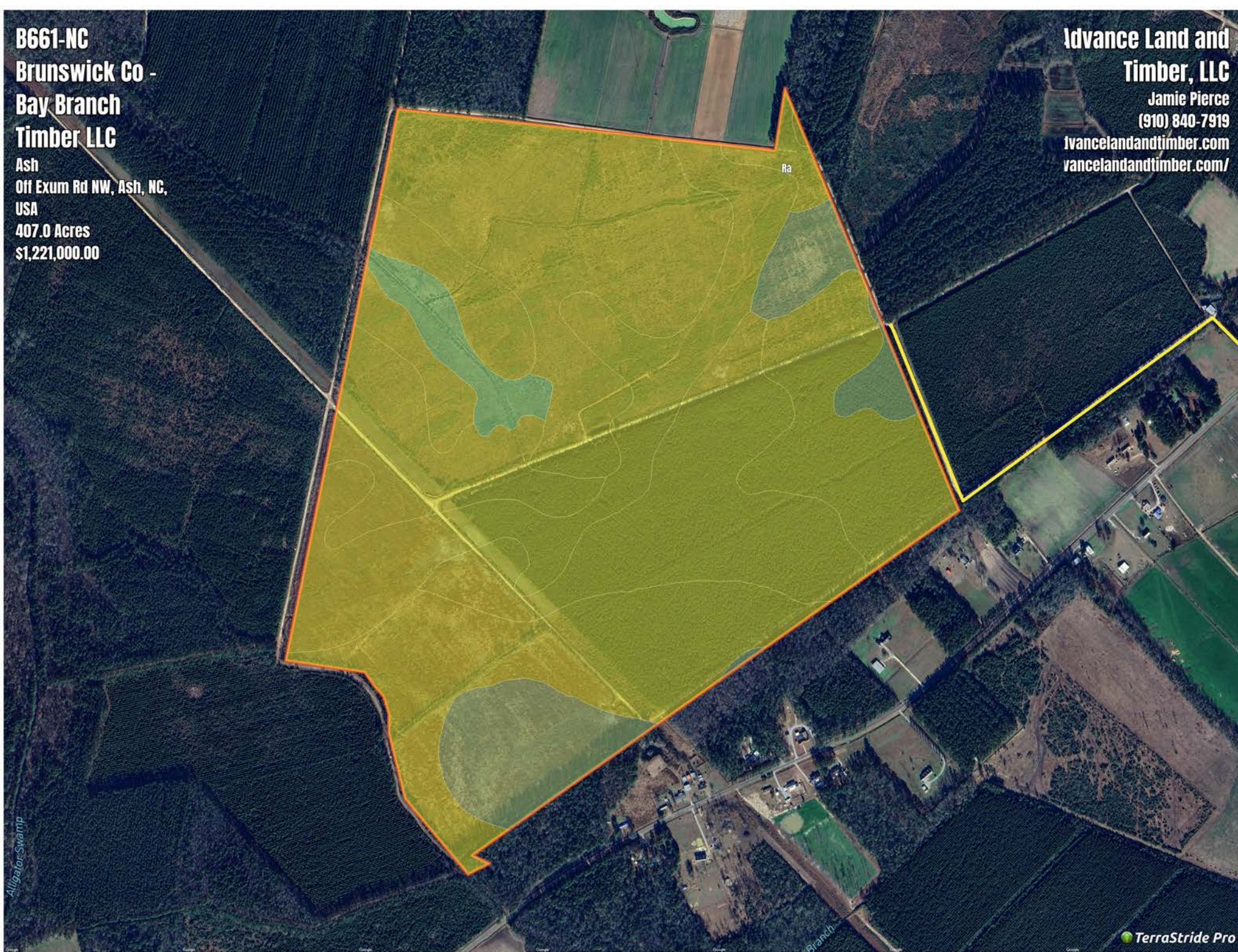


**B661-NC  
Brunswick Co -  
Bay Branch  
Timber LLC**

Ash  
Off Exum Rd NW, Ash, NC,  
USA  
407.0 Acres  
\$1,221,000.00

**Advance Land and  
Timber, LLC**

Jamie Pierce  
(910) 840-7919  
[vancelandandtimber.com](http://vancelandandtimber.com)  
[vancelandandtimber.com/](http://vancelandandtimber.com/)



Alligator Swamp

Branch

# B661-NC Brunswick Co - Bay Branch Timber LLC

## Soil Report

| Symbol | Map Unit Description       | Farmland class                   | Area (AC) | Available Water Storage (0-150cm - Weighted Average) | Flooding Frequency (Maximum) | Drainage Class (Dominant Condition) | Drainage Class (Wettest Component) | Hydric Classification | Water Table Depth (Annual Minimum) | Water Table Depth (April to June Minimum) | Bedrock Depth (Minimum) | Soil Order |
|--------|----------------------------|----------------------------------|-----------|--|------------------------------|-------------------------------------|------------------------------------|-----------------------|------------------------------------|---|-------------------------|------------|
| Ra     | Rains fine sandy loam      | Prime farmland if drained        | 0         | 23.6   | None                         | Poorly drained                      | Poorly drained                     | 90                    | 15                                 | 46  | 0                       | Ultisols   |
| Pn     | Pantego mucky loam         | Prime farmland if drained        | 0         | 29.1   | None                         | Very poorly drained                 | Very poorly drained                | 90                    | 0                                  | 81  | 0                       | Ultisols   |
| Fo     | Foreston loamy fine sand   | Farmland of statewide importance | 0         | 15.3   | None                         | Moderately well drained             | Moderately well drained            | 5                     | 61                                 | 91  | 0                       | Ultisols   |
| Gt     | Grifton fine sandy loam    | Prime farmland if drained        | 0         | 20.7   | None                         | Poorly drained                      | Poorly drained                     | 90                    | 0                                  | 15  | 0                       | Alfisols   |
| Wo     | Woodington fine sandy loam | Prime farmland if drained        | 0         | 19.5   | None                         | Poorly drained                      | Poorly drained                     | 90                    | 15                                 | 81  | 0                       | Ultisols   |
| Ly     | Lynchburg fine sandy loam  | Prime farmland if drained        | 0         | 18.8   | None                         | Somewhat poorly drained             | Somewhat poorly drained            | 7                     | 15                                 | 76  | 0                       | Ultisols   |
| Mk     | Muckalee loam              | Not prime farmland               | 0         | 16.2   | Frequent                     | Poorly drained                      | Poorly drained                     | 80                    | 15                                 | 23  | 0                       | Entisols   |
| Tm     | Tomahawk loamy fine sand   | Farmland of statewide importance | 0         | 12.6   | None                         | Moderately well drained             | Moderately well drained            | 7                     | 61                                 | 76  | 0                       | Ultisols   |