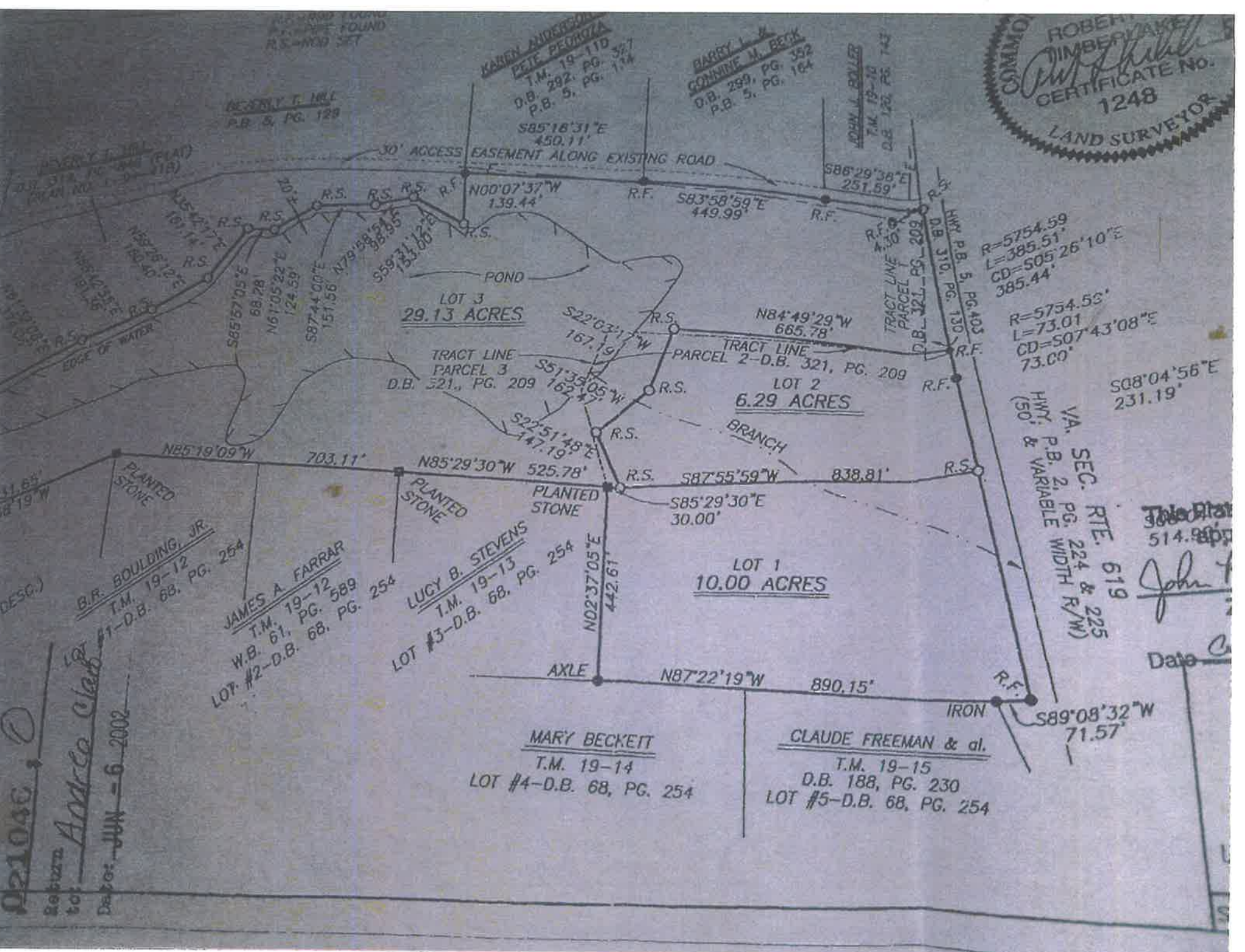


021046, 0
Return to Annee Clark
Date JUN - 6 2002



DEWEY T. MILL
P.B. 5, PG. 129

KAREN ANDERSON
PETE PEDROZA
T.M. 19-11D
D.B. 292, PG. 327
P.B. 5, PG. 124

BARRY L. &
CONNIE M. BETH
D.B. 299, PG. 352
P.B. 5, PG. 164

JOHN A. BULLER
T.M. 19-16
D.B. 120, PG. 743

R=5754.59
L=385.51
CD=505'26'10\"/>

R=5754.59
L=73.01
CD=507'43'08\"/>

S08°04'56\"/>
231.19'

VA. SEC. RTE. 619
P.B. 2, PG. 224 & 225
HMT. & VARIABLE WIDTH R/W
(50)

This Plat
514.88'

John

Date

MARY BECKETT
T.M. 19-14
LOT #4-D.B. 68, PG. 254

CLAUDE FREEMAN & al.
T.M. 19-15
D.B. 188, PG. 230
LOT #5-D.B. 68, PG. 254

JAMES A. FARRAR
T.M. 19-12
W.B. 61, PG. 589
LOT #2-D.B. 68, PG. 254

LUCY B. STEVENS
T.M. 19-13
LOT #3-D.B. 68, PG. 254

B.R. BOULDING, JR.
T.M. 19-12
LOT #1-D.B. 68, PG. 254