

LAND FOR SALE

80 Acres Clay County

Section 28 Logan Township



Productive cropland and CRP acres

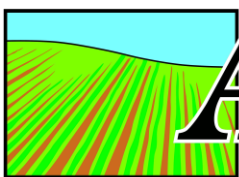
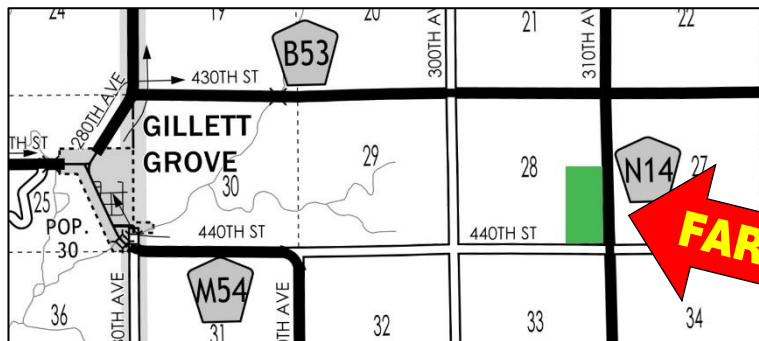
- Attractive gently rolling farm on N14
- 71.7 FSA crop acres including 14.4 acres CRP
- Productive soils CSR2 78.5
- CRP: 13.6 ac @ \$225/acre, 0.8 ac @ \$324/acre
- RE Taxes: \$2192

Price: \$740,000.00 \$9250/acre

For more information call

Jon Hjelm 712-240-3529 or Chuck Sikora 712-260-2788

A farmland investment with top bird hunting!



ACRE CO

Farm Real Estate

Spencer, IA 712-262-3529

Selling Iowa's Best

Jon Hjelm, ALC 712-240-3529

Chuck Sikora 712-260-2788

Austin Peterson 712-260-3678

Joe Laubenthal 515-368-3815

theacreco.com

Information contained herein is gathered from sources deemed reliable but cannot be guaranteed by The ACRE Co.