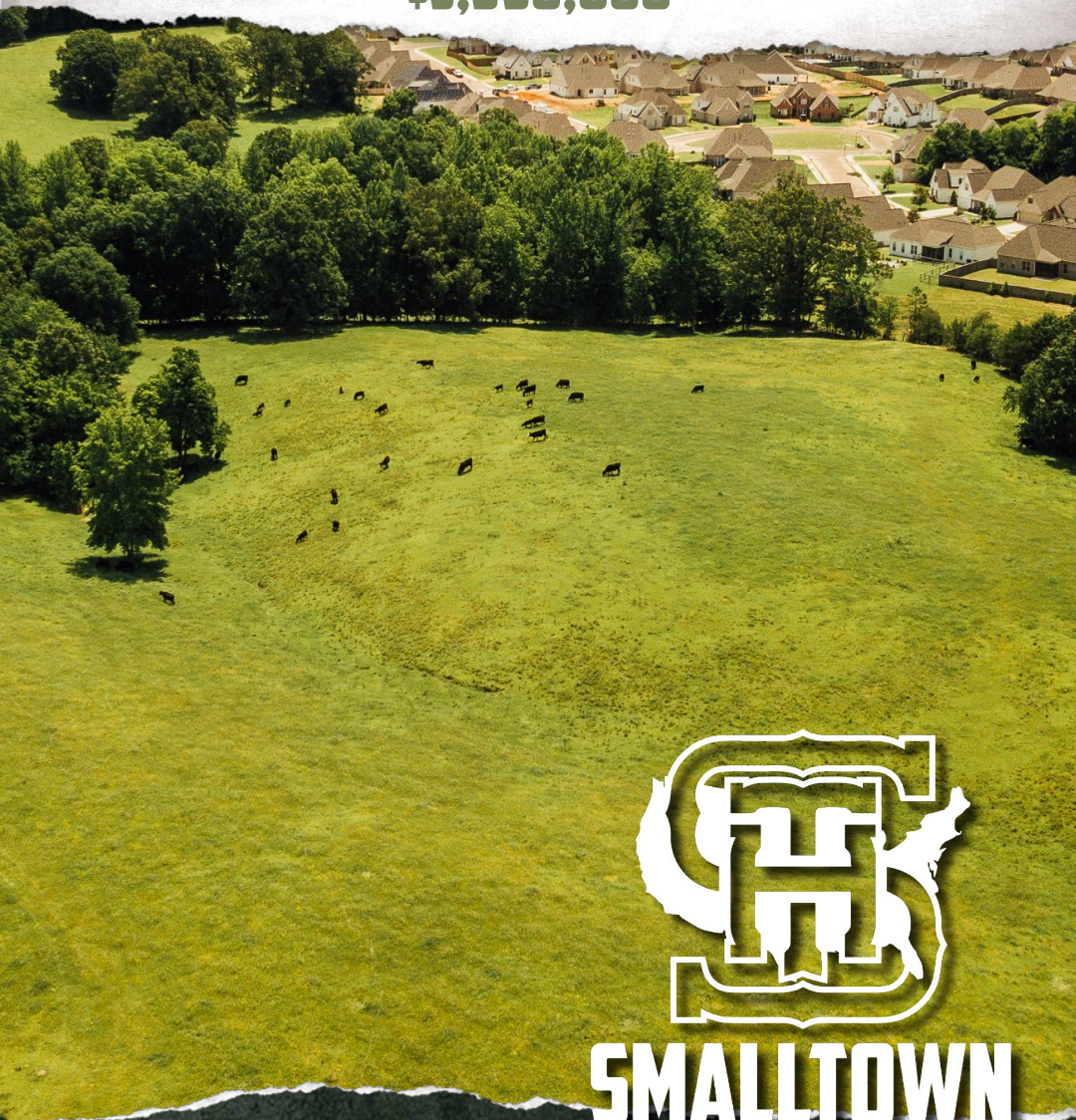


86± ACRES WITH A HOME LAFAYETTE COUNTY, MS

\$3,990,000



SMALLTOWN
HUNTING PROPERTIES
& REAL ESTATESM

OFFICE (769) 888-2522

THE LAFAYETTE 86

PROPERTY PROFILE

LOCATION:

- Lafayette County, MS
- 492 County Road 101
Oxford, MS 38655
- Approximately 1.70 Miles
N of Oxford City Limits

COORDINATES:

- 34.41837, -89.52057

PROPERTY USE:

- Homesite
- Development Opportunity
- Investment

TAX INFORMATION:

2023 - \$397

- Parcel 1#: 132X-04-003.00
- Parcel 2#: 132X-04-003.01

PROPERTY INFORMATION:

- 86± Acres
- 900± Frontage Feet
Along County Road 101
- 1,454 SqFt
- 3 Bedrooms, 2 Baths
- Enclosed Shop
- Rolling Pasture with
Hardwood Timber Draws
- Large Lake Site
- Oxford City School District
- Currently Agricultural Zoning
- Utilities Provided by Northeast
Mississippi EPA, City of
Oxford Community Water
- City Sewer in Close Proximity



SMALLTOWN
HUNTING PROPERTIES
& REAL ESTATESM

MICHAEL OSWALT, ALC

PRINCIPAL BROKER


C: 662-719-3967

O: 769-888-2522

michael@smalltownproperties.com

4848 Main St. - Flora, MS 39071

smalltownproperties.com

 /21,000+ Followers

Information is believed to be accurate but not guaranteed.

WELCOME TO THE LAFAYETTE 86

WELCOME TO YOUR NEW DEVELOPMENT OPPORTUNITY JUST 3.5 MILES NORTH OF THE OXFORD SQUARE IN LAFAYETTE COUNTY, MS. The property is made up of 86± acres of rolling pasture with a couple of hardwood timber draws, three ponds, and a creek traversing from the north to south. Additionally, you will find three ponds with a topography that lends itself to a large lake site if the soil is suitable. The current utilities include power (Northeast Mississippi EPA), community water (City of Oxford), and septic sewer (city sewer looks to be approximately 770 feet south of the property). The property has a little over 900± frontage feet along the east side of County Road 101 and is located just 1.70± miles north of the Oxford City Limits. The property is in the Oxford City School District. You will also find a home and shop on the property. The 1,454± square foot home was constructed in 2016 and features three bedrooms, two bathrooms, an open kitchen/dining/living combo, and a two-car garage. The shop includes an enclosed area with a lean-to area off the side.

If you have been searching for your next development opportunity near Oxford, Mississippi, give Michael Oswalt a call for your private tour of The Lafayette 86.



SMALLTOWN
HUNTING PROPERTIES
& REAL ESTATESM

MICHAEL OSWALT, ALC

PRINCIPAL BROKER


C: 662-719-3967

O: 769-888-2522

michael@smalltownproperties.com

4848 Main St. - Flora, MS 39071

smalltownproperties.com

 /21,000+ Followers

Information is believed to be accurate but not guaranteed.

86± ACRES WITH A HOME

LAFAYETTE COUNTY, MISSISSIPPI



SMALLTOWN
HUNTING PROPERTIES
& REAL ESTATESM

MICHAEL OSWALT, ALC

PRINCIPAL BROKER


C: 662-719-3967

O: 769-888-2522

michael@smalltownproperties.com

4848 Main St. - Flora, MS 39071

smalltownproperties.com

 21,000+ Followers

Information is believed to be accurate but not guaranteed.

86± ACRES WITH A HOME

LAFAYETTE COUNTY, MISSISSIPPI



SMALLTOWN
HUNTING PROPERTIES
& REAL ESTATESM

MICHAEL OSWALT, ALC

PRINCIPAL BROKER

C: 662-719-3967

O: 769-888-2522

michael@smalltownproperties.com

4848 Main St. - Flora, MS 39071

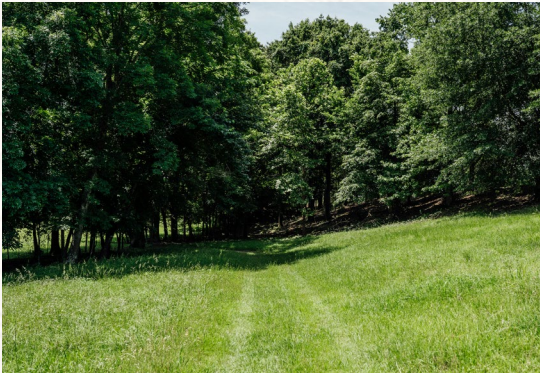
smalltownproperties.com

21,000+ Followers

Information is believed to be accurate but not guaranteed.

86± ACRES WITH A HOME

LAFAYETTE COUNTY, MISSISSIPPI



SMALLTOWN

HUNTING PROPERTIES
& REAL ESTATESM

MICHAEL OSWALT, ALC

PRINCIPAL BROKER


C: 662-719-3967

O: 769-888-2522

michael@smalltownproperties.com

4848 Main St. - Flora, MS 39071

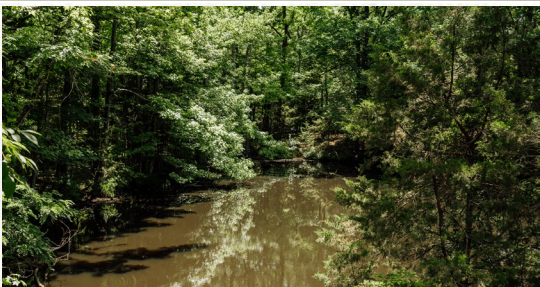
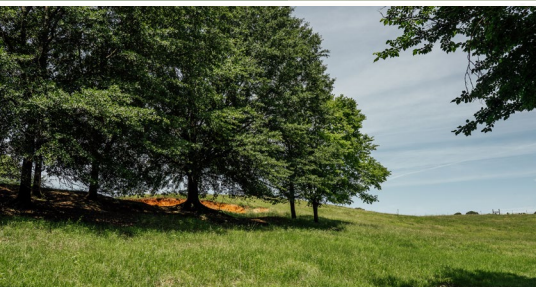
smalltownproperties.com

 21,000+ Followers

Information is believed to be accurate but not guaranteed.

86± ACRES WITH A HOME

LAFAYETTE COUNTY, MISSISSIPPI



SMALLTOWN
HUNTING PROPERTIES
& REAL ESTATESM

MICHAEL OSWALT, ALC

PRINCIPAL BROKER

C: 662-719-3967

O: 769-888-2522

michael@smalltownproperties.com

4848 Main St. - Flora, MS 39071

smalltownproperties.com

21,000+ Followers

Information is believed to be accurate but not guaranteed.

86± ACRES WITH A HOME

LAFAYETTE COUNTY, MISSISSIPPI



SMALLTOWN
HUNTING PROPERTIES
& REAL ESTATESM

MICHAEL OSWALT, ALC

PRINCIPAL BROKER


C: 662-719-3967

O: 769-888-2522

michael@smalltownproperties.com

4848 Main St. - Flora, MS 39071

smalltownproperties.com

 21,000+ Followers

Information is believed to be accurate but not guaranteed.

86± ACRES WITH A HOME

LAFAYETTE COUNTY, MISSISSIPPI



SMALLTOWN

HUNTING PROPERTIES
& REAL ESTATESM

MICHAEL OSWALT, ALC
PRINCIPAL BROKER
C: 662-719-3967
O: 769-888-2522
michael@smalltownproperties.com

4848 Main St. - Flora, MS 39071

smalltownproperties.com

/21,000+ Followers

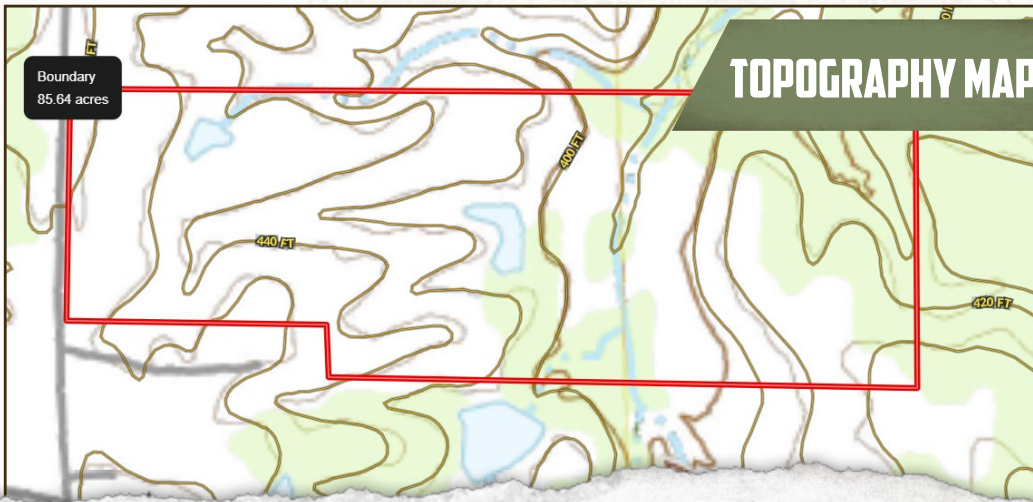
Information is believed to be accurate but not guaranteed.

86± ACRES WITH A HOME

LAFAYETTE COUNTY, MISSISSIPPI



land id. LINK



TOPOGRAPHY MAP



SMALLTOWN
 HUNTING PROPERTIES
 & REAL ESTATESM

MICHAEL OSWALT, ALC
 PRINCIPAL BROKER
 C: 662-719-3967
 O: 769-888-2522
 michael@smalltownproperties.com

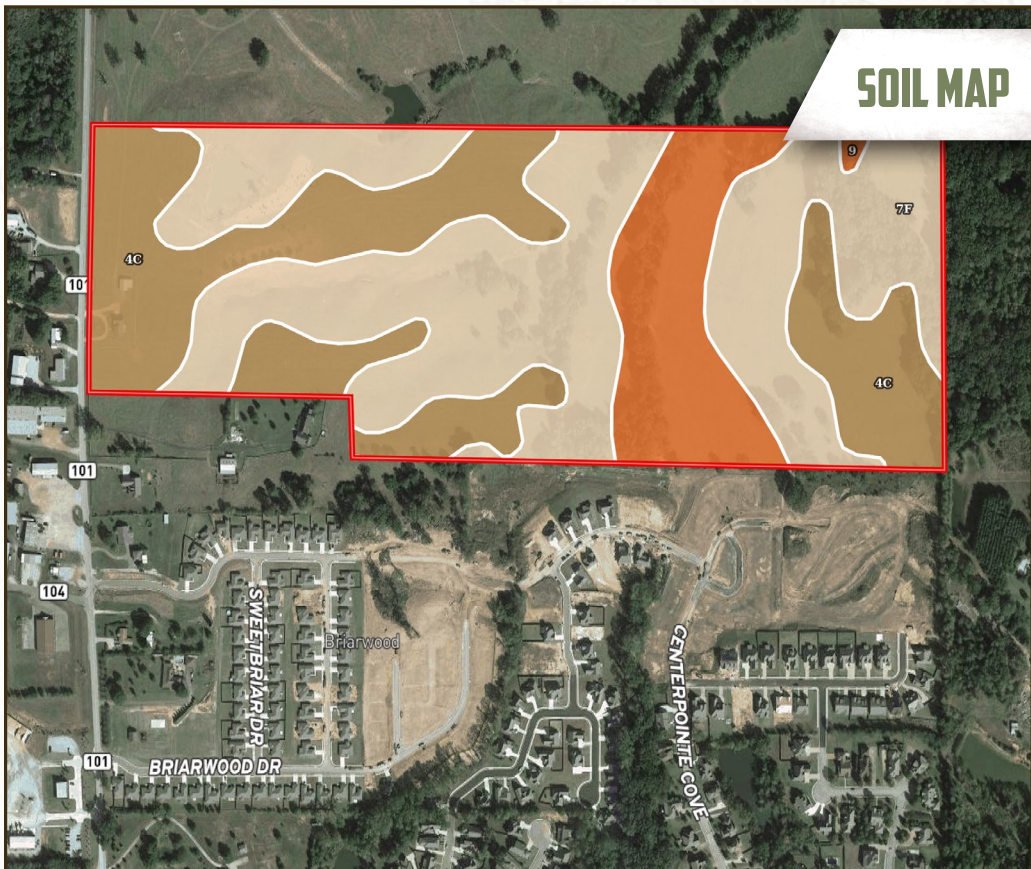
4848 Main St. - Flora, MS 39071

smalltownproperties.com

f/21,000+ Followers

Information is believed to be accurate but not guaranteed.

SOIL MAP



SOIL CODE	SOIL DESCRIPTION	ACRES	%	CPI	NCCPI	CAP
7F	Smithdale sandy loam, 15 to 35 percent slopes, eroded	43.93	51.41	0	16	7e
4C	Loring silt loam, 5 to 8 percent slopes, moderately eroded, central	29.14	34.1	0	48	4e
9	Ochlockonee sandy loam, occasionally flooded	12.38	14.49	0	74	2w
TOTALS		85.45	100%	-	35.32	5.25



SMALLTOWN
HUNTING PROPERTIES
& REAL ESTATESM

MICHAEL OSWALT, ALC

PRINCIPAL BROKER

C: 662-719-3967

O: 769-888-2522

michael@smalltownproperties.com

4848 Main St. - Flora, MS 39071

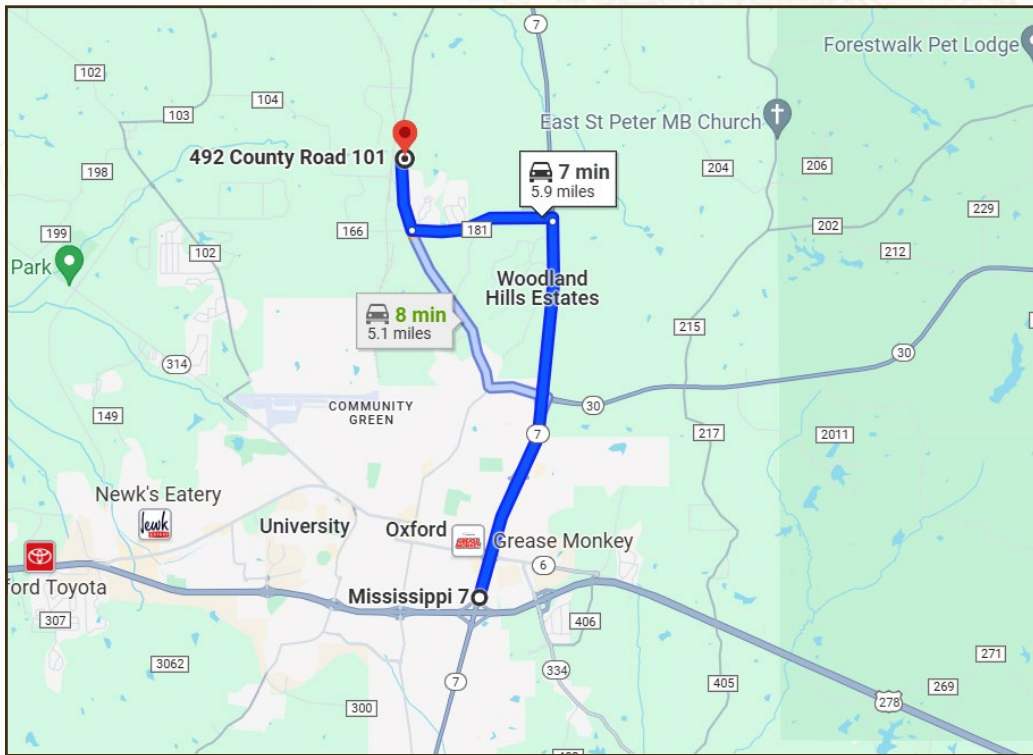
smalltownproperties.com

f/21,000+ Followers

Information is believed to be accurate but not guaranteed.

86± ACRES WITH A HOME

LAFAYETTE COUNTY, MISSISSIPPI



DIRECTIONS FROM THE INTERSECTION OF US HWY 278 AND MS-7 N IN OXFORD, MS: Travel north on MS-7 N for 3.8 miles. Turn left onto Co Rd 1032 and travel for 1.4 miles. Turn right onto Co Rd 101 and travel for 0.7 miles. The destination is on the right. 492 County Road 101, Oxford, MS 38655

[LINK TO GOOGLE MAP DIRECTIONS](#)



SMALLTOWN
HUNTING PROPERTIES
& REAL ESTATESM

MICHAEL OSWALT, ALC

PRINCIPAL BROKER

C: 662-719-3967

O: 769-888-2522

michael@smalltownproperties.com

4848 Main St. - Flora, MS 39071

smalltownproperties.com

21,000+ Followers

Information is believed to be accurate but not guaranteed.