

## 155 ACRES IN CHARLESTON MS

\$302,250.00

155 acres Timber and Recreational property featuring mixed pine and hardwood with some plantation pine.

Excellent Deer and Turkey habitat. Seller reports property holds significant gravel deposits. Property has some interior roads and established food plots. Electric is nearby and community water is approx 1 mile away and may be possible to extend to the property.



**LEE MCMINN**

BROKER/OWNER/REALTOR®

OFFICE: 662-473-0535

CELL: 662-816-8204

lee@mcminnrealty.com



**McMINN**

REALTY & LAND COMPANY



## LEE MCMINN

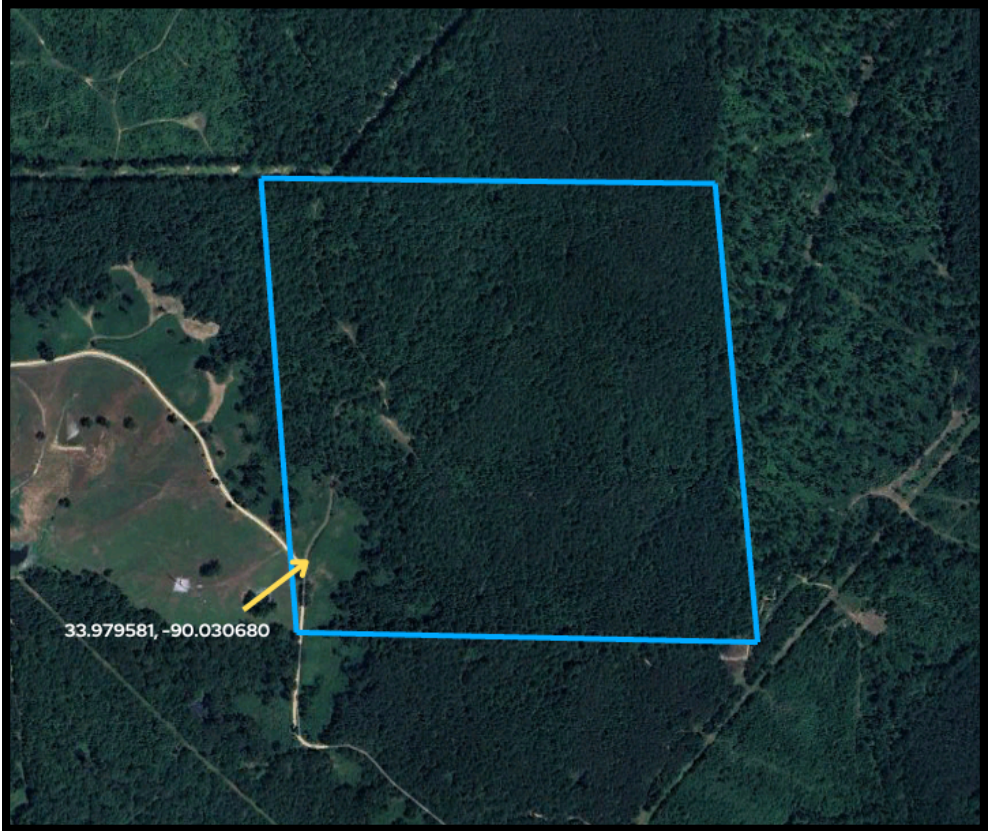
BROKER/OWNER/REALTOR®  
OFFICE: 662-473-0535  
CELL: 662-816-8204  
[lee@mcminnrealty.com](mailto:lee@mcminnrealty.com)



# McMINN

REALTY & LAND COMPANY

# Aerial Map



**LEE MCMINN**

BROKER/OWNER/REALTOR®

OFFICE: 662-473-0535

CELL: 662-816-8204

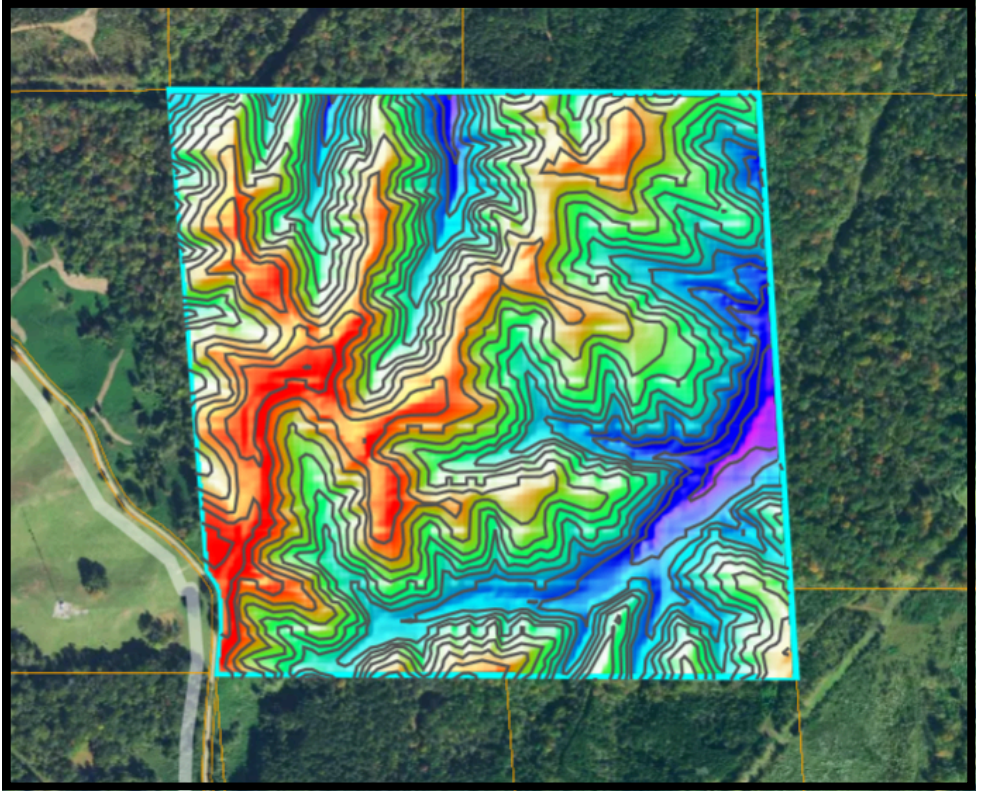
lee@mcminnrealty.com



**McMINN**

REALTY & LAND COMPANY

# Topography Map



**LEE MCMINN**

BROKER/OWNER/REALTOR®

OFFICE: 662-473-0535

CELL: 662-816-8204

lee@mcmminrealty.com



**McMINN**

REALTY & LAND COMPANY

# Directional Map



From the intersection of Hwy 32 and Hwy 35 turn onto Hwy 35. Then turn onto Tallah Rd. Stay on Tallah Rd for 2.9 miles. Then a sharp turn onto Jordan Hill Road and drive for 1.1 miles and property will be on the left.  
**Google Maps Pin: <https://maps.app.goo.gl/uNofzRsad5vb9XhCA>**

**LEE MCMINN**

BROKER/OWNER/REALTOR®

OFFICE: 662-473-0535

CELL: 662-816-8204

[lee@mcmminrealty.com](mailto:lee@mcmminrealty.com)



**McMINN**

REALTY & LAND COMPANY