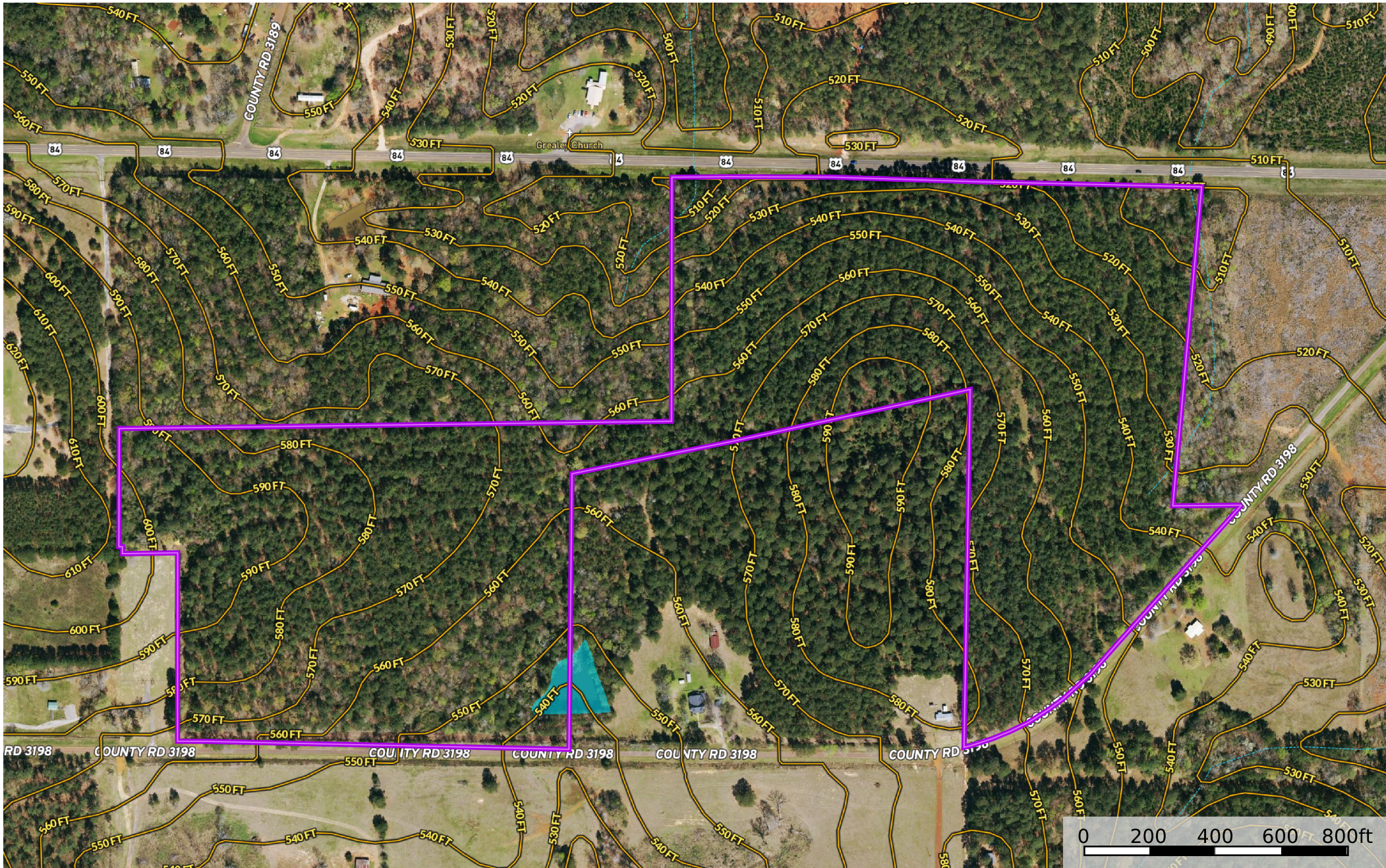


TDB Hwy 84, MtEnterprise, TX
 Rusk County, Texas, 64 AC +/-



-  Boundary
-  Stream, Intermittent
-  River/Creek
-  Water Body
-  Voltage Unavailable
-  Voltage 0 - 99 KV
-  Voltage 100 - 161 KV
-  Voltage 220 - 287 KV
-  Voltage 345 KV
-  Voltage 500 KV
-  Voltage 735 KV+