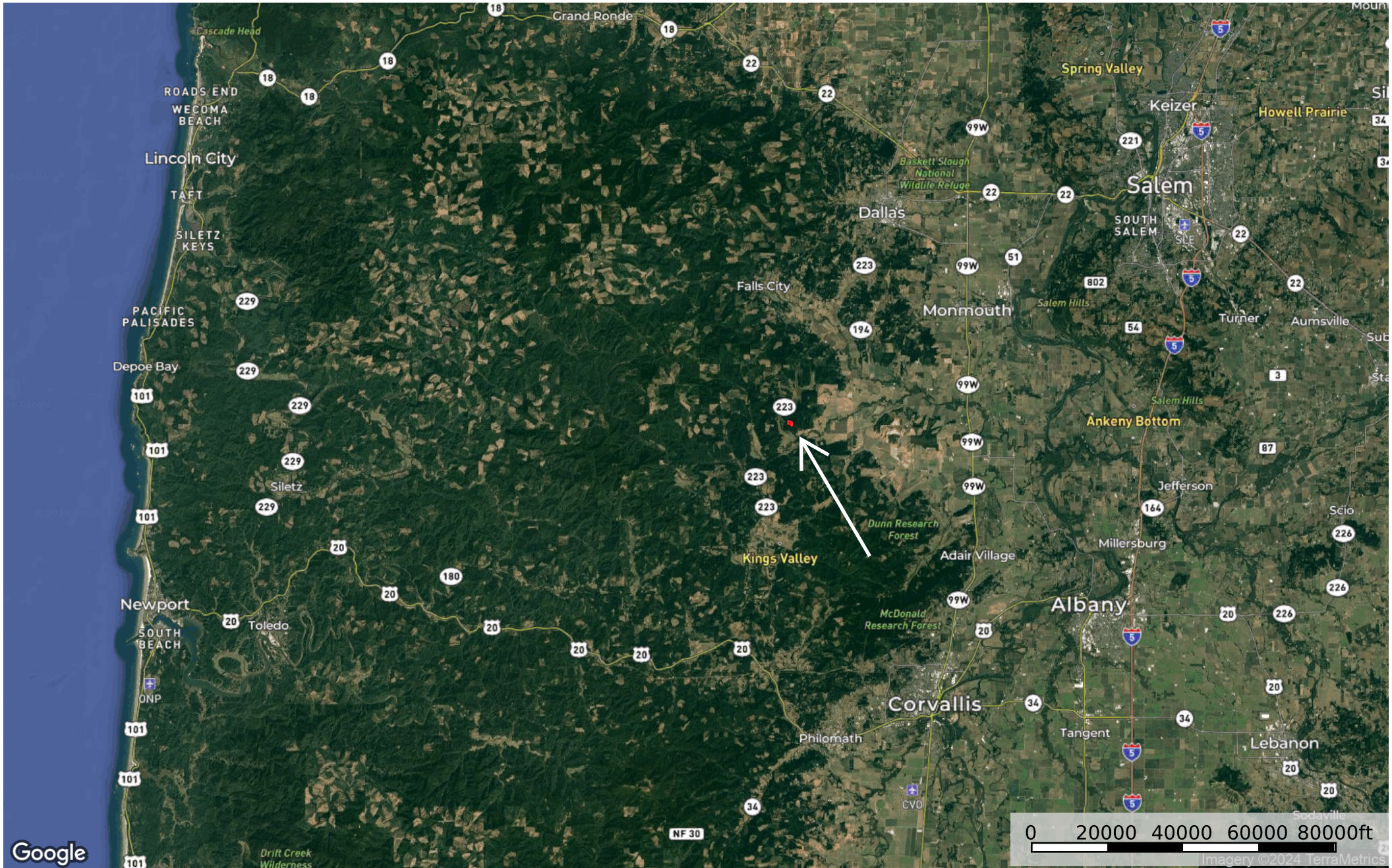

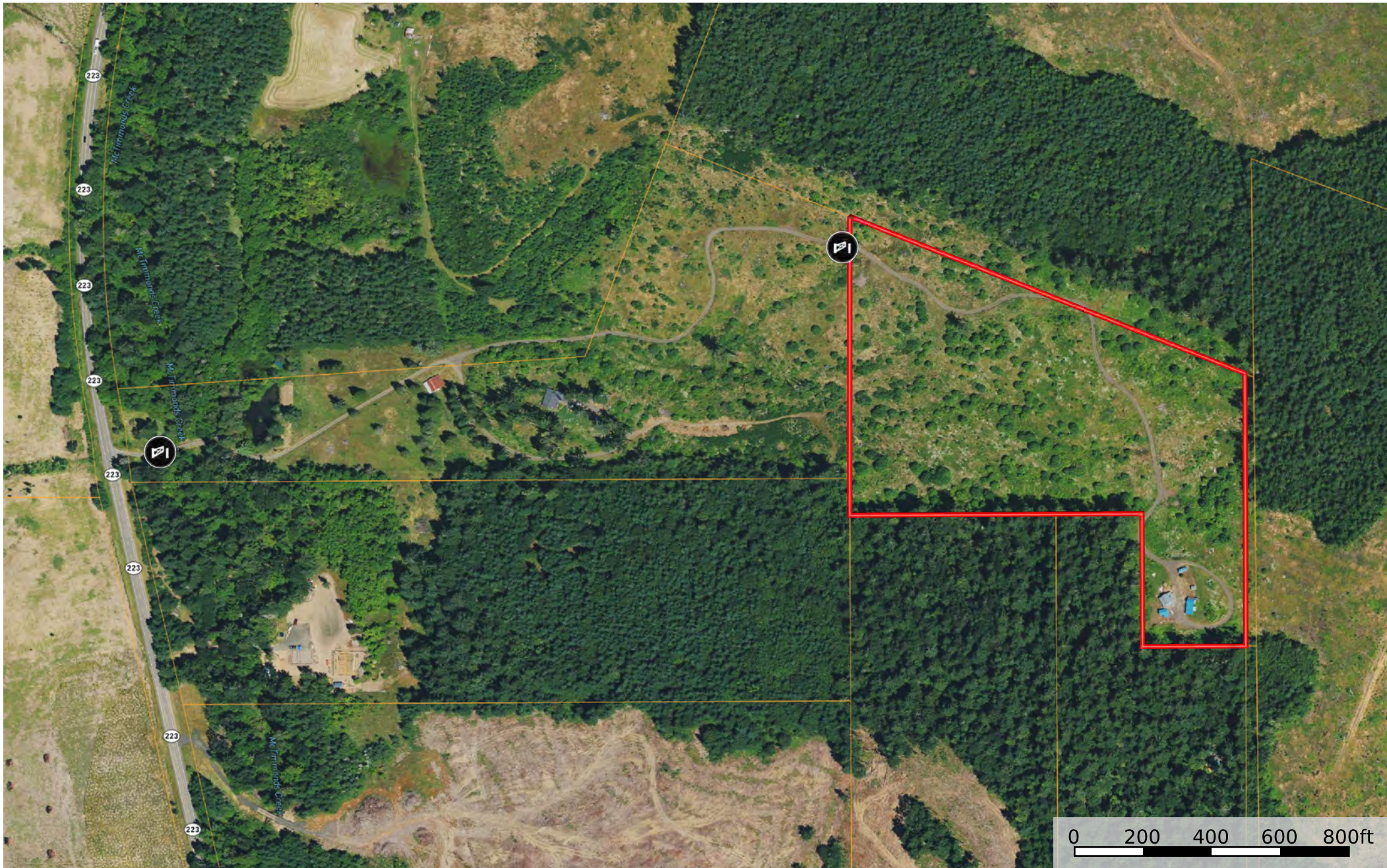


11400 S Kings Valley Hwy.
Monmouth, OR - 21.48 AC +/-



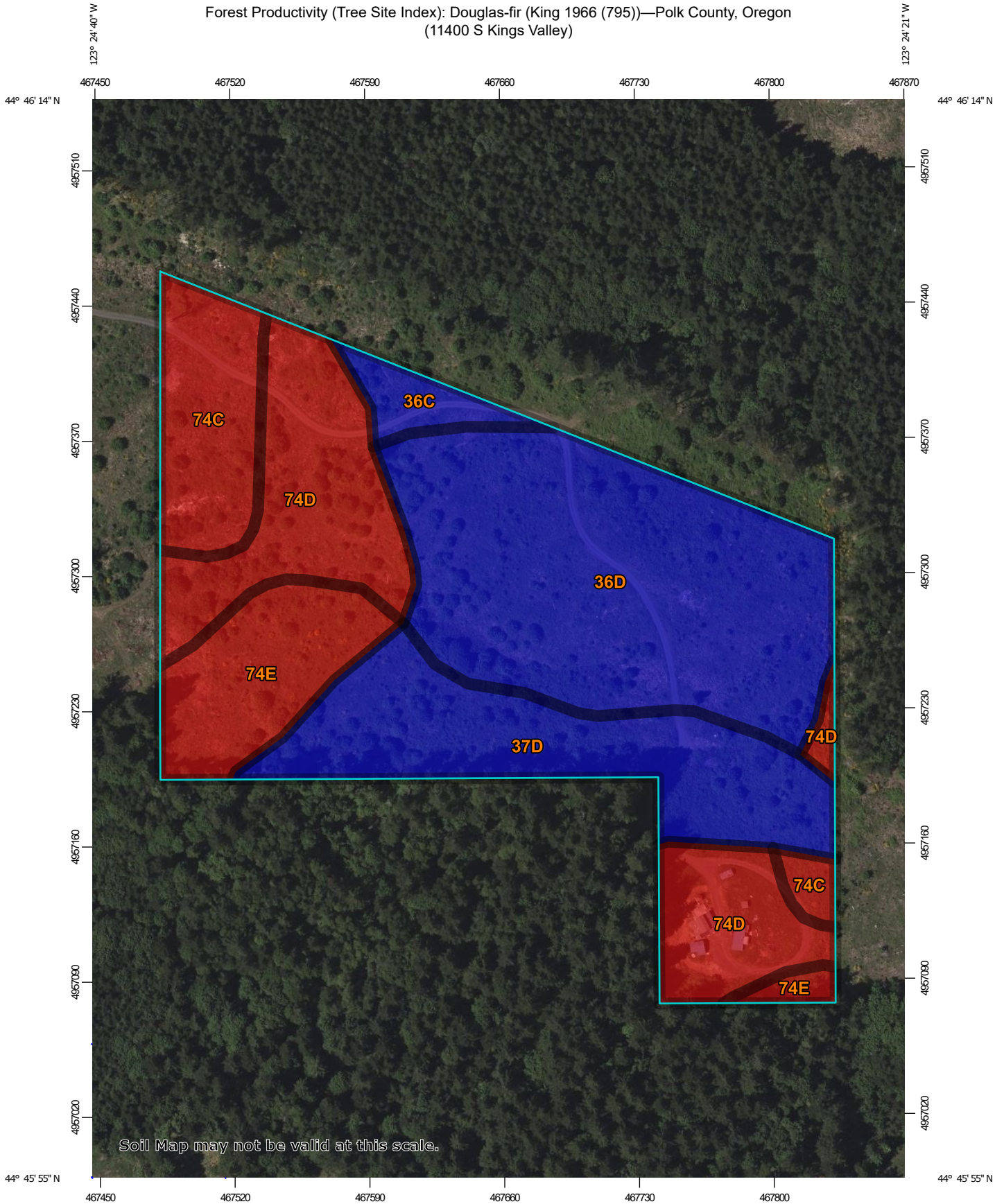
 Boundary

11400 S Kings Valley Hwy.
Monmouth, OR - 21.48 AC +/-

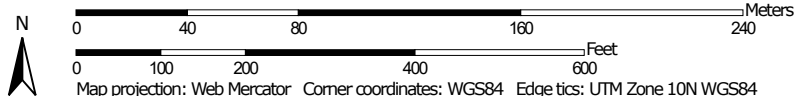


 Gate  Boundary

Forest Productivity (Tree Site Index): Douglas-fir (King 1966 (795))—Polk County, Oregon
(11400 S Kings Valley)



Map Scale: 1:2,720 if printed on A portrait (8.5" x 11") sheet.



Map projection: Web Mercator Corner coordinates: WGS84 Edge tics: UTM Zone 10N WGS84



Forest Productivity (Tree Site Index): Douglas-fir (King 1966 (795))

Map unit symbol	Map unit name	Rating (feet)	Acres in AOI	Percent of AOI
36C	Jory silty clay loam, 2 to 12 percent slopes	122	0.6	2.8%
36D	Jory silty clay loam, 12 to 20 percent slopes	122	7.0	35.8%
37D	Jory silty clay loam, 2 to 30 percent slopes	122	3.7	19.1%
74C	Willakenzie silty clay loam, 2 to 12 percent slopes	110	2.0	10.1%
74D	Willakenzie silty clay loam, 12 to 20 percent slopes	110	4.2	21.4%
74E	Willakenzie silty clay loam, 20 to 30 percent slopes	110	2.1	10.8%
Totals for Area of Interest			19.4	100.0%

Description

The "site index" is the average height, in feet, that dominant and codominant trees of a given species attain in a specified number of years. The site index applies to fully stocked, even-aged, unmanaged stands.

This attribute is actually recorded as three separate values in the database. A low value and a high value indicate the range of this attribute for the soil component. A "representative" value indicates the expected value of this attribute for the component. For this attribute, only the representative value is used.

Rating Options

Units of Measure: feet

Tree: Douglas-fir

Site Index Base: King 1966 (795)

Aggregation Method: Dominant Component

Component Percent Cutoff: None Specified

Tie-break Rule: Higher

Interpret Nulls as Zero: No

Polk County, Oregon

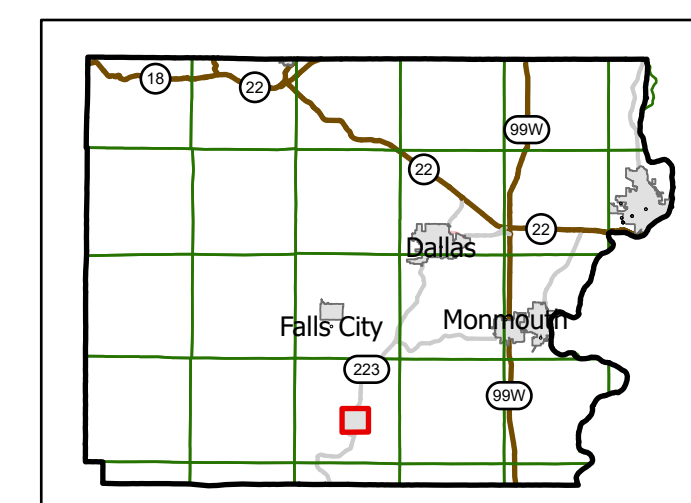
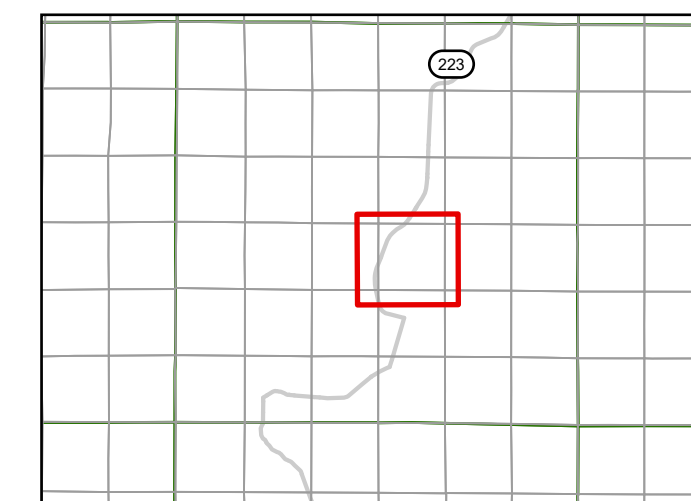
SEC.22 T.9S. R.6W. W.M.

Scale 1"=400'

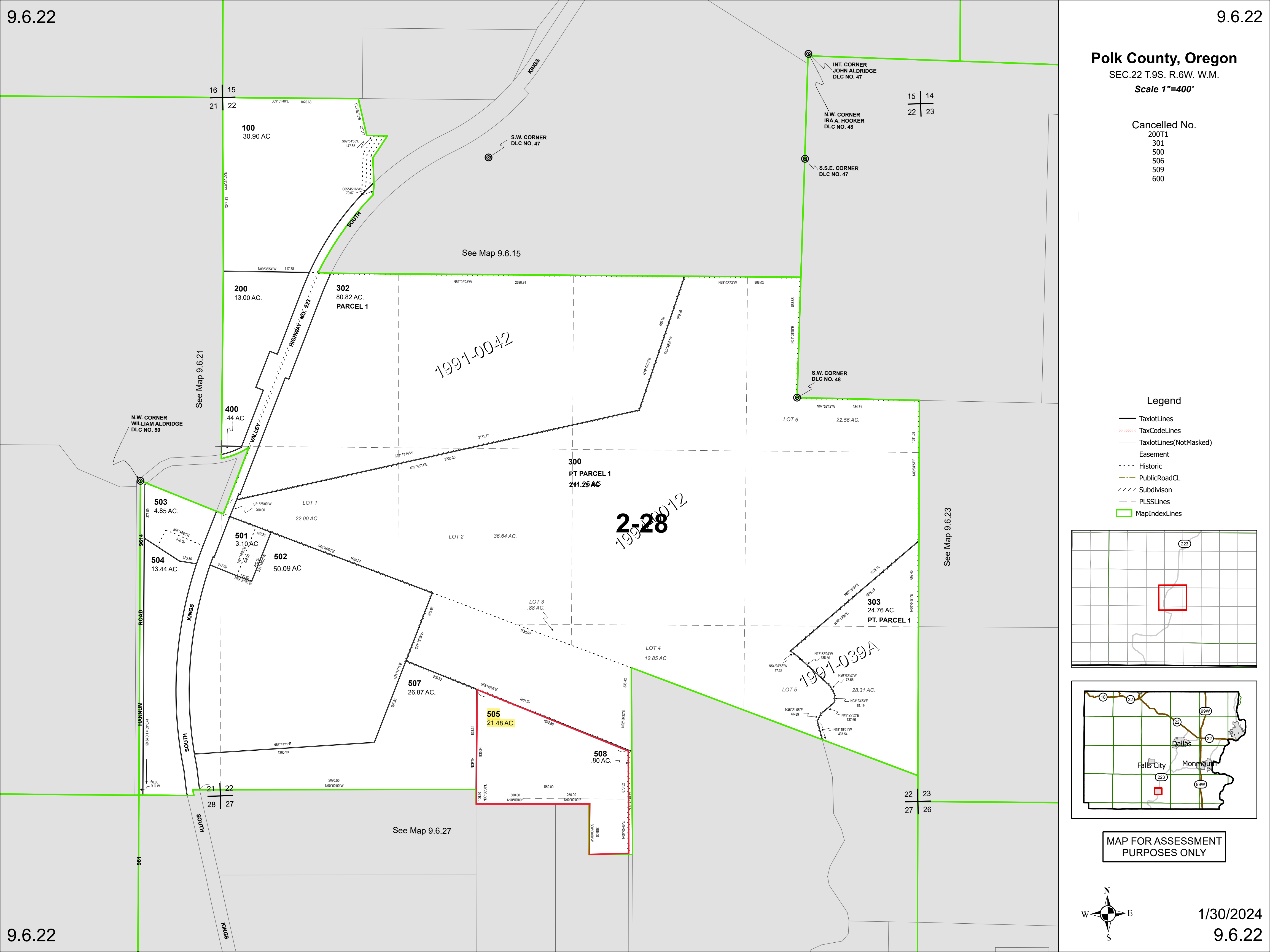
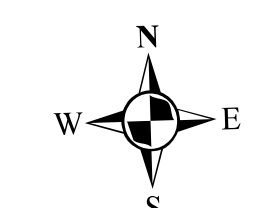
Cancelled No.
 200T1
 301
 500
 506
 509
 600

Legend

- TaxlotLines
- ⋯ TaxCodeLines
- TaxlotLines(NotMasked)
- - - Easement
- ⋯ Historic
- PublicRoadCL
- /// Subdivision
- - - PLSSLines
- ▭ MapIndexLines



MAP FOR ASSESSMENT
 PURPOSES ONLY



16 | 15
 21 | 22

15 | 14
 22 | 23

See Map 9.6.21

See Map 9.6.23

See Map 9.6.27