

CERTIFICATE OF OWNERS

This is to certify that the undersigned are the owners in fee simple of the following described property...

CHINOOK

Located in Lots 2, 3, 4, 9, 11, 8, 13, SW 1/4 NE 1/4 Section 6, T20N, R22E, BM, Lemhi County, Idaho

ACKNOWLEDGEMENT

I, James S. Johnson, 1980, before me, a Notary Public in and for the State of Idaho...

CERTIFICATE OF ENGINEER

This is to certify that I, James S. Johnson, a Registered Professional Engineer in the State of Idaho...

ACKNOWLEDGEMENT

State of Idaho, ss. I, James S. Johnson, 1980, before me, a Notary Public in and for the State of Idaho...

COUNTY PLANNING AND ZONING COMMISSION'S ACCEPTANCE

This plat was accepted and approved by the Planning and Zoning Commission of Lemhi County, Idaho on this 20th day of October, 1979.

COUNTY COMMISSIONERS' ACCEPTANCE

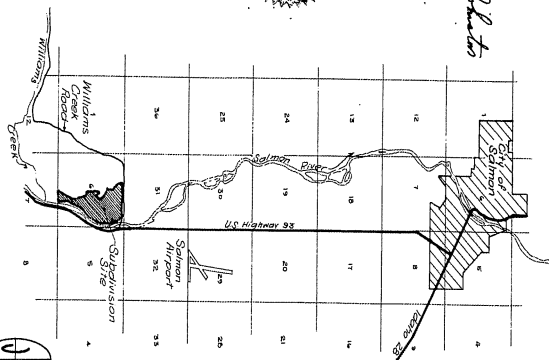
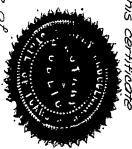
The foregoing plat was duly accepted and approved and transmission of all public records was accepted by the Board of Commissioners of Lemhi County, Idaho on this 20th day of November, 1980.

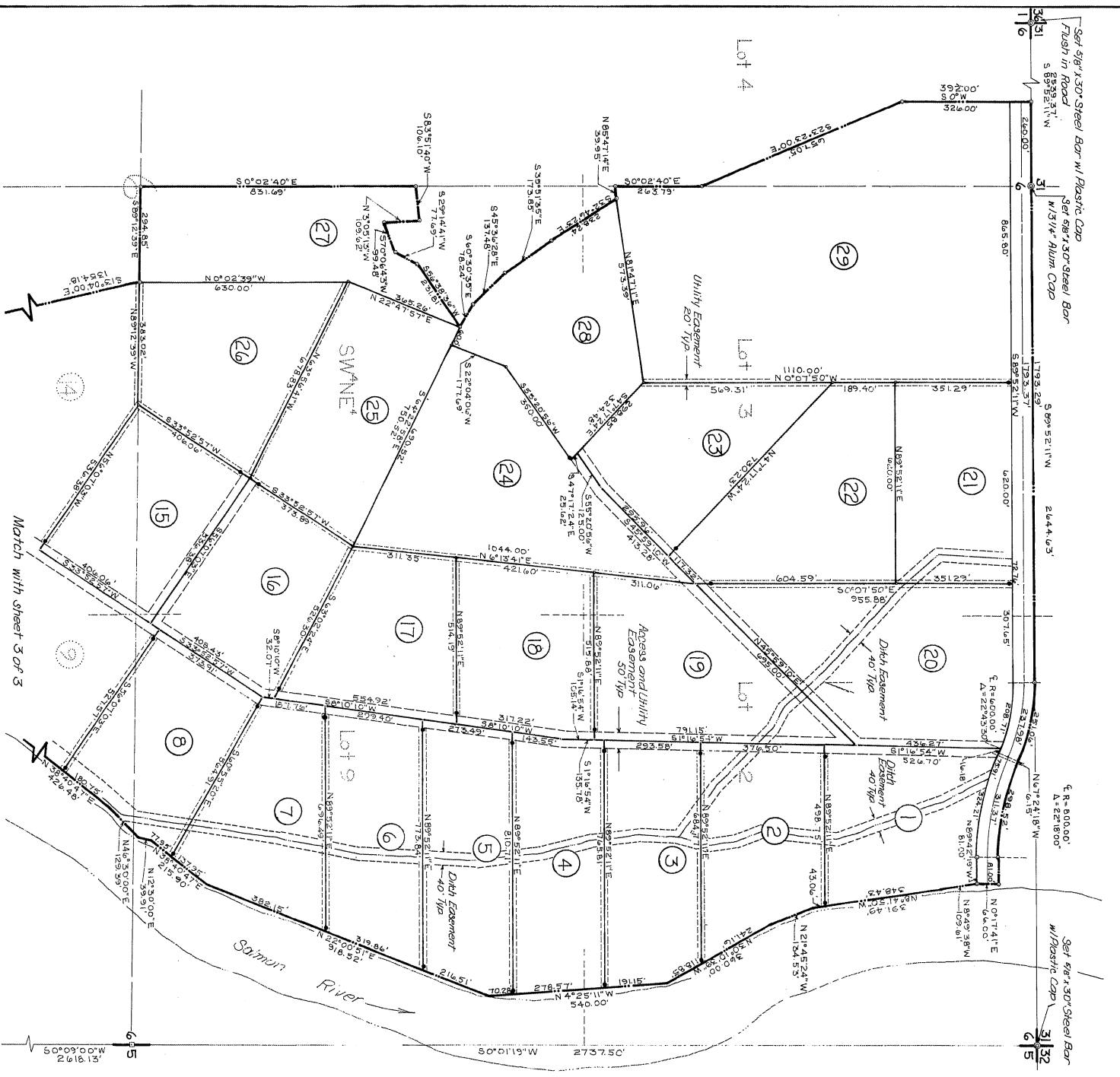
COUNTY RECORDER'S CERTIFICATE

State of Idaho, County of Idaho, This is to certify that the foregoing plat was filed in the Office of the Recorder of Lemhi County, Idaho on this 20th day of April, 1980, and duly recorded in Plot Book 5 of Page 21.

SANITARY RESTRICTIONS

The Sanitary Restrictions of Section 50126 Idaho Code is hereby certified as satisfied subject to the following requirements...

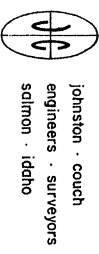
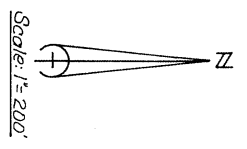




151844
 COUNTY COMMISSIONERS' ACCEPTANCE
 The foregoing plat was duly accepted and approved by the Board of County Commissioners of Lemhi County, Idaho on this 21st day of June 1980.
Flora Ann Davis Dennis
 Chairman
 COUNTY RECORDER'S CERTIFICATE

State of Idaho
 County of Lemhi
 This is to certify that the foregoing plat was filed in the Office of the Recorder of Lemhi County, Idaho on this 24th day of June 1980 at 5:44am and duly recorded in Plat Book 5 of Page 22-1.
Edward Nelson
 County Recorder

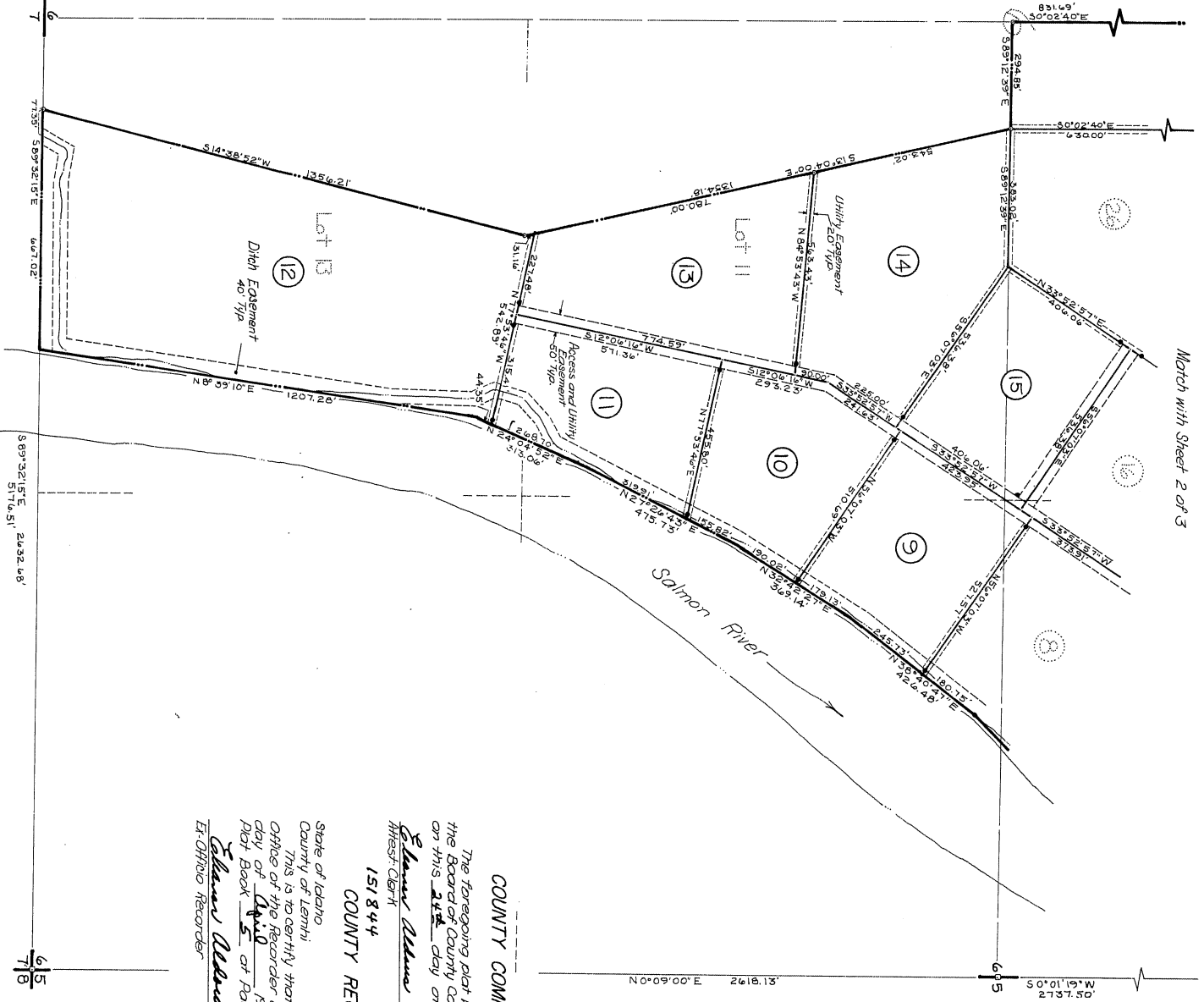
- LEGEND**
- Government Corner, Stone Found
 - 1/2" x 24" Steel Bar w/Plastic Cap set as Boundary Corner
 - 1/2" x 24" Steel Bar w/Plastic Cap to be set as Lot Corner
 - 1/2" x 24" Steel Bar w/Plastic Cap to be set as Point on Line
 - Boundary Line
 - Lot Line
 - ⑤ Lot Number



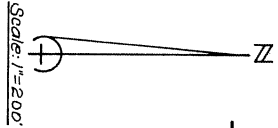
Johnston · Couch
 engineers · surveyors
 salmon · Idaho

Match with sheet 3 of 3

Match with Sheet 2 of 3



N 5° 12' 2\"/>



- LEGEND**
- Government Corner, Stone Round
 - 1/2 x 2 1/2 Steel Bar w/Plastic Cap set as Boundary Corner
 - 1/2 x 2 1/2 Steel Bar w/Plastic Cap to be set as lot Corner
 - 1/2 x 2 1/2 Steel Bar w/Plastic Cap to be set as Point on Line
 - Boundary Line
 - Lot Line
 - ⑩ Lot Number

COUNTY COMMISSIONERS' ACCEPTANCE

The foregoing plat was duly accepted and approved by the Board of County Commissioners of Lemhi County, Idaho on this 24th day of March, 1980.

Glenn Allen
 Sheriff, Clerk
Lois Lemish
 Chairman

COUNTY RECORDER'S CERTIFICATE

State of Idaho
 County of Lemhi
 This is to certify that the foregoing plat was filed in the Office of the Recorder of Lemhi County, Idaho on this 24th day of April, 1980 of Book 5 of Page 25.
Glenn Allen
 Co. Office Recorder



Johnston · Co. Inc.
 engineers · surveyors
 salmon · Idaho

615
 718