



KENILWORTH 35

KENILWORTH BOULEVARD
SEBRING, FL 33870

Daniel Lanier
863.698.2971
daniel.lanier@svn.com

Property Overview



Sale Price **\$549,000**

OFFERING SUMMARY

Acreage: **35.18 Acres**
Price / Acre: \$15,605
City: Sebring
County: Highlands
Property Type: Farms & Nurseries
Properties, Land Other

PROPERTY OVERVIEW

This property is 35.18 acres located on Kenilworth Boulevard, just minutes from downtown Sebring. Located on the property is a diesel power unit on a 10" well along with an abandoned 10' electric well. These wells along with the Astatula Sand soils, would be conducive to grow most any crops. With the 1,129 feet of road frontage, this would make an excellent homesite conveniently located near all that Sebring has to offer.

Specifications & Features



SPECIFICATIONS & FEATURES

Land Types:

- Farms & Nurseries Properties
- Land Other

Uplands / Wetlands:

100% Uplands

Soil Types:

Astatula Sand

Road Frontage:

1,129 feet of frontage on Kenilworth Boulevard

Location



LOCATION & DRIVING DIRECTIONS

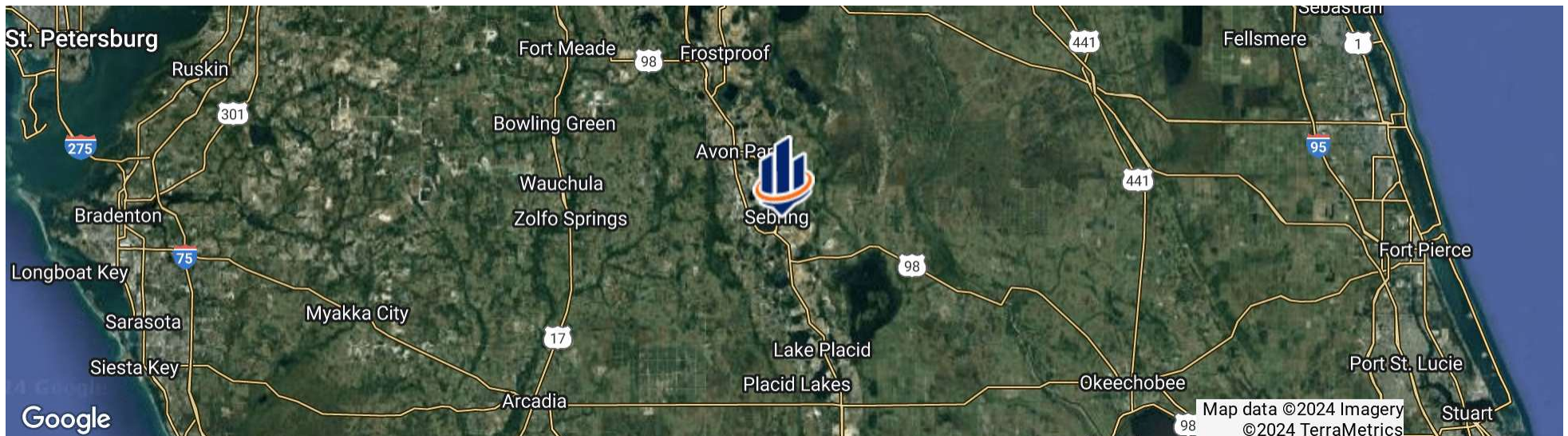
Parcel: C-02-35-29-A00-0040-0000

GPS: 27.4858009, -81.4278988

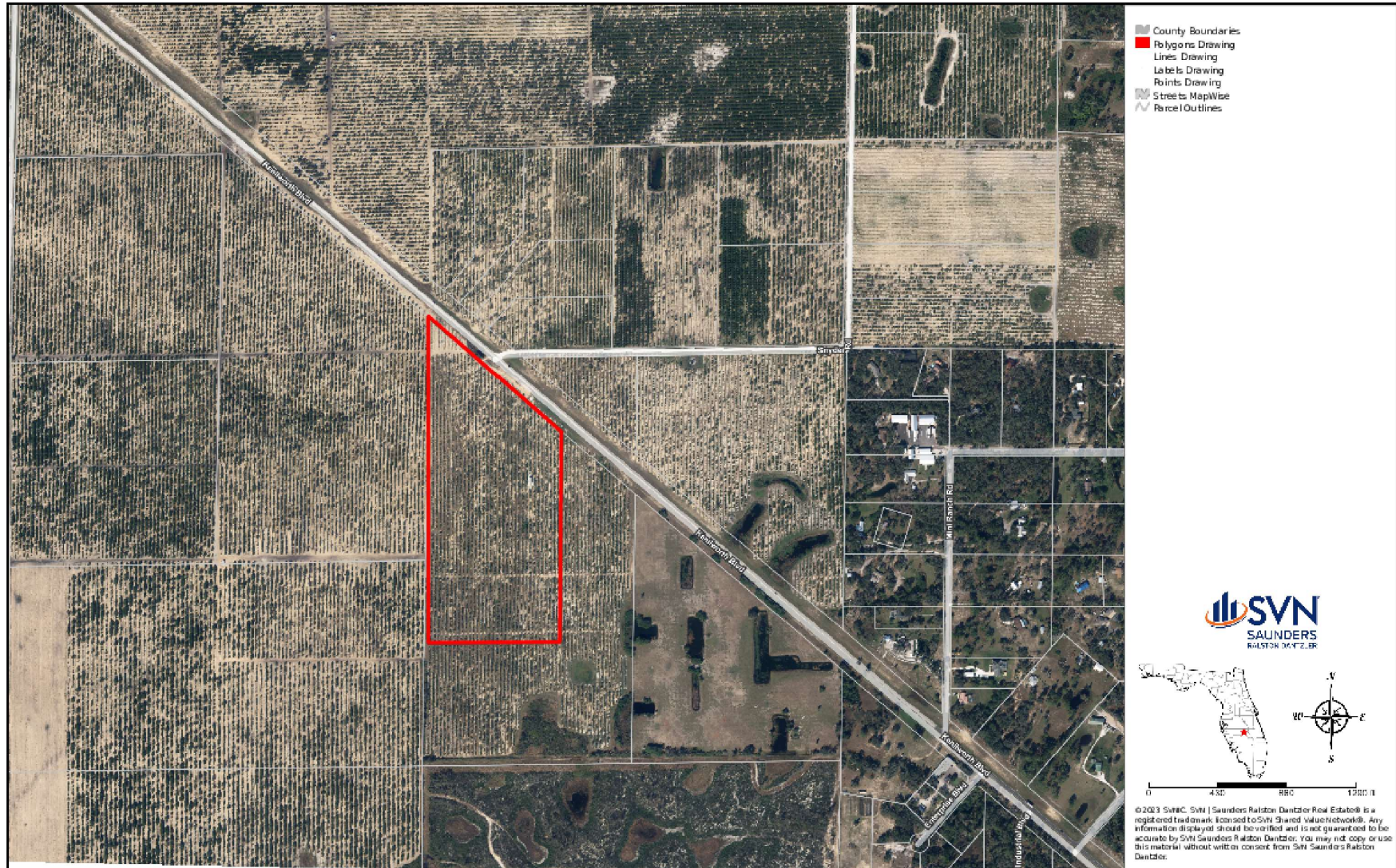
Driving Directions:

- From Downtown Sebring, travel 3.1 miles southeast on Kenilworth Boulevard
- The property is on the South side of the road.

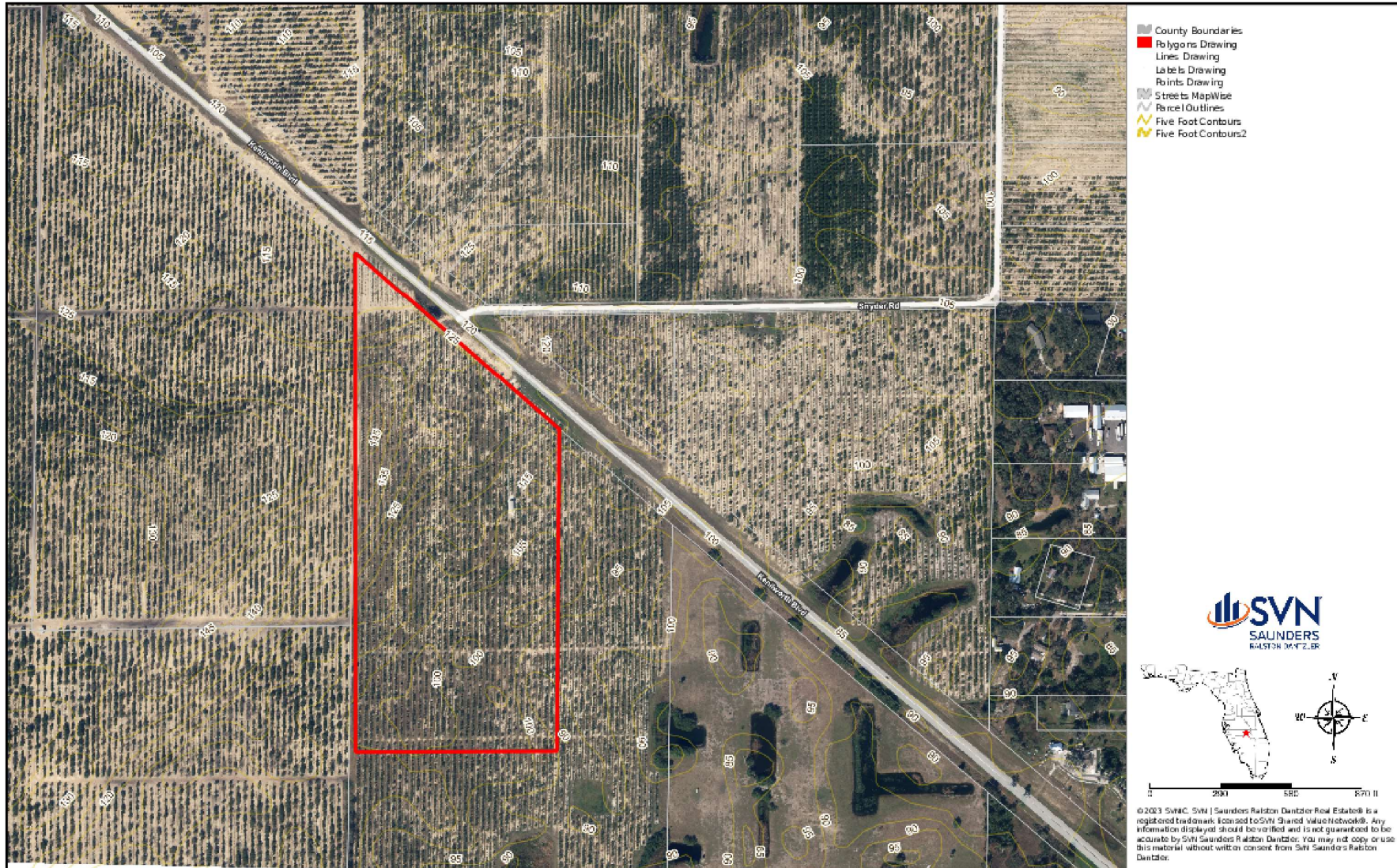
Showing Instructions: Call Daniel Lanier



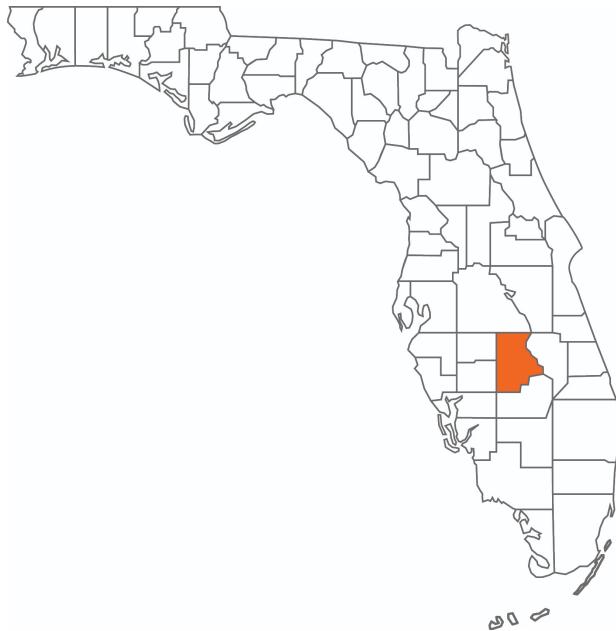
Boundary Map



Soil Map







HIGHLANDS COUNTY

FLORIDA

Founded	1921	Density	103.3 [2019]
County Seat	Sebring	Population	103,502 [2023]
Area	1,028 sq mi	Website	highlandsfl.gov

Highlands County comprises the Sebring-Avon Park Metropolitan Statistical Area, and its county seat is the city of Sebring. Equidistant to Tampa, Orlando, and South Florida, Highlands County is located within two hours of more than 86% of Florida's population. This location positions the county as a great bedroom community for workers who commute throughout the state. Highlands County is also near three interstates connecting to several commercial airports, an intermodal logistics center, and various deepwater ports. The county is about 1.5 hours from Orlando, Tampa, Fort Myers, and West Palm Beach.

According to DataUSA, the local county economy employs 34,300 people as of 2020. The largest industries are Health Care & Social Assistance [6,071 people], Retail Trade [5,595 people], and Construction [3,356 people]. The highest-paying industries are Information [\$82,176], Wholesale Trade [\$53,542], and Public Administration [41,111].



ONE OF AMERICA'S BEST BROKERAGES



One of America's
Best Brokerages



APEX 2022 Top
National Producer



Most Influential
Business Leaders



Largest Commercial
Real Estate Brokers
in Tampa Bay



Ranked 210 on Inc.
5000 Regional List



For more information visit www.SVNsaunders.com

HEADQUARTERS

1723 Bartow Rd
Lakeland, FL 33801
863.648.1528

ORLANDO

605 E Robinson Street, Suite 410
Orlando, Florida 32801
386.438.5896

NORTH FLORIDA

356 NW Lake City Avenue
Lake City, Florida 32055
352.364.0070

GEORGIA

203 E Monroe Street
Thomasville, Georgia 31792
229.299.8600

ARKANSAS

112 W Center St, Suite 501
Fayetteville, Arkansas 72701
479.582.4113

©2024 Saunders Ralston Dantzler Real Estate. All SVN® Offices Independently Owned and Operated SVN | Saunders Ralston Dantzler Real Estate is a full-service land and commercial real estate brokerage representing buyers, sellers, investors, institutions, and landowners since 1996. We are recognized nationally as an authority on all types of land, including agriculture, ranch, recreation, and residential development. Our commercial real estate services include property management, leasing and tenant representation, valuation, business brokerage, and advisory and counseling services for office, retail, industrial, and multifamily properties. Our firm also features an auction company, a forestry division, international partnerships, and extensive expertise in conservation easements. Located in Florida, Georgia, and Alabama, we provide proven leadership and collaborative expertise backed by the strength of the SVN® global platform.

