

FIELD NOTES OF 74.40 ACRES OUT OF UNIT 41-B, UNIT 68, UNIT 69 AND OXBOW LAKE, WICHITA VALLEY FARM AS RECORDED IN VOLUME 3, PAGES 148-151, WICHITA COUNTY PLAT RECORDS, AND MORE PARTICULARLY DESCRIBED BY METES AND BOUNDS AS FOLLOWS:

BEGINNING at a point in the West bank of the Wichita River, in the East line of said Unit 41-B and at the Southeast corner of a tract of land conveyed to S & P Kelley Lp by deed recorded in Volume 4025, Page 479, Official Public Records of Wichita County, for the most Easterly Northeast corner of this tract;

THENCE with the West bank of the Wichita River and the East line of said Unit 41-B, Unit 68 and Unit 69 as follows: S 00° 41' 41" W a distance of 324.38 feet to a point for an angle corner of this tract; S 02° 40' 52" W a distance of 374.40 feet to a point for an angle corner of this tract; and S 13° 20' 52" W, at 439.27 feet pass an iron rod set on the bank for reference, and continuing on the same distance a total distance of 526.57 feet to a point at the intersection of the West bank of the Wichita River and the centerline of Buffalo Creek, at the Southeast corner of said Unit 69, for the Southeast corner of this tract;

THENCE with the centerline of Buffalo Creek and the South line of said Unit 69 as follows: S 80° 14' 44" W a distance of 316.85 feet to a point for an angle corner of this tract; S 83° 55' 08" W a distance of 280.28 feet to a point for an angle corner of this tract; N 84° 22' 59" W a distance of 331.04 feet to a point for an angle corner of this tract; N 73° 19' 14" W a distance of 248.75 feet to a point for an angle corner of this tract; and N 79° 20' 28" W a distance of 94.00 feet to a point at the Southeast corner of a tract of land conveyed to Jerry C. and Leslie L. Beasley by deed recorded in Volume 2523, Page 337, Official Public Records of Wichita County, for the Southwest corner of this tract;

THENCE N 14° 47' 58" W, with the East line of said Beasley tract, at 110.5 feet pass an iron rod set for reference, at 215.5 feet pass an iron rod found at the most Easterly Northeast corner of said Beasley tract and the Southeast corner of a tract of land conveyed to Wanda K. Dansby by deed recorded in document number 30711-E, Official Public Records of Wichita County, and continuing on the same course with the East line of said Dansby tract a total distance of 1132.80 feet to an iron rod found at an angle corner of said Dansby tract, for an angle corner of this tract;

THENCE continuing with the East line of said Dansby tract as follows: N 14° 45' 05" W a distance of 231.04 feet to an iron rod found at the beginning of a curve to the left having a radius of 594.93, for an angle corner of this tract; Northwesterly with said curve to the left an arc distance of 194.16 feet (Chord = N 23° 58' 59" W - 193.30 feet) to an iron rod found at the end of said curve to the left and the beginning of a second curve to the left having a radius of 100.00 feet, for an angle corner of this tract; and Northwesterly with

said curve to the left an arc distance of 75.32 feet (Chord = N 55° 21' 08" W - 73.55 feet) to an iron rod found at the end of said curve to the left and at the Southeast corner of 45.0 foot road easement know as Peterson Road South, for an angle corner of this tract;

THENCE N 25° 15' 14" W, with the East line of said 45.0 foot road easement, a distance of 87.08 feet to an iron rod found at the Northeast corner of said 45.0 foot road easement and the South corner of a tract of land conveyed to Jackie D. and Wanda Bailey by deed recorded in Volume 2050, Page 368, Official Public Records Wichita County, for an angle corner of this tract;

THENCE with the East line of said Bailey tract as follows: N 19° 04' 05" E a distance of 172.97 feet to an iron rod found at an angle corner of said Bailey tract, for an angle corner of this tract; N 24° 45' 51" W a distance of 243.40 feet to an iron rod found for an angle corner of said Bailey tract, for an angle corner of this tract; and N 19° 16' 31" W a distance of 323.32 feet to an iron rod found at the Northeast corner of said Bailey tract and the Southeast corner of a second tract of land conveyed to Jackie D. and Wanda Bailey by deed recorded in Volume 3624, Page 480, Official Public Records Wichita County, for an angle corner of this tract;

THENCE with the East line of said second Bailey tract as follows: N 19° 58' 24" W a distance of 417.89 feet to an iron rod found for an angle corner of said second Bailey tract, for an angle corner of this tract; N 25° 07' 02" W a distance of 259.46 feet to an iron rod found for an angle corner of said second Bailey tract, for an angle corner of this tract; N 21° 38' 33" W a distance of 353.86 feet to an iron rod found for an angle corner of said second Bailey tract, for an angle corner of this tract; N 10° 36' 03" W a distance of 86.47 feet to an iron rod found for an angle corner of said second Bailey tract, for an angle corner of this tract; and N 36° 14' 37" W a distance of 117.49 feet to an iron rod found at the Northeast corner of said second Bailey tract, in the fenced North line of said Unit 69, the fenced South line of Unit 67, said Wichita Valley Farm and the fenced South line of a tract of land conveyed to Alton Walker by deed recorded in Volume 1947, Page 573, Official Public Records of Wichita County, for the Northwest corner of this tract;

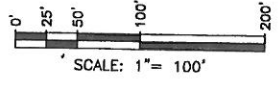
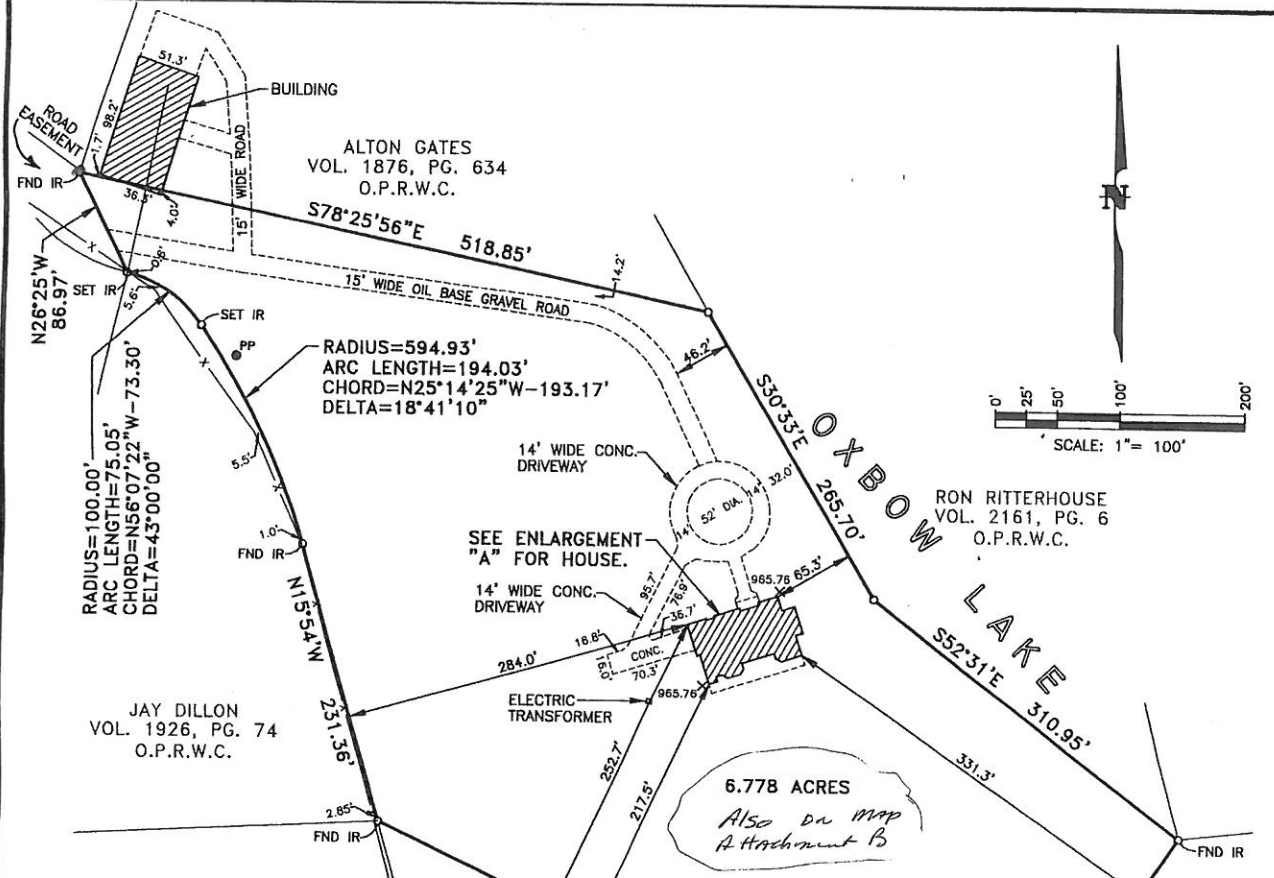
THENCE with the fenced South line of said Walker tract as follows: S 89° 47' 51" E a distance of 124.55 feet to an iron rod set at an angle corner of said Walker tract, for an angle corner of this tract; N 77° 05' 10" E a distance of 97.84 feet to an iron rod found at a 4" wooden fence corner at an angle corner of said Walker tract, for an angle corner of this tract; and S 85° 15' 38" E a distance of 381.88 feet to an iron rod found in the fenced West line of said S & P Kelly, LP tract, for the most Northerly Northeast corner of this tract;

THENCE with the fenced West line of said S & P Kelly, LP tract as follows: S 22° 44' 40" E a distance of 339.99 feet to an iron rod set for an angle corner of said S & P Kelly, LP tract, for an angle corner of this tract; S 26° 51' 22" E a distance of 305.15 feet to a 4" wooden fence corner for an angle corner of said

S & P Kelly, LP tract, for an angle corner of this tract; S 14° 11' 58" E a distance of 274.09 feet to an iron rod found at an angle corner of said S & P Kelly, LP tract, for an angle corner of this tract; S 20° 48' 31" E a distance of 342.45 feet to an iron rod found at an angle corner of said S & P Kelly, LP tract, for an angle corner of this tract; S 37° 16' 41" E a distance of 102.94 feet to an iron rod found at an angle corner of said S & P Kelly, LP tract, for an angle corner of this tract; S 32° 31' 04" E a distance of 370.46 feet to an iron rod found at an angle corner of said S & P Kelly, LP tract, for an angle corner of this tract; and S 12° 51' 30" E a distance of 809.81 feet to an iron rod found at the Southwest corner of said S & P Kelly, Lp tract, for an ell corner of this tract;

THENCE with the fenced South line of said S & P Kelly, LP as follows: N 84° 37' 39" E a distance of 288.37 feet to an iron rod set for an angle corner of said S & P Kelly, Lp tract, for an angle corner of this tract; N 84° 45' 15" E a distance of 644.47 feet to an iron rod set for an angle corner of said S & P Kelly, LP tract, for an angle corner of this tract; and N 84° 29' 24" E, at 75.7 pass an iron rod set for reference, and continuing on the same course a total distance of 110.70 feet to the PLACE of BEGINNING and containing 74.40 acres of land.

NOTE: THE COMPANY IS PROHIBITED FROM INSURING THE AREA OR QUANTITY OF THE LAND DESCRIBED HEREIN. ANY STATEMENT IN THE ABOVE LEGAL DESCRIPTION OF THE AREA OR QUANTITY OF LAND IS NOT A REPRESENTATION THAT SUCH AREA OR QUANTITY IS CORRECT, BUT IS MADE ONLY FOR INFORMATIONAL PURPOSES AND DOES NOT OVERRIDE ITEM 2 OF SCHEDULE B HEREOF.



The herein described property does lie within the Special Flood Hazard Areas inundated by 100 Year Flood as delineated on the Flood Insurance Rate Map for Wichita County, Texas.

Panel Number: 481189 0160 B,

Dated: MARCH 2, 1983,

as published by the U.S. Department of Housing and Urban Development, Federal Emergency Management Agency. The 100 Year Flood elevation is 954 above MSL. The lowest finish floor elevation of the house on this property is 966.50 above MSL.

Flood Zone designation is Zone A6.

Finish Floor Elevation 966.50.

6.778 ACRES  
Also on map  
Attachment B

**WICHITA VALLEY FARM UNIT 68**

ALTON GATES  
VOL. 1876, PG. 645  
O.P.R.W.C.

**FIELD NOTES**

FIELD NOTES OF 6,778 ACRES OF LAND OUT OF WICHITA VALLEY FARM UNIT 68, WICHITA COUNTY, TEXAS, DESCRIBED BY METES AND BOUNDS AS FOLLOWS:

- BEGINNING at an iron rod found at an ell corner of Unit 68, said point being the Southwest corner of Unit 41-B, and the South corner of Unit 41-C, Wichita Valley Farms according to plat recorded in Volume 3, Pages 148-151, Wichita County Plat Records;
- THENCE S 34' 50" W-275.02 feet to an iron rod for the South corner of this tract;
- THENCE N 34' 15" W-540.04 feet to an iron rod found the Northeast corner of a 10.0 acre tract conveyed to Jay Dillon by deed recorded at Volume 2099, Page 450, Official Public Records of Wichita County;
- THENCE with the East line of said 3.77 acres as follows: N 15' 54" W-231.36 feet to an iron rod found the beginning of a curve to the left having a radius of 594.93 feet and a chord bearing N 25' 14' 25" W-193.17 feet; THENCE with said curve to the left an arc distance of 194.03 feet to the beginning of a curve to the left having a radius of 100.0 feet and a chord bearing N 56' 07' 22" W-73.3 feet; THENCE with said curve to the left an arc distance of 75.05 feet to an iron rod set in the West line of said Unit 68, the Northeast corner of said 3.77 acre tract;
- THENCE N 26' 25" W with the West line of said Unit 68, a distance of 86.97 feet to an iron rod found the Southwest corner of a 23.185 acre tract, for the Northwest corner of this tract;
- THENCE S 78' 25' 56" E with the South line of said 23.185 acre tract a distance of 518.85 feet to a point in the West line of a 5.519 acre tract;
- THENCE with West line of said 5.519 acre tract as follows: S 30' 33" E-265.7 feet and S 52' 31" E-310.95 feet to the PLACE OF BEGINNING.

BASIS OF BEARING IS THE WEST LINE OF ALTON GATES PROPERTY RECORDED VOL. 1876, PG. 645, O.P.R.W.C. = N 15' 55' 25" W

I do hereby certify that the plat hereon accurately represents the results of an on-the-ground survey made under my direction and supervision of the property located at 3399 PETERSON ROAD SOUTH, and described as follows: (SEE FIELD NOTES)

I further certify that the dimensions, size and location of buildings and improvements are as shown; that there are no encroachments, conflicts or protrusions except as shown. All corners are as shown.

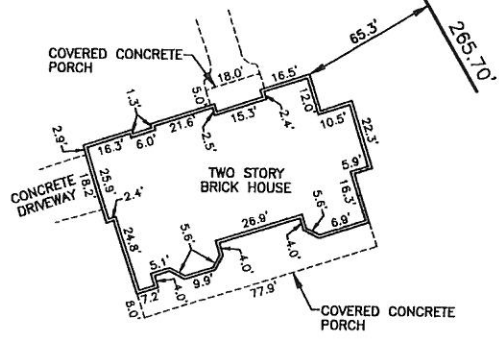
This the 8<sup>th</sup> day of JUNE, 2000.

CORLETT, PROBST & BOYD, INC.  
Engineers and Surveyors  
Wichita Falls, Texas

*A. E. Probst, Jr.*  
A. E. PROBST, JR.  
REGISTERED PROFESSIONAL LAND SURVEYOR NO. 612

**ENLARGEMENT "A"**

SCALE: 1" = 40'



C:\VCF\HDD\14681\14891\CLD.DWG - JUN 08, 2000 4:17 PM

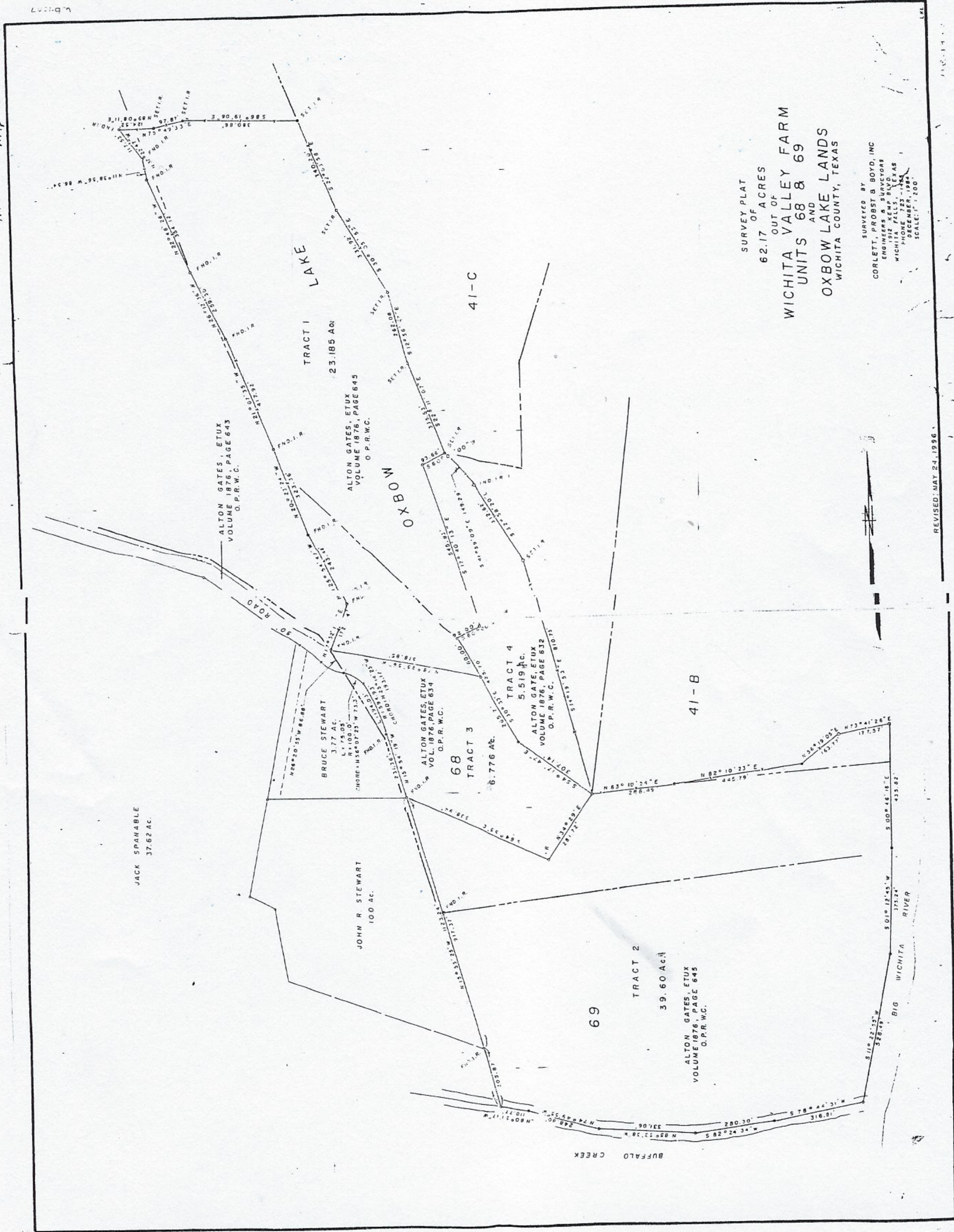
WB-3543



ATF 5120.25

Supplement Page 5  
Attachment Map B

Attachment Map B



SURVEY PLAT  
OF  
62.17 ACRES  
OUT OF  
WICHITA VALLEY FARM  
UNITS 68 & 69  
AND  
OXBOW LAKE LANDS  
WICHITA COUNTY, TEXAS

SURVEYED BY  
CORLETT, PROBST & BOYD, INC.  
ENGINEERS & SURVEYORS  
1912 KEMP BLVD.  
WICHITA FALLS, TEXAS  
PHONE NUMBER, 1984  
SCALE: 1" = 200'

REVISED: MAY 24, 1996