

# TESNUS RANCH

---

Experience Texas in a way only few have.



Exclusivly Listed By:



COMPASS



LIFESTYLE  
RANCH & HOME  
GROUP



# Location

---

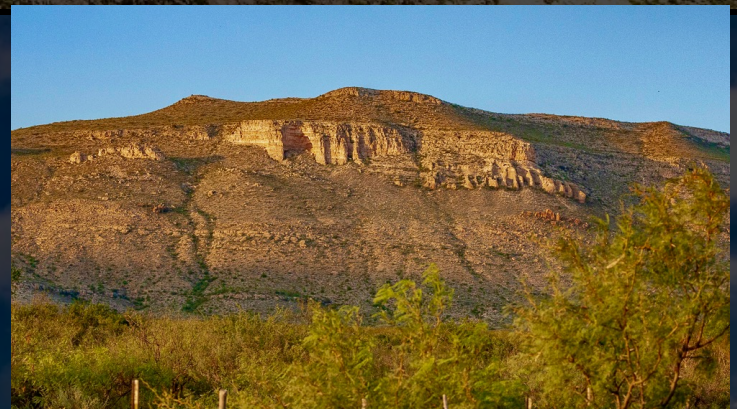


Tesnus Ranch spans approximately 19,814 acres and is situated just 30 minutes from the Gage Hotel, east of Marathon on Highway 90. From there, head south for 12 miles on a private, well-maintained deeded easement road to reach the ranch's front gate. This expansive and secluded area is flanked by the imposing House Top Mountains to the north and east, and Shely Peaks Mesa to the south, offering views over the San Francisco Creek valley into Mexico. The landscape is characterized by a series of wooded canyons, mountains, valleys, and draws.

## About

---

Tesnus is a secluded wildlife and hunting ranch framed by towering mountains across diverse desert habitats. A well-maintained all-weather road leads to the ranch, where a modern 3-bedroom, 2-bath home with covered porches and large windows provides stunning mountain views. The house is surrounded by older outbuildings, barns, and pipe pens with scales. Beyond the Headquarters, roads access the mountains and valleys of the ranch.



Housetop Mountain to the north dominates the landscape, with Fin del Mundo Canyon nearby. Castle Mountain to the south adds to the vistas as the main road heads toward Alamo and Maxon Creeks. The well-built roads to the high country offer stunning views, with limestone valleys and diverse flora. Wildlife includes elk, deer, and aoudad. From the top, you can see Maderas del Carmens, the Chisos Mountains of Big Bend National Park and Sierra Del Carmens in Mexico. Elevations range up to 4,850 feet.



# Wildlife Habitat

Habitats on Tesnus are diverse, ranging from lower to mid-elevation desert grasslands and scrubs, wooded canyons, to pine-oak highlands. The area features a variety of Chihuahuan Desert grasses, forbs, shrubs, cacti, and trees. The vegetation includes dagger, yucca, lechuguilla, creosote, catclaw, javalina bush, mariola, sotol, ocotillo, and cholla, along with chino grama, black grama, red grama, bear grass, and sideoats grama. Brush and trees in higher elevations and draws include pinon pine, juniper, hackberry, mesquite, persimmon, madrone, sumac, mountain laurel, and oaks. In spring, the landscape blooms with a variety of cacti, yucca, daggers, and native forbs.

This property hosts numerous bird species, including raptors, songbirds, and game birds like blue (scaled) quail, mourning dove, and white-winged dove. Larger mammals such as desert mule deer, elk, javalina, aoudad, mountain lion, and the occasional black bear also inhabit the area. The brush, forbs, and grasses provide excellent habitats for both game and non-game animals. Wooded canyons are perfect for birdwatching, especially during spring and fall migrations when a myriad of neotropical songbirds can be observed.





# Improvements & Resources

The ranch functions as a wildlife and hunting ranch featuring a well-equipped headquarters 5 bedroom home and outbuildings next to high-quality central pipe shipping pens. With an extensive water system these wells are both submersible and windmill-and solar operated—connected to a vast water distribution system that supplies water to both the lowlands and high mountains. This system reliably can serve wildlife, livestock, and the headquarters. The region enjoys an excellent and plentiful water supply, complemented by several earthen tanks that store water during wet seasons. Water in the region is excellent and abundant. There are several earthen tanks that provide water during wet periods of the year. Electricity is abundant and runs all the way down the railroad tracts that supply to a series of submersible pumps and boosters that pumps the water up into the mountains and into many of the reservoirs and troughs. There is an infrastructure of roads that provide access to most all of the ranch.





# Tesnus Ranch

---





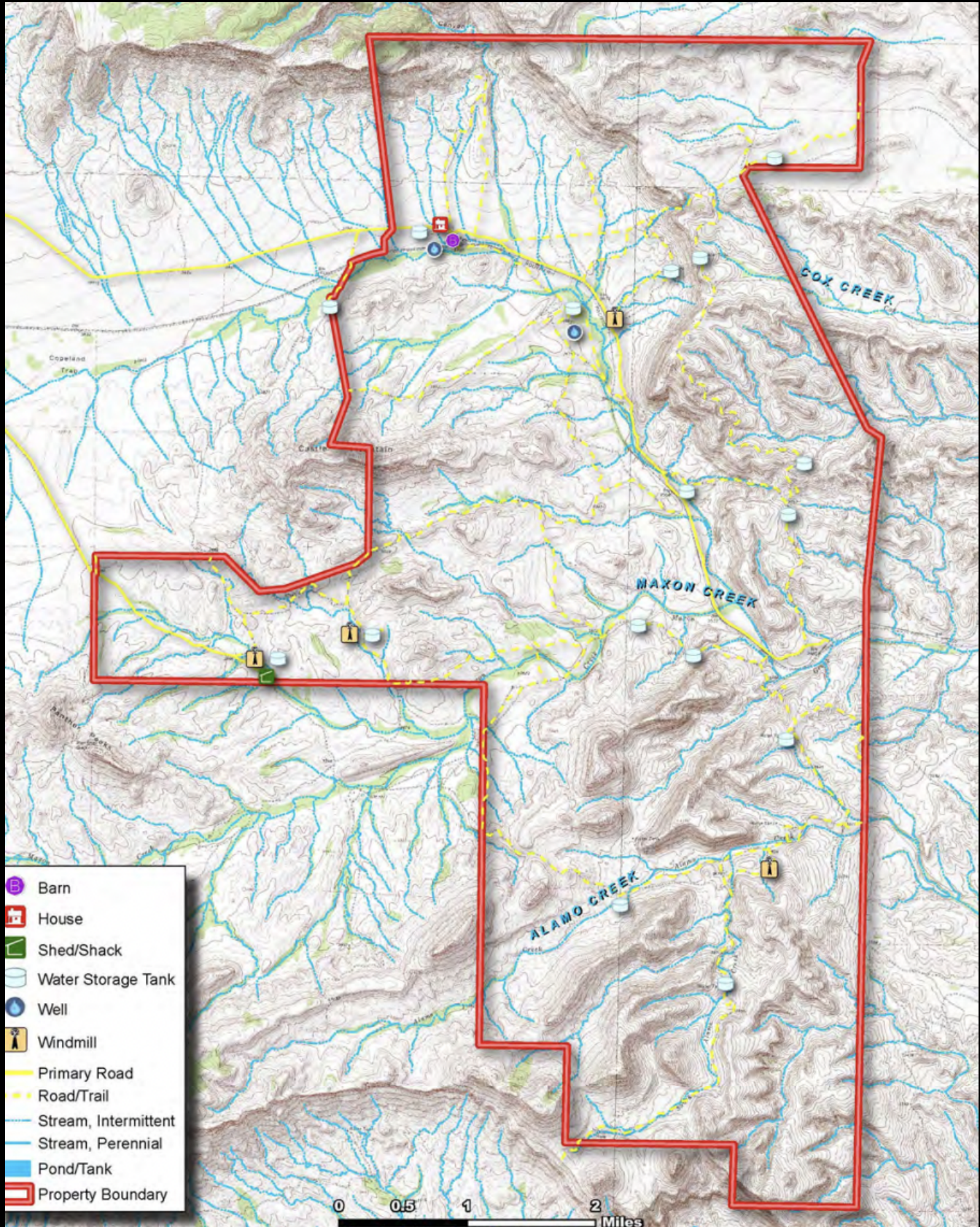
# TERRAIN

---





# AERIAL/TOPO





# Your Legacy Awaits

---



## Contact Us

---



**Brian Stephen**

**Listing Agent**  
**REALTOR®**  
**M: 979.485.8999**  
**bstephen@ppabv.com**



**Tonya Currie**

**Listing Agent**  
**REALTOR®**  
**M: 281.507.4808**  
**tonya.currie@compass.com**



**Rick Doak**

**Listing Agent**  
**REALTOR®**  
**M: 979.551.0025**  
**rick.doak@compass.com**



**Brinson Stephen**

**Marketing Director**  
**REALTOR®**  
**M: 979.229.8548**  
**brinsonstephen7@gmail.com**