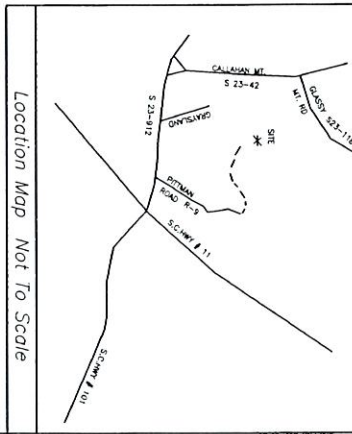
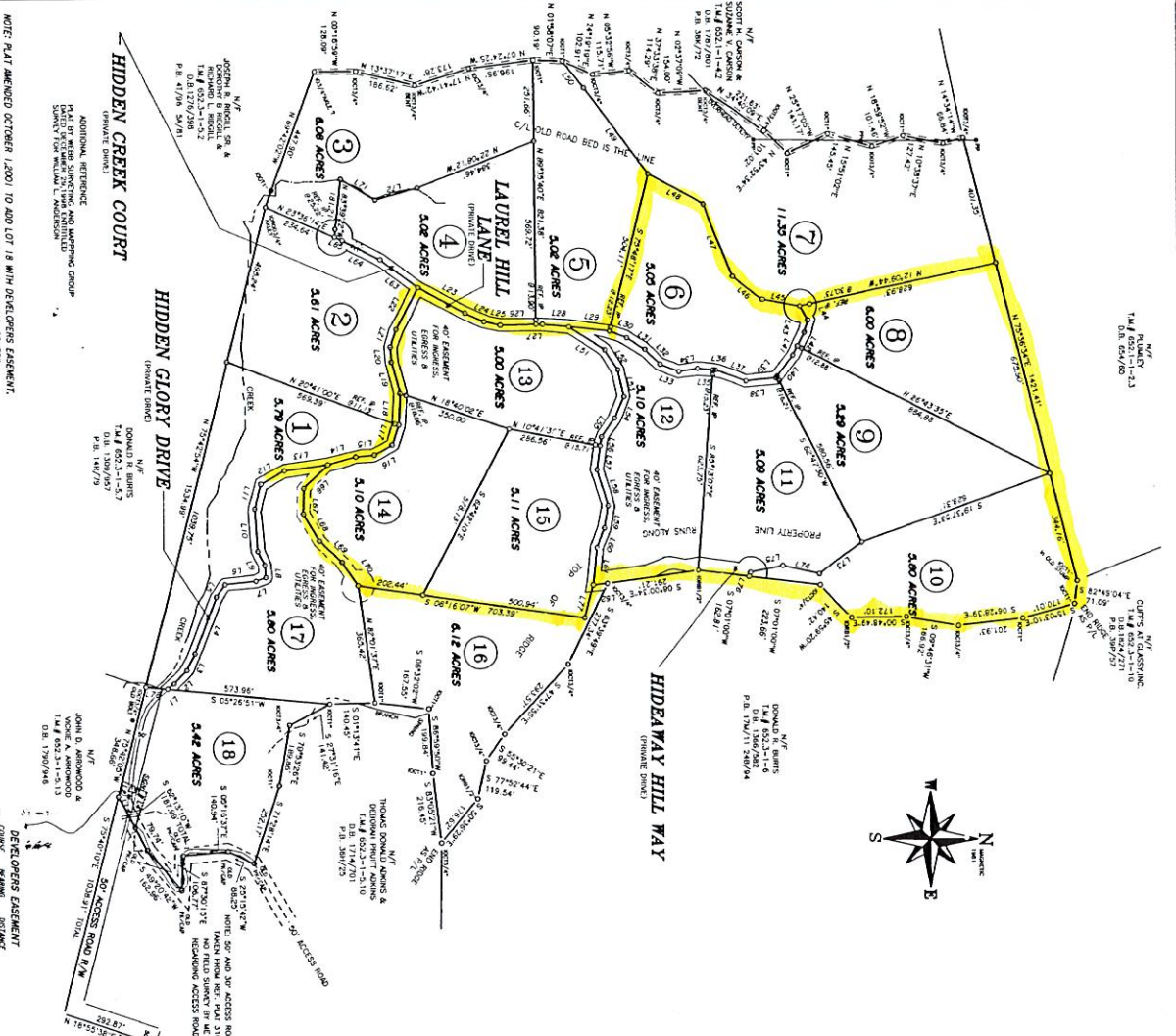


COURSE	BEARING	DISTANCE
L1	N 34°12'16"E	66.66'
L2	N 64°05'05"E	152.78'
L3	N 55°28'31"E	47.24'
L4	N 19°29'43"E	32.24'
L5	S 62°46'25"E	46.14'
L6	S 62°46'25"E	46.14'
L7	S 62°46'25"E	46.14'
L8	S 62°46'25"E	46.14'
L9	S 62°46'25"E	46.14'
L10	S 62°46'25"E	46.14'
L11	S 62°46'25"E	46.14'
L12	S 62°46'25"E	46.14'
L13	S 62°46'25"E	46.14'
L14	S 62°46'25"E	46.14'
L15	S 62°46'25"E	46.14'
L16	S 62°46'25"E	46.14'
L17	S 62°46'25"E	46.14'
L18	S 62°46'25"E	46.14'
L19	S 62°46'25"E	46.14'
L20	S 62°46'25"E	46.14'
L21	S 62°46'25"E	46.14'
L22	S 62°46'25"E	46.14'
L23	S 62°46'25"E	46.14'
L24	S 62°46'25"E	46.14'
L25	S 62°46'25"E	46.14'
L26	S 62°46'25"E	46.14'
L27	S 62°46'25"E	46.14'
L28	S 62°46'25"E	46.14'
L29	S 62°46'25"E	46.14'
L30	S 62°46'25"E	46.14'
L31	S 62°46'25"E	46.14'
L32	S 62°46'25"E	46.14'
L33	S 62°46'25"E	46.14'
L34	S 62°46'25"E	46.14'
L35	S 62°46'25"E	46.14'
L36	S 62°46'25"E	46.14'
L37	S 62°46'25"E	46.14'
L38	S 62°46'25"E	46.14'
L39	S 62°46'25"E	46.14'
L40	S 62°46'25"E	46.14'
L41	S 62°46'25"E	46.14'
L42	S 62°46'25"E	46.14'
L43	S 62°46'25"E	46.14'
L44	S 62°46'25"E	46.14'
L45	S 62°46'25"E	46.14'
L46	S 62°46'25"E	46.14'
L47	S 62°46'25"E	46.14'
L48	S 62°46'25"E	46.14'
L49	S 62°46'25"E	46.14'
L50	S 62°46'25"E	46.14'
L51	S 62°46'25"E	46.14'
L52	S 62°46'25"E	46.14'
L53	S 62°46'25"E	46.14'
L54	S 62°46'25"E	46.14'
L55	S 62°46'25"E	46.14'
L56	S 62°46'25"E	46.14'
L57	S 62°46'25"E	46.14'
L58	S 62°46'25"E	46.14'
L59	S 62°46'25"E	46.14'
L60	S 62°46'25"E	46.14'
L61	S 62°46'25"E	46.14'
L62	S 62°46'25"E	46.14'
L63	S 62°46'25"E	46.14'
L64	S 62°46'25"E	46.14'
L65	S 62°46'25"E	46.14'
L66	S 62°46'25"E	46.14'
L67	S 62°46'25"E	46.14'
L68	S 62°46'25"E	46.14'
L69	S 62°46'25"E	46.14'
L70	S 62°46'25"E	46.14'
L71	S 62°46'25"E	46.14'
L72	S 62°46'25"E	46.14'
L73	S 62°46'25"E	46.14'
L74	S 62°46'25"E	46.14'
L75	S 62°46'25"E	46.14'
L76	S 62°46'25"E	46.14'
L77	S 62°46'25"E	46.14'
L78	S 62°46'25"E	46.14'



Location Map Not To Scale



NOTE: PLAN AMENDED OCTOBER 1, 2009 TO ADD LOT 18 WITH 6.09 ACRES EASEMENT.
NOTE: THIS TRACT OF LAND CONSISTS OF 103.24 ACRES -- AND SUBDIVIDED AT THE REQUEST OF WILLIAM A. ANDERSSON.
NOTE: ALL CORNERS MARKED WITH NEW 1/2" REBAR UNLESS OTHERWISE NOTED.
NOTE: 40 FOOT EGRESS, EGRESS AND UTILITY EASEMENT IS A PERPETUAL, NON-EXCLUSIVE EASEMENT.
NOTE: ALL C&U -S&C'S SHOWN HAVE A 50' RADIUS.

ARTISLE PLANNING COMMISSION JURISDICTION
 This subdivision is not within the limits of the Greenville County Planning Commission jurisdiction, and therefore, approval of this subdivision is the responsibility of the Greenville County Planning Commission. For more information, please contact the Greenville County Planning Commission at (864) 621-1100.

CERTIFICATE OF ATTORNEY FOR RECORDING
 I, the undersigned, a duly qualified and admitted attorney at law in the State of South Carolina, do hereby certify that the foregoing is a true and correct copy of the original as recorded in my office, and that the same has been duly recorded in the public records of the County of Greenville, South Carolina, in Book 10323, Page 57.

DEVELOPER'S EASEMENT
 I, the undersigned, do hereby certify that the foregoing is a true and correct copy of the original as recorded in my office, and that the same has been duly recorded in the public records of the County of Greenville, South Carolina, in Book 10323, Page 57.

GOHELL PROFESSIONAL, INC.
 State of South Carolina
 County of Greenville
 SUBDIVISION SURVEY FOR
 WILLIAM A. ANDERSSON
HIDDEN HILLS OF GLASSY MOUNTAIN

Each property owner is provided access to a public road by a private easement. The easement is shown on the plan and is subject to the terms and conditions set forth in the easement agreement. The easement is a perpetual, non-exclusive easement. The easement is subject to the terms and conditions set forth in the easement agreement.

GOHELL PROFESSIONAL, INC.
 1000 S. GREENVILLE AVENUE
 GREENVILLE, SOUTH CAROLINA 29605
 PHONE: (864) 621-1100
 FAX: (864) 621-1101
 WWW.GOHELLPROF.COM

